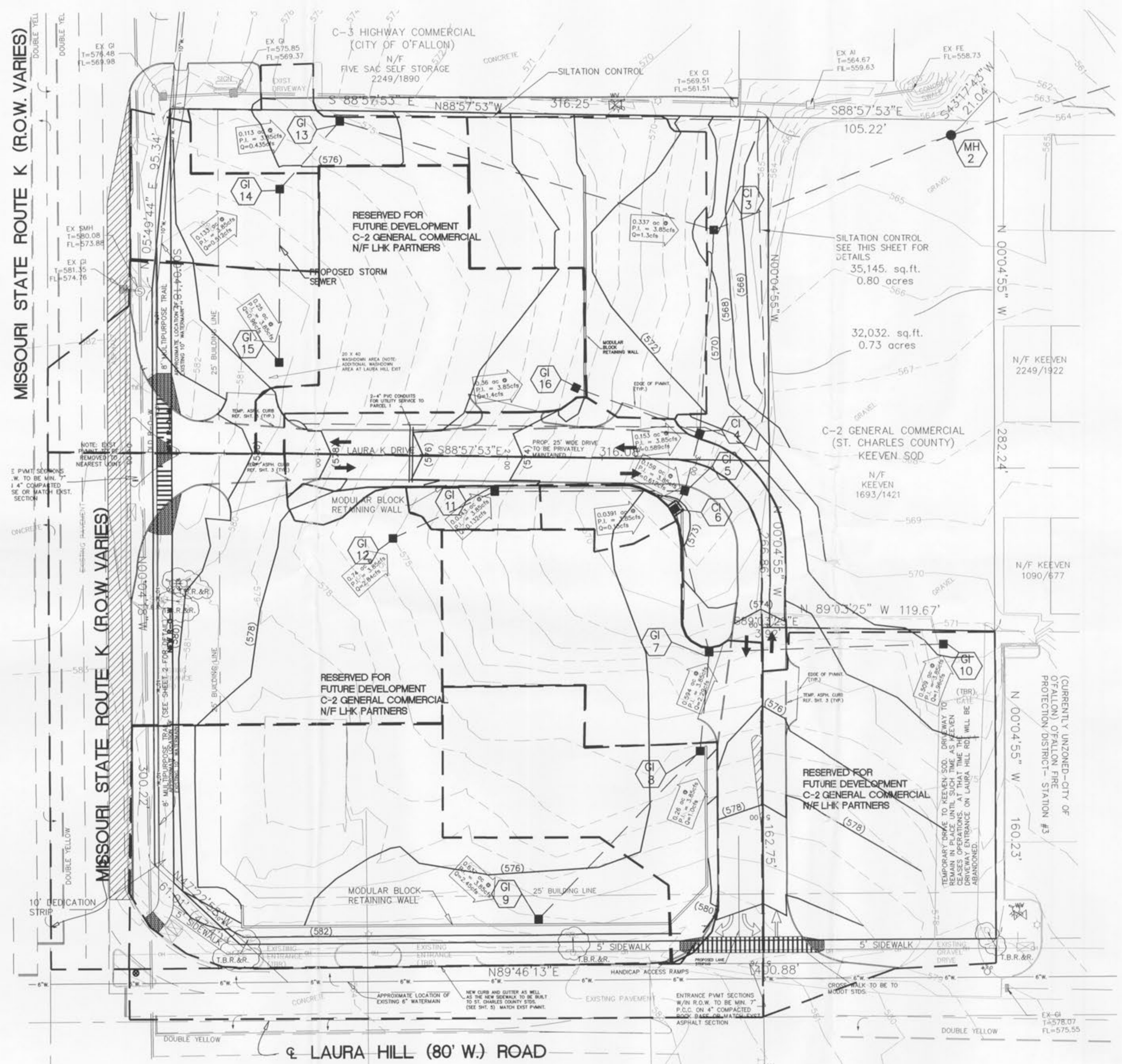


**NOTE:**  
 THIS PLAN TO BE USED FOR  
 DRAINAGE AREA PURPOSES  
 ONLY. SEE IMPROVEMENT  
 PLANS FOR ALL GRADING,  
 SPOT ELEVATIONS, DETAILS,  
 SEWERS, ETC.



CONTRACTOR TO NOTIFY MoDOT TRAFFIC DIVISION TO LOCATE ANY EXISTING SIGNAL AND LIGHTING UNDERGROUND CABLES OR WIRES PRIOR TO THE COMMENCEMENT OF CONSTRUCTION OF EARTHWORK. (314) 340-4100.

Missouri One Call System, Inc.  
 Call Before You Dig!  
 1-800-DIG-RITE  
 (1-800-344-7483)

All the improvements & facilities shown above ground and underground shown herein were plotted from available information and do not necessarily reflect the actual existence, construction, location, size, type, number or location of these or other improvements, facilities, or utilities. The General Contractor shall be responsible for verifying the actual location & elevation of all improvements, facilities, & utilities shown or not shown, and all improvements, facilities, & utilities shall be located in the field prior to any grading, excavation or construction of any improvements. These provisions shall in no way absolve any party from complying with the Underground Facility Safety & Damage Prevention Act, Chapter 318, RSMo. CALL MISSOURI ONE-CALL 1-800-DIG-RITE

**ENGINEER'S CERTIFICATION:**  
 The following applies to ALL sheets and documents involved in the preparation of the plans and documents for this project. The responsibility for Professional Engineering liability on this project is limited to the set of plans displaying the signature and an original stamped seal of the Engineer on each sheet. ALL responsibility is Disclaimed: until ALL review agency approvals are granted; for all other plan sheets issued prior to this plan set date; for this set when another set is issued after this date; if the sheets are used individually instead of a set. This applies for ALL sheets and documents involved in this project whether this statement appears on them or not. Copyright. All Rights Reserved.

ZAVRADINOS PROFESSIONAL ENGINEERS, INC.



O'FALLON P&Z # 3903.01  
**-DRAINAGE AREA MAP-**