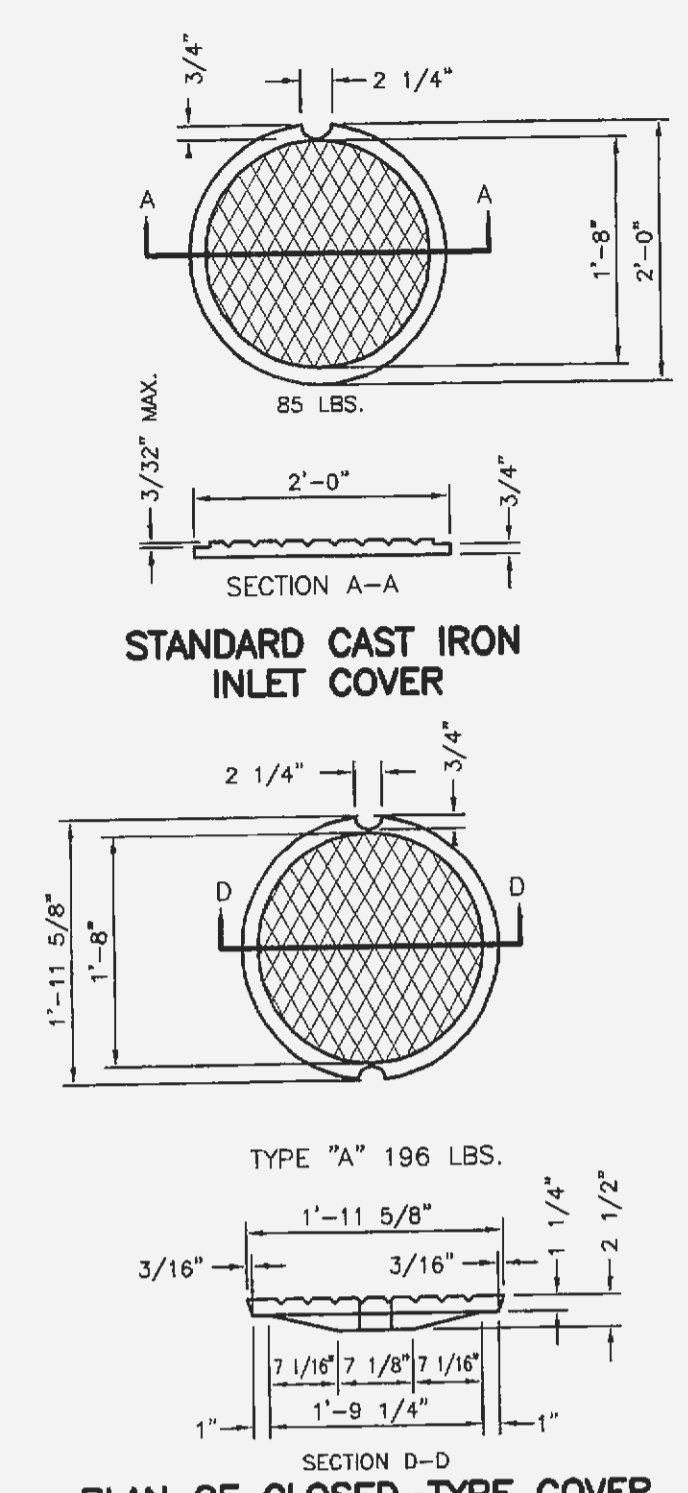


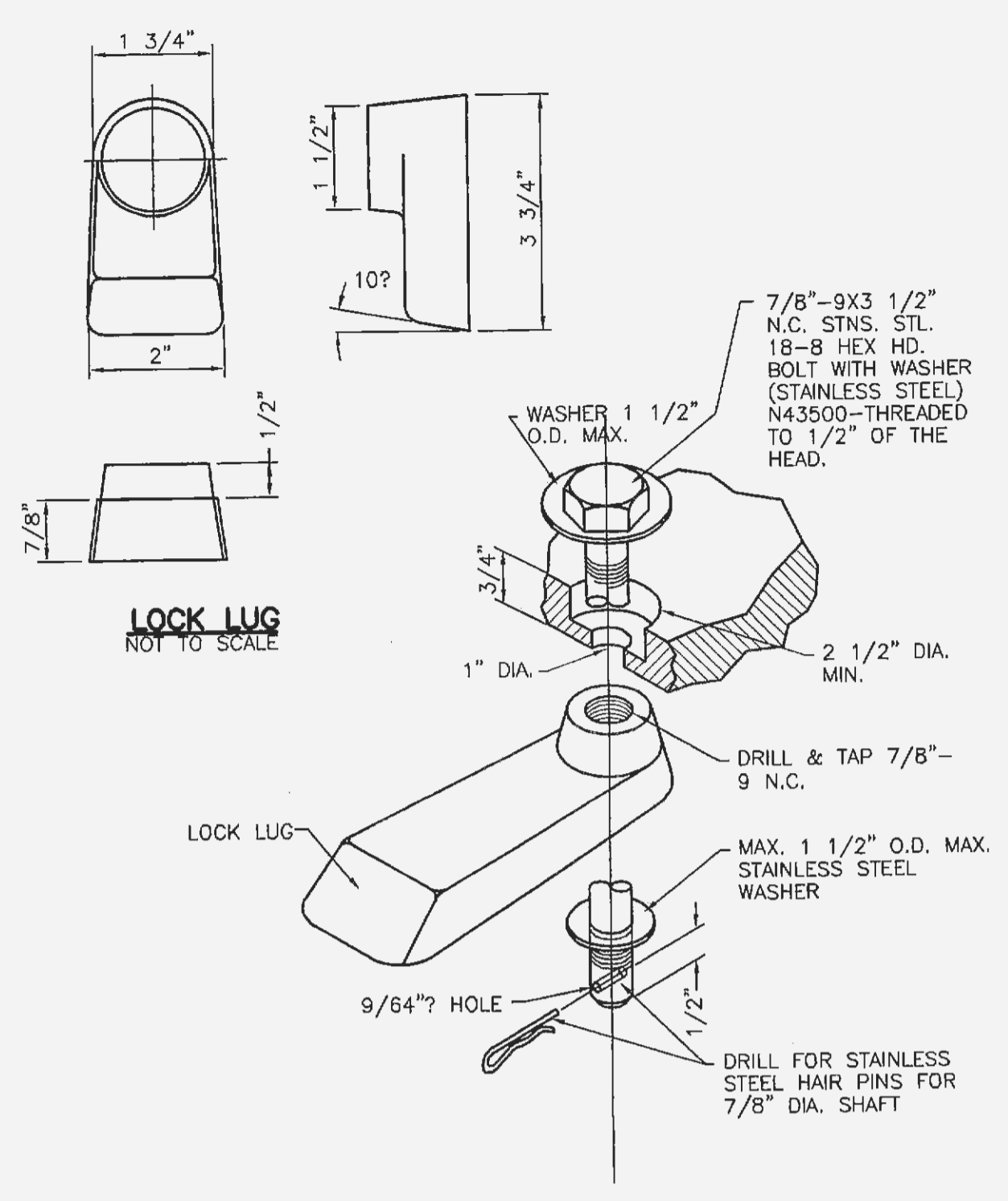
CAST IRON MANHOLE COVERS (LOCK TYPE)



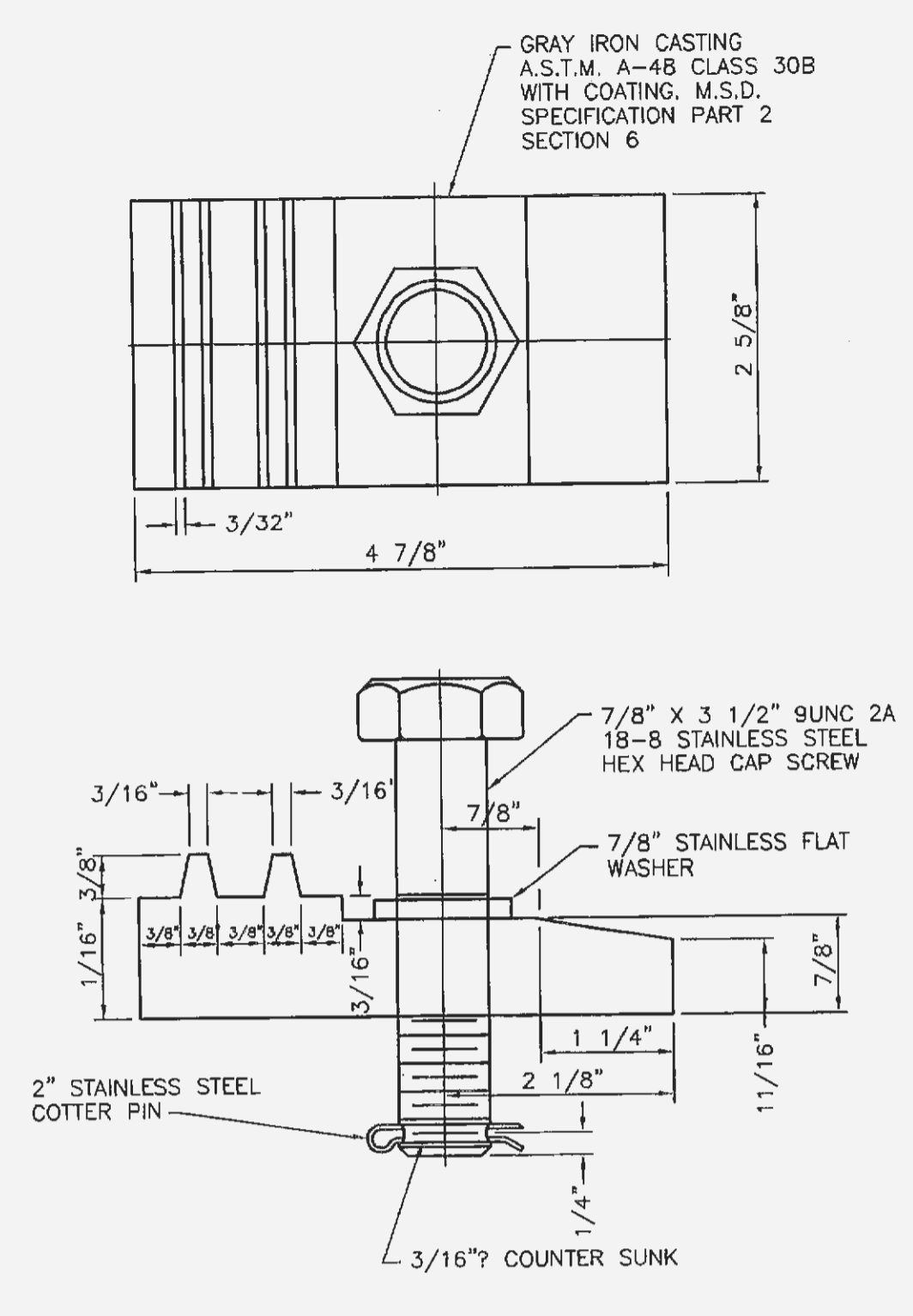
CAST IRON COVERS MANHOLES AND INLETS

NOTE A: MACHINE CONTACTING SURFACES FOR SEAT OF STANDARD MANHOLE FRAME AND BEARING SURFACE OF COVERS.

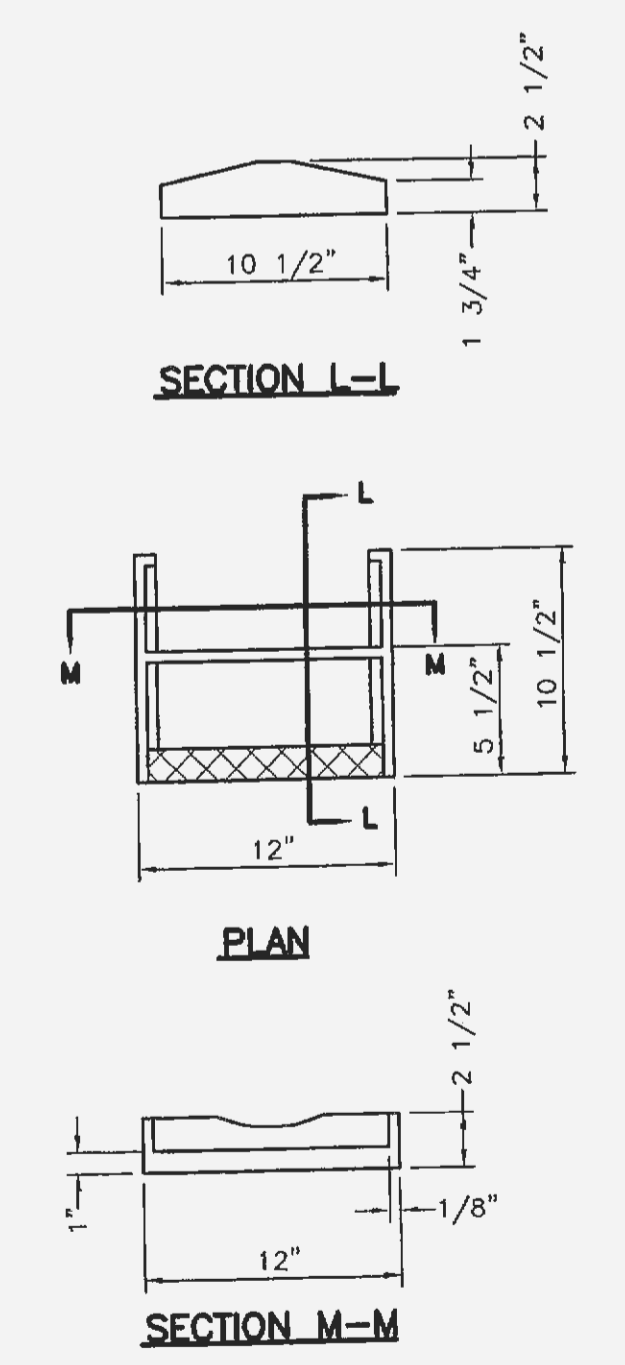
NOTE B: PROVIDE 1/8" RAISED LETTERING APPROXIMATELY 3/4" TO 1" HIGH.



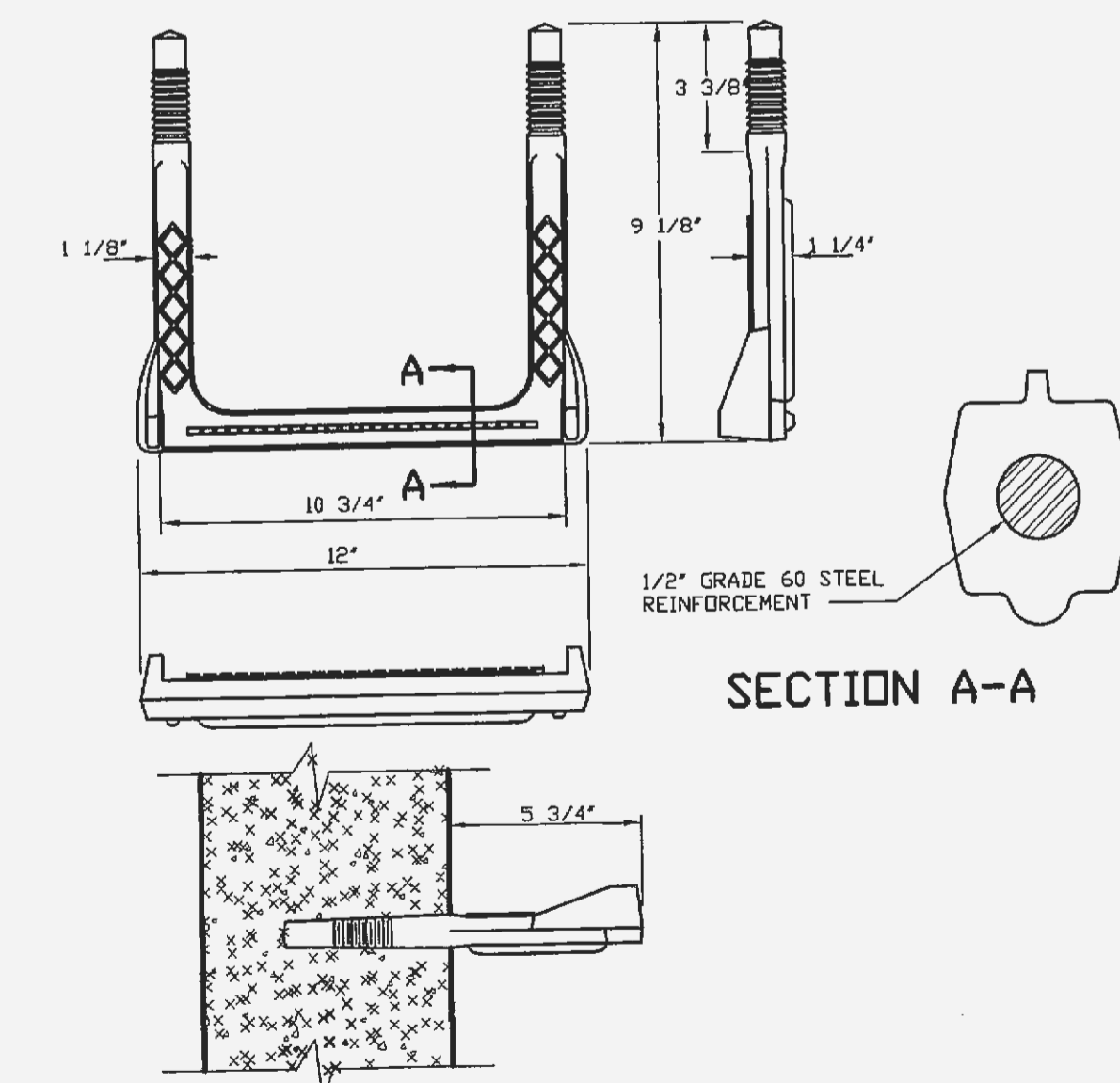
LOCKING DEVICE FOR TYPE 'N' LOCK TYPE MANHOLE COVER



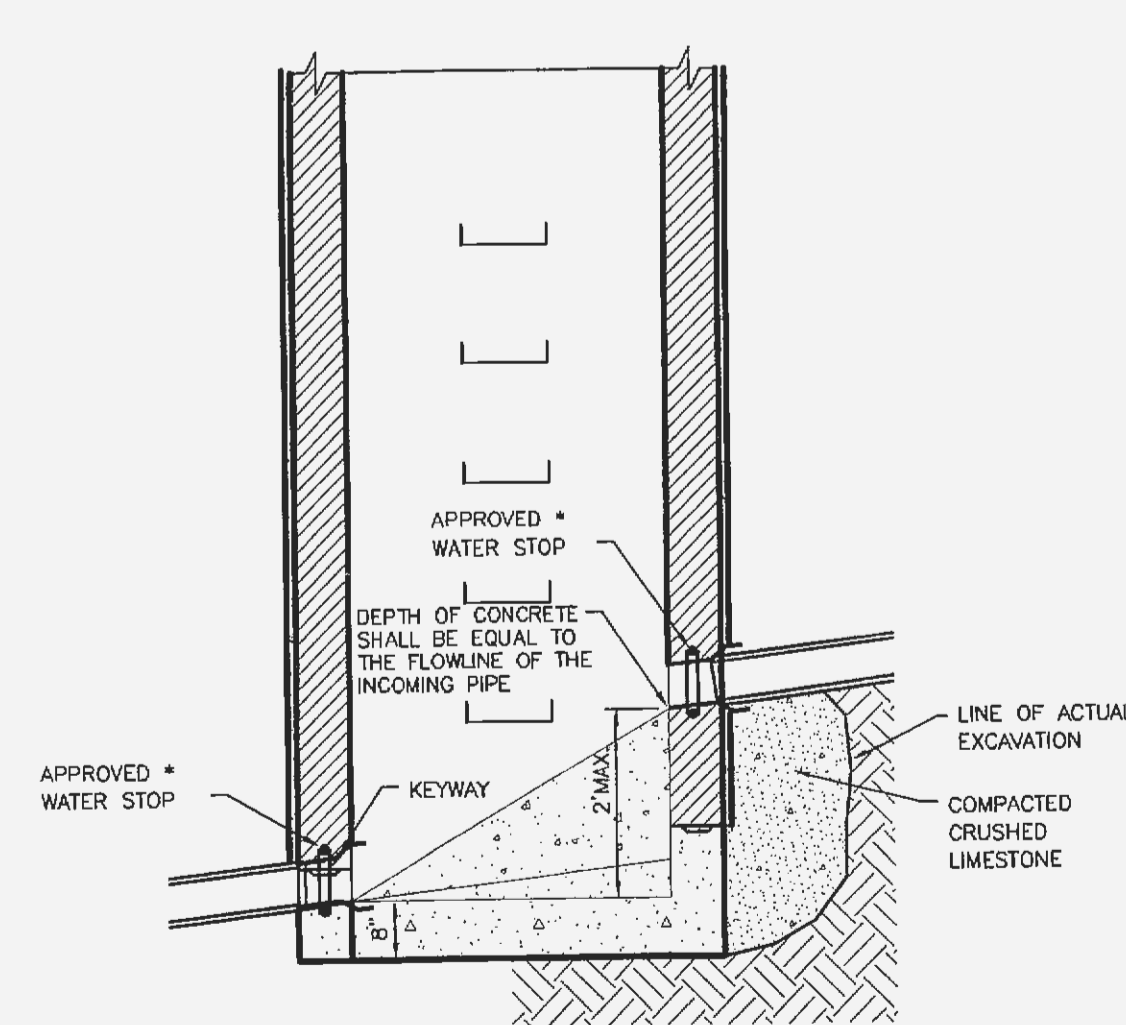
LOCKING DEVICE FOR TYPE 'T' LOCK TYPE MANHOLE COVER



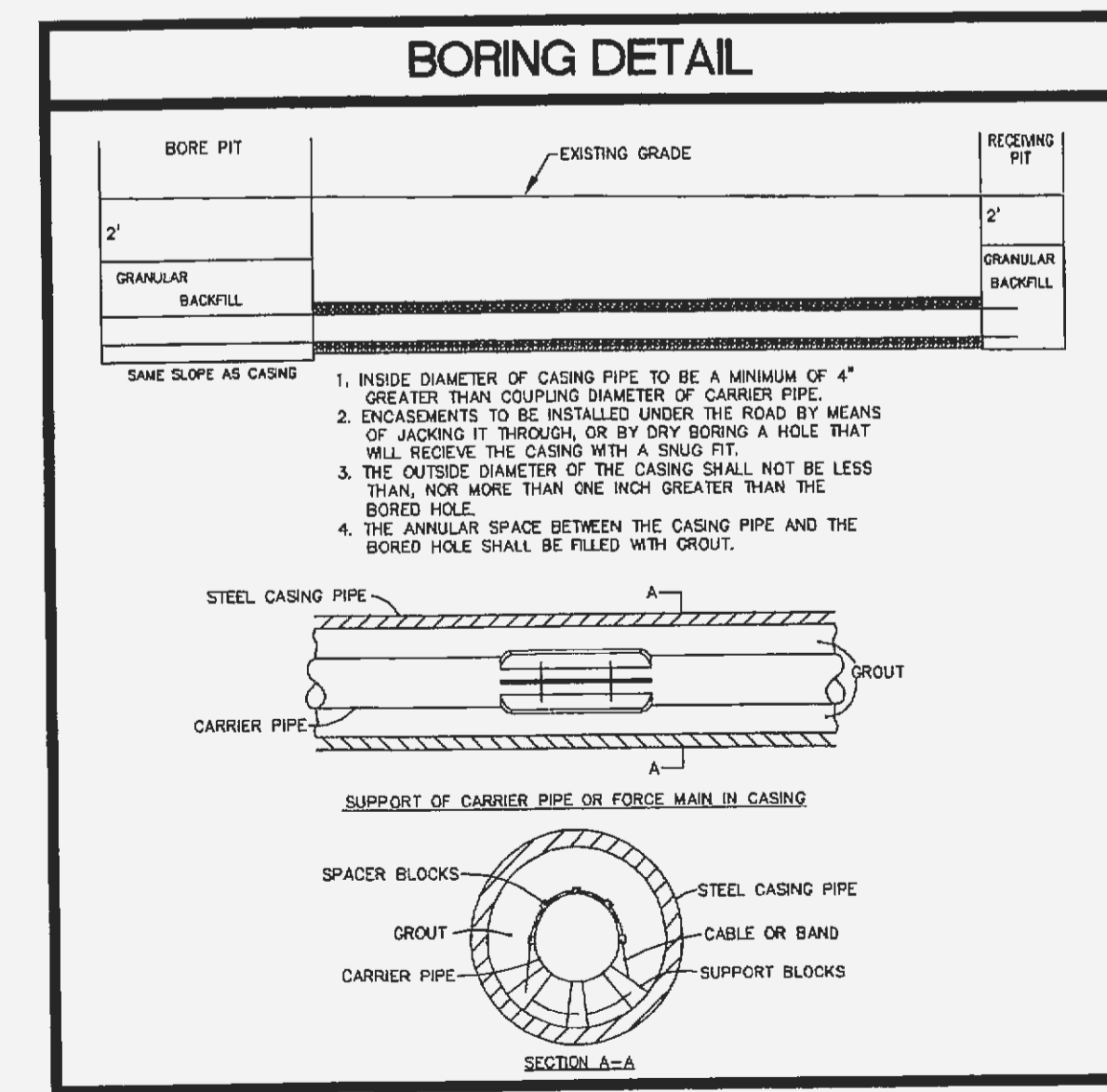
CAST IRON MANHOLE STEPS



COPOLYMER POLYPROPYLENE PLASTIC MANHOLE STEP FOR PRECAST MANHOLE



SWEEP INVERT



10/08/04 REVISED PER CITY COMMENTS

LAUREL SPRINGS SANITARY DETAILS

ST. CHARLES ENGINEERING & SURVEYING, INC.  
801 S. FIFTH STREET, SUITE 202  
ST. CHARLES, MO 63301  
TEL: (636) 947-9607 FAX: (636) 947-9448

REGISTERED PROFESSIONAL ENGINEER  
STATE OF MISSOURI  
MICHAEL J. WELLS  
NO. 2248

ORDER 030849  
DATE 08/13/04  
D4