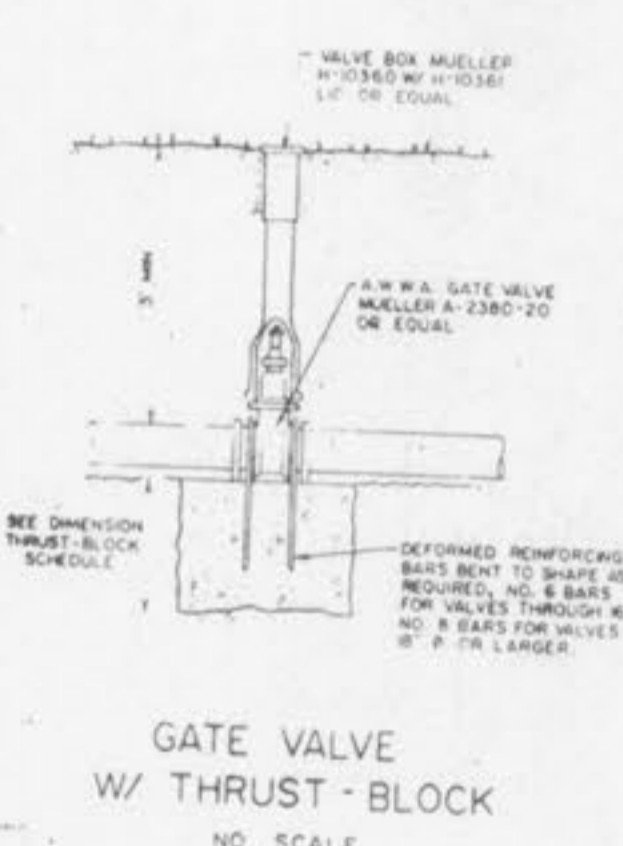
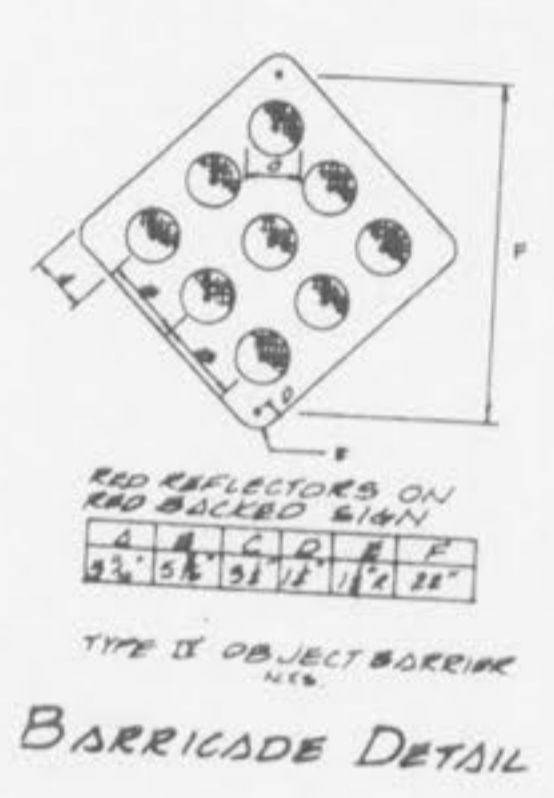
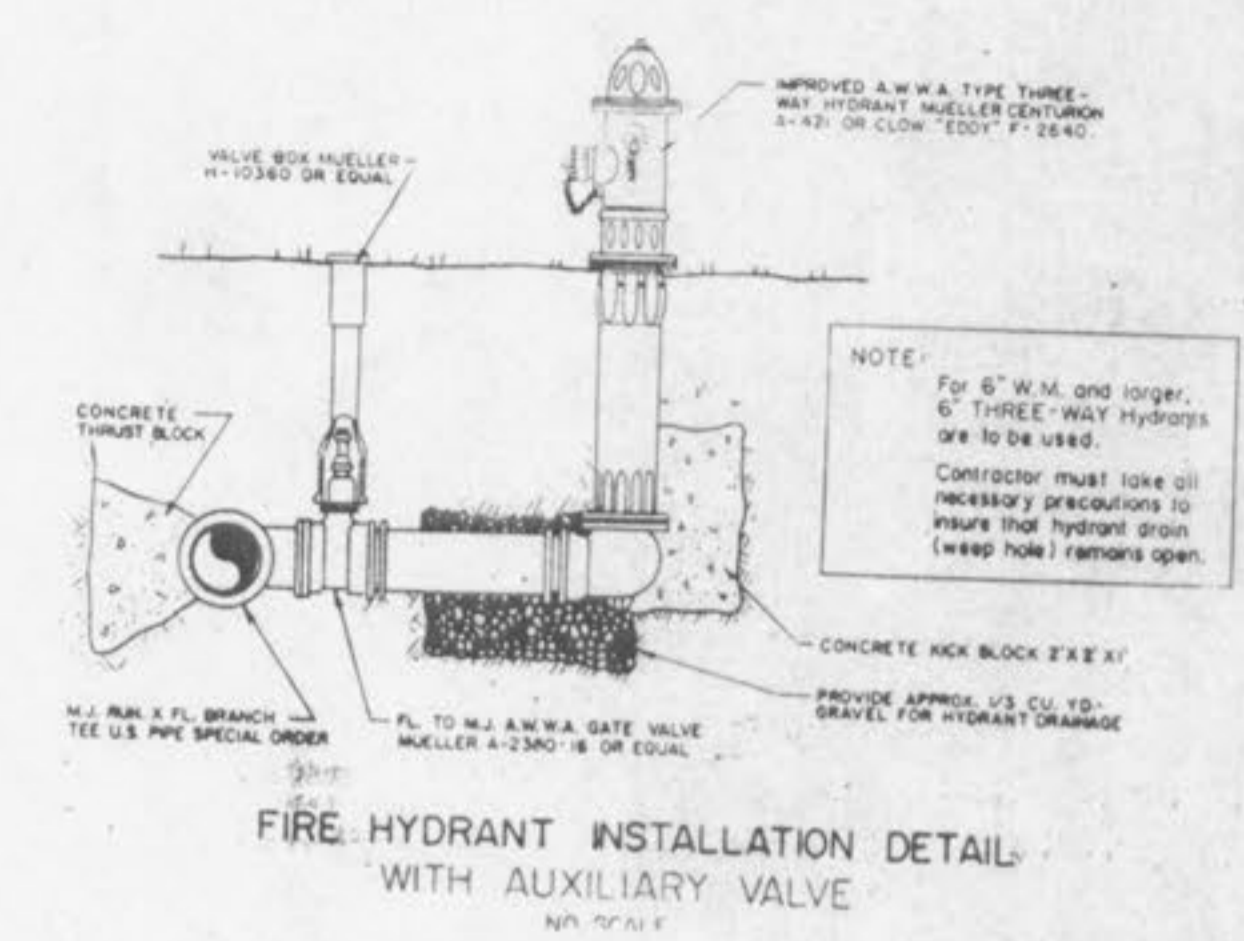
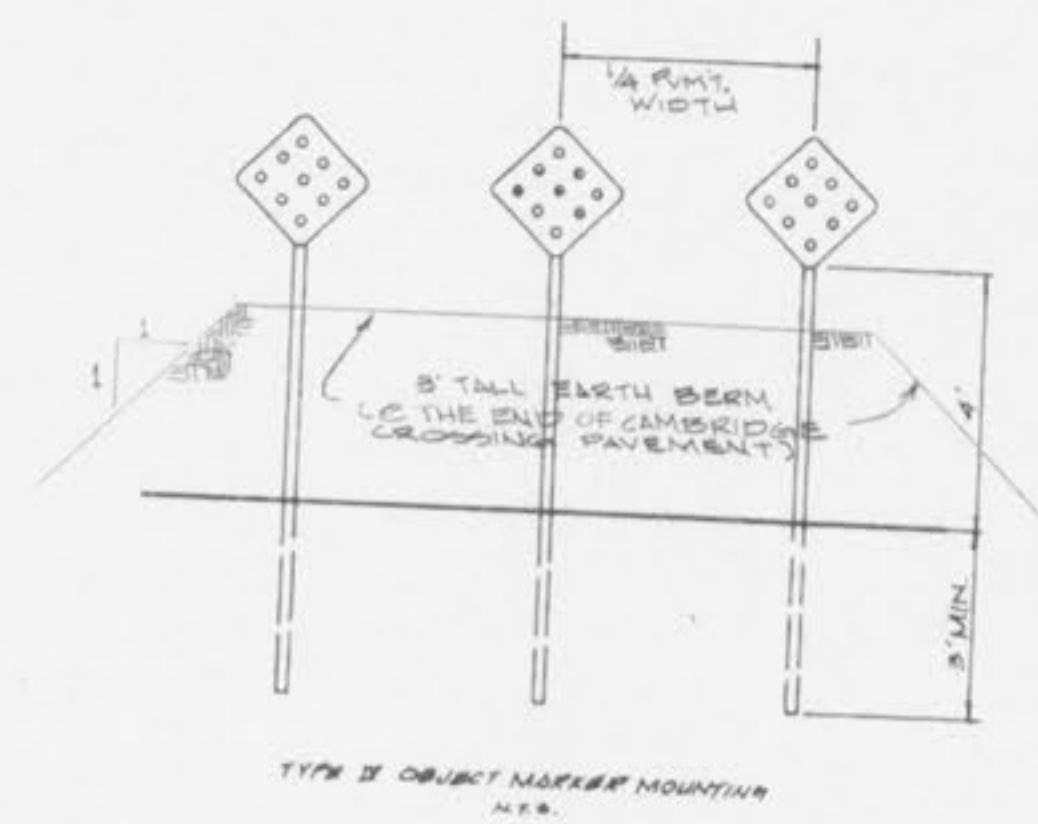
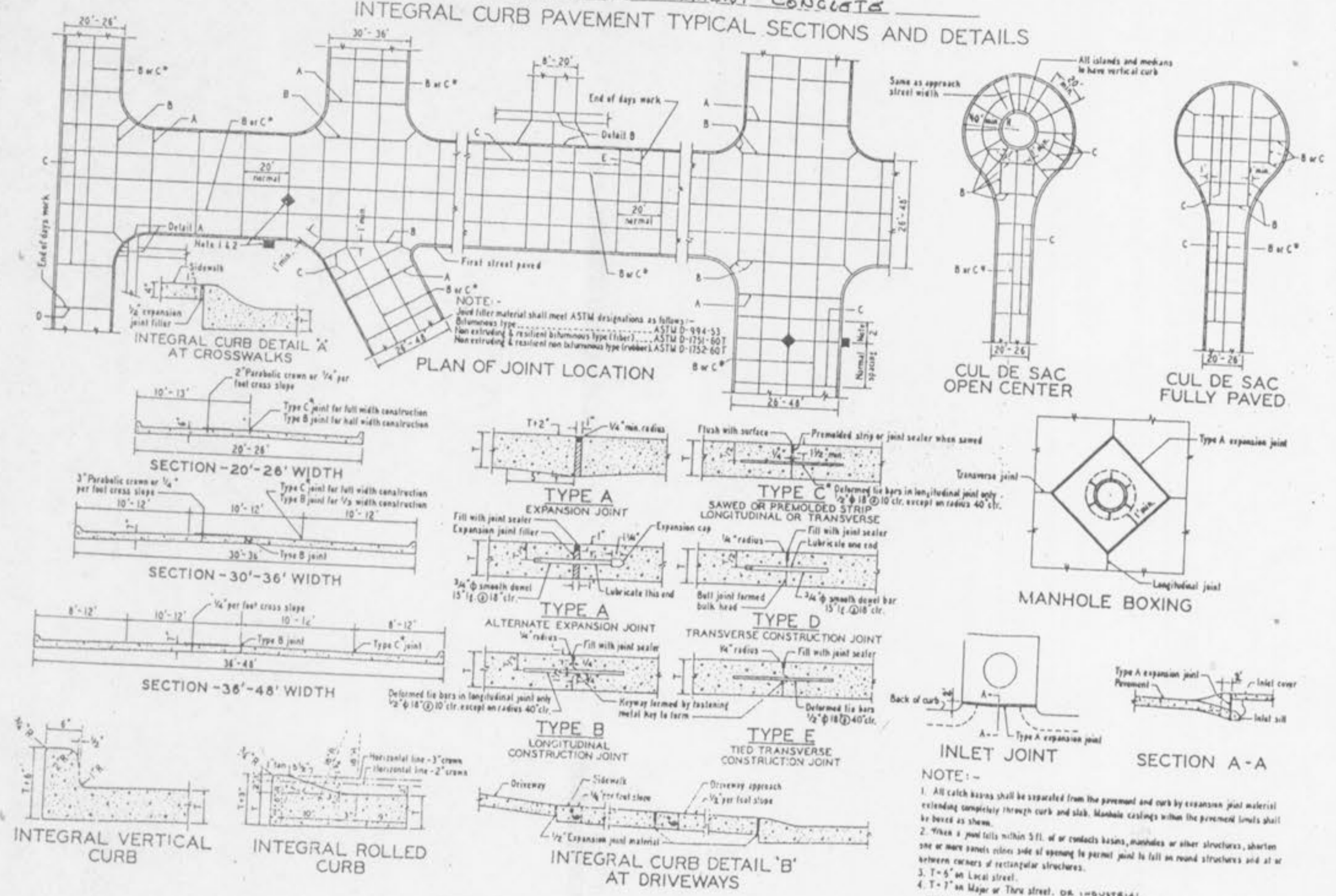


PORTLAND CEMENT CONCRETE INTEGRAL CURB PAVEMENT TYPICAL SECTIONS AND DETAILS

CONSTRUCTION DETAILS



THRUST-BLOCK SCHEDULE

Minimum thrust-block bearing dimensions to bear against undisturbed earth.

WATER MAIN SIZE	BEND 45°	BEND 22 1/2°	TEE	VALVE	CROSS
2"	0.5' x 1'	0.5' x 1'	0.5' x 1'	0.5' x 1'	0.5' x 1'
4"	1' x 1'	1' x 1'	2' x 1'	2' x 1'	1' x 1'
6"	1.5' x 1'	1' x 1'	2' x 1'	2' x 1'	1' x 1'
8"	2' x 1'	1' x 1'	2' x 2.5'	2' x 2'	1' x 1'
10"	2' x 2.5'	1.5' x 2'	2' x 3.5'	2' x 3'	2' x 2'
12"	2' x 3.5'	1.5' x 2.5'	3' x 3.5'	3' x 3'	2' x 3'
16"	3' x 4'	2' x 3'	4' x 4.5'	3' x 4.5'	3' x 3'
18"	3' x 4.5'	2' x 3.5'	5' x 4'	4' x 4.5'	4' x 4'

- GENERAL NOTES**
- Do not scale drawings. Follow dimensions.
 - Sections are symmetrical about construction centerline.
 - For longitudinal and transverse joints, detail and bar requirements and such necessary refer to the Pavement Construction Details for Joints and Curbs, Standard Drawing CS2023.
 - All necessary pavement markings by St. Charles County.
 - Surface drains may not apply at intersections.
 - For details on an inlet structure in a ditch refer to the Sewer Construction Details for Grates and Inlets, Standard Drawing CS2033.
 - Subsided manholes are to be 5' deep. Provide Driveway and 7' Inlet Concrete Driveway. See Traffic Construction Details.
 - Expand when required shall be established as Maintenance, Utility, Sewer and Sidewalk. Examine and located to St. Charles County.

BUCKETT CREEK SEWER DISTRICT TYPICAL CREEK CROSSING

Grouted Rip-Rap is required at all creek crossings where the embankments crossed are steeper than 1 vertical to 2 horizontal ratio slope; and also where there is 3.0 feet or less cover over top of pipe.

Place Rip-Rap on lower 3/4 of slope. Grade upper 1/4 of slope as 1 vertical to 2 horizontal slope for sod or 1 vertical to 2.5 horizontal slope for sod and straw.

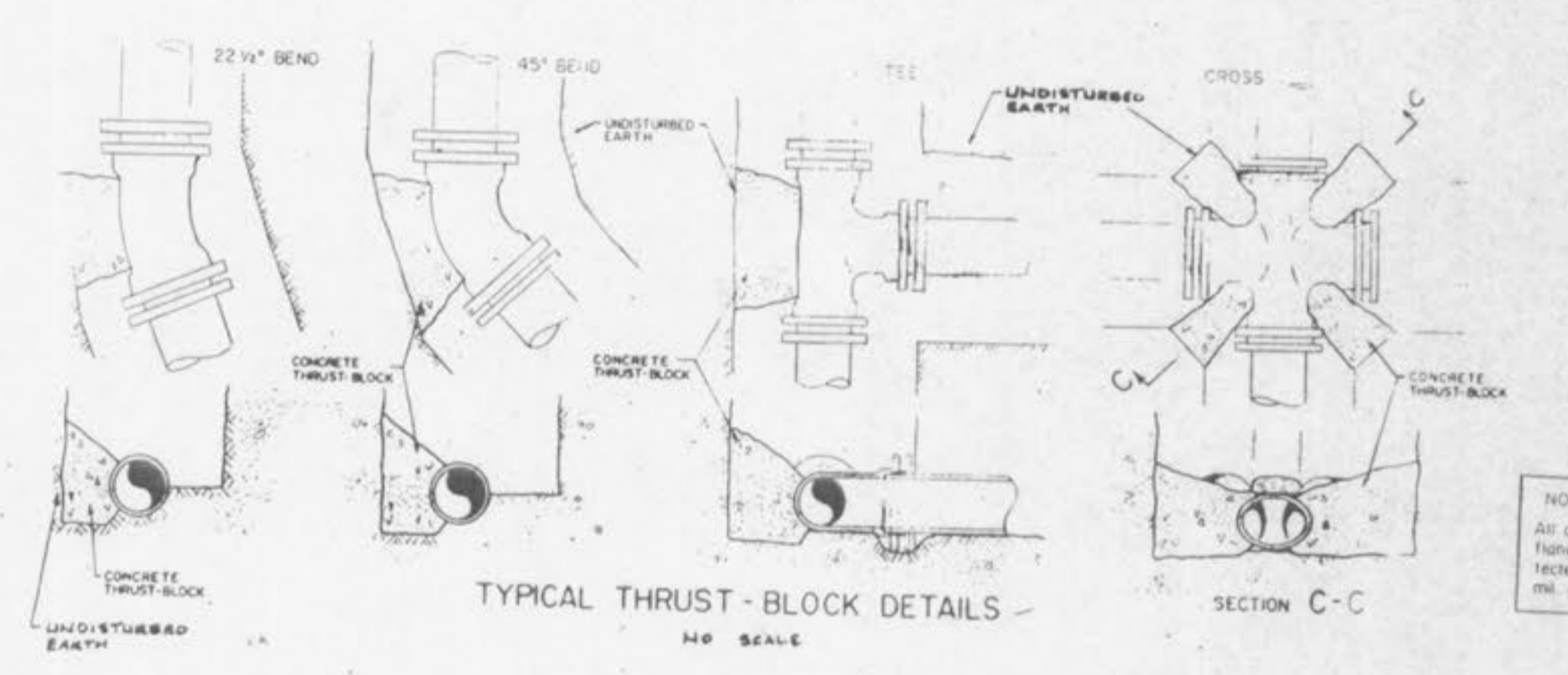
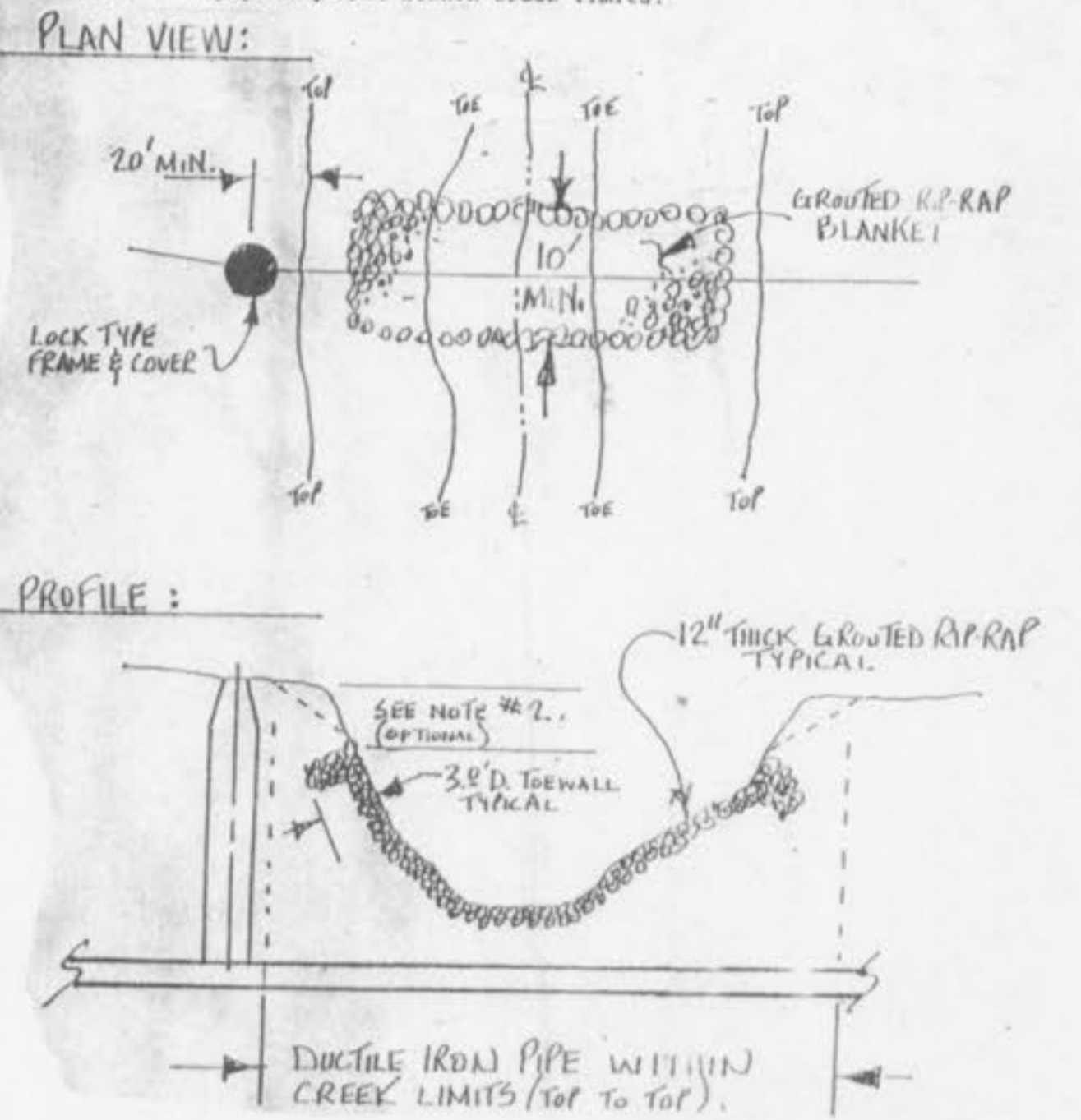
Rip-Rap to be "MSD-5" Gradation, minimum 12" thick, grouted with 8 sack mix, sand cement slurry, broom finish.

Incorporate a 3 feet deep toe wall on embankment's upper edge of Rip-Rap.

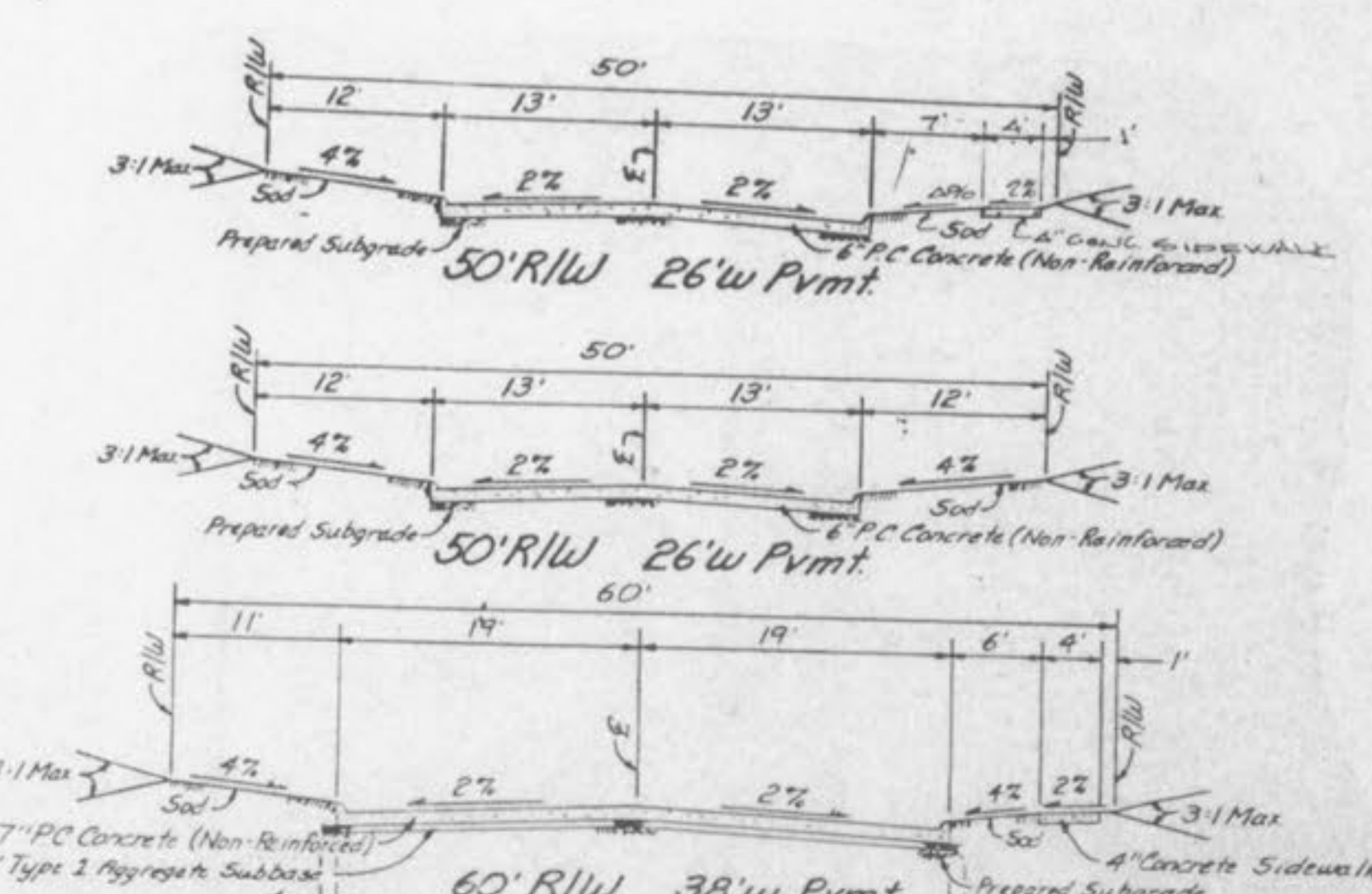
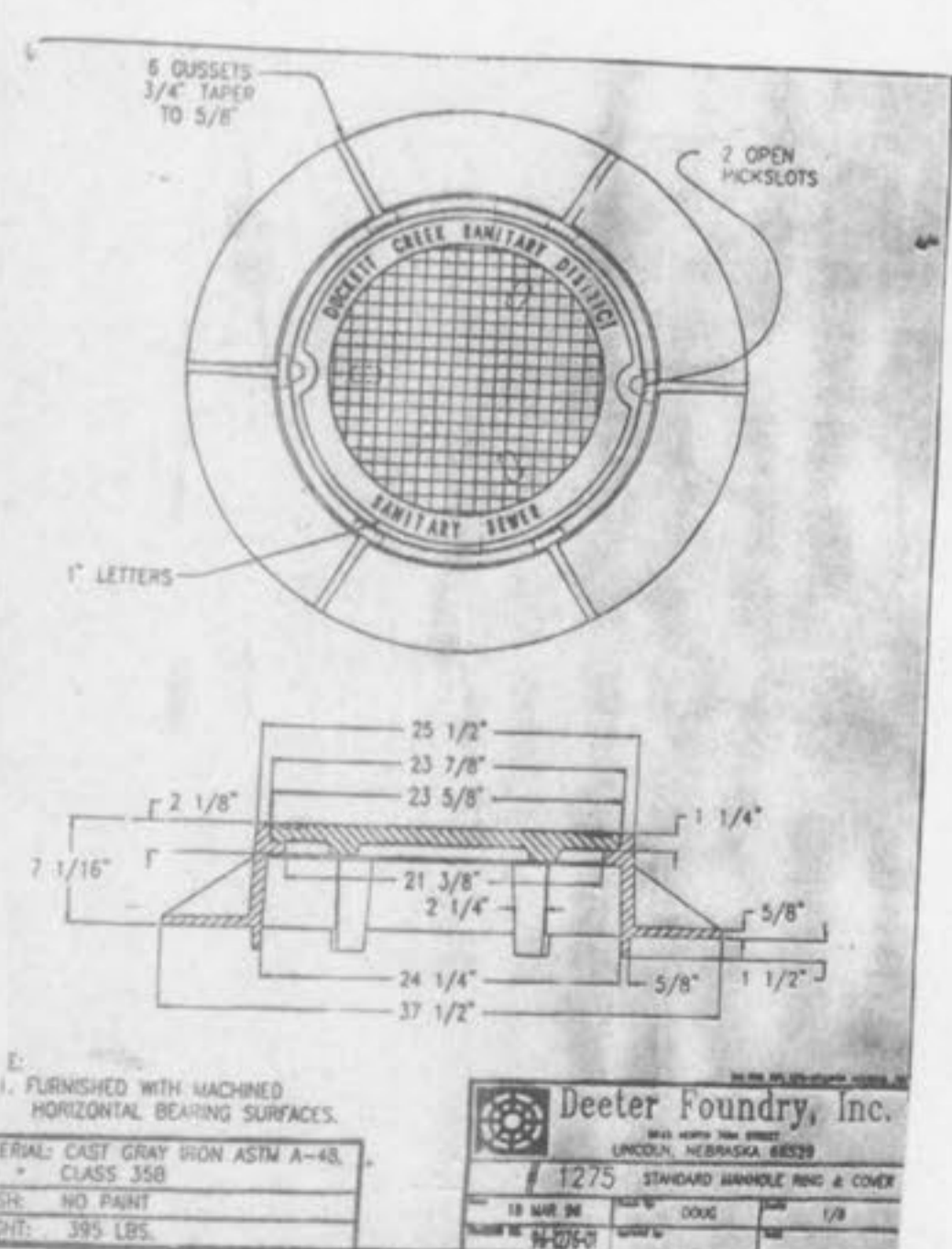
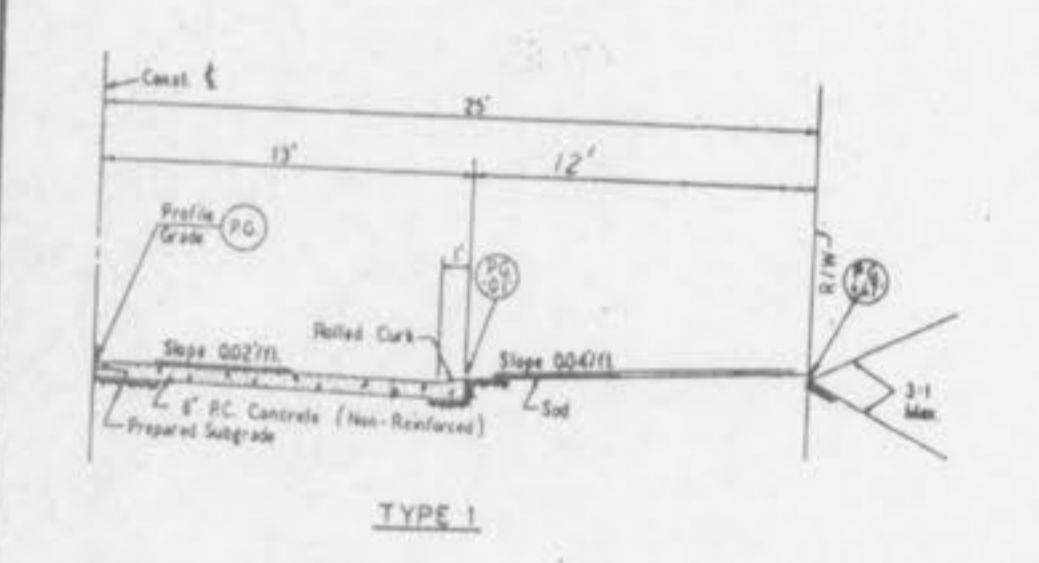
Top surface of Rip-Rap should not be higher than adjacent ground surface.

If pipe has less than 12" cover, a paved channel may be required.

Ductile iron pipe required within creek limits.



NOTE:
All connections, bells, flanges, etc., must be protected from concrete w/ 10 mil. polyethylene film.



CD