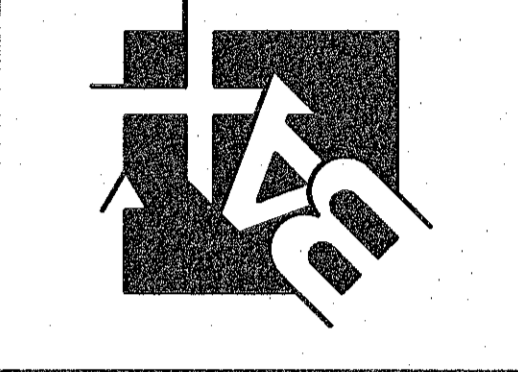


ENGINEERING
 PLANNING
 SURVEYING
 221 Point West Blvd.
 St. Charles, MO 63301
 636-928-5652
 FAX 636-928-1718



DISCLAIMER OF RESPONSIBILITY
 I hereby specify that the documents intended to be
 authorized by my seal are limited to this sheet,
 and I hereby disclaim any responsibility for all other
 drawings, specifications, estimates, reports or other
 documents or instruments relating to or intended to
 be used for any part or parts of the architectural or
 engineering project or projects.



Jeffrey B. Simmons
 CIVIL ENGINEER
 2007030831
 Copyright © 2017
 Box Engineering Company, Inc.
 Authority No. 000655
 All Rights Reserved.

REVISIONS	
10/03/17	P.W.S.D.#2 COMMENTS
10/24/17	CLIENT COMMENTS
10/31/17	DUCKETT COMMENTS
11/01/17	CLIENT COMMENTS
11/05/17	CITY COMMENTS
11/29/17	MODOT COMMENTS
12/13/17	MODOT COMMENTS
12/21/17	CLIENT COMMENTS

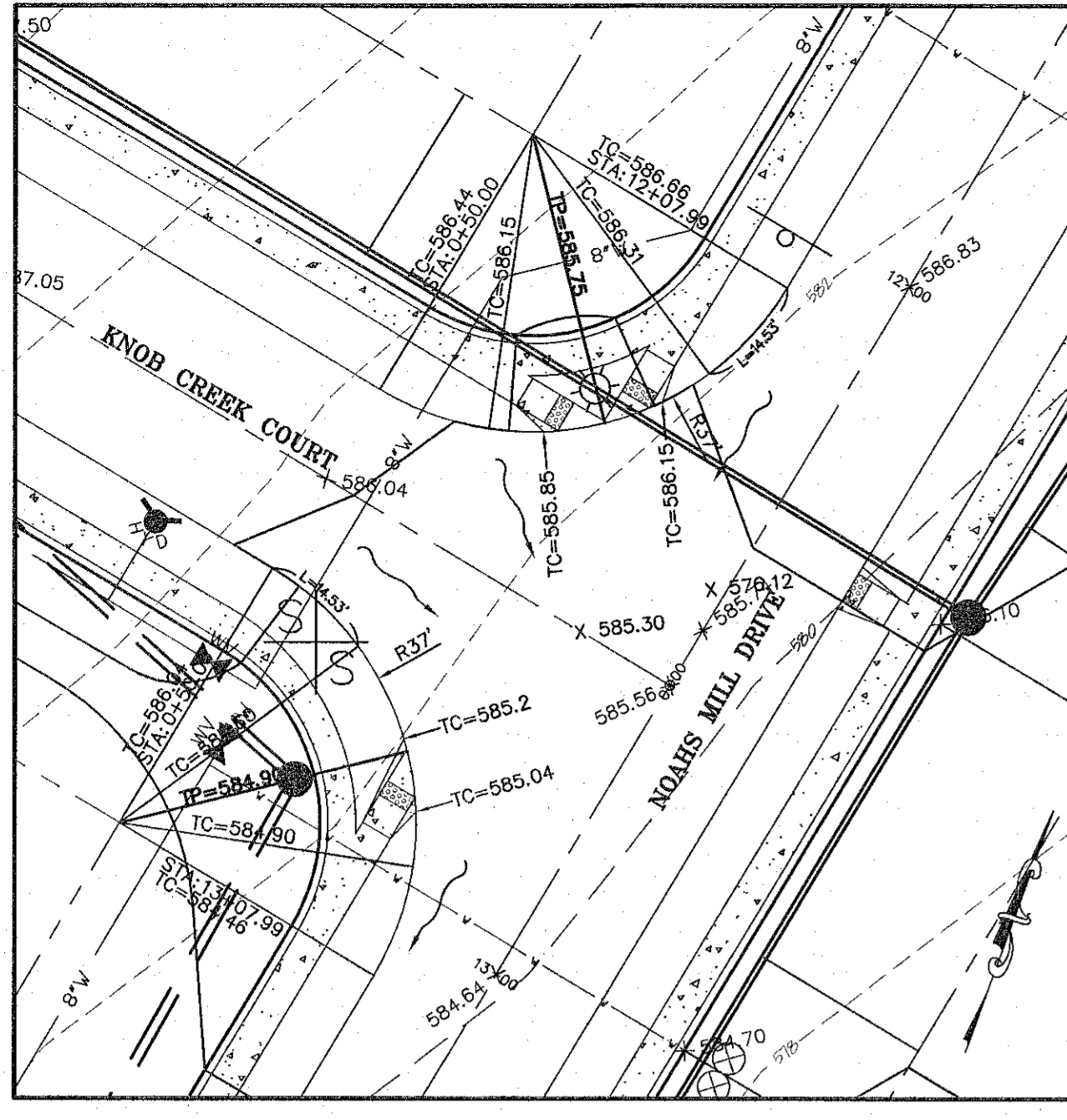
Developer / Owner:
KAPB, L.L.C.
 410 CRESTVIEW DRIVE
 O'FALLON, MO 63366
 636-272-4200

WARPINGS AND INTERSECTION DETAILS

P+Z No.
 #27-15.05, 05/11/17

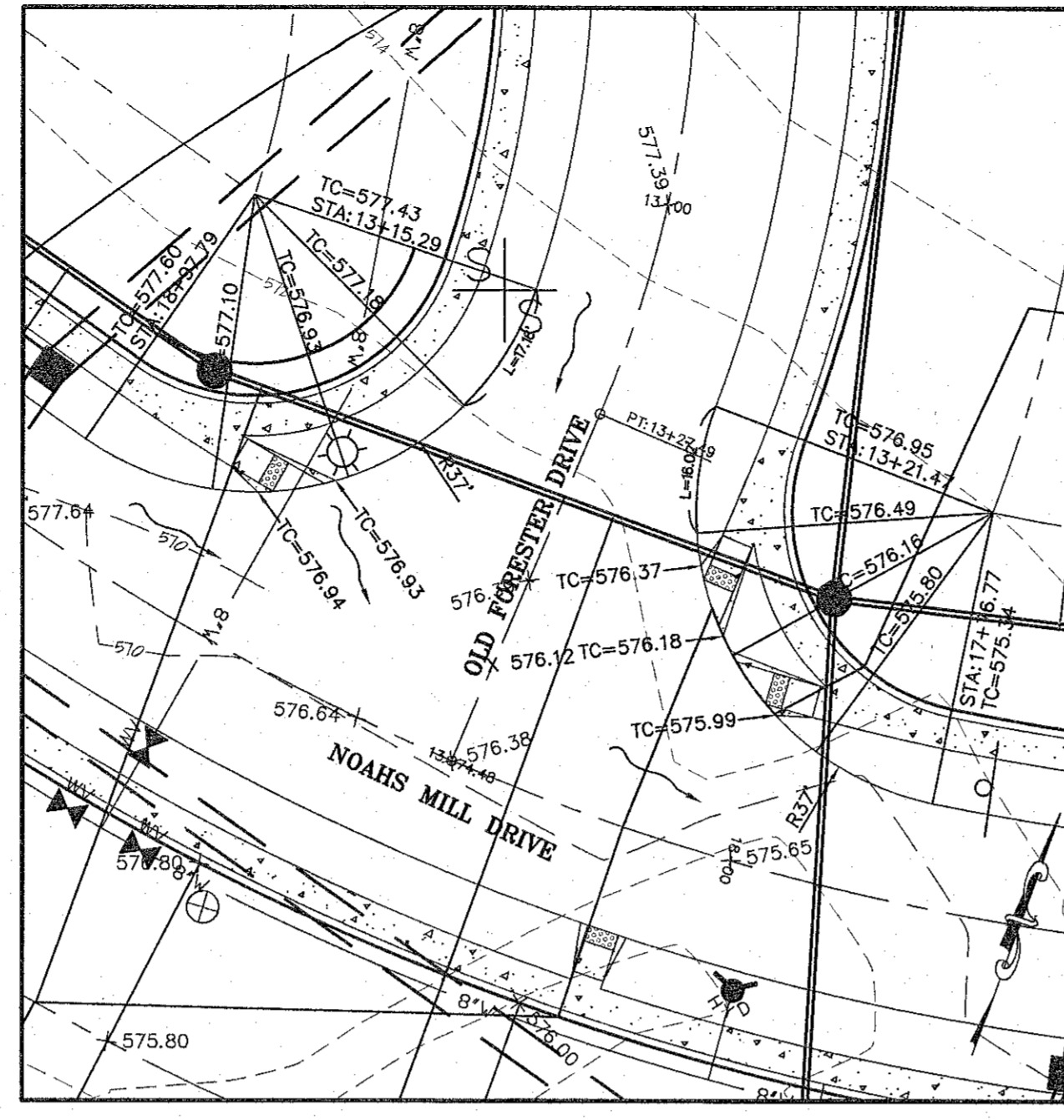
City No.
 #CITY

Page No.
 17 of 41



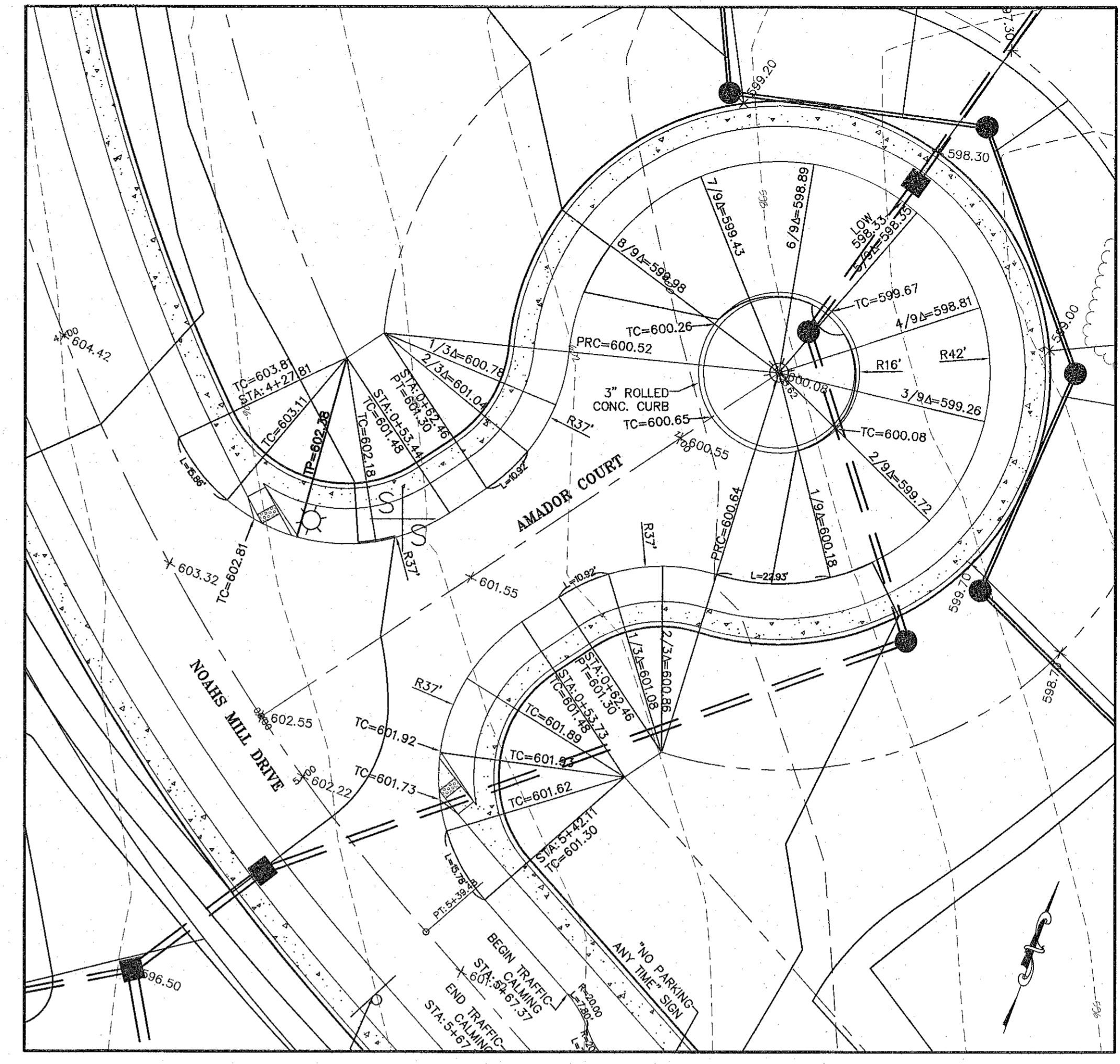
INTERSECTION DETAIL
 SCALE: 1" = 20'

NOTE:
 ALL ELEVATIONS ARE TO TOP OF CURB UNLESS OTHERWISE NOTED.
 TP=TOP OF PAVEMENT



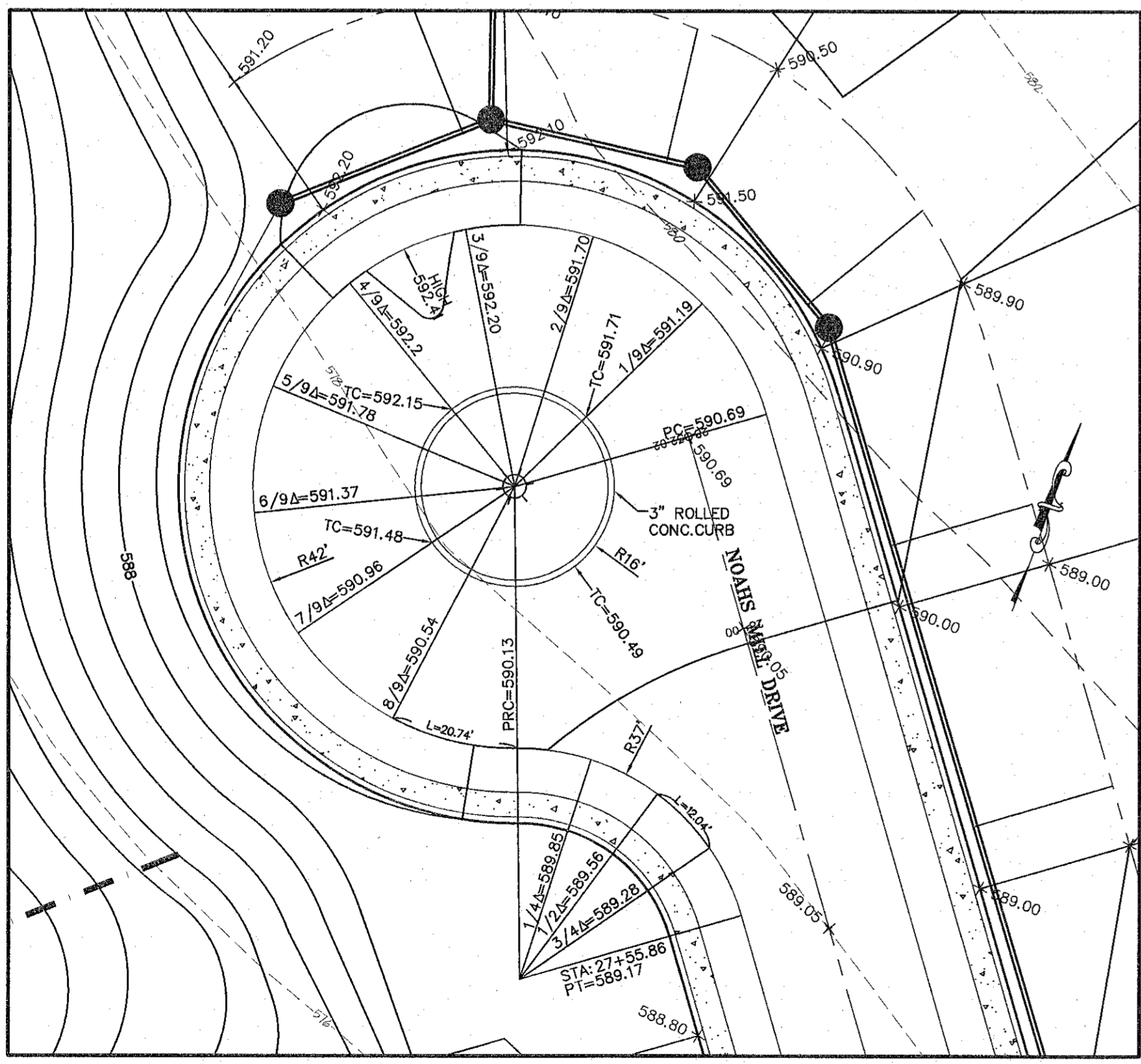
INTERSECTION DETAIL
 SCALE: 1" = 20'

NOTE:
 ALL ELEVATIONS ARE TO TOP OF CURB UNLESS OTHERWISE NOTED.
 TP=TOP OF PAVEMENT



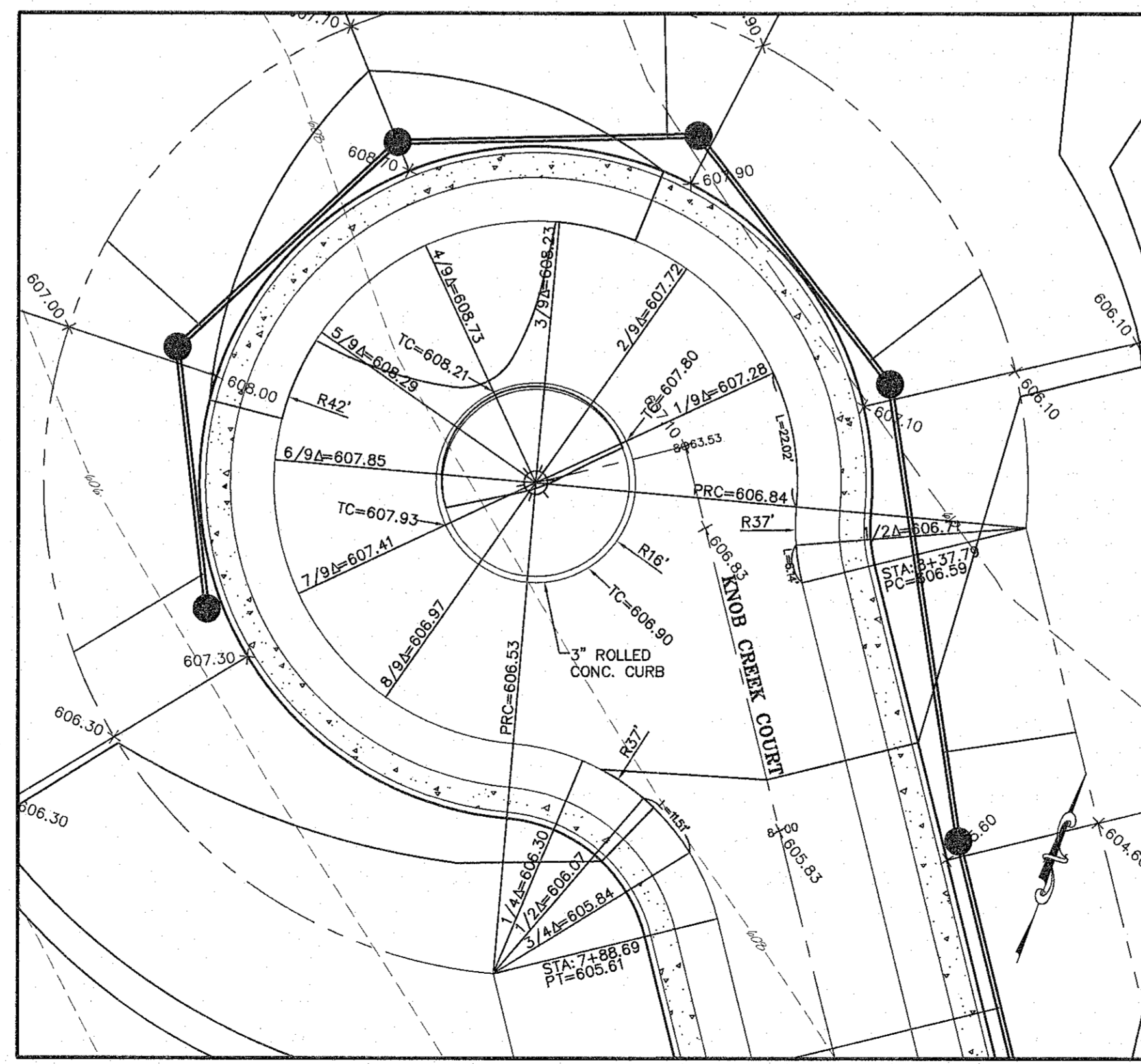
WARPING DETAIL
 SCALE: 1" = 20'

NOTE:
 ALL ELEVATIONS ARE TO TOP OF CURB UNLESS OTHERWISE NOTED.
 TP=TOP OF PAVEMENT



WARPING DETAIL
 SCALE: 1" = 20'

NOTE:
 ALL ELEVATIONS ARE TO TOP OF CURB UNLESS OTHERWISE NOTED.
 TP=TOP OF PAVEMENT



WARPING DETAIL
 SCALE: 1" = 20'

NOTE:
 ALL ELEVATIONS ARE TO TOP OF CURB UNLESS OTHERWISE NOTED.
 TP=TOP OF PAVEMENT