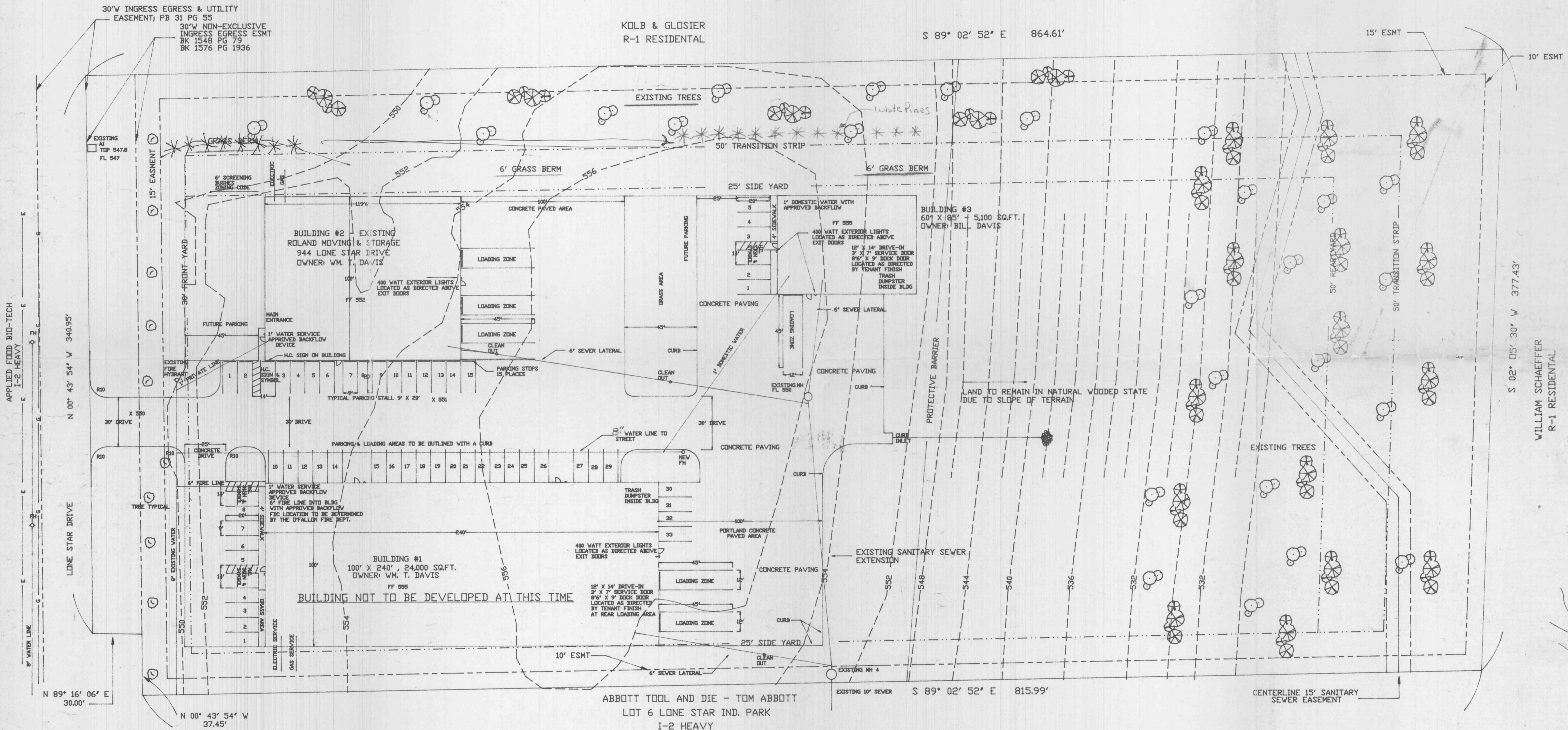


SITE PLAN - LOT 5 LONE STAR INDUSTRIAL PARK

CONSTRUCTION SITE PLAN FOR:

BUILDING #3 - 5,100 SQ.FT. SPECULATIVE BUILDING



LOT 5 LONE STAR INDUSTRIAL PARK
 SITE PLAN
 CONSTRUCTION SITE PLAN FOR:
 BUILDING #3 - 5,100 SQ.FT. SPECULATIVE BUILDING

INDEX:
 SHEET 1 - COVER SHEET
 SHEET 2 - SITE PLAN
 SHEET 3 - DETAILS
 SHEET 4 - FLOOR FINISHES
 SEE NOTE BUILDING #2 EXISTING, ROLAND MOVING & STORAGE



BILL DAVIS, INC.
 2209 DROSTE ROAD
 ST. CHARLES, MO. 63301
 (314) 949-0680
 FAX: (314) 949-6706
 SHEET 2 OF 4
 SCALE 1" = 30'
 DATE: 8/8/96
 REV. 9/16/96
 REV. 8/25/95
 REV. 7/17/97

File APPROVED
 5/29/98
 Jan Collup
 04-88-BUT-01
 TRUE