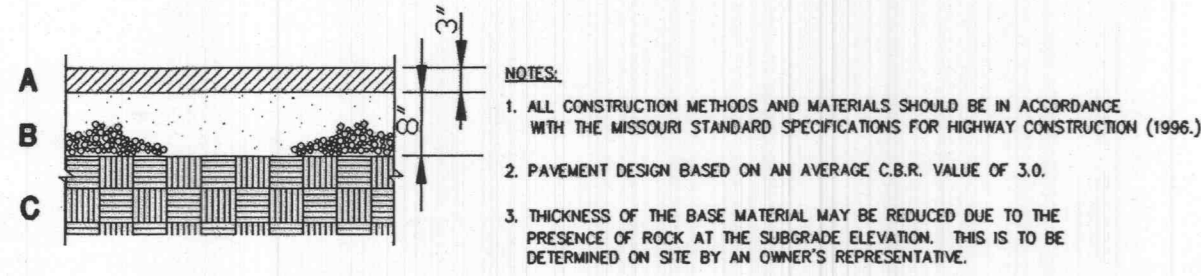


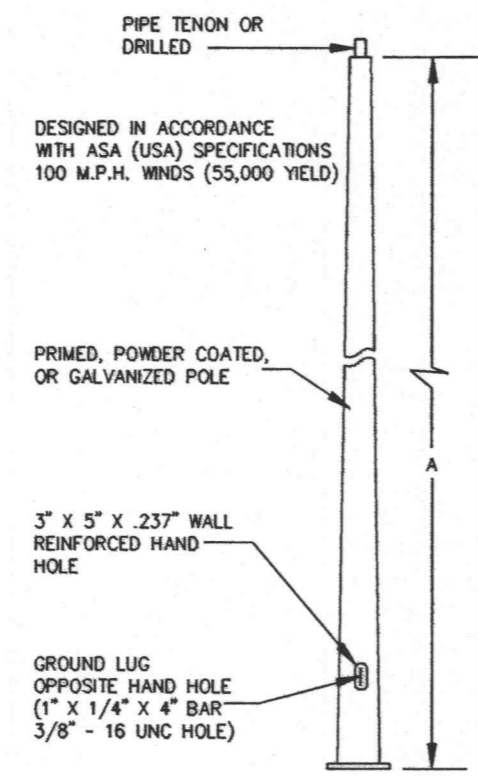
- A.** 3" INCHES ASPHALTIC CONCRETE MISSOURI TYPE "1-C" BITUMINOUS SURFACE COURSE. (TYPE "1-C" SECTION 403 PGS 148 TO 163 OF THE MISSOURI STANDARD SPECIFICATIONS FOR HIGHWAY CONSTRUCTION (MSHC) 1996)
- B.** 8" INCHES OF AGGREGATE BASE (TYPE "1" SECTION 1007, PG 497 OF THE MSHC, 1996). WELL GRADED GRANULAR FILL PLACED IN THE UPPER 2" BENEATH ANY PAVEMENT AREAS SHOULD BE COMPACTED TO A DRY DENSITY OF NOT LESS THAN 95 PERCENT OF THE STANDARD PROCTOR MAXIMUM DRY DENSITY OF THE MATERIAL. WELL GRADED GRANULAR FILL THAT IS MORE THAN 2" BELOW PAVEMENT AREAS SHOULD BE COMPACTED TO NOT LESS THAN 90 PERCENT OF THE STANDARD PROCTOR MAXIMUM DRY DENSITY.
- C.** SUBGRADE SHOULD BE SCARIFIED TO A DEPTH OF ABOUT 6 INCHES, THE MOISTURE CONTENT OF THE SOIL ADJUSTED TO TO NEAR ITS OPTIMUM MOISTURE CONTENT, AND THE SUBGRADE COMPACTED AS FOLLOWS:
 THE UPPER 2" BENEATH ANY PAVEMENT AREAS SHOULD BE COMPACTED TO A DRY DENSITY OF NOT LESS THAN 95% OF THE STANDARD PROCTOR MAXIMUM DRY DENSITY. SUBGRADE MORE THAN 2" BELOW PAVEMENT AREAS SHOULD BE COMPACTED TO 90% OF THE STANDARD PROCTOR MAXIMUM DRY DENSITY.

EARTH FILL MATERIAL WITHIN THE UPPER 2" OF EARTH FILL BENEATH ANY PAVEMENT AREAS SHOULD BE COMPACTED TO A DRY DENSITY OF NOT LESS THAN 95% OF THE STANDARD PROCTOR MAXIMUM DRY DENSITY OF THE MATERIAL. EARTH FILL MORE THAN 2" BELOW PAVEMENT AREAS SHOULD BE COMPACTED TO NOT LESS THAN 90% OF THE STANDARD PROCTOR MAXIMUM DRY DENSITY.

ALL PLASTICITY FILL MATERIALS SHOULD GENERALLY BE WITHIN 3% WET OR DRY, OF THE OPTIMUM MOISTURE CONTENT OF THE MATERIAL AS DETERMINED BY THE STANDARD PROCTOR COMPACTION TEST, ASTM D 698. HIGH PLASTICITY FILL MATERIALS SHOULD BE MOISTURE CONDITIONED TO A UNIFORM MOISTURE CONTENT THAT IS 1 TO 4 PERCENT WET OF THE OPTIMUM MOISTURE CONTENT PRIOR TO COMPACTION.



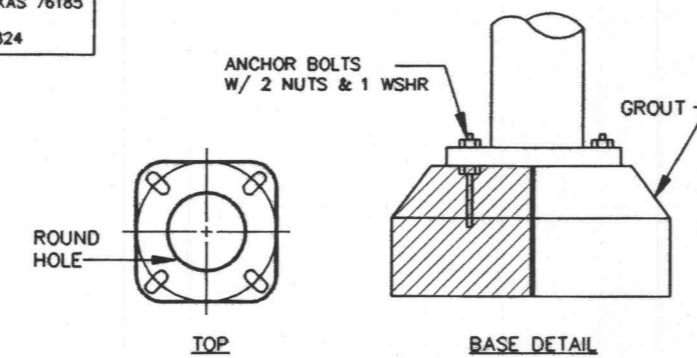
STANDARD DUTY ASPHALTIC PAVEMENT
N.T.S. CS17



ROUND TAPERED STEEL POLE

SPACE BETWEEN POLE BASE PLATE AND TOP OF CONCRETE FOUNDATION MUST BE FILLED WITH GROUT OR WIND WARRIANTY IS VOID.

WLS LIGHTING SYSTEMS
 P.O. BOX 100519
 FORT WORTH, TEXAS 76185
 800-453-8711
 FAX 817-757-4824



TYPE	QTY	POLE	QTY	FIXTURE	QTY	WATTS/ASSEMBLY
A	4	30'	1	WLS-W5-1000-MNR	2	2160

NOTE: ALL POLES TO BE MOUNTED ON CONCRETE PEDESTALS

NOTE: CONTRACTOR SHALL VERIFY QUANTITIES WITH SITE PLAN PRIOR TO ORDERING

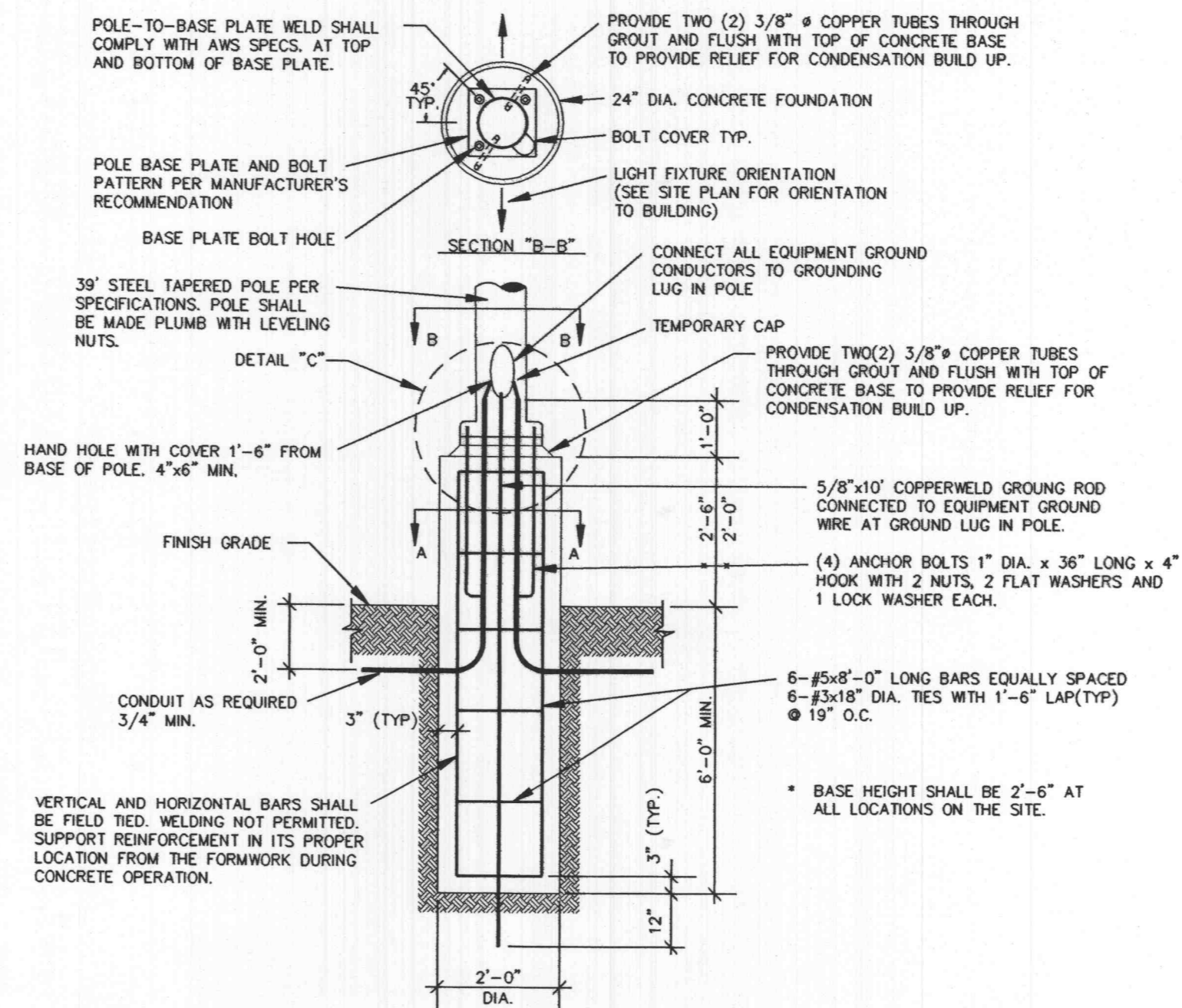
LIGHTING SCHEDULE

CATALOG NO.	A HT.	GAUGE QTY.	SHAFT SIZE	BASE PLATE BOLT CIRCLE	ANCHOR BOLT	WEIGHT (LBS.)	MAX. EPA
30-0-BT	30'	11	8.0" TO 3.2"	11.00" SQ.	1" x 40"	297	19

ADD GA/ AFTER CATALOG NO. IF GALVANIZED POLE IS DESIRED. DENOTE TENON SIZE (O.D. ONLY) IF OTHER THAN 2 3/8". ALL WELDS BY CERTIFIED WELDERS.

FIXTURE ORDER INFORMATION

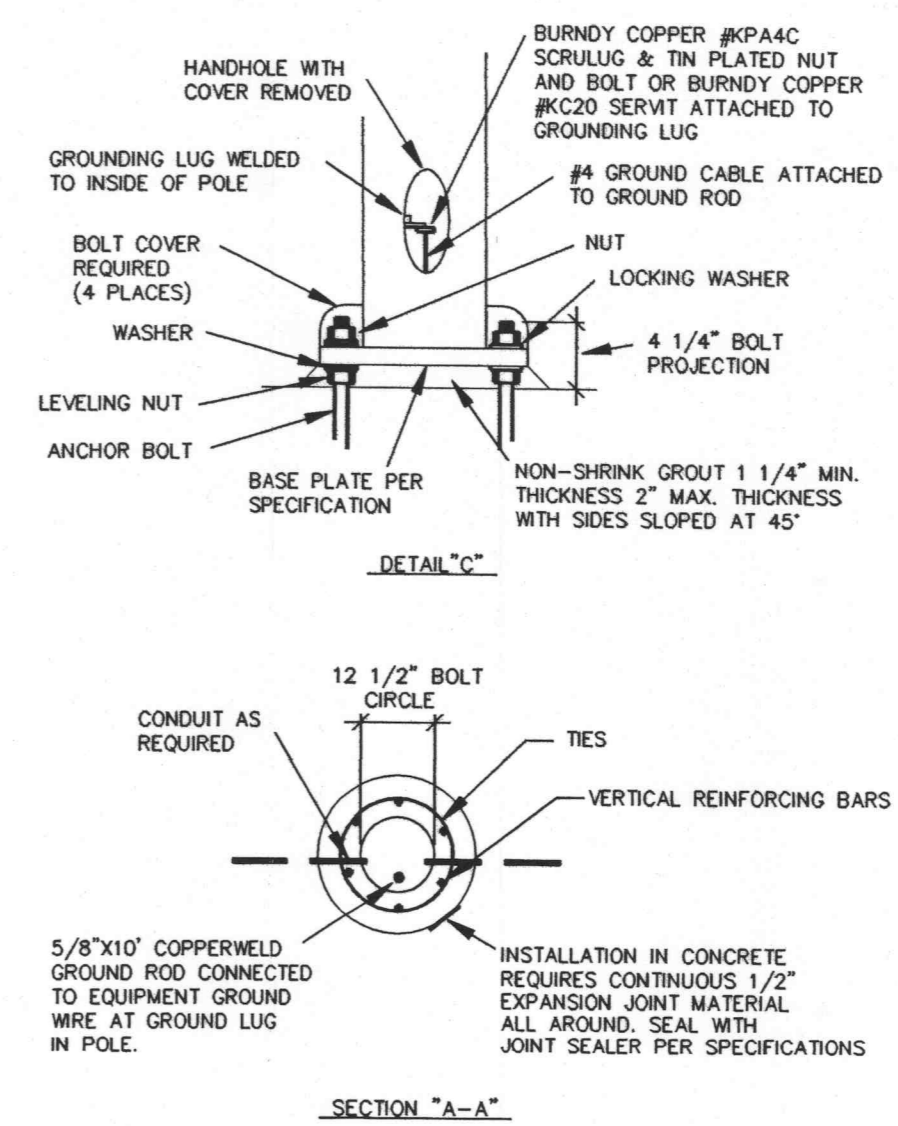
NOTE: ALL PARKING LOT LIGHTING POLES AND FIXTURES, INCLUDING LAMPS AND PAINT, WILL BE PROVIDED BY WAL-MART AND INSTALLED BY THE ELECTRICAL CONTRACTOR. THE ELECTRICAL CONTRACTOR SHALL PROVIDE WAL-MART A ONE-YEAR WARRANTY CERTIFICATE. ALL INCURRED COSTS FOR RECEIVING, STORAGE, UNWRAPPING OF FACTORY PAINTED POLES, LIABILITY AND WARRANTY LABOR SHALL BE INCLUDED IN THE INSTALLATION CONTRACT PRICE.



NOTES:

- 3500 PSI MIN. 28 DAY COMPRESSIVE STRENGTH CONCRETE WITH GRADE 60 REINFORCING STEEL.
- IF WATER IS PRESENT IN HOLE, REMOVE BEFORE POURING CONCRETE.
- FOUNDATION EXCAVATION SHALL BE BY 24" AUGER IN UNDISTURBED OR PROPERLY COMPACTED FILL PER SPECIFICATIONS.
- FOUNDATION SHALL HAVE A MINIMUM ALLOWABLE END BEARING PRESSURE OF 2000 PSF.
- FOUNDATION HAS BEEN DESIGNED FOR A COHESIVE SOIL BASED ON A MINIMUM COHESIVE VALUE OF 1000 PSF.
- FOUNDATION HAS BEEN DESIGNED FOR A GRANULAR SOIL BASED ON A MINIMUM LATERAL SOIL PRESSURE OF 1000 PSF, UTILIZING AASHTO FIGURE 1.8.2C(4), OF EMBEDMENT OF POSTS WITH OVERTURNING LOADS.
- EXPOSED CONCRETE AND GROUT SHALL BE PAINTED TRAFFIC YELLOW.
- DETAIL FOR 30' POLE WITH MAX. FIXTURE EPA, 4.8 SQ. FT.

TYPICAL SITE LIGHTING POLE BASE
NO SCALE CS40



REVISIONS	BY

WOLVERTON & ASSOCIATES, INC.
 5600 OAKBROOK PARKWAY / SUITE 100 / NORCROSS, GEORGIA 30093
 770 447-9970 FAX
 770 447-8999 PHONE

PROPOSED LONGHORN STEAKHOUSE
 O'FALLON, ST. CHARLES COUNTY, MO
 RARE HOSPITALITY
 ATLANTA, GA.

DRAWN	MHE
CHECKED	JCW
DATE	7/02/99
SCALE	NO SCALE
JOB No.	99173
SHEET	C-7
OF SHEETS	