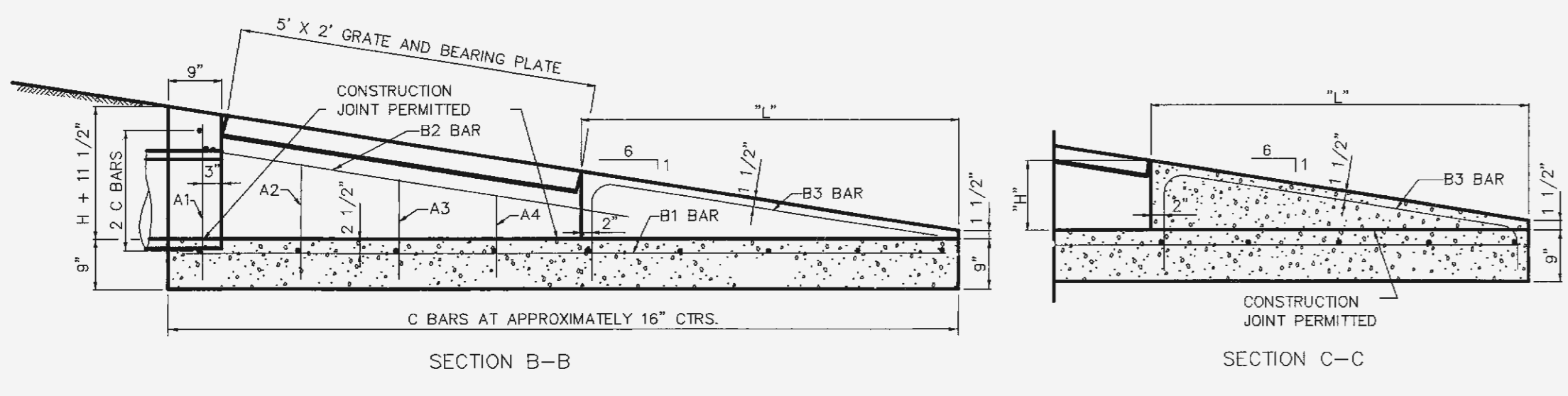
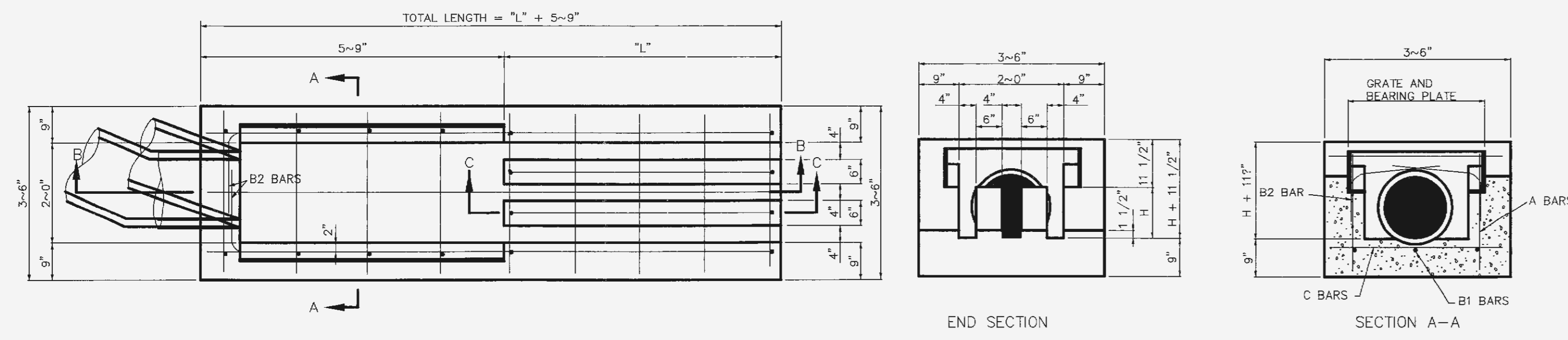
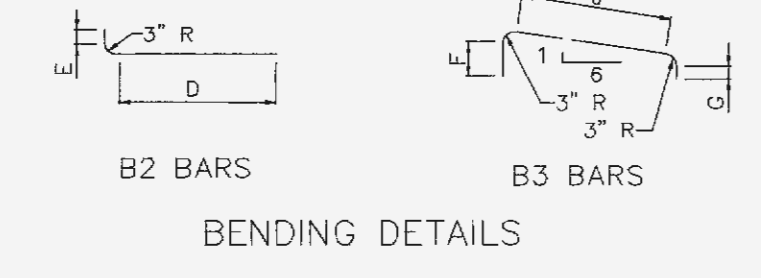


REVISIONS:
 03-19-06 Per City Comments
 10-02-06 Per MODOT
 10-02-06 Per Duckett Creek
 10-12-06 Per Client
 10-17-06 Per Duckett Creek
 11-08-06 Per Cottleville Fire

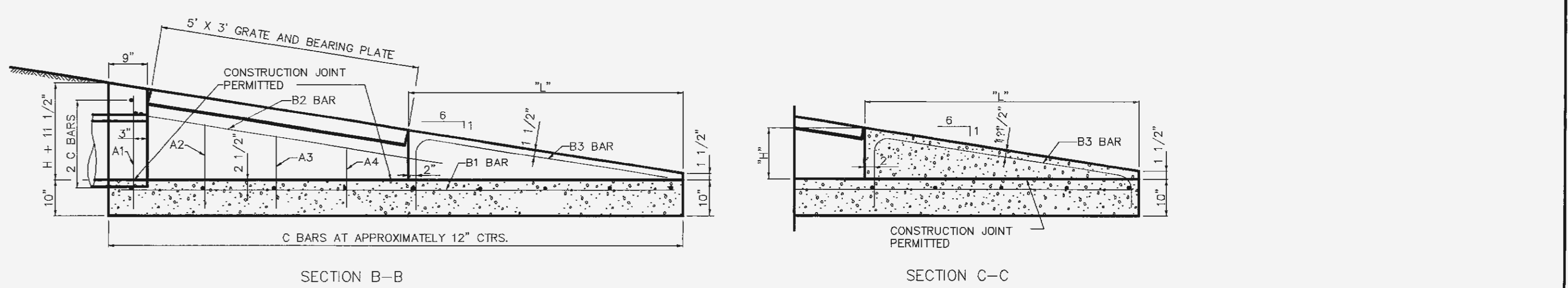
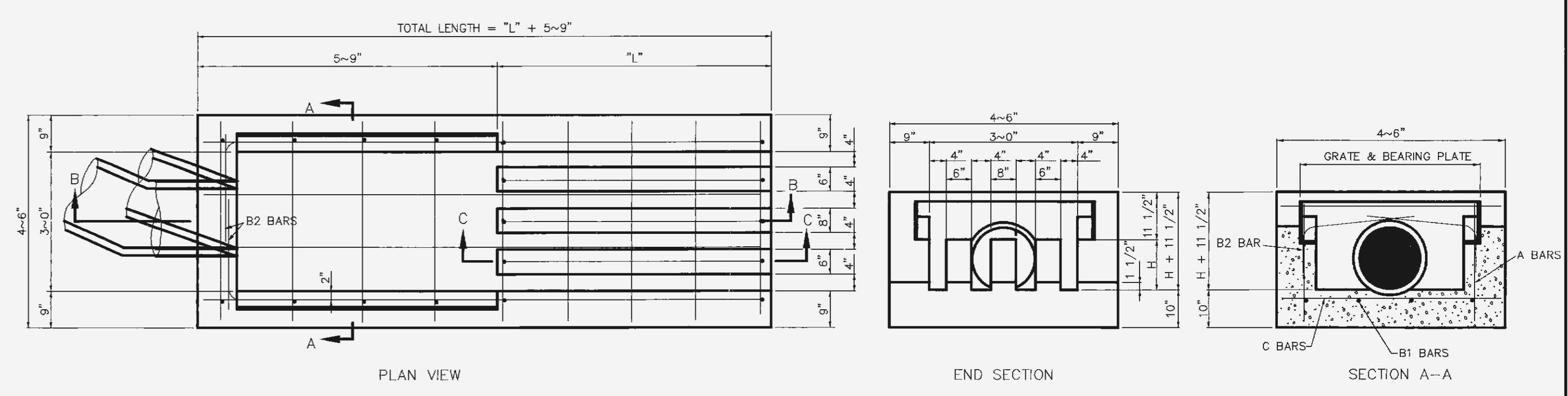


GENERAL NOTES:
 USE RIGHT ANGLE HEADWALL FOR ALL INSTALLATIONS. SKEW PIPE BY USING A BEVELLED END OR ELBOW ON PIPE. IN SPECIAL CASES, HEADWALL MAY BE TURNED TO FIT PIPE SKEW AND 1V TO 6H SLOPE WARPED TO FIT HEADWALL.
 ALL CONCRETE SHALL BE CLASS "B".
 THIS DRAWING AND THE CONCRETE QUANTITIES SHOWN ARE BASED ON THE USE OF CONCRETE PIPE. QUANTITIES OF CONCRETE SHOWN WILL BE USED FOR PAYMENT REGARDLESS OF ANY QUANTITY CHANGES NECESSARY DUE TO THE USE OF ANY OTHER TYPE PIPE SPECIFIED OR PERMITTED.
 FLOW LINE OF HEADWALL IS TO BE PLACED HORIZONTALLY.
 PRECAST NOTES:
 THE CONTRACTOR MAY, SUBJECT TO APPROVAL OF THE ENGINEER, FURNISH PRECAST UNITS IN LIEU OF CAST-IN-PLACE. IF A PRECAST UNIT IS FURNISHED, IT SHALL CONFORM IN ALL RESPECTS TO THE REQUIREMENTS FOR CAST-IN-PLACE UNITS INCLUDING DIMENSIONS AND REINFORCEMENT, EXCEPT THAT THE FORMS MAY BE TAPERED TO FACILITATE REMOVAL OF THE UNIT FROM THE FORMS. SHOP DRAWINGS OF THE PRECAST UNIT SHALL BE SUBMITTED FOR APPROVAL PRIOR TO FIRST USE OF THE PRECASTING FORMS.

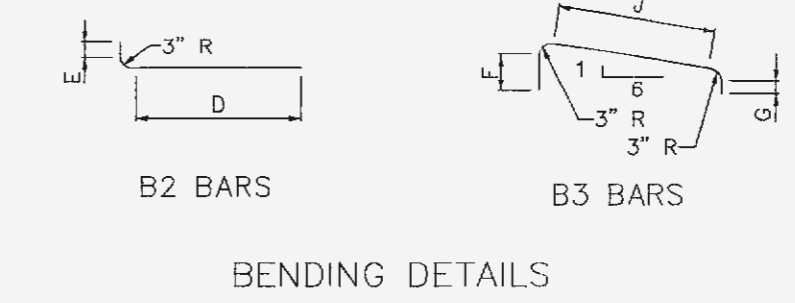
PIPE SIZE	DIMENSIONS		QUANTITIES		REINFORCING																					
	"H"	"L"	CONC. C. Y.	STEEL LBS.	#4 A1 BARS	#4 A2 BARS	#4 A3 BARS	#4 A4 BARS	#4 B1 BARS	#4 B2 BARS	#4 B3 BARS	#4 B3 BARS	#4 B3 BARS	#4 C BARS												
12"	9"	3'-9"	9-6"	1.5	70	2	2-0"	2	1-6"	2	1-3"	2	1-0"	3	9-3"	2	1-5"	5-8"	7-6"	4	11"	5"	2-11"	5-0"	8	3-3"
15"	1'-0"	5-3"	11-0"	1.8	80	2	2-3"	2	1-9"	2	1-6"	2	1-3"	3	10-9"	2	1-5"	5-8"	7-6"	4	1-2"	5"	4-5"	8-9"	9	3-3"
18"	1-3"	6-9"	12-6"	2.2	90	2	2-6"	2	2-0"	2	1-9"	2	1-6"	3	12-3"	2	1-5"	5-8"	7-6"	4	1-5"	5"	5-11"	8-6"	10	3-3"
21"	1-6"	8-3"	14-0"	2.6	100	2	2-9"	2	2-3"	2	2-0"	2	1-9"	3	13-9"	2	1-5"	5-8"	7-6"	4	1-8"	5"	7-5"	10-3"	11	3-3"
24"	1-9"	9-9"	15-6"	3.0	110	2	3-0"	2	2-6"	2	2-3"	2	2-0"	3	15-3"	2	1-5"	5-8"	7-6"	4	1-11"	5"	8-11"	12-0"	12	3-3"



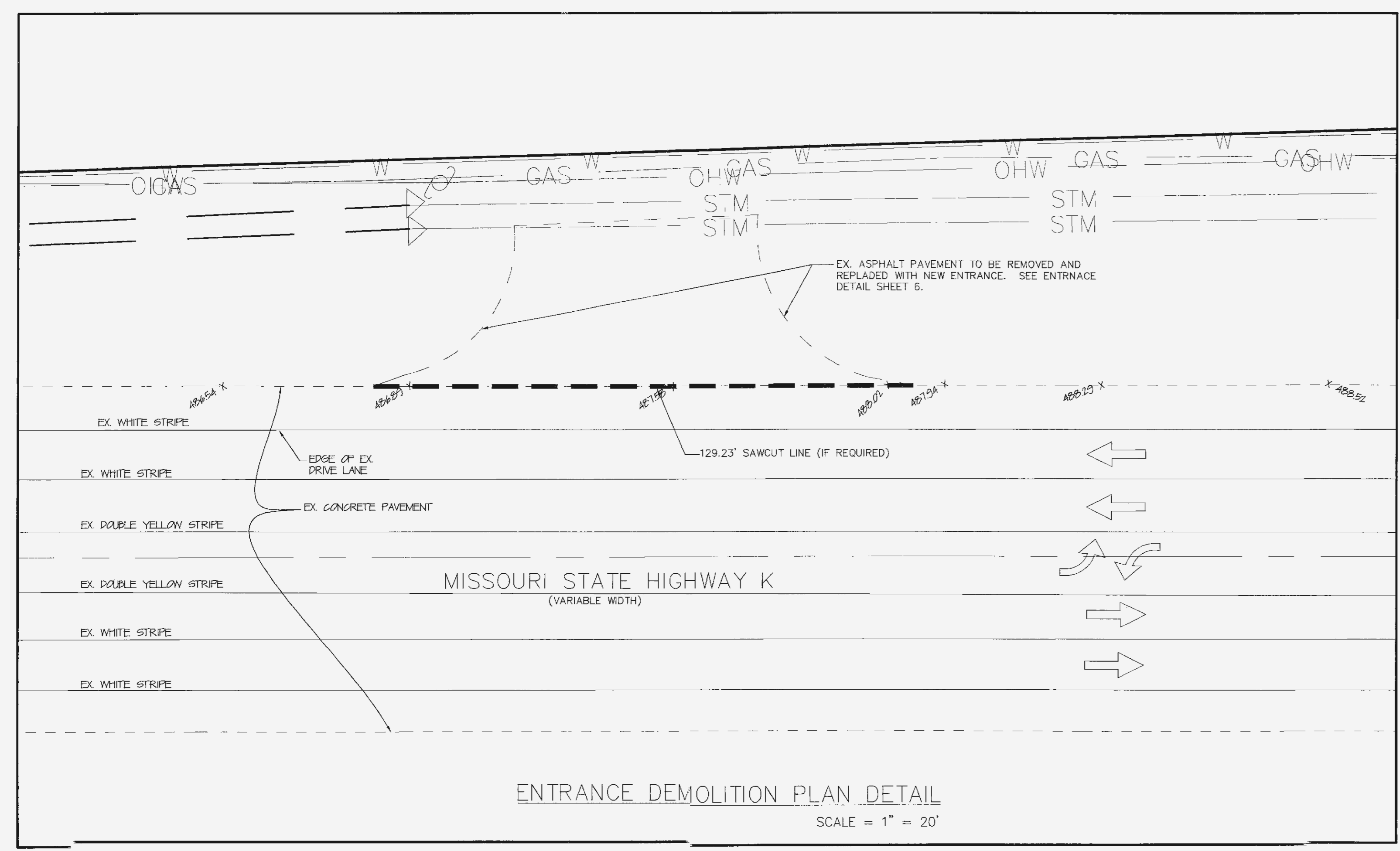
PIPE CULVERT HEADWALLS
 TYPE S
 12" TO 24" DIAMETERS
 - 1V:6H SLOPES
 08-01-2006 604.05D



PIPE SIZE	DIMENSIONS		QUANTITIES		REINFORCING																					
	"H"	"L"	CONC. C. Y.	STEEL LBS.	#4 A1 BARS	#4 A2 BARS	#4 A3 BARS	#4 A4 BARS	#4 B1 BARS	#4 B2 BARS	#4 B3 BARS	#4 B3 BARS	#4 B3 BARS	#4 C BARS												
27"	2'-0"	11-3"	17-0"	4.5	160	2	3-3"	2	2-9"	2	2-6"	2	2-3"	4	16-9"	2	1-11"	5-8"	8-0"	5	2-2"	5"	10-5"	13-9"	18	4-3"
30"	2-3"	12-9"	18-6"	5.0	170	2	3-6"	2	3-0"	2	2-9"	2	2-6"	4	18-3"	2	1-11"	5-8"	8-0"	5	2-5"	5"	11-11"	15-6"	19	4-3"
36"	2-9"	15-9"	21-6"	6.1	200	2	4-0"	2	3-6"	2	3-3"	2	3-0"	4	21-3"	2	1-11"	5-8"	8-0"	5	2-11"	5"	14-11"	19-0"	21	4-3"



PIPE CULVERT HEADWALLS
 TYPE S
 27" TO 36" DIAMETERS
 - 1V:6H SLOPES
 08-01-2006 604.05D



ENTRANCE DEMOLITION PLAN DETAIL
 SCALE = 1" = 20'

E:\DWG\A135000PLUS\13706-Lou Fusz\Construction\13706Con.dwg, DETAILS(1), 11/27/2006 11:48:08 AM, Sta. 35 KW