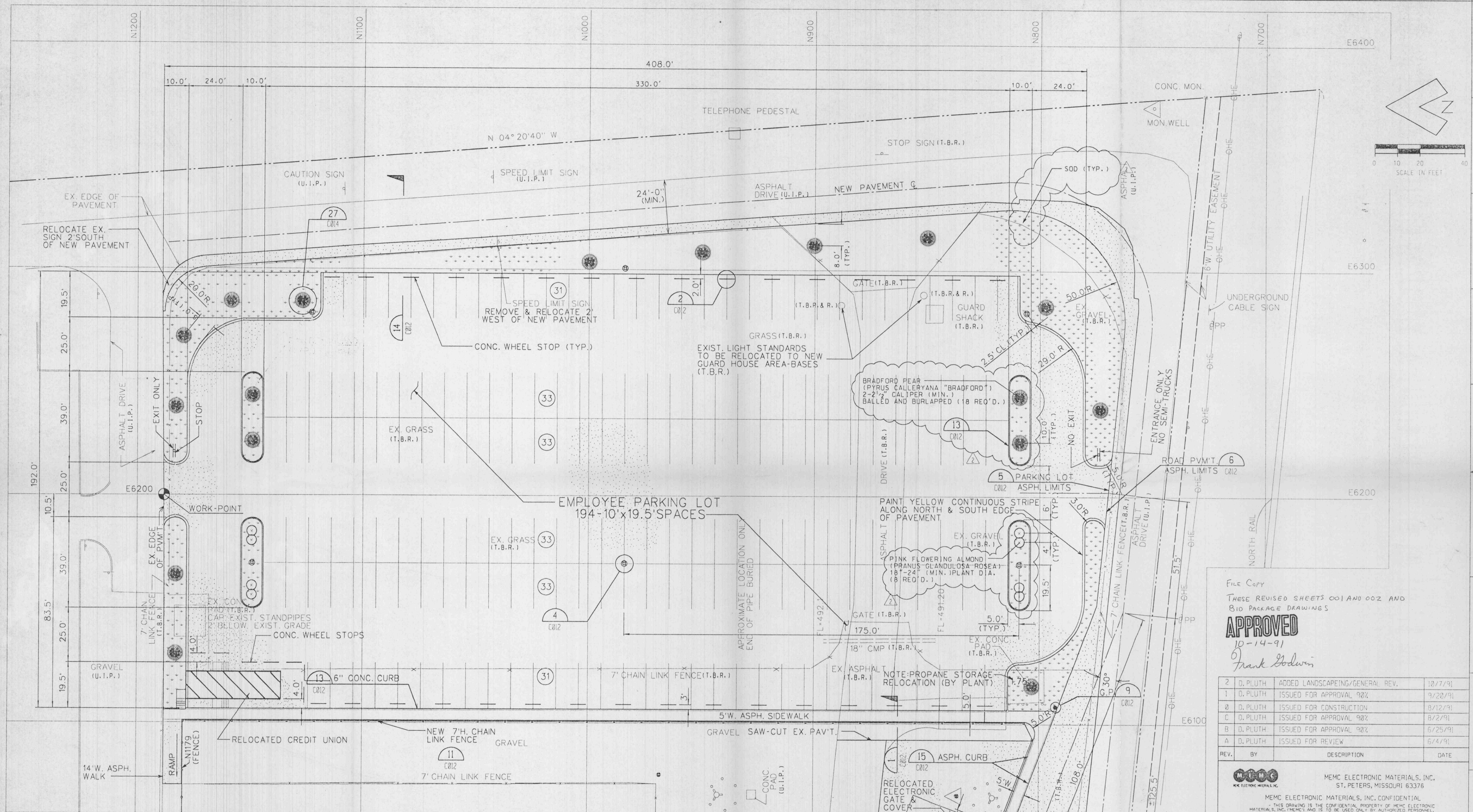


THE DESIGNER HAS CONDUCTED VISUAL SURVEYS AND HAS BEEN ADVISED BY THE LANDOWNER THAT THERE ARE NO UNRECORDED EASEMENTS OR RIGHTS OF WAY AFFECTING THE PROJECT. THE DESIGNER HAS BEEN ADVISED BY THE LANDOWNER THAT THE PROPERTY IS NOT SUBJECT TO ANY EASEMENTS OR RIGHTS OF WAY AFFECTING THE PROJECT. THE DESIGNER HAS BEEN ADVISED BY THE LANDOWNER THAT THE PROPERTY IS NOT SUBJECT TO ANY EASEMENTS OR RIGHTS OF WAY AFFECTING THE PROJECT.



MATCH LINE—SEE DWG. C-003

LEGEND

EXISTING	PROPOSED
STAND PIPE WATER VALVE	CONCRETE
BOLLARD	ASPHALT
FIRE HYDRANT	GRAVEL
WATER VALVE	GUARDPOST
SIGN	P.I.V.
POWER POLE	F.H.
MAN HOLE	GRATE INLET
WATER LINE	M.H.
OVERHEAD ELECTRIC	STORM SEWER
LIGHT STANDARD	SANITARY SEWER
CONCRETE PAD	SPOT ELEV.
FENCE	DOOR
FENCE	FENCE
FENCE	FES
FENCE	SIGN

ABBREVIATIONS

(T.B.R.)	TO BE REMOVED
(T.B.R. & R.)	TO BE REMOVED & RELOCATED
(U.I.P.)	USE-IN-PLACE
(A.T.G.)	ADJUST TO GRADE
F.M.	FORCE MAIN
P.S.	PROCESS SEWER
AC	ACID SEWER
F4	FIRE WATER
PH	POTABLE WATER
HDP	HIGH DENSITY POLYETHYLENE
ATP	ARMED TRUSS PIPE
GI	GRATE INLET
FES	FLARED END SECTION

- GENERAL NOTES:**
- CONTRACTOR SHALL COORDINATE WITH OWNER TO PROVIDE SECURITY FENCING AND THOROUGHFARE AT ALL TIMES FOR TRUCKS, FORKLIFTS AND EMPLOYEE TRAFFIC DURING CONSTRUCTION.
 - SEE ELECTRICAL DWG'S FOR UNDERGROUND ELECTRIC AND GATE OPERATOR CONTROLS.
 - ALL DIM. SHOWN ARE TO EDGE OF PAVEMENT ARE FACE OF FOUNDATION.
 - ALL HAUL OFF MATERIAL SHALL BE HAULED TO A LANDFILL APPROVED BY MEMC. NO MATERIAL IS TO BE SOLD OR GIVEN TO OTHERS—SEE SPECS SECTION 02200.
 - ALL SIGNS REMOVED SHALL BE GIVEN TO MEMC FOR STORAGE & ALL NEW SIGNAGE—SHAPE, SIZE, LETTERING & LOCATION TO BE APPROVED PRIOR TO FABRICATION & PLACEMENT.
 - PER THE CITY OF O'FALLON REQUIREMENTS 3 ADDITIONAL HANDICAP PARKING SPACES WILL BE ADDED (BY MEMC) TO THE MAIN NORTHEAST PARKING AREAS NEAR BUILDING ENTRY POINTS.
 - PRIOR TO PLACEMENT OF THE PAVING CONTRACTOR SHALL PROVIDE TEMPORARY DRAINAGE TO INLETS BY SLOPING SUBGRADE TO TEMPORARY OPENINGS LEFT IN THE SIDES OF THE DRAINAGE STRUCTURES.
 - PROVIDE 6" MIN. NEW TOPSOIL WHICH IS FERTILE, FRIABLE, NATURAL LOAM, SURFACE SOIL, REASONABLY FREE OF SUBSOIL, CLAY LUMPS, BRUSH, WEEDS, OTHER LITTER, AND FREE OF STONES LARGER THAN 1/2".
 - PROVIDE STRONGLY ROOTED SOD, NOT LESS THAN 2 YEARS OLD, FREE OF WEEDS AND UNDESIRABLE NATIVE GRASSES AND MACHINERY CUT TO PAD THICKNESS OF 2". PROVIDE ONLY SOD CAPABLE OF VIGOROUS GROWTH AND DEVELOPMENT WHEN PLANTED (VIABLE, NOT DORMANT).
 - PROVIDE SOD COMPOSED PRINCIPALLY OF KENTUCKY BLUEGRASS (POA PRATENSIS).
 - LAY SOD WITH TIGHTLY FITTED JOINTS, BUTT ENDS AND SIDES OF SOD STRIPES DO NOT OVERLAP. STAGGER STRIPES TO OFFSET JOINTS IN ADJACENT COURSES. WORK FROM BOARDS TO AVOID DAMAGE TO SUBGRADE OR SOD. TAMP OR ROLL LIGHTLY TO ENSURE CONTACT WITH SUBGRADE. ANCHOR SOD ON SLOPES WITH WOOD PEGS TO PREVENT SLIPPAGE.
 - WATER SOD THOROUGHLY WITH A FINE SPRAY IMMEDIATELY AFTER PLANTING.

REF. DWGS.

P-100 #3 REV.3	3380-801-REV.1	3380-806-REV.3	3380-818-REV.1
3380-401-REV.2	3380-803-REV.1	3380-808-REV.2	3380-819-REV.1
3380-402-REV.2	3380-804-REV.3	3380-816-REV.1	3380-820-REV.1

DESIGNER: D.E. PLUTH
 DRAFTER: D. FISHER
 CHECKER: D.P./D.F.
 PROJECT NO.: 201012-01

ST. LOUIS COUNTY, BALLWIN, MISSOURI
 FRU-CON ENGINEERING, INC.

FILE COPY
 THESE REVISED SHEETS 001 AND 002 AND BID PACKAGE DRAWINGS
APPROVED
 10-14-91
 Frank Godwin

REV.	BY	DESCRIPTION	DATE
2	D. PLUTH	ADDED LANDSCAPING/GENERAL REV.	10/27/91
1	D. PLUTH	ISSUED FOR APPROVAL 90%	9/28/91
0	D. PLUTH	ISSUED FOR CONSTRUCTION	8/12/91
C	D. PLUTH	ISSUED FOR APPROVAL 90%	8/2/91
B	D. PLUTH	ISSUED FOR APPROVAL 90%	6/25/91
A	D. PLUTH	ISSUED FOR REVIEW	6/4/91

MEMC ELECTRONIC MATERIALS, INC.
 ST. PETERS, MISSOURI 63376
 MEMC ELECTRONIC MATERIALS, INC. CONFIDENTIAL
 THIS DRAWING IS THE CONFIDENTIAL PROPERTY OF MEMC ELECTRONIC MATERIALS, INC. (MEMC) AND IS TO BE USED ONLY BY AUTHORIZED PERSONNEL AND IN THE INTEREST OF MEMC IT MUST BE ACCURATELY REPRODUCED. IT SHALL NOT BE REPRODUCED IN WHOLE OR IN PART WITHOUT PRIOR WRITTEN PERMISSION FROM MEMC. IT MUST BE RETURNED TO MEMC AT ANY TIME UPON REQUEST BUT IN ANY EVENT AT COMPLETION OF THE WORK OR JOB. THE RECIPIENT AGREES TO KEEP CONFIDENTIAL AND TO REQUIRE HIS/HER EMPLOYEES TO KEEP CONFIDENTIAL THE INFORMATION CONTAINED HEREIN. DISCLOSURE OF THE INFORMATION HEREIN SHALL BE MADE ONLY TO THOSE PERSONS WHO REQUIRE SUCH INFORMATION FOR THEIR WORK ON MEMC'S PROJECTS.

PARKING LOT GEOMETRY PLAN BLDG. 65 EXPANSION

DRAWN BY	DATE	SCALE	DATE
		1"=20.0'	

PROJECT NO.	PLANT	SIZE	ZONE	TYPE	NUMBER	REV.
9123	16	D	65.015	C	001	2