

CIVIL SITE PLAN KEYED NOTES

- 1 LIMITS OF DEMOLITION.
- 2 SAWCUT EXISTING ASPHALTIC CONCRETE PAVEMENT (FULL-DEPTH).
- 3 EXISTING ASPHALTIC CONCRETE PAVEMENT TO BE REMOVED.
- 4 TRENCH AND BACKFILL WITH COMPACTED GRANULAR FILL. REFER TO DETAIL 1 ON DWG. C-311.
- 5 CONCRETE THRUST BLOCK (TYPICAL). REFER TO DETAIL 4 ON DWG. C-311.
- 6 NEW FIRE WATER MAIN - 10" DIAMETER DUCTILE IRON PIPE (DIP) WITH CATHODIC PROTECTION. REFER TO CIVIL CONSTRUCTION NOTES ON DWG. C-012. COORDINATE CATHODIC PROTECTION WITH MEMC REPRESENTATIVE. PROVIDE 48" MINIMUM COVER.
- 7 TEE NEW FIRE WATER MAIN TO EXISTING FIRE WATER MAIN.
- 8 NEW 10" VALVE AND ROAD BOX. BOX TOP TO BE FLUSH WITH PAVEMENT, PAINTED BLUE AND TAGGED WITH VALVE I.D. COORDINATE WITH MEMC REPRESENTATIVE. REFER TO CIVIL CONSTRUCTION NOTES ON DWG. C-012 FOR VALVE INFORMATION.
- 9 EXISTING CHAIN-LINK FENCE TO BE REMOVED AND REINSTALLED (AS REQUIRED). COORDINATE WITH MEMC REPRESENTATIVE.
- 10 NEW 8" ASPHALTIC CONCRETE PAVEMENT (2" LEVELING COURSE ON 6" BASE COURSE) ON 8" AGGREGATE BASE. REFER TO DETAIL 3 ON DWG. C-311. PAINTED STRIPING TO MATCH EXISTING ADJACENT PAVEMENT.
- 11 FIELD VERIFY LOCATION OF EXISTING POTABLE WATER MAIN AND EXISTING THRUST BLOCKS PRIOR TO CONSTRUCTION.

97025	0	E DAVIS	ISSUED FOR CONSTRUCTION	05/12/97
207010-01				

NOTE: THIS SEAL APPLIES ONLY TO THIS DOCUMENT. I DISCLAIM ANY RESPONSIBILITY FOR ALL OTHER DOCUMENTS OR INSTRUMENTS RELATING TO OR INTENDED TO BE USED FOR ANY PART OR PARTS OF THIS PROJECT OR ANY OTHER PROJECT.

STATE OF MISSOURI
LEON W. SCHNUR
 NUMBER E-17777
 REGISTERED PROFESSIONAL ENGINEER

FRU-CON
 PROJECT NO. 207010-01
 FRU-CON ENGINEERING, INC.

15933 CLAYTON ROAD
 ST. LOUIS COUNTY
 BALLWIN, MISSOURI
 63011
 PHONE: (314) 391-6700
 FAX: (314) 391-4513

MEMC
 MEMC ELECTRONIC MATERIALS, INC.
 O'FALLON, MISSOURI 63366

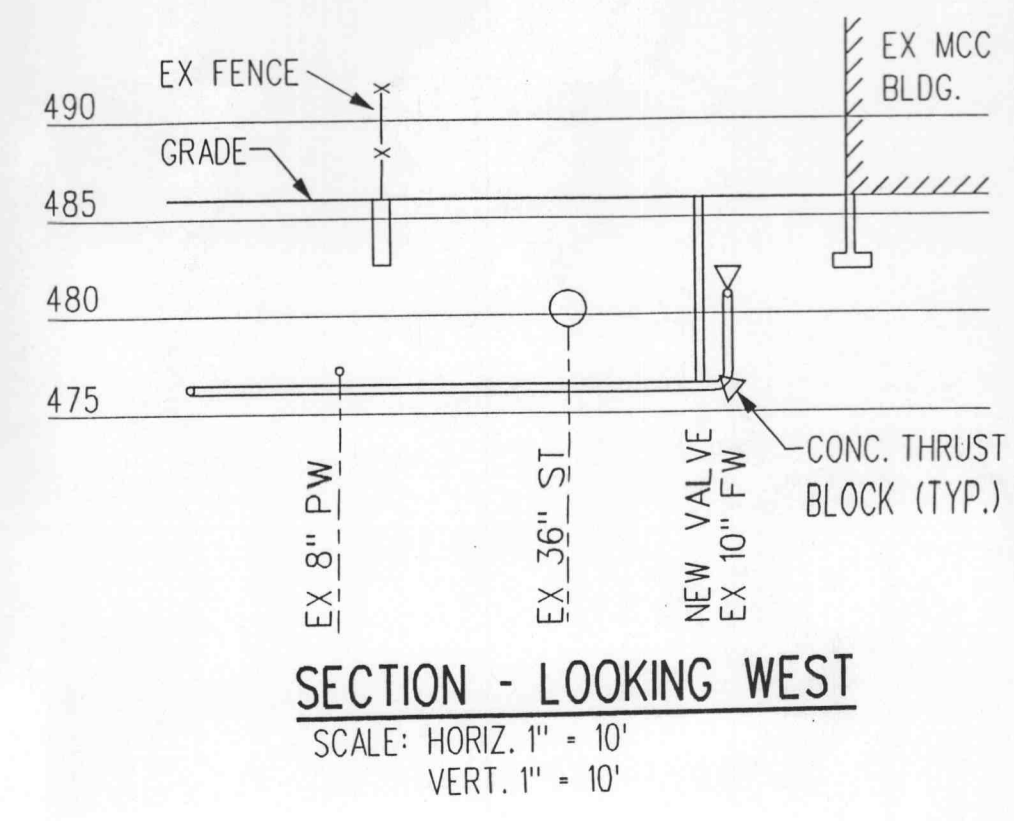
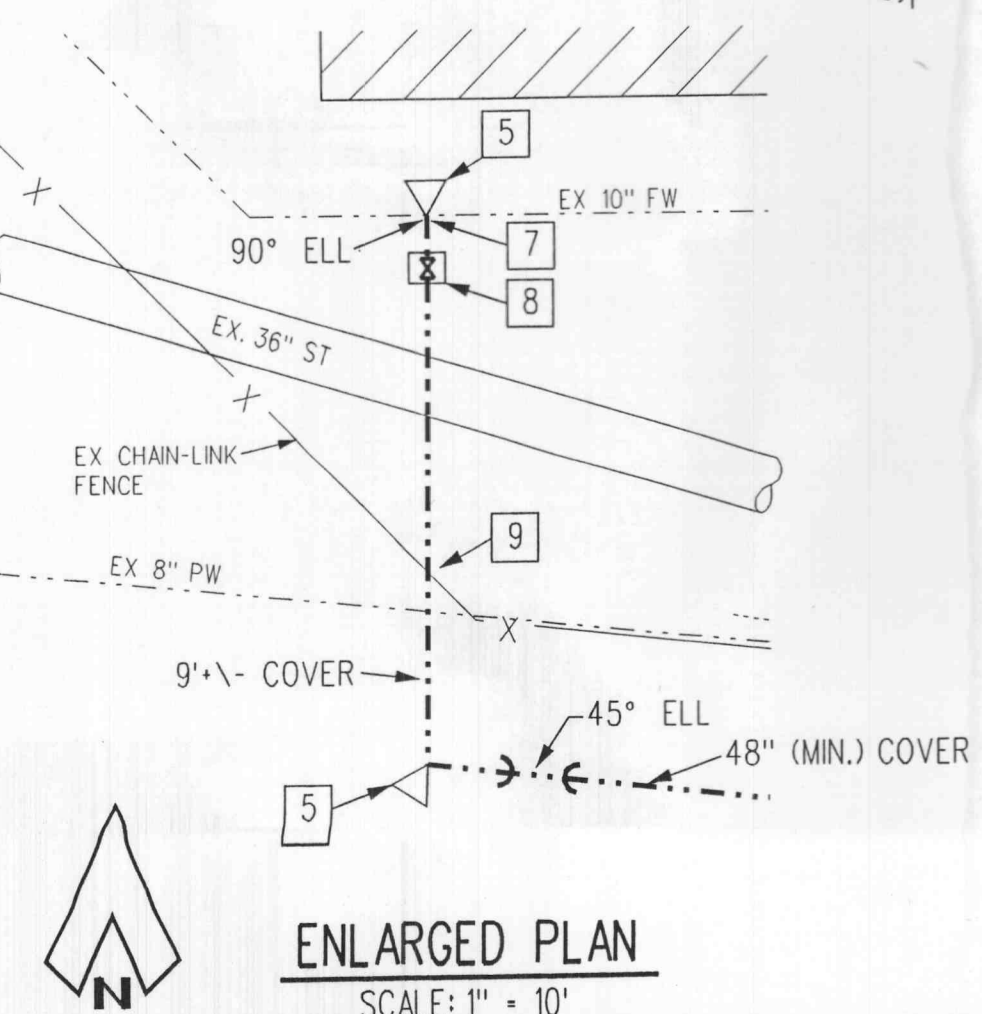
MEMC ELECTRONIC MATERIALS, INC. IS CONFIDENTIAL

THIS DRAWING IS THE CONFIDENTIAL PROPERTY OF MEMC ELECTRONIC MATERIALS, INC. (MEMC) AND IS TO BE USED ONLY BY AUTHORIZED PERSONNEL. AND IN THE INTEREST OF MEMC IT MUST BE ACCOUNTED FOR. IT SHALL NOT BE REPRODUCED IN WHOLE OR IN PART WITHOUT PRIOR WRITTEN PERMISSION FROM MEMC. IT MUST BE RETURNED TO MEMC AT ANY TIME UPON REQUEST BUT IN ANY EVENT COMPLETION OF THE WORK OR JOB. THE RECIPIENT AGREES TO KEEP CONFIDENTIAL AND TO REQUIRE HIS (ITS) EMPLOYEES TO KEEP CONFIDENTIAL THE INFORMATION CONTAINED HEREON. DISCLOSURE OF THE INFORMATION HEREON SHALL BE MADE ONLY TO THOSE PERSONS WHO REQUIRE SUCH INFORMATION FOR THEIR WORK ON MEMC'S PROJECTS.

**CIVIL SITE PLAN
 FIRE WATER LINE EXTENSION
 E 5280-E 5500 N 830-N 880**

DRAWN BY	E. DAVIS	DATE	05/12/97	SCALE		PLOT DATE	
CHECKED BY		DATE	5/27/97	AS NOTED		05/09/97	
PROJECT NO.	97025	PLANT	16	SIZE	D 000.003	ZONE	C
		TYPE		NUMBER	112	REV.	0

NOTE:
 UNDERGROUND FACILITIES, STRUCTURES AND UTILITIES HAVE BEEN PLOTTED FROM AVAILABLE SURVEYS AND RECORDS, AND THEREFORE THEIR LOCATIONS MUST BE CONSIDERED APPROXIMATE ONLY. THERE MAY BE OTHERS, THE EXISTENCE OF WHICH IS PRESENTLY NOT KNOWN.



g:\zone_0833\civil\firewatr\083cp112.dgn
 [1-16, 18-59, 64]
 09-MAY-1997 13:13
 ec dav