

**Table 60-9 Mulching Materials**

Material	Rate	Requirements	Installation/Uses
Straw	1.5-2.5 tons/ac (3-4 tons, if roller punched)	Dry, unchopped, unweathered, free of weed seeds & rot.	Spread by machine 1.5-2.5 inches deep; must be tacked or tied down.
Compost Blanket	1" thick	Double the application rate for embankments	Follow manufacturer's application method.
Wood fiber, wood cellulose, paper	1-2 tons/ac	Double the application rate in critical areas	Use with power mulcher or hydroseeder; may be used to tack straw on steep slopes. Cannot be used in hot dry weather.

**DEVELOPER/OWNER:**  
40 DD SPORTS, LLC  
1 ASPEN CIRCLE DRIVE  
MINNEBROOK, MO 63390  
636-369-0621

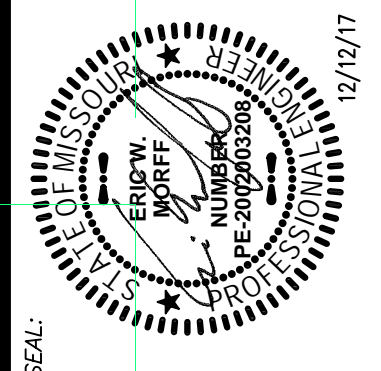
**PROFESSIONAL ENGINEER:**  
ERIC HOFF, P.E.  
1515 S. HIGHWAY 100  
ST. LOUIS, MO 63103  
314.984.9887  
www.colest.com

**DATE:** 09/07/17

**NO.:** 16-0042-A

**REVISION DESCRIPTION:**

NO.	DATE	REVISION DESCRIPTION
1	11/16/17	CITY COMMENTS
2	12/06/17	DCSD COMMENTS
3	12/12/17	CITY COMMENTS



**MISSOURI RUSH SOCCER COMPLEX CLUBHOUSE ADDITION**

901 CALEDONIA DRIVE  
OFALLON, MO 63366

**EROSION CONTROL DETAILS**

**ST. LOUIS**  
1515 S. High Street  
St. Louis, MO 63103  
314.984.9887 tel  
www.colest.com

**COLE**

CIVIL ENGINEERING / SURVEYING / PLANNING / LANDSCAPE ARCHITECTURE

DESIGN/CALC BY: BSJ

DRAWN BY: BSJ

CHECKED BY: EWM

DRAWING SCALE: AS SHOWN

DATE: 09/07/17

Job Number: 16-0042-A

Sheet Number: C8.2