

LANDSCAPE NOTES:


- LANDSCAPE CONTRACTOR TO VERIFY LOCATION OF UNDERGROUND UTILITIES BEFORE BEGINNING WORK.
- ALL LANDSCAPE SHALL COMPLY WITH THE CURRENT EDITION OF ANSI Z 60.1 "AMERICAN STANDARD FOR NURSERY STOCK."
- ALL PLANTS SHALL MEET THE REQUIREMENTS OF THE STATE AND FEDERAL LAW WITH RESPECT TO DISEASE AND INSECT INFESTATION.
- MULCH AREAS WITH TRIPLE GROUND HARDWOOD MULCH 3" MIN. DEPTH.
- ALL LANDSCAPE SUBSTITUTIONS MUST BE APPROVED BY THE OWNER'S REPRESENTATIVE/LANDSCAPE ARCHITECT.
- FORMAL LINES AND GROUPINGS OF A SPECIES OF TREE, SHRUB, OR GROUNDCOVER SHALL BE MATCHED FOR SIZE, FORM, AND COLOR.
- ALL BACKFILL IN PLANTING BEDS AND TREE PITS SHALL BE BACKFILLED WITH PLANTING SOIL.
- ALL TREES OUTSIDE OF PLANT BEDS SHALL BE PLANTED WITH A MULCH RING. OBTAIN APPROVAL FROM OWNER'S REPRESENTATIVE/LANDSCAPE ARCHITECT FOR ANY TREES THAT WILL NOT BE MULCHED FOR EXCESSIVE MOISTURE REASONS.
- ALL LANDSCAPING SHALL BE INSTALLED AS SHOWN ON THE APPROVED PLAN.
- AT PLANTING, TREE TRUNKS MUST BE STRAIGHT WITH MINIMAL BODGES.
- WIRE BASKETS, BURLAP WRAPPINGS, ROPE, TWINE OR ANY SIMILAR SHIPPING MATERIALS SHALL BE REMOVED BEFORE PLANTING.
- A SPADE CUT EDGE SHALL BE CREATED AT ALL LOCATIONS WHERE PLANTING BEDS ARE ADJACENT TO GRASS AREAS UNLESS OTHERWISE NOTED.
- A METAL EDGE SHALL BE USED WHERE DECORATIVE GRAVEL IS ADJACENT TO SOD AREAS AND PLANT BEDS.
- SEE CIVIL PLANS FOR TYPE AND LOCATION OF EROSION CONTROL MATERIALS.
- DO NOT DISTURB EXISTING UTILITIES WITHIN WORK AREA. SILT FENCE AND PLANTINGS SHALL AVOID ANY EXISTING UTILITIES.
- THE CONTRACTOR SHALL FOLLOW THE LANDSCAPE PLANS. ANY SUBSTITUTION OR ALTERATION SHALL NOT BE ALLOWED WITHOUT APPROVAL OF THE OWNER'S REPRESENTATIVE/LANDSCAPE ARCHITECT. OVERALL PLANT QUANTITY AND QUALITY SHALL BE CONSISTENT WITH THE PLANS.
- THE CONTRACTOR IS RESPONSIBLE FOR VERIFYING ALL PLANT QUANTITIES. WRITTEN QUANTITIES TAKES PRECEDENCE OVER GRAPHIC QUANTITIES. NOTIFY OWNER'S REPRESENTATIVE/LANDSCAPE ARCHITECT OF DISCREPANCIES.
- THE OWNER'S REPRESENTATIVE/LANDSCAPE ARCHITECT RESERVES THE RIGHT TO INSPECT AND TAG ALL PLANT MATERIAL PRIOR TO SHIPPING TO THE SITE. IN ALL CASES, THE LANDSCAPE ARCHITECT MAY REJECT PLANT MATERIAL AT THE SITE IF MATERIAL IS DAMAGED, DISCAGED, OR DECLINING IN HEALTH AT THE TIME OF ONSITE INSPECTIONS OR IF THE PLANT MATERIAL DOES NOT MEET THE MINIMUM SPECIFIED STANDARD IDENTIFIED ON THE PLANS AND IN THE SPECIFICATIONS. THE CONTRACTOR SHALL COORDINATE THE OWNER'S REPRESENTATIVE/LANDSCAPE ARCHITECT FOR INSPECTION AND APPROVAL OF ALL MATERIALS AND PRODUCTS PRIOR TO INSTALLATION.
- THE OWNER'S REPRESENTATIVE/LANDSCAPE ARCHITECT MAY ELECT TO UPSIZE PLANT MATERIAL AT THEIR DISCRETION BASED ON SELECTION, AVAILABILITY, OR TO ENHANCE SPECIFIC AREAS OF THE PROJECT. THE CONTRACTOR SHALL VERIFY PLANT MATERIAL SIZES WITH OWNER'S REPRESENTATIVE/LANDSCAPE ARCHITECT PRIOR TO PURCHASING, SHIPPING OR STOCKING OF PLANT MATERIALS. SUBMIT CHANGE ORDER REQUEST TO OWNER'S REPRESENTATIVE/LANDSCAPE ARCHITECT FOR APPROVAL IF ADDITIONAL COST IS REQUESTED BY THE CONTRACTOR PRIOR TO INSTALLATION. RE-STOCKING CHARGES WILL NOT BE APPROVED IF THE CONTRACTOR FAILS TO SUBMIT A REQUEST FOR MATERIAL CHANGES.
- THE CONTRACTOR SHALL WARRANTY ALL CONTRACTED WORK AND MATERIALS FOR A PERIOD OF ONE YEAR AFTER SUBSTANTIAL COMPLETION HAS BEEN ISSUED BY THE OWNER'S REPRESENTATIVE/LANDSCAPE ARCHITECT FOR THE ENTIRE PROJECT UNLESS OTHERWISE SPECIFIED IN THE CONTRACT DOCUMENTS OR SPECIFICATIONS.
- THE DEVELOPER, HIS SUCCESSORS AND ASSIGNS SHALL BE RESPONSIBLE FOR THE INSTALLATION, MAINTENANCE AND REPLACEMENT OF ALL LANDSCAPING MATERIALS SHOWN OR INDICATED ON THE APPROVED LANDSCAPE PLAN ON FILE WITH THE PLANNING DEPARTMENT. ALL LANDSCAPING WILL BE INSTALLED AS DELINEATED ON THE PLAN, PRIOR TO ISSUANCE OF CERTIFICATE OF OCCUPANCY.
- PRIOR TO INSTALLATION OF PLANT MATERIALS, AREAS THAT HAVE BEEN COMPACTED OR DISTURBED BY CONSTRUCTION ACTIVITY SHALL BE THOROUGHLY LOOSENED TO A DEPTH OF 8" - 12" AND AMENDED PER SPECIFICATIONS.
- ALL LANDSCAPED AREAS ARE TO HAVE SOIL PREPARATION PER SPECIFICATIONS. (MINIMUM RATE OF 3 CU. YDS. OF ORGANIC MATTER PER 1000 S.F.). TREES SHALL NOT BE LOCATED IN DRAINAGE SWALES, DRAINAGE AREAS, OR UTILITY EASEMENTS. CONTACT OWNER'S REPRESENTATIVE/LANDSCAPE ARCHITECT FOR RELOCATION OF PLANTS IN QUESTIONABLE AREAS PRIOR TO INSTALLATION.
- ALL EVERGREEN TREES SHALL BE FULLY BRANCHED TO THE GROUND AND SHALL NOT EXHIBIT SIGNS OF ACCELERATED GROWTH AS DETERMINED BY THE OWNER'S REPRESENTATIVE/LANDSCAPE ARCHITECT.
- ALL TREES ARE TO BE STAKED AND GUYED PER DETAILS FOR A PERIOD OF 1 YEAR. THE CONTRACTOR SHALL BE RESPONSIBLE FOR REMOVING STAKES AT THE END OF 1 YEAR FROM ACCEPTANCE OF LANDSCAPE INSTALLATION BY THE OWNER'S REPRESENTATIVE/LANDSCAPE ARCHITECT. OBTAIN APPROVAL BY OWNER'S REPRESENTATIVE PRIOR TO REMOVAL.
- ALL TREES INSTALLED ABOVE RETAINING WALLS UTILIZING GEO-GRID MUST BE HAND CUD TO PROTECT GEO-GRID. IF GEO-GRID MUST BE CUT TO INSTALL TREES, APPROVAL MUST BE GIVEN BY OWNER'S REPRESENTATIVE/LANDSCAPE ARCHITECT PRIOR TO DOING WORK.
- PLACE PLANT MATERIAL IN SHRUB BED SO THAT ONCE PLANTS GROW TO FULL SIZE THEY ARE FULLY CONTAINED WITHIN THE SHRUB BED AREA AND DO NOT HANG OVER THE EDGER LINE.
- REFER TO IRRIGATION PLANS FOR LIMITS AND TYPES OF IRRIGATION DESIGNED FOR THE LANDSCAPE. IN NO CASE SHALL IRRIGATION BE EMITTED WITHIN THE MINIMUM DISTANCE FROM BUILDING OR WALL FOUNDATIONS AS STIPULATED IN THE GEOTECHNICAL REPORT. ALL IRRIGATION DISTRIBUTION LINES, HEADS AND EMITTERS SHALL BE KEPT OUTSIDE THE MINIMUM DISTANCE AWAY FROM ALL BUILDING AND WALL FOUNDATIONS AS STIPULATED IN THE GEOTECHNICAL REPORT.
- LANDSCAPE AREAS SHALL BE IRRIGATED WITH AN AUTOMATIC UNDERGROUND IRRIGATION SYSTEM WITH INDIVIDUAL ZONES FOR TURF AND NON-TURF AREAS, AND MUST INCLUDE A MOISTURE

- DETECTION DEVICE TO PREVENT OPERATION DURING RAINY PERIODS. TURF AREAS SHALL BE IRRIGATED WITH AN AUTOMATIC POP-UP IRRIGATION SYSTEM. SHRUB AND PERENNIAL BEDS SHALL HAVE DRIP IRRIGATION.
- LANDSCAPE MATERIAL LOCATIONS SHALL HAVE PRECEDENCE OVER IRRIGATION MAINLINE AND LATERAL LOCATIONS. COORDINATE INSTALLATION OF IRRIGATION EQUIPMENT SO THAT IT DOES NOT INTERFERE WITH THE PLANTING OF TREES OR OTHER LANDSCAPE MATERIAL.
- THE LANDSCAPE CONTRACTOR SHALL BE RESPONSIBLE FOR ENSURING POSITIVE DRAINAGE EXISTS IN ALL LANDSCAPE AREAS. SURFACE DRAINAGE ON LANDSCAPE AREAS SHALL NOT FLOW TOWARD STRUCTURES AND FOUNDATIONS. MAINTAIN SLOPE AWAY FROM FOUNDATIONS PER THE GEOTECHNICAL REPORT RECOMMENDATIONS. ALL LANDSCAPE AREAS BETWEEN WALKS AND CURBS SHALL DRAIN FREELY TO THE CURB UNLESS OTHERWISE IDENTIFIED ON THE DRAINING PLAN. IN NO CASE SHALL THE GRADE, TURF THATCH, OR OTHER LANDSCAPE MATERIALS DAM WATER AGAINST WALKS. MINIMUM SLOPES ON LANDSCAPE AREAS SHALL BE 2%; MAXIMUM SLOPE SHALL BE 25% UNLESS SPECIFICALLY IDENTIFIED ON THE PLANS OR APPROVED BY THE OWNER'S REPRESENTATIVE/LANDSCAPE ARCHITECT.
- SHRUB, GROUNDCOVER AND PERENNIAL BEDS ARE TO BE CONTAINED BY A SPADE CUT EDGE. EDGER IS NOT REQUIRED WHEN ADJACENT TO CURBS, WALLS, WALKS OR SOLID FENCES WITHIN 3" OF PRE-MULCHED FINAL GRADE. EDGER SHALL NOT BE REQUIRED TO SEPARATE MULCH TYPES UNLESS SPECIFIED ON THE PLANS.
- ALL SHRUB BEDS ARE TO BE MULCHED WITH MIN. 3" DEPTH, SHREDDED HARDWOOD BARK MULCH.
- AT SEED AREA BOUNDARIES ADJACENT TO EXISTING NATIVE AREAS, OVERLAP ADJUTING NATIVE AREAS BY THE FULL WIDTH OF THE SEEDER.
- EXISTING TURF AREAS THAT ARE DISTURBED DURING CONSTRUCTION, ESTABLISHMENT AND THE MAINTENANCE PERIOD SHALL BE RESTORED WITH NEW SOD TO MATCH EXISTING TURF SPECIES. DISTURBED NATIVE AREAS WHICH ARE TO REMAIN SHALL BE OVER SEEDED AND RESTORED WITH SPECIFIED SEED MIX.
- CONTRACTOR SHALL OVER SEED ALL MAINTENANCE OR SERVICE ACCESS BENCHES AND ROADS WITH SPECIFIED SEED MIX UNLESS OTHERWISE NOTED ON THE PLANS.
- ALL SEEDED SLOPES EXCEEDING 25% IN GRADE (4:1) SHALL RECEIVE EROSION CONTROL BLANKETS. PRIOR TO INSTALLATION, NOTIFY OWNER'S REPRESENTATIVE FOR APPROVAL OF LOCATION AND ANY ADDITIONAL COST IF A CHANGE ORDER IS NECESSARY.
- WHEN COMPLETE, ALL GRADES SHALL BE WITHIN +/- 1/8" OF FINISHED GRADES AS SHOWN ON THE PLANS. THESE PLANS ARE NOT INTENDED FOR CONSTRUCTION OR PERMITTING UNLESS STATED IN THE TITLE BLOCK.
- DRAWINGS ARE INTENDED TO BE PRINTED ON 24" X 36" PAPER. PRINTING THESE DRAWINGS AT A DIFFERENT SIZE WILL IMPACT THE SCALE. VERIFY THE GRAPHIC SCALE BEFORE REFERENCING ANY MEASUREMENTS ON THESE SHEETS. THE RECIPIENT OF THESE DRAWINGS SHALL BE RESPONSIBLE FOR ANY ERRORS RESULTING FROM INCORRECT PRINTING, COPYING, OR ANY OTHER CHANGES THAT ALTER THE SCALE OF THE DRAWINGS.
- VERIFY ALL PLANT DIMENSIONS PRIOR TO START OF CONSTRUCTION. NOTIFY THE OWNER'S REPRESENTATIVE TO ADDRESS ANY QUESTIONS OR CLARIFY ANY DISCREPANCIES.
- WRITTEN DIMENSIONS TAKE PRECEDENCE OVER SCALED DIMENSIONS.
- SUBMIT A CHANGE ORDER FOR APPROVAL FOR ANY CHANGES TO WORK SCOPE RESULTING FROM FIELD CONDITIONS OR DIRECTION BY OWNER'S REPRESENTATIVE WHICH REQUIRE ADDITIONAL COST TO THE OWNER PRIOR TO PERFORMANCE OF WORK.
- THE CONTRACTOR SHALL PROVIDE A STAKED LAYOUT OF ALL SITE IMPROVEMENTS FOR INSPECTION BY THE OWNER'S REPRESENTATIVE AND MAKE MODIFICATIONS AS REQUIRED.

PLANT SCHEDULE

CODE	COMMON/BOTANICAL NAME	QTY.	PLANTING SIZE	COND.
SHRUBS				
BG	GREEN VELVET BOXWOOD (BUXUS 'GREEN VELVET')	26	24"-36" MIN.	CONT.
WF	WEIGELA (WEIGELA FLORIDA 'ALEXANDER' WINE & ROSES)	42	24"-36" MIN.	CONT.
JC	CHINESE JUNIPER (JUNIPERUS CHINENSIS 'SPARMINT')	9	4' HT. MIN.	CONT.
TM	'YEW (TAXUS MEDIA 'DENSIFORMIS')	22	24"-36" MIN.	CONT.
GROUND COVER				
LM	LILY TURF (LIRIOPE MUSCARI 'BIG BLUE')	150	1 GAL. MIN.	CONT.

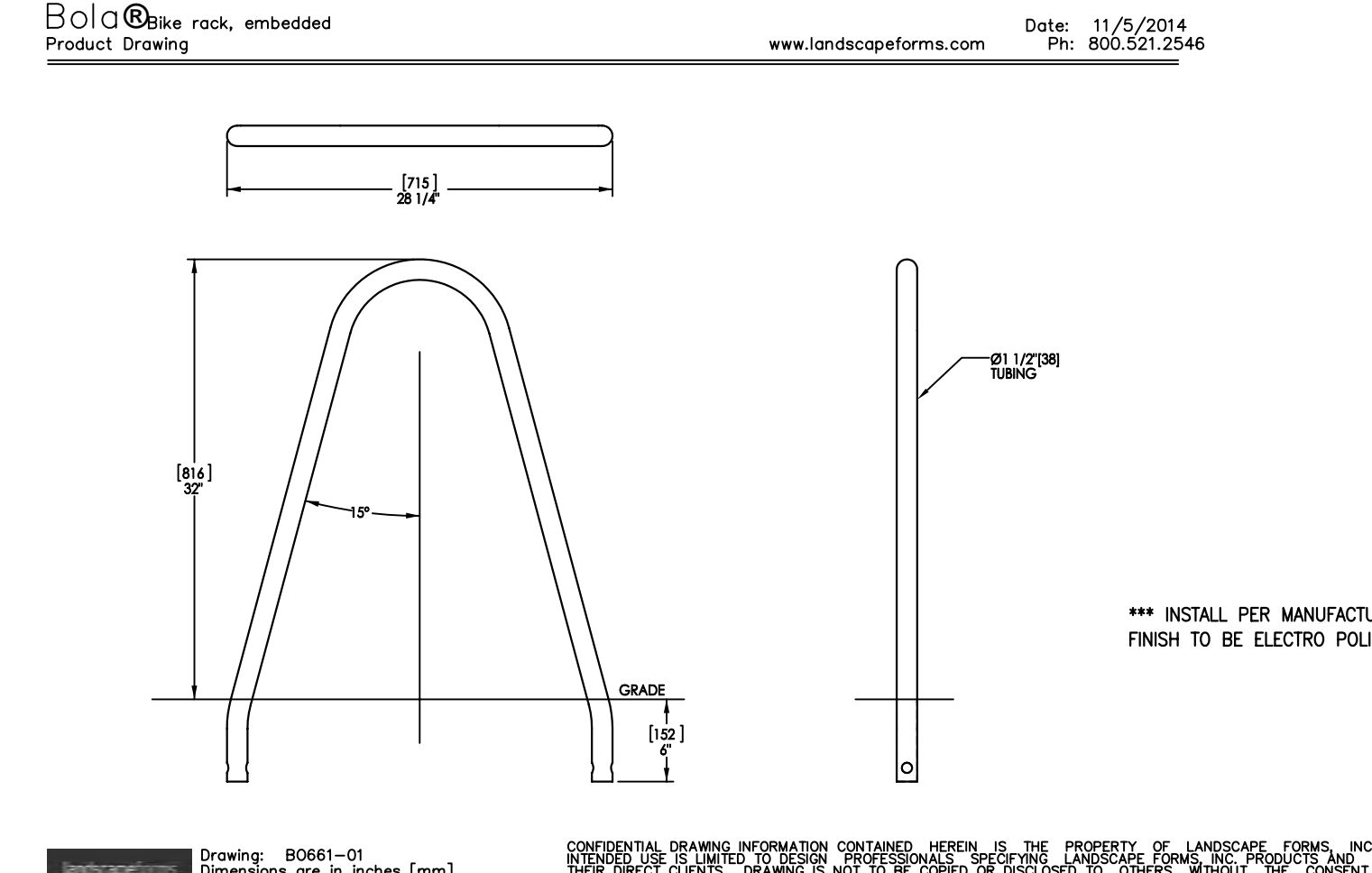
BOLA®
Product Data Sheet



An artful solution for bicycle storage and security that meets Association of Pedestrian and Bicycle Professionals (APBP) recommendations. BOLA's understated design doesn't conflict with other site elements. An artful solution for bicycle storage and security that meets Association of Pedestrian and Bicycle Professionals (APBP) recommendations. BOLA's understated design doesn't conflict with other site elements.

STYLE	DEPTH	WIDTH	HEIGHT	PRODUCT WEIGHT
B08	1.6"	28.25"	32"	19.6

Bike Rack
Capacity: 2 bikes
Bike racks made of 1.5" o.d., 120" wall stainless steel tubing, with a #4 steel electroplated finish on bare stainless steel.
BOLA is also available in powdercoated steel.
BOLA must be embedded.
BOLA secures two bicycles parked parallel to the rack.
The bicycles can be headed in opposite directions, or in the same direction. The rack provides two-point contact to prevent the bicycle from tipping over.
A standard D-shaped bike lock can secure both a wheel and the frame.



Bola® Bike Rack
Installation Guide

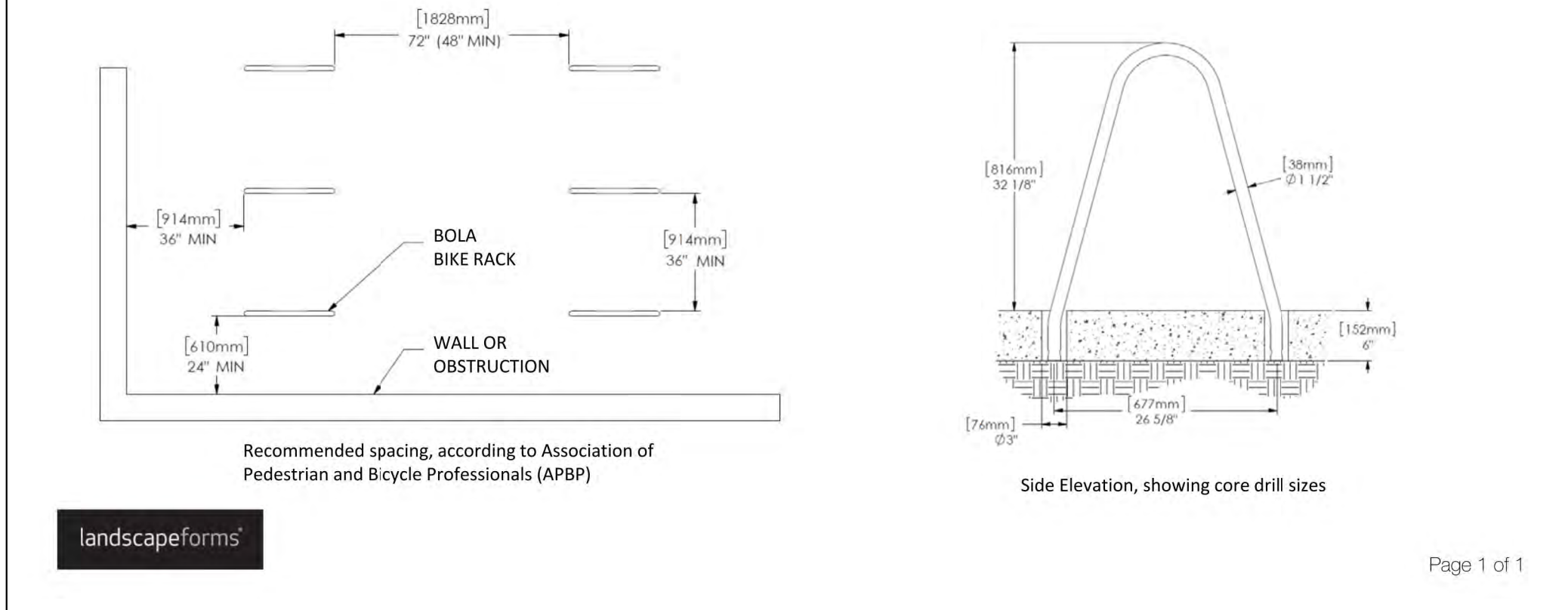
Date: September 8, 2016
www.landscapeforms.com Ph: 800.521.2546

HANDLE WITH CARE! Bola's finish can be scuffed by contact with tools, concrete, or other abrasive surfaces. Protect the finish from damage during installation. Use touch-up paint to repair any powder coat finish abrasions.

INSTALLATION:

- Core drill 3" diameter (minimum) holes 6" deep.
- Prepare the holes for outdoor anchoring cement, such as Kwikset™ or Super Por-rok™. Follow the manufacturer's instructions for blowing out dust, filling with water, scrubbing, and removing excess water.
- Place the bike rack back into position and fill the holes with anchoring cement.
- Wipe away any excess before it cures.

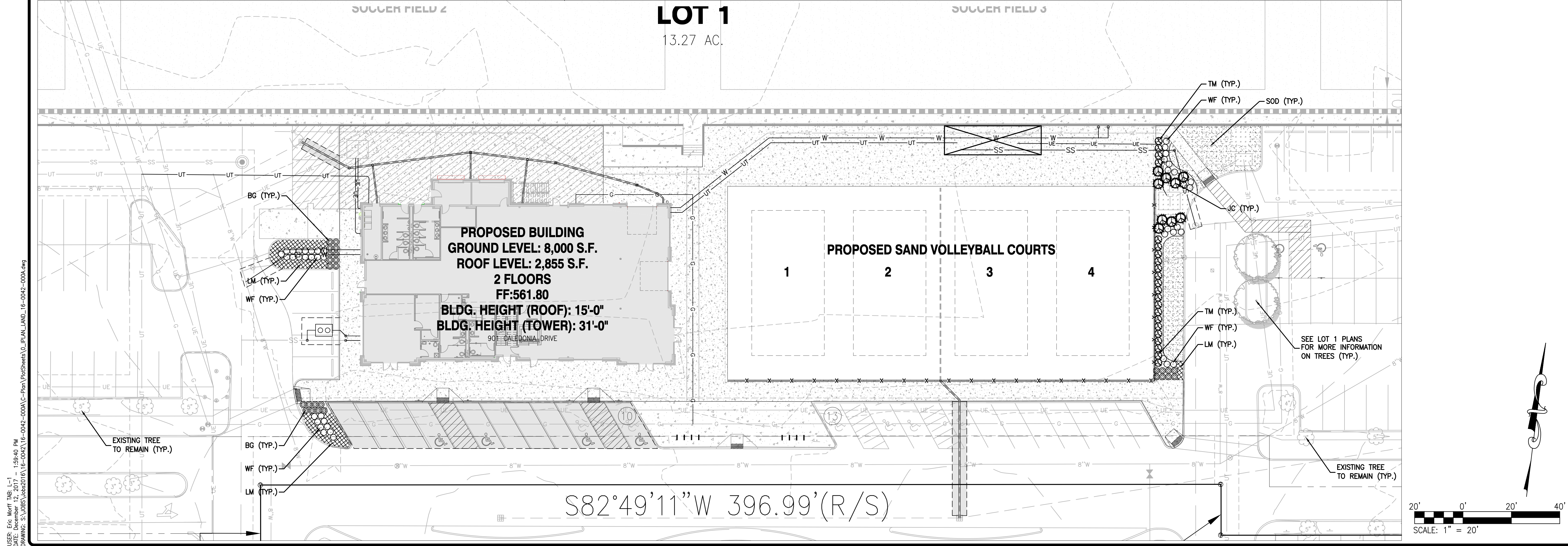
Tools Required
• Unit ships assembled



Recommended spacing, according to Association of Pedestrian and Bicycle Professionals (APBP)

Side Elevation, showing core drill sizes

Page 1 of 1

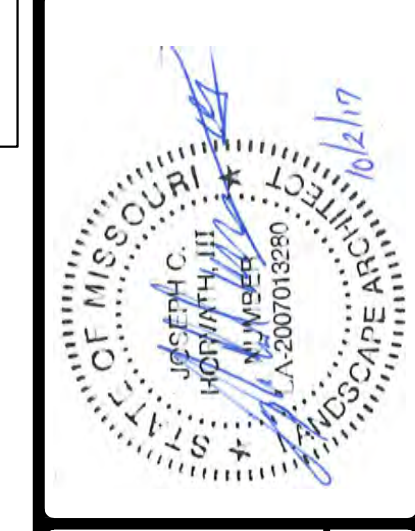


USER: Eric Morrill TAB: L-1
DATE: December 12, 2017 1:58:40 PM
DRAWING: S:\JOBS\16-0042\16-0042-000A\C-Plan\16-0042-000A.dwg

DATE	NO	REVISION DESCRIPTION
6/20/17	1	QTY COMMENTS

DEVELOPER/OWNER:
40 DD SPORTS, LLC
4160 EHLMANN ROAD
ST. PETERS, MO 63376
636-389-0621

THE PROFESSIONAL WHOSE SIGNATURE AND PERSONAL SEAL APPEAR HEREON IS ASSUMING TO DESIGN, SURVEY, PLAN, SPECIFY, PREPARE CONTRACTS AND PERFORM ANY OTHER DUTIES OF AN ARCHITECT OR ENGINEER. THE PROFESSIONAL IS NOT PROVIDING ANY GUARANTEE, WARRANTY, OR OTHER DOCUMENTS OR INSTRUMENTS NOT SPECIFICALLY IDENTIFIED ON THESE PLANS. THE PROFESSIONAL IS NOT PROVIDING ANY GUARANTEE, WARRANTY, OR OTHER DOCUMENTS OR INSTRUMENTS NOT SPECIFICALLY IDENTIFIED ON THESE PLANS. THE PROFESSIONAL IS NOT PROVIDING ANY GUARANTEE, WARRANTY, OR OTHER DOCUMENTS OR INSTRUMENTS NOT SPECIFICALLY IDENTIFIED ON THESE PLANS.



MISSOURI RUSH SOCCER COMPLEX
CALLEDONIA DRIVE
O'FALLON, MO 63366

LANDSCAPE PLAN

COLE
CIVIL ENGINEERING / SURVEYING / PLANNING / LANDSCAPE ARCHITECTURE

DESIGN/CALC BY: JCH/JDR
DRAWN BY: JCH
CHECKED BY: JDR/JCH
DRAWING SCALE: AS SHOWN
DATE: 06/02/17
Job Number: 16-0042-A
Sheet Number: L1.0