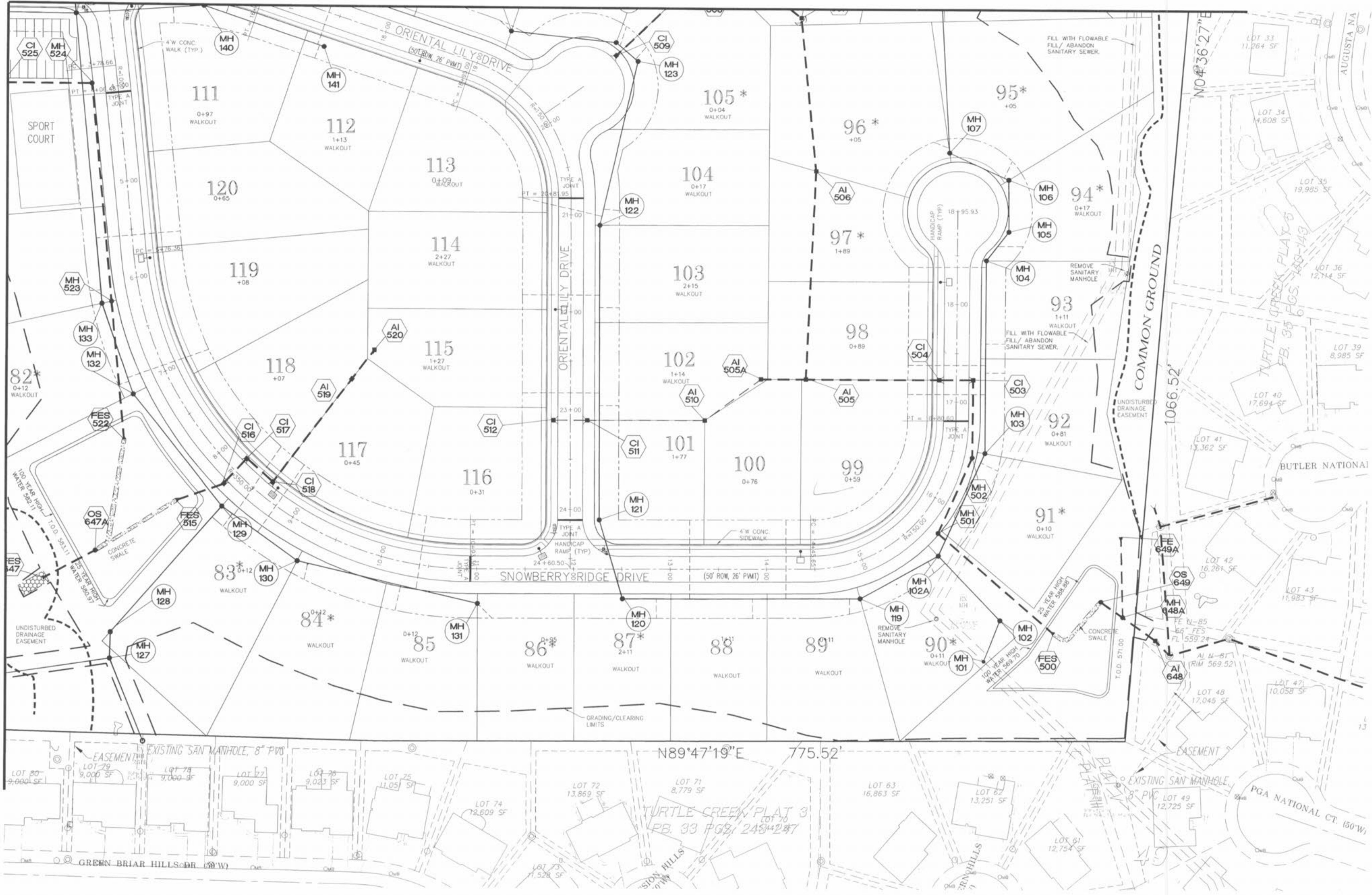


SEE SHEET 4

SEE SHEET 6



04/16/04 REVISED AS PER CITY COMMENTS
 03/20/04 REVISED AS PER CITY COMMENTS
 07/27/04 REVISED AS PER CITY COMMENTS

**MAGNOLIA
 FLAT PLAN**

ST. CHARLES ENGINEERING & SURVEYING, INC.
 801 S. FIFTH STREET, SUITE 202
 ST. CHARLES, MO 63301
 TEL: (636) 947-0607 FAX: (636) 947-2448



ORDER NO. 030498
 DATE 1-26-04
 7

SANITARY SEWER NOTES:
 AFTER NEW SANITARY LINES ARE INSTALLED AND INSPECTED
 EXISTING SANITARY SEWER EASEMENTS SHALL BE VACATED BY
 SEPARATE DOCUMENT. NEW SANITARY SEWER EASEMENTS FOR
 REMAINING LINES WILL BE ESTABLISHED ON THE RECORD PLAN.

