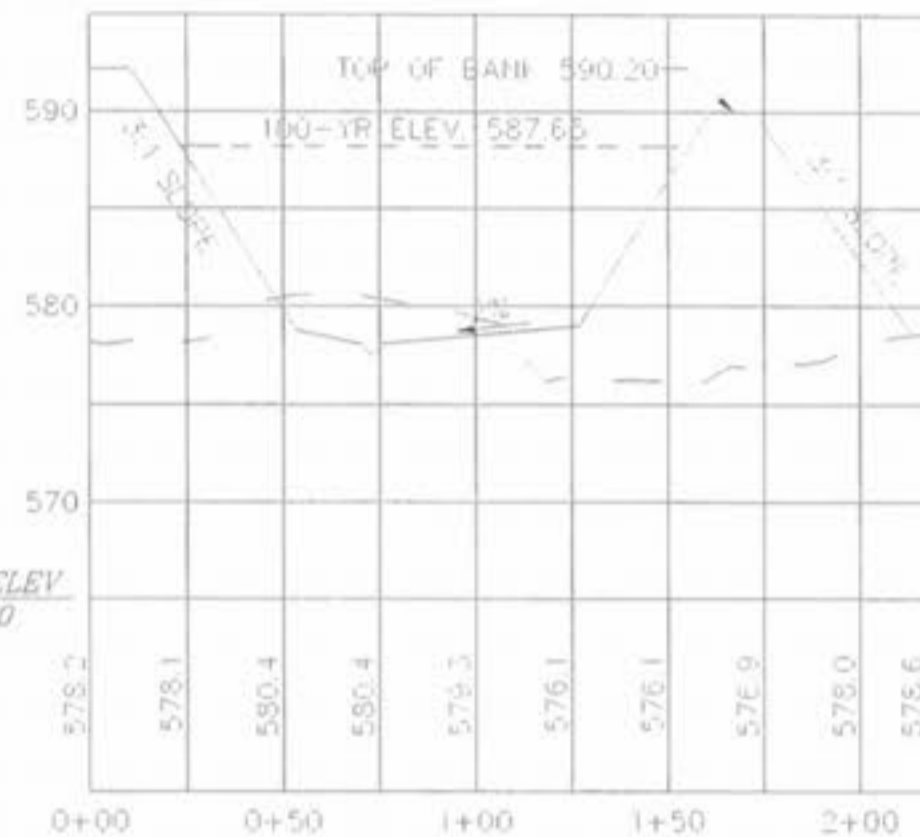
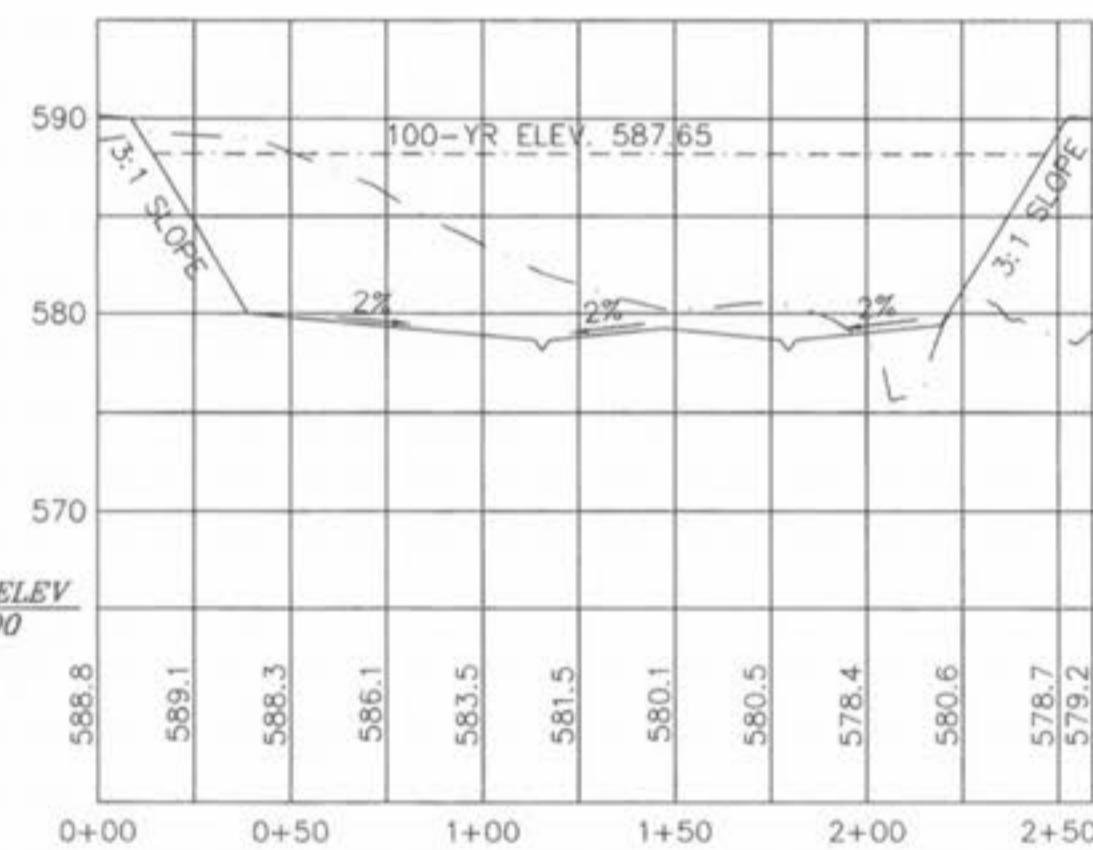


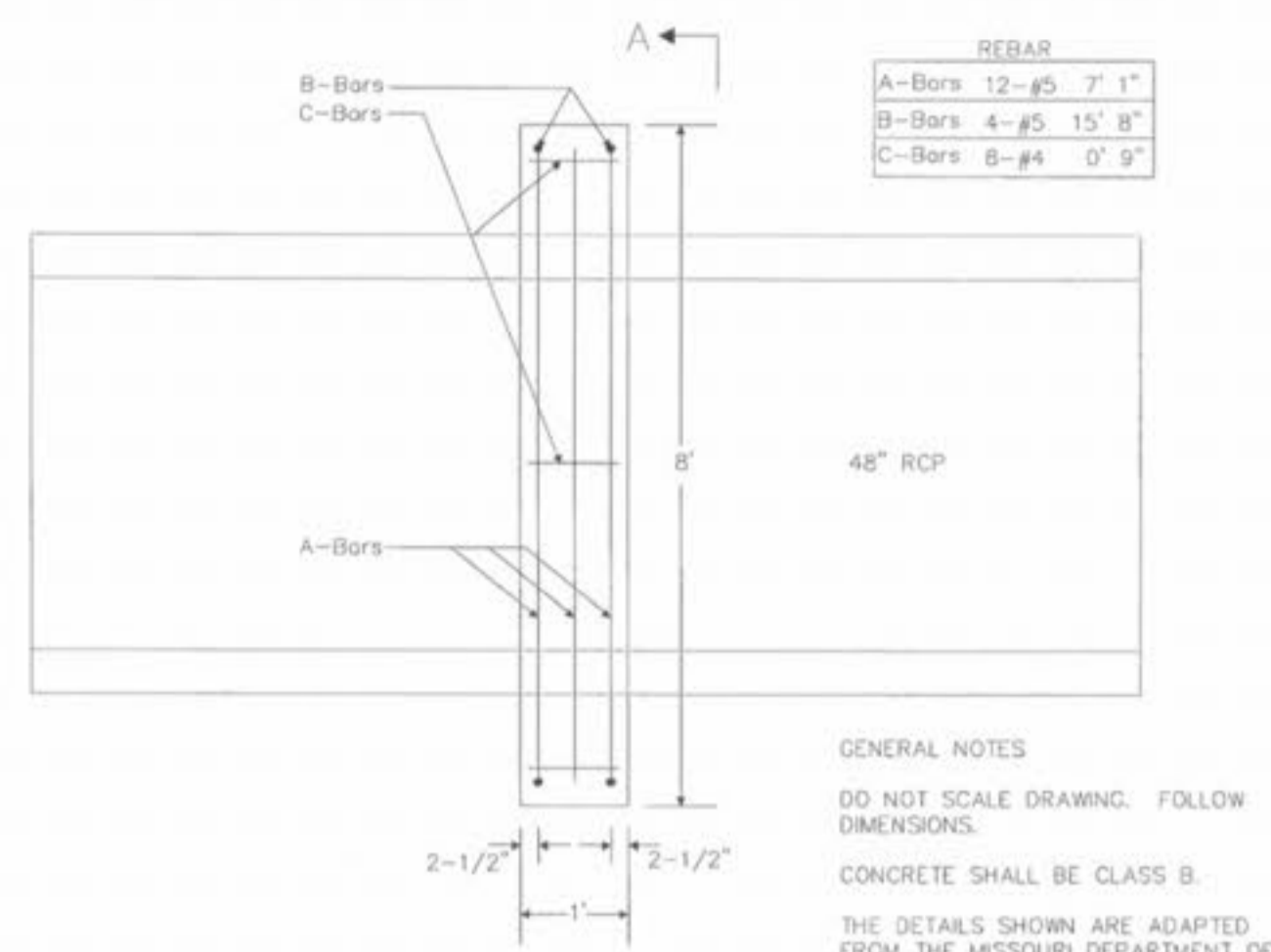
BASIN #1, SECTION A-A



BASIN #1, SECTION B-B

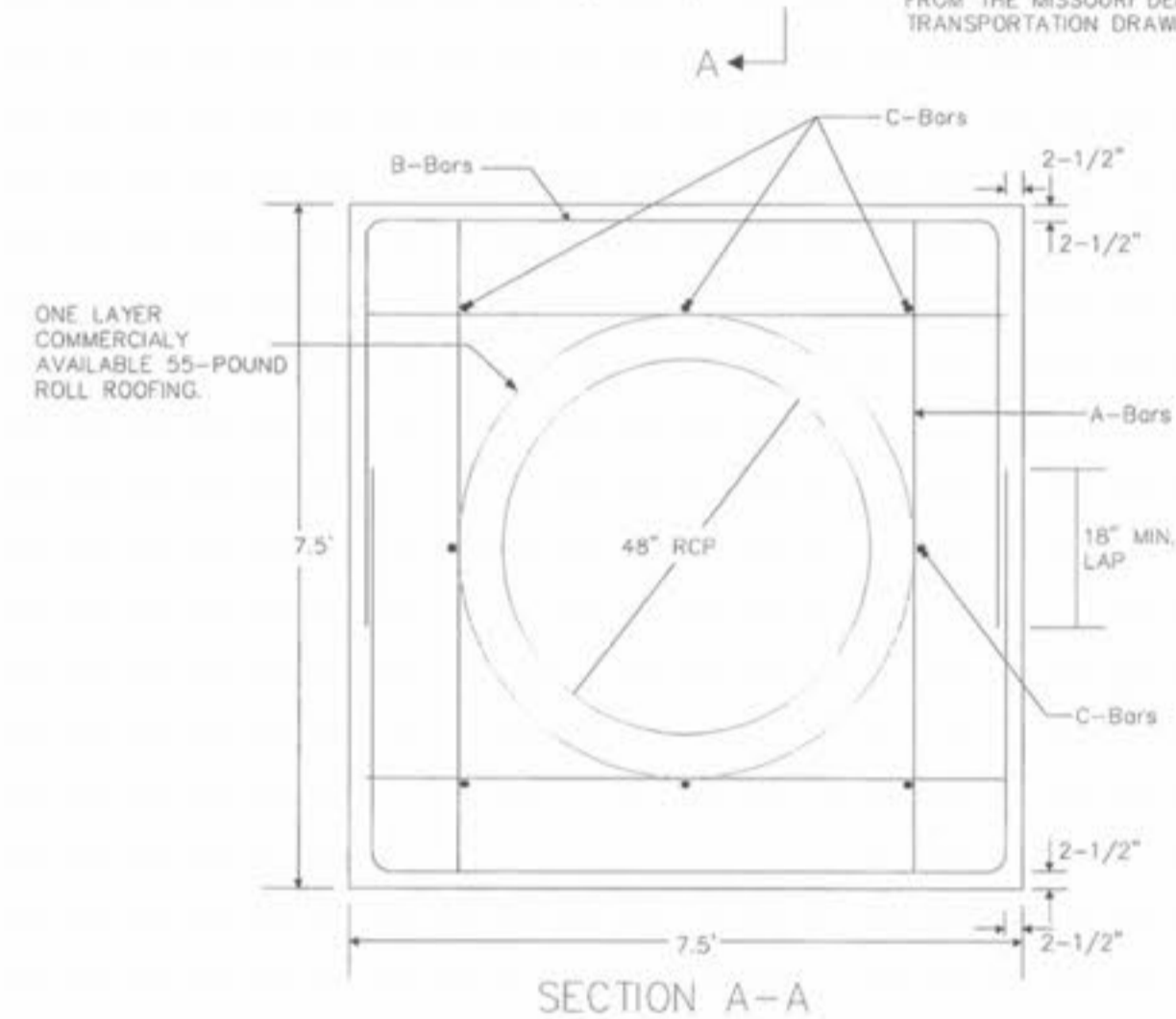


BASIN #1, SECTION C-C

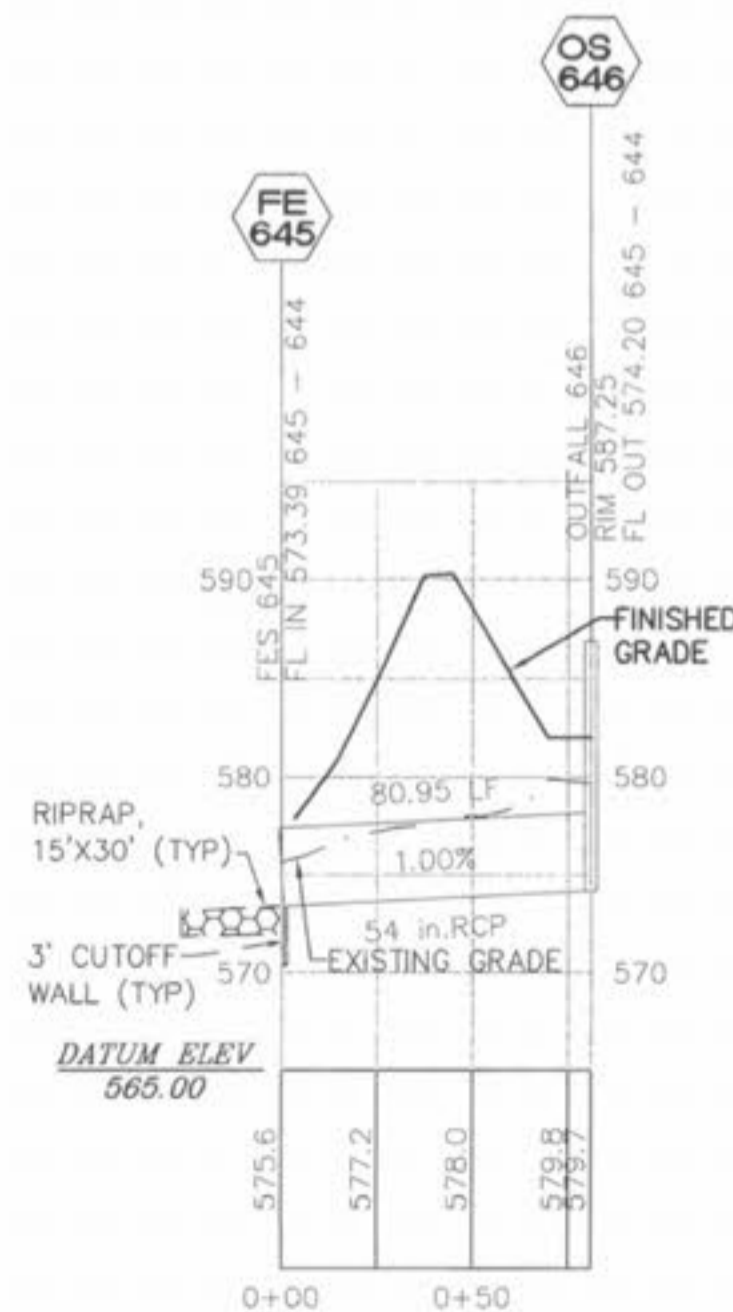


REBAR  
 A-Bars 12-#5 7' 1"  
 B-Bars 4-#5 15' 8"  
 C-Bars 8-#4 9' 9"

GENERAL NOTES  
 DO NOT SCALE DRAWING. FOLLOW DIMENSIONS.  
 CONCRETE SHALL BE CLASS B.  
 THE DETAILS SHOWN ARE ADAPTED FROM THE MISSOURI DEPARTMENT OF TRANSPORTATION DRAWINGS.

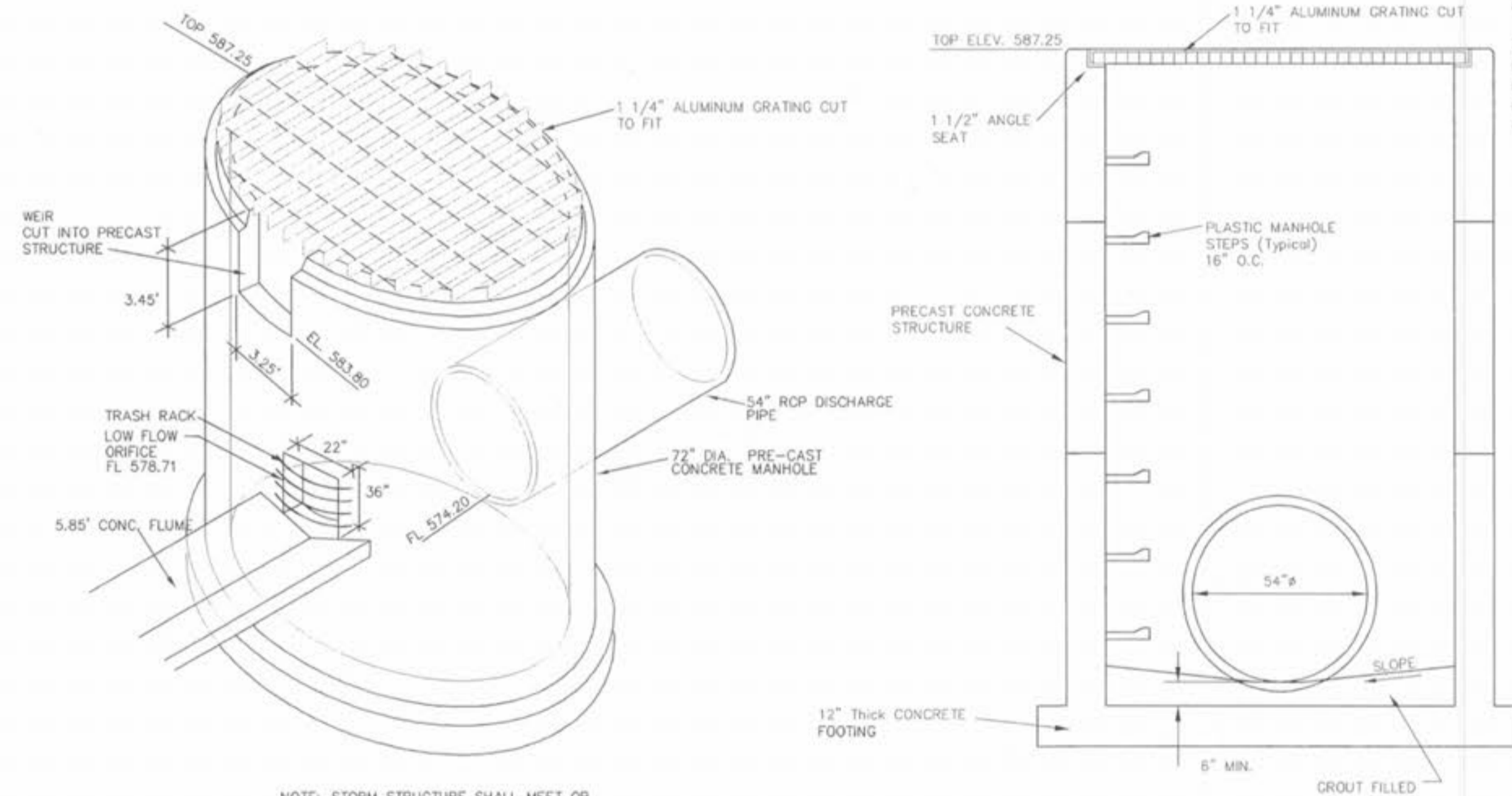
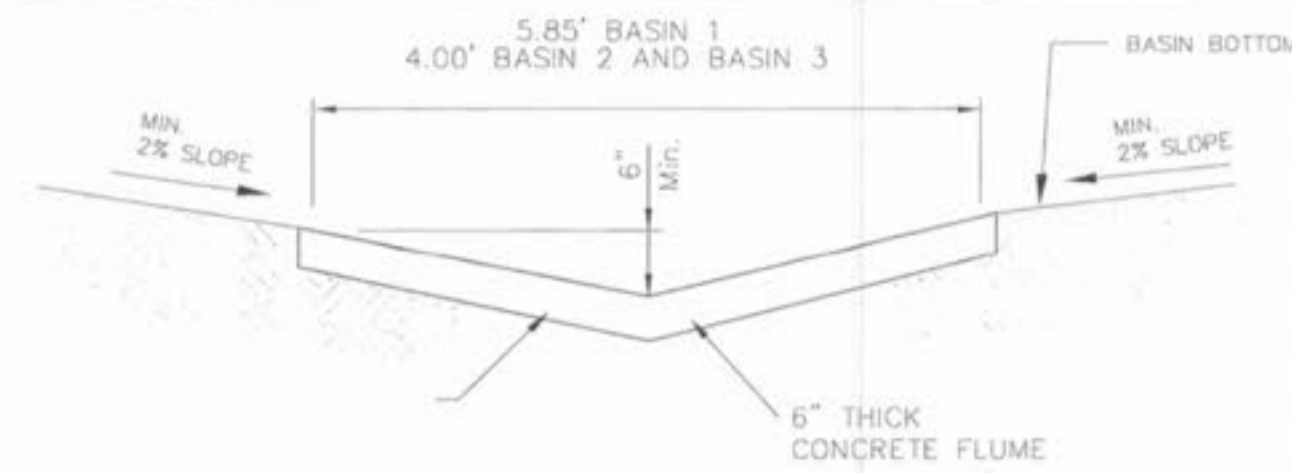


CONCRETE COLLAR DETAIL  
 N.T.S.



- NOTES:
1. CONCRETE SHALL BE 3000 p.s.i. STRENGTH AT 28 DAYS.
  2. 6" TOE WALL SHALL BE CONSTRUCTED AT BOTH UPSTREAM AND DOWNSTREAM ENDS OF FLUME.
  3. 1/2" PREFORMED FIBER JOINT WITH JOINT SEALER TO BE CONSTRUCTED AS TRANSVERSE JOINT AT 50' INTERVALS.
  4. MINIMUM CHANNEL SLOPE TO BE 0.5%.
  5. BASIN BOTTOM TO SLOPE A MINIMUM OF 2% TO FLUME.
  6. CONSTRUCTION JOINTS SHALL BE PLACED EVERY 10 FEET. JOINTS SHALL BE SEALED LIKE PAVEMENT.

DETENTION BASIN  
 CONCRETE FLUME DETAIL



DETENTION STRUCTURE DETAIL BASIN 1

- Note:
1. The joints on the vertical outfall structure, footing, 54" pipe sections and precast sections shall be water tight joints.
  2. Core Requirements, compaction requirements, construction requirements, and material requirements shall be specified by on site soils engineer.

11/17/04 revised standpipe diameter

Revised  
 11-17-04  
 KAS

MAGNOLIA  
 DETENTION

ST. CHARLES ENGINEERING & SURVEYING, INC.  
 801 S. FIFTH STREET, SUITE 202  
 ST. CHARLES, MO 63301  
 TEL: (636) 947-0607 FAX: (636) 947-2448



ORDER NO.  
 030498  
 DATE  
 1-26-04