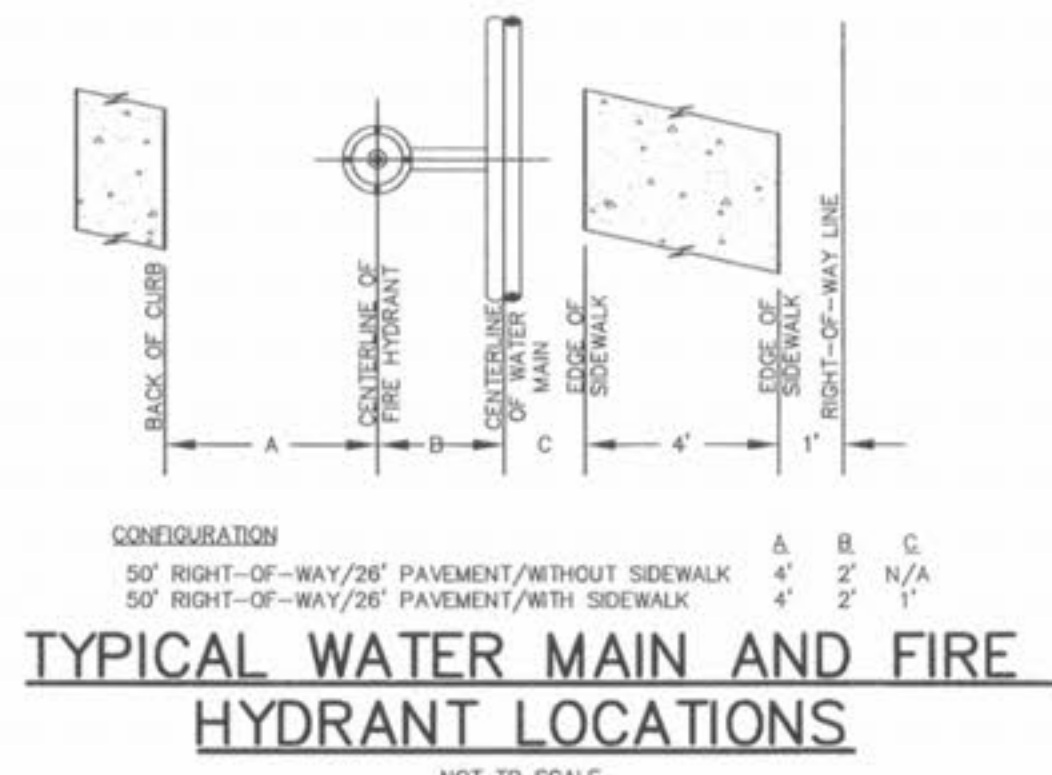
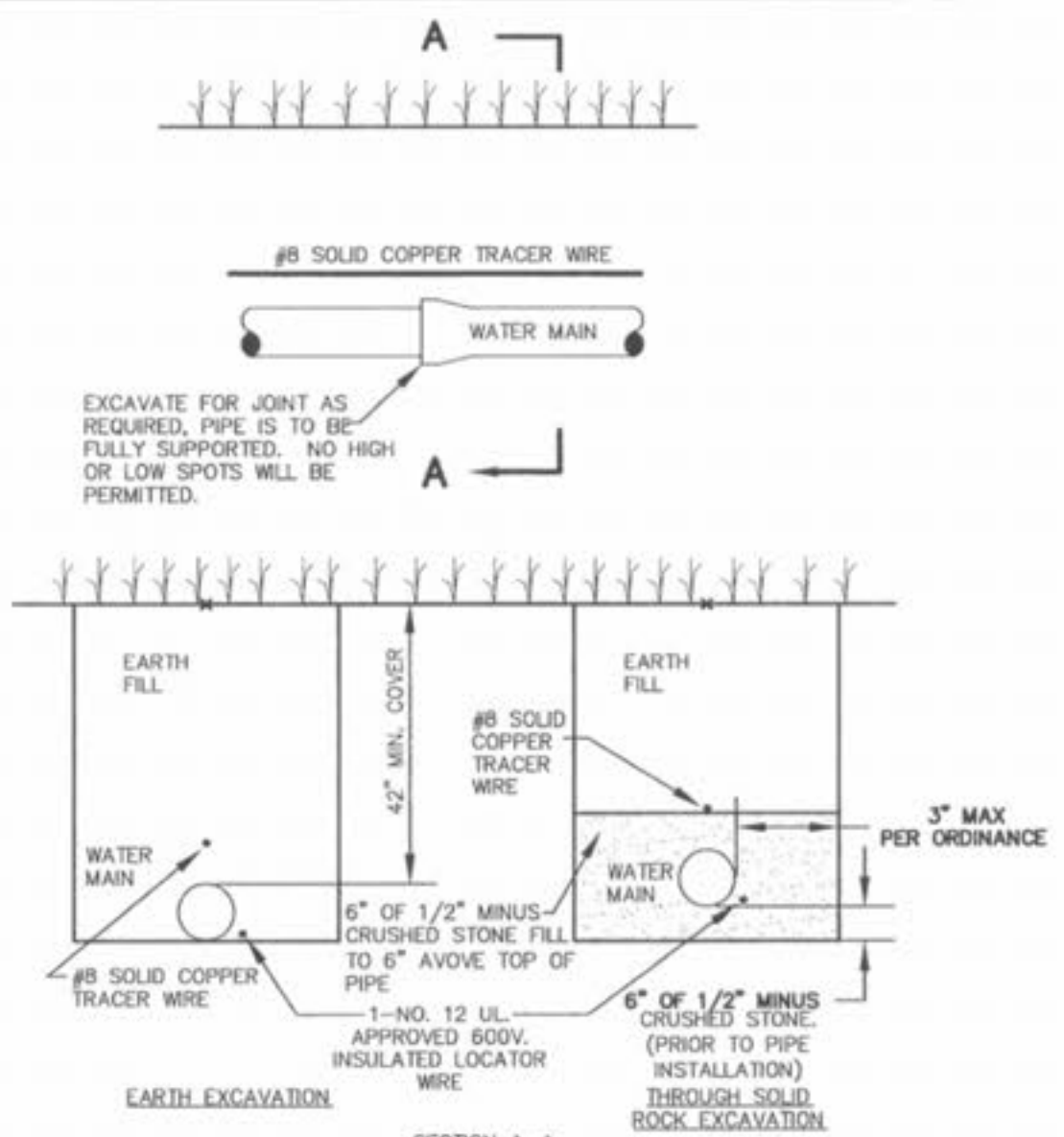


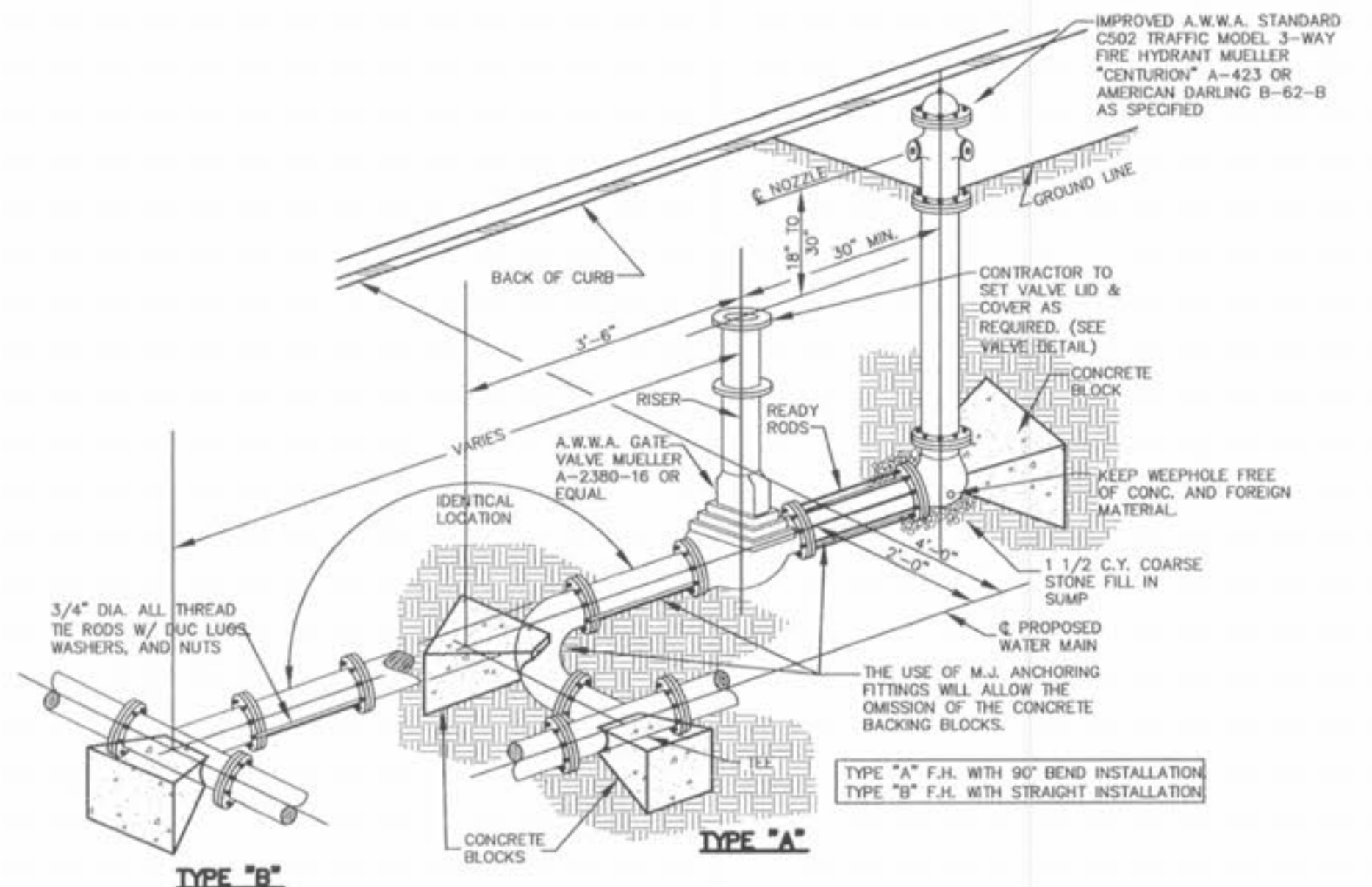
**FLUSHING HYDRANT DETAIL**  
NOT TO SCALE



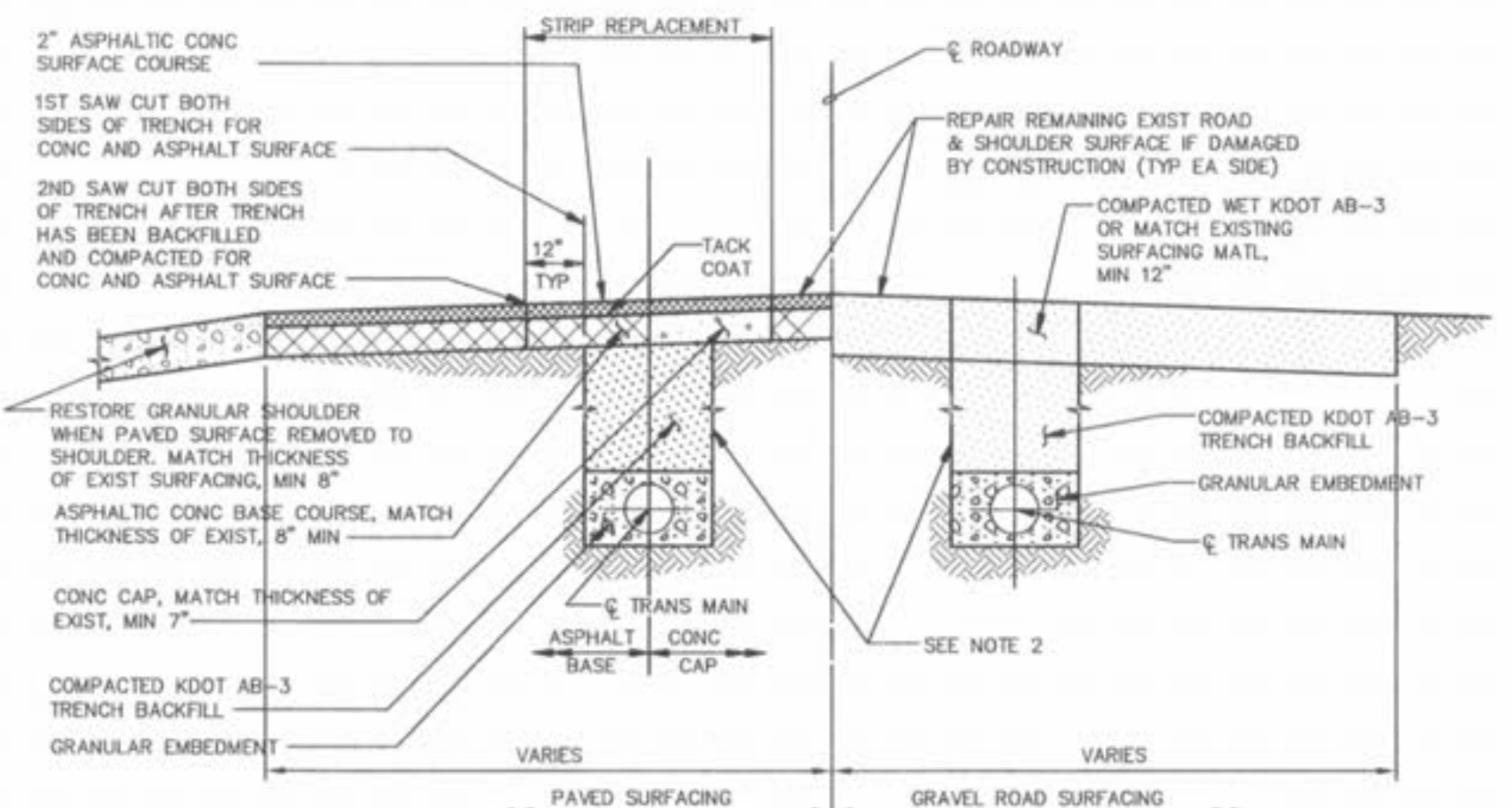
**TYPICAL WATER MAIN AND FIRE HYDRANT LOCATIONS**  
NOT TO SCALE



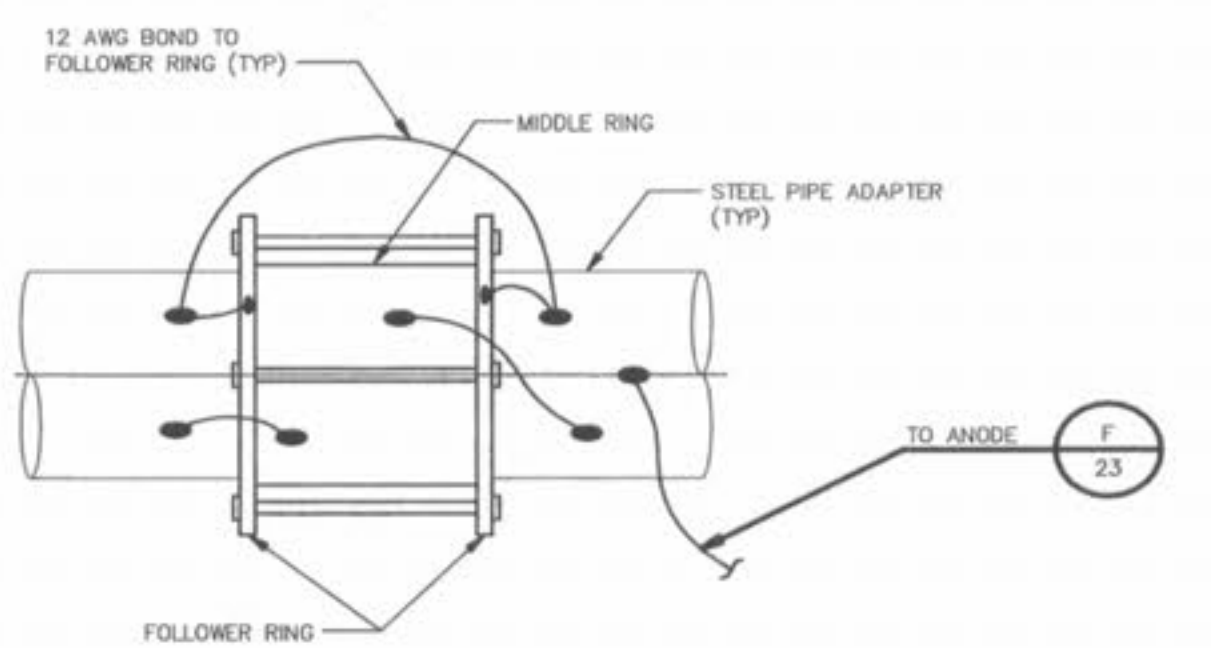
**TYPICAL WATER MAIN INSTALLATION DETAILS**  
NOT TO SCALE



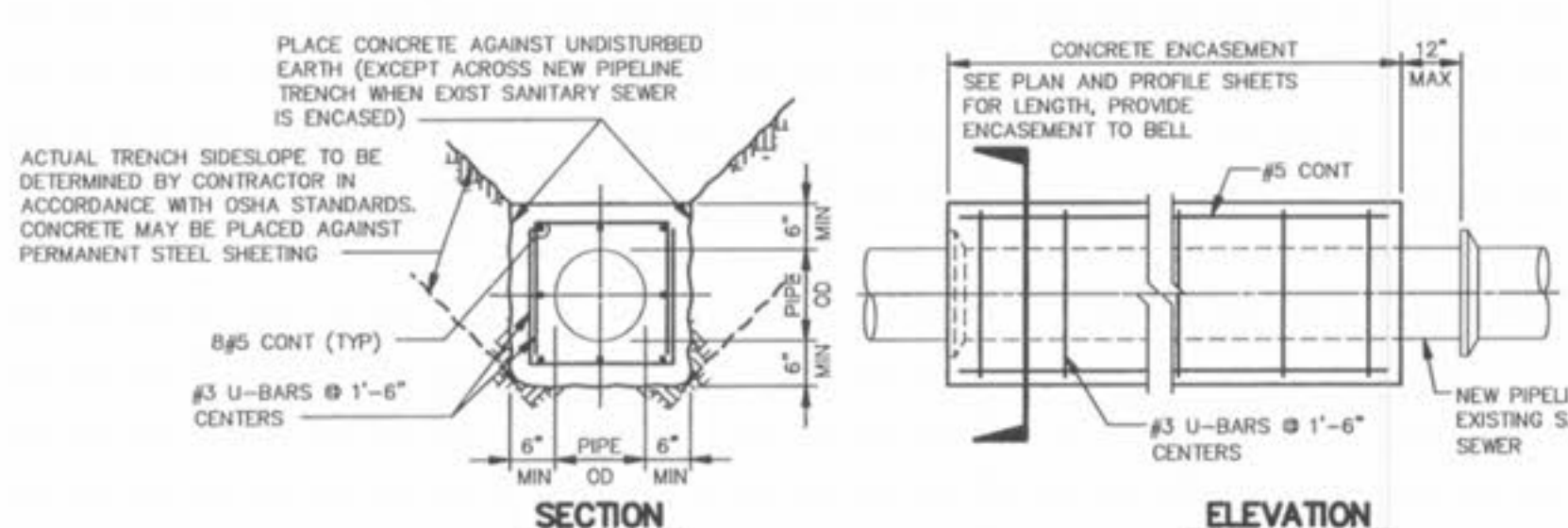
**FIRE HYDRANT DETAIL**  
NOT TO SCALE



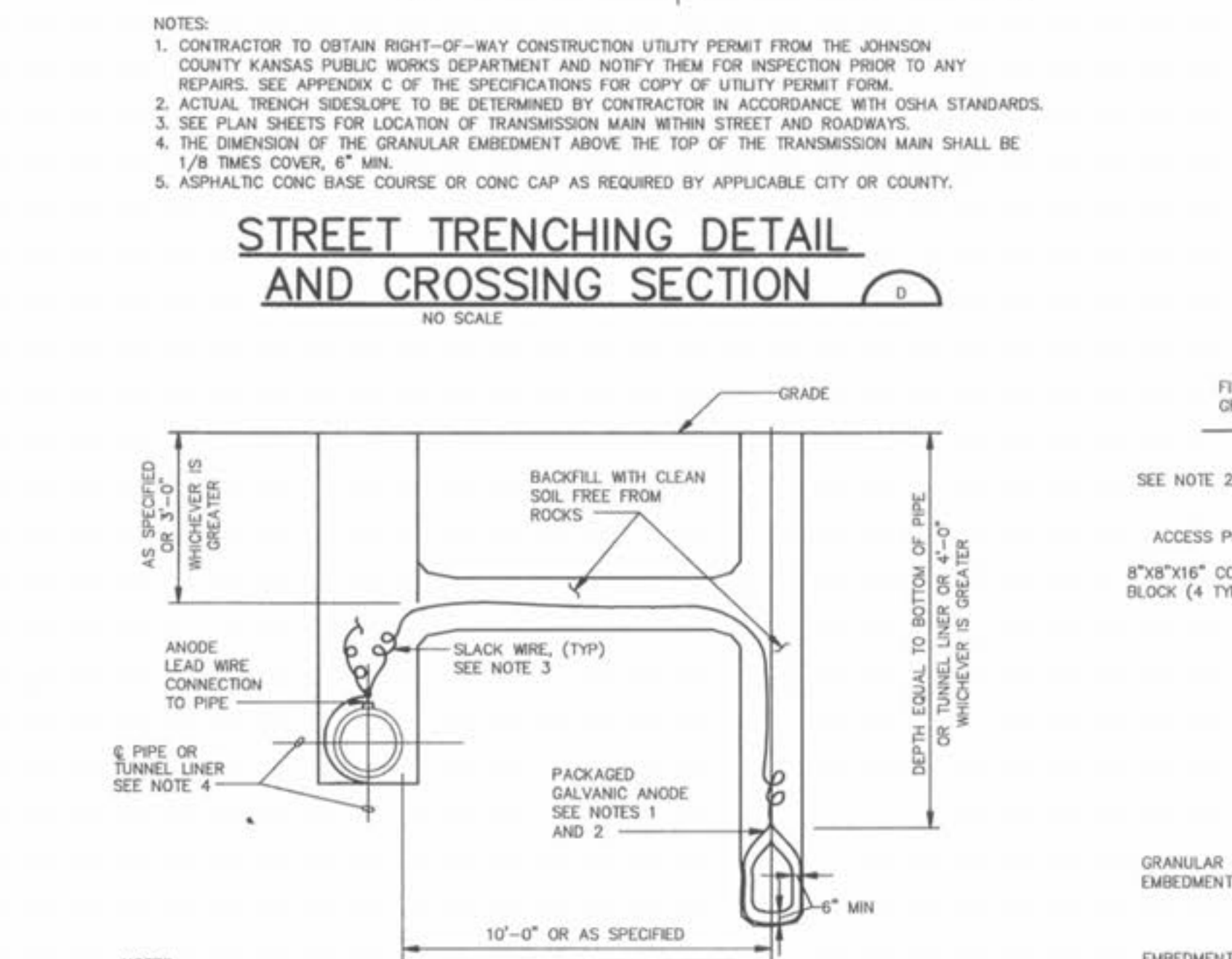
**STREET TRENCHING DETAIL AND CROSSING SECTION**  
NO SCALE



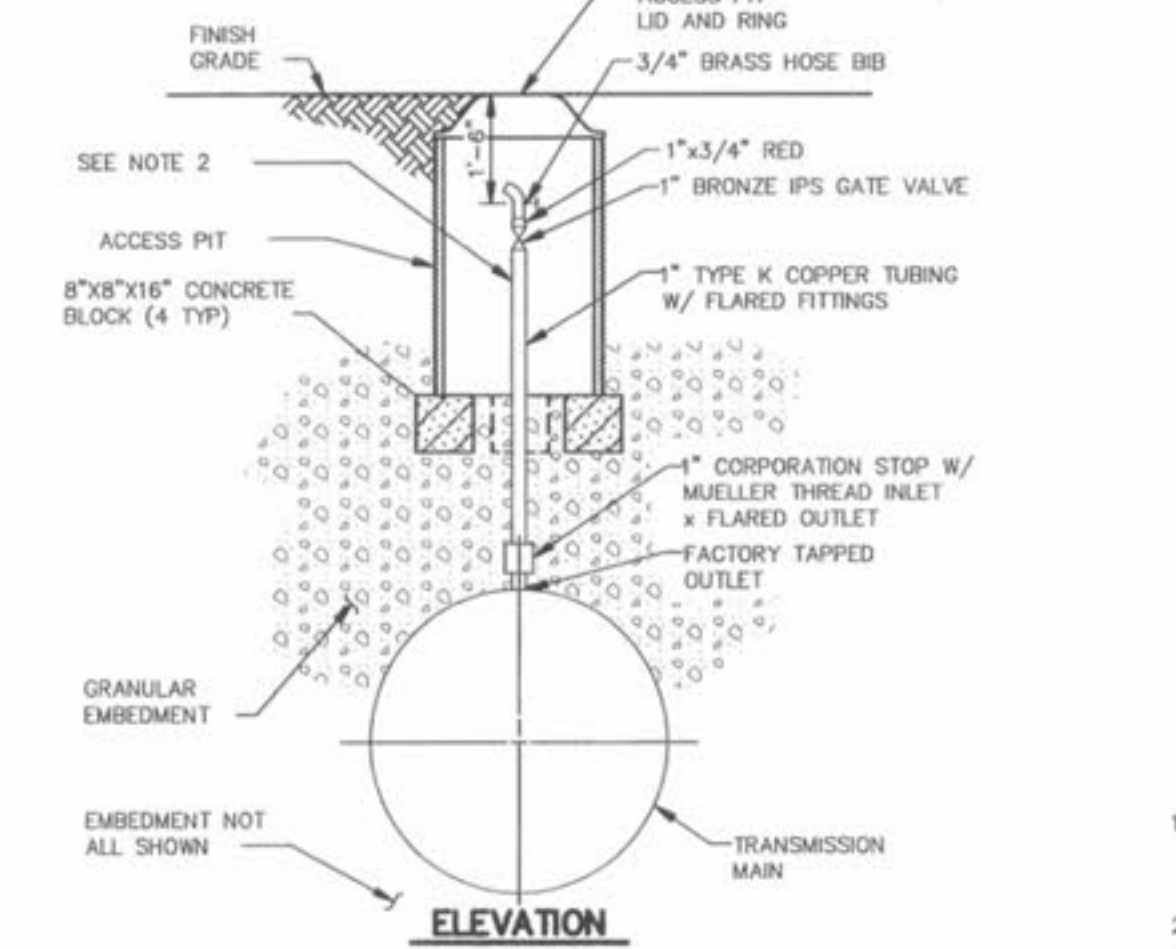
**JOINT BONDING OF STEEL PIPE ADAPTERS FOR PCPP ALTERNATIVE**  
NO SCALE



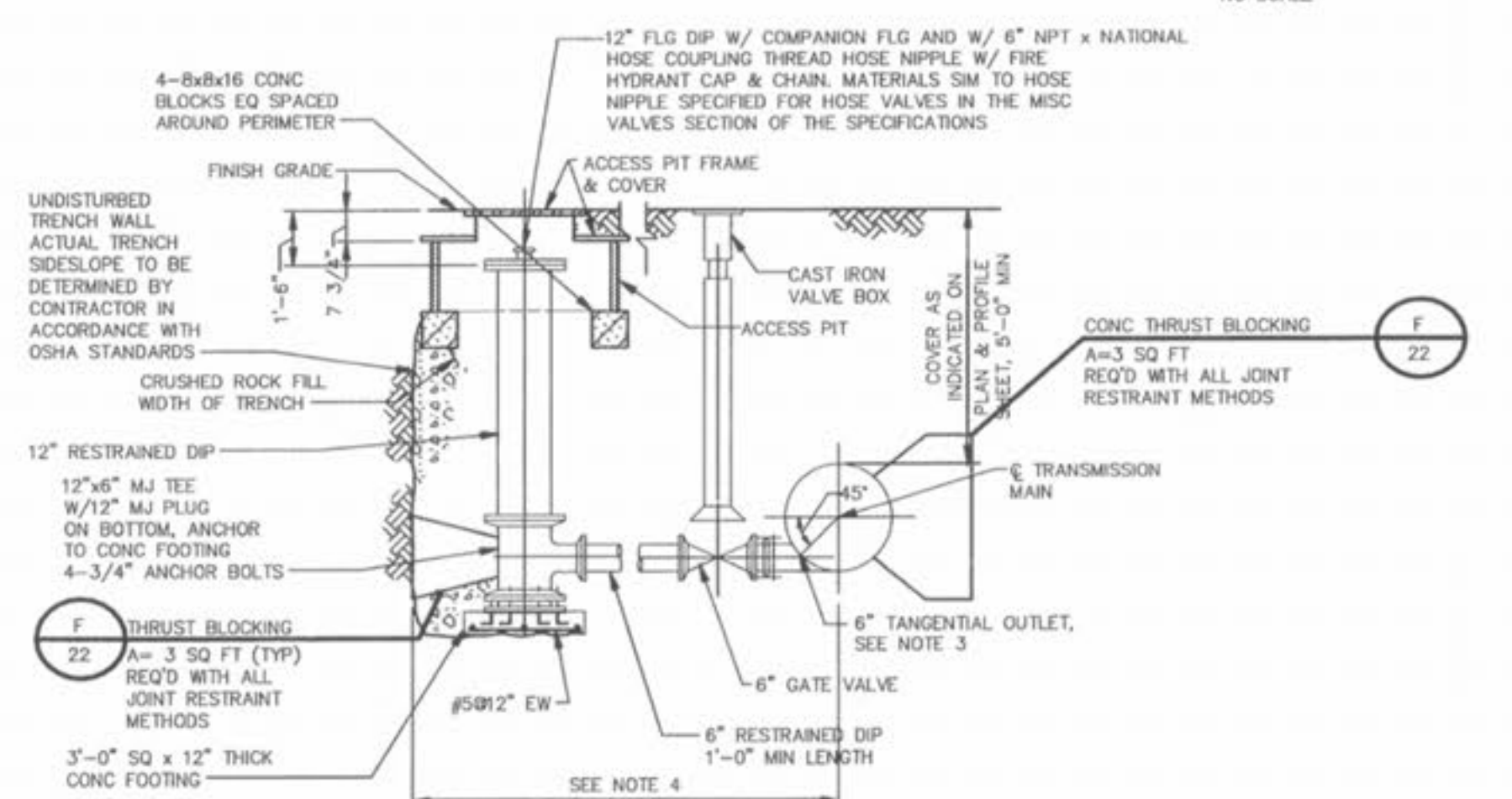
**CONCRETE ENCASUREMENT**  
NO SCALE



**ANODE INSTALLATION FOR STEEL PIPE ADAPTERS FOR PCPP ALTERNATIVE AND FOR TUNNEL LINERS**  
NO SCALE



**MANUAL AIR RELEASE VALVE ASSEMBLY**  
NO SCALE



**BLOWOFF FACILITY**  
NO SCALE

CITY OF O'FALLON  
COMMUNITY DEVELOPMENT  
DESIGN DIVISION  
O'FALLON, MISSOURI

MAGNOLIA  
WATERLINE DETAILS 2

ST. CHARLES ENGINEERING & SURVEYING, INC.  
801 S. FIFTH STREET, SUITE 202  
ST. CHARLES, MO 63801  
TEL: (636) 947-0607 FAX: (636) 947-2448



DISCLAIMER OF RESPONSIBILITY  
I HEREBY SPECIFY THAT THE CONTRACTOR AGREES TO BE RESPONSIBLE FOR ANY AND ALL COSTS INCURRED BY THE CITY OF O'FALLON, MISSOURI, IN CONNECTION WITH THE PROJECT.

DESIGNED: \_\_\_\_\_  
CHECKED: \_\_\_\_\_  
DATE: \_\_\_\_\_  
PROJECT NO.: \_\_\_\_\_  
SHEET \_\_\_\_\_  
OF \_\_\_\_\_

ORDER NO. 03-0498  
DATE 12/1/03  
D9