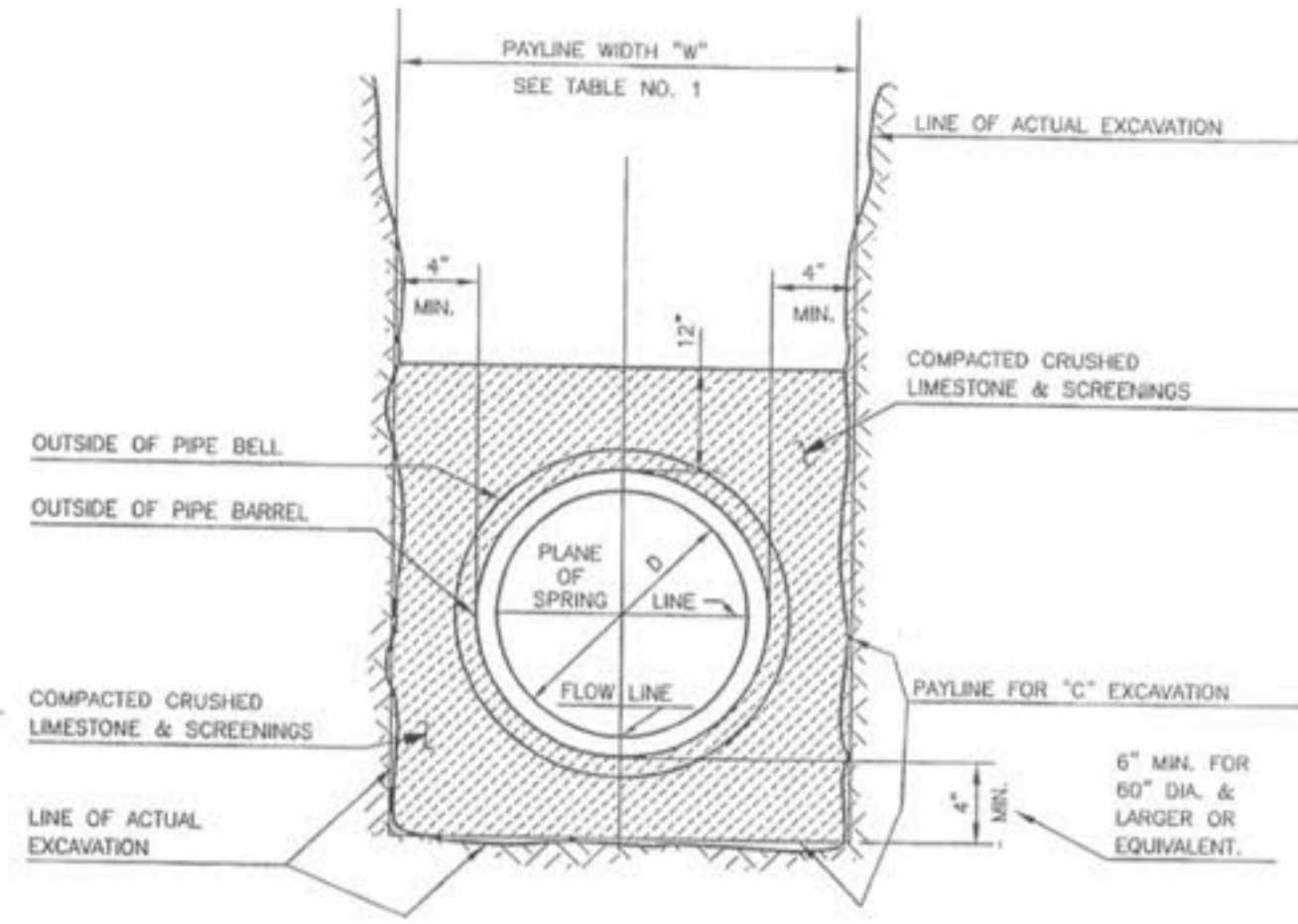
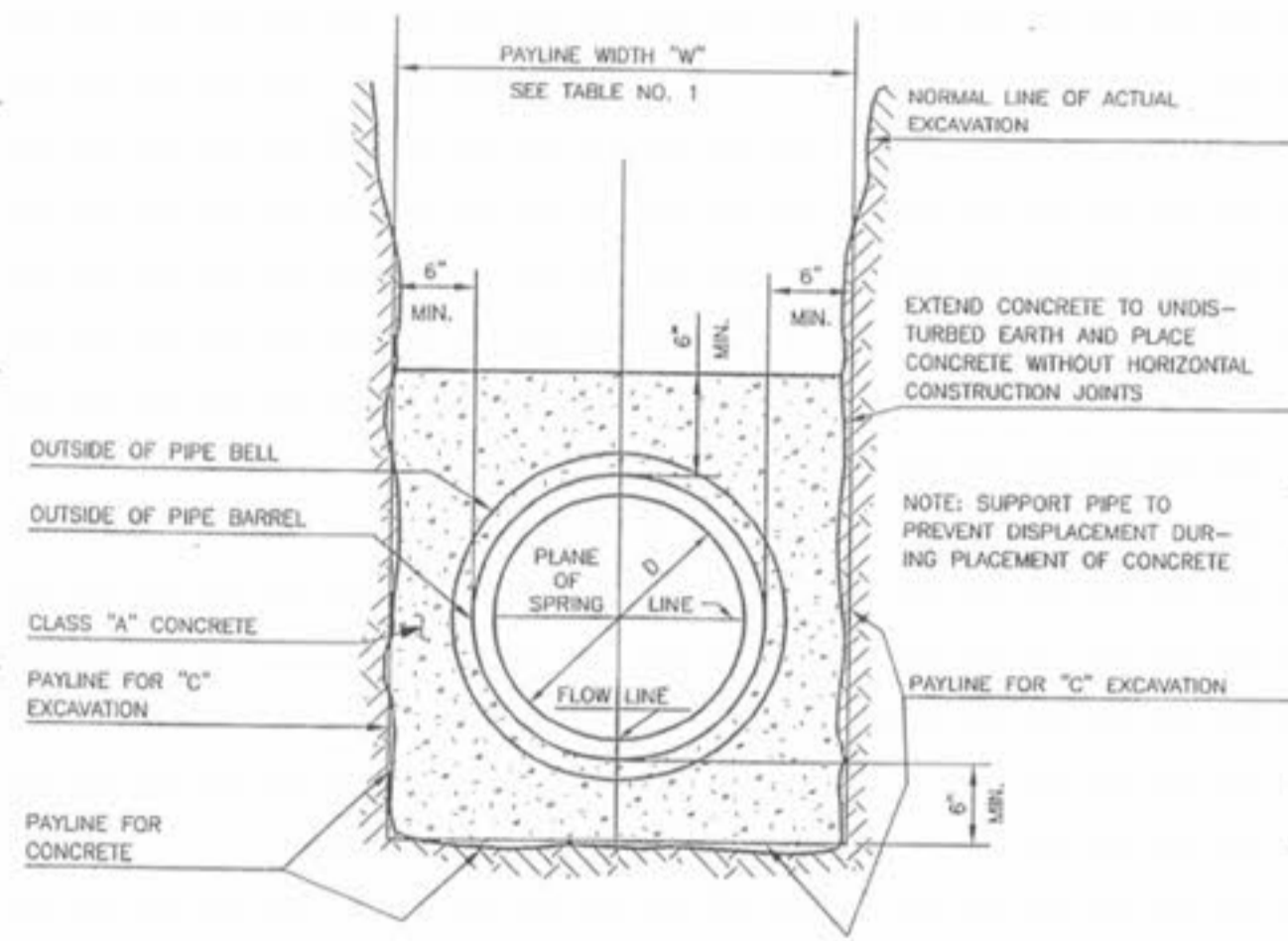


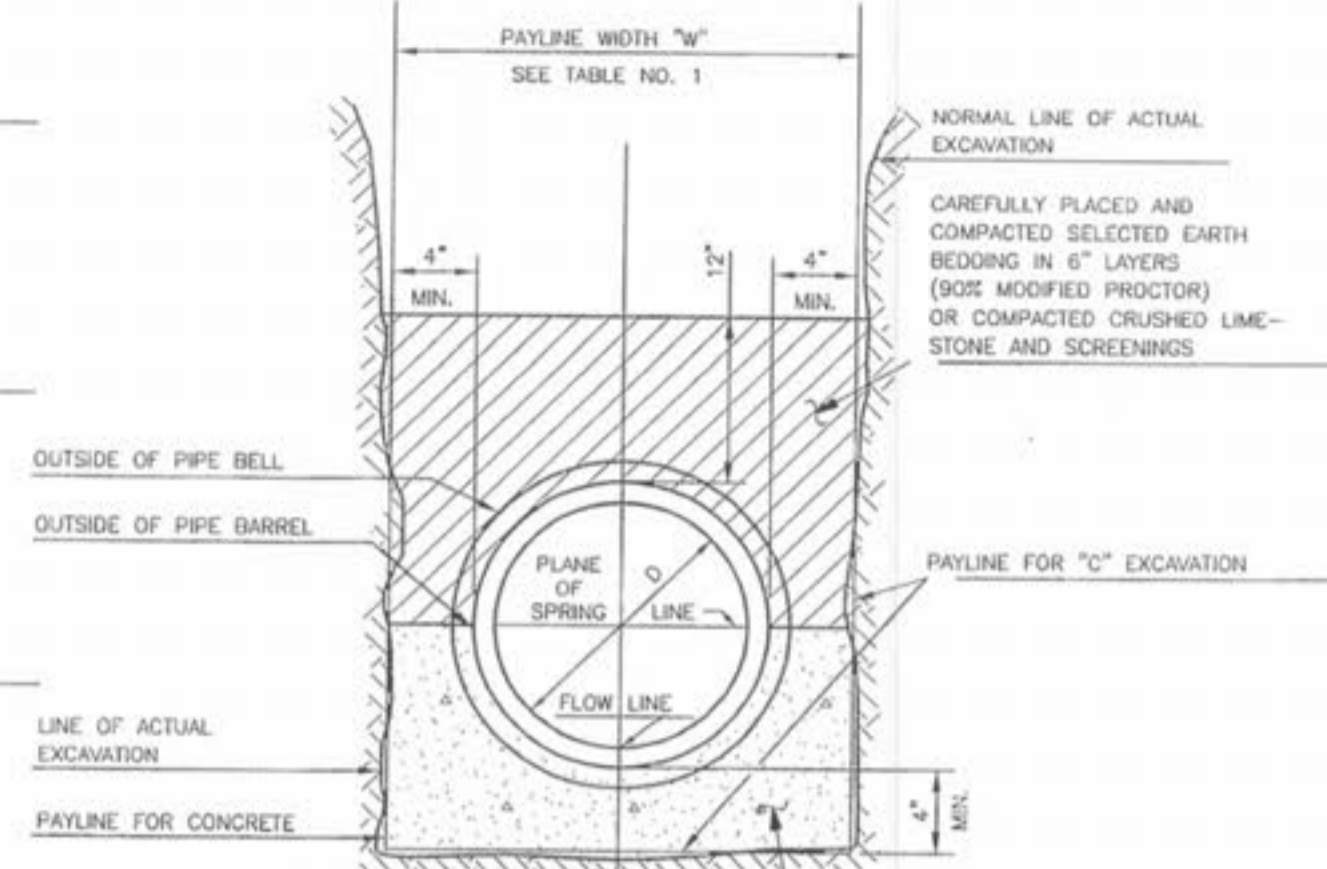
PIPE BEDDING CLASS "C"
(MODIFIED FOR REINFORCED
CONCRETE PIPE)



PIPE BEDDING CLASS "C"
(FOR ALL PIPE EXCEPT
REINFORCED CONCRETE PIPE)



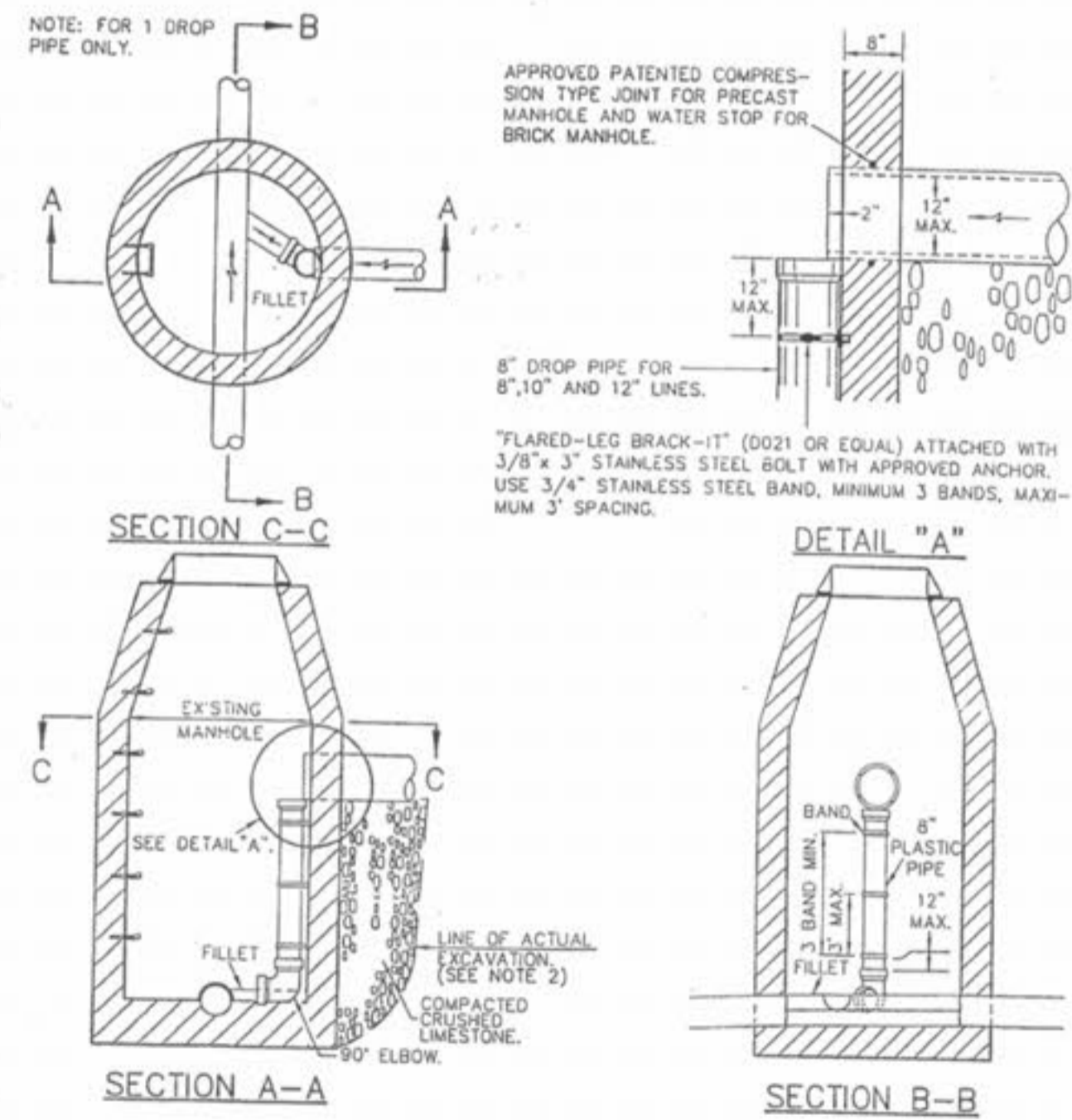
CONCRETE ENCASEMENT



(CLASS "A" BEDDING)
CONCRETE CRADLE

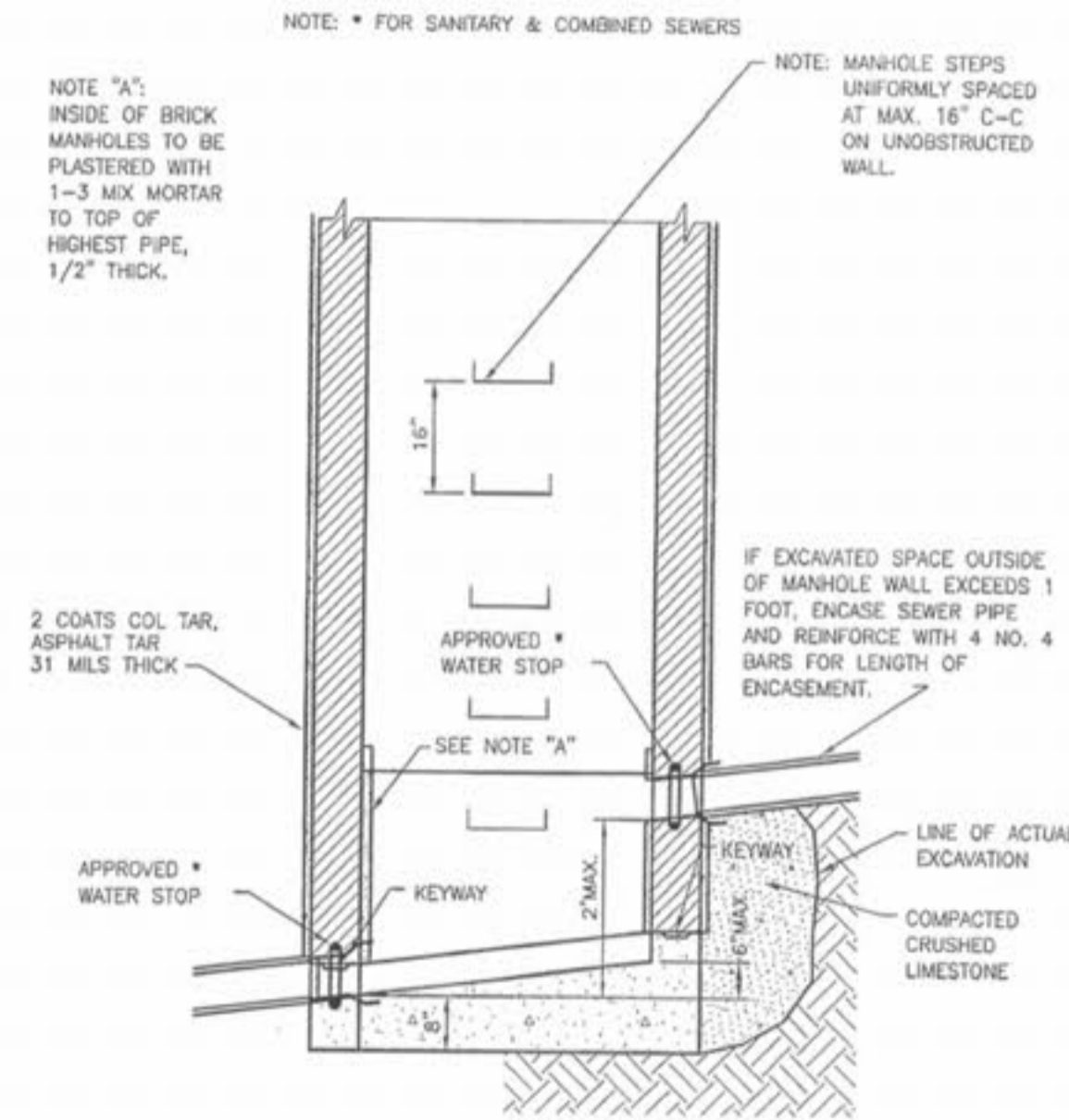
ALSO FOR PIPE SEWERS ON GRADES
25% TO 50% INCLUSIVE.
FOR GRADES EXCEEDING 50% SEE
PROJECT SPECIFICATIONS.

CLASS "A" CONCRETE FOR
PLASTIC PIPE USE CONCRETE
COLLARS TWO FEET LONG AND
SIX INCHES THICK EVERY
TWELVE FEET ADJACENT TO
AND DOWN STREAM OF BELLS.
(IN LIEU OF CONC. CRADLE)

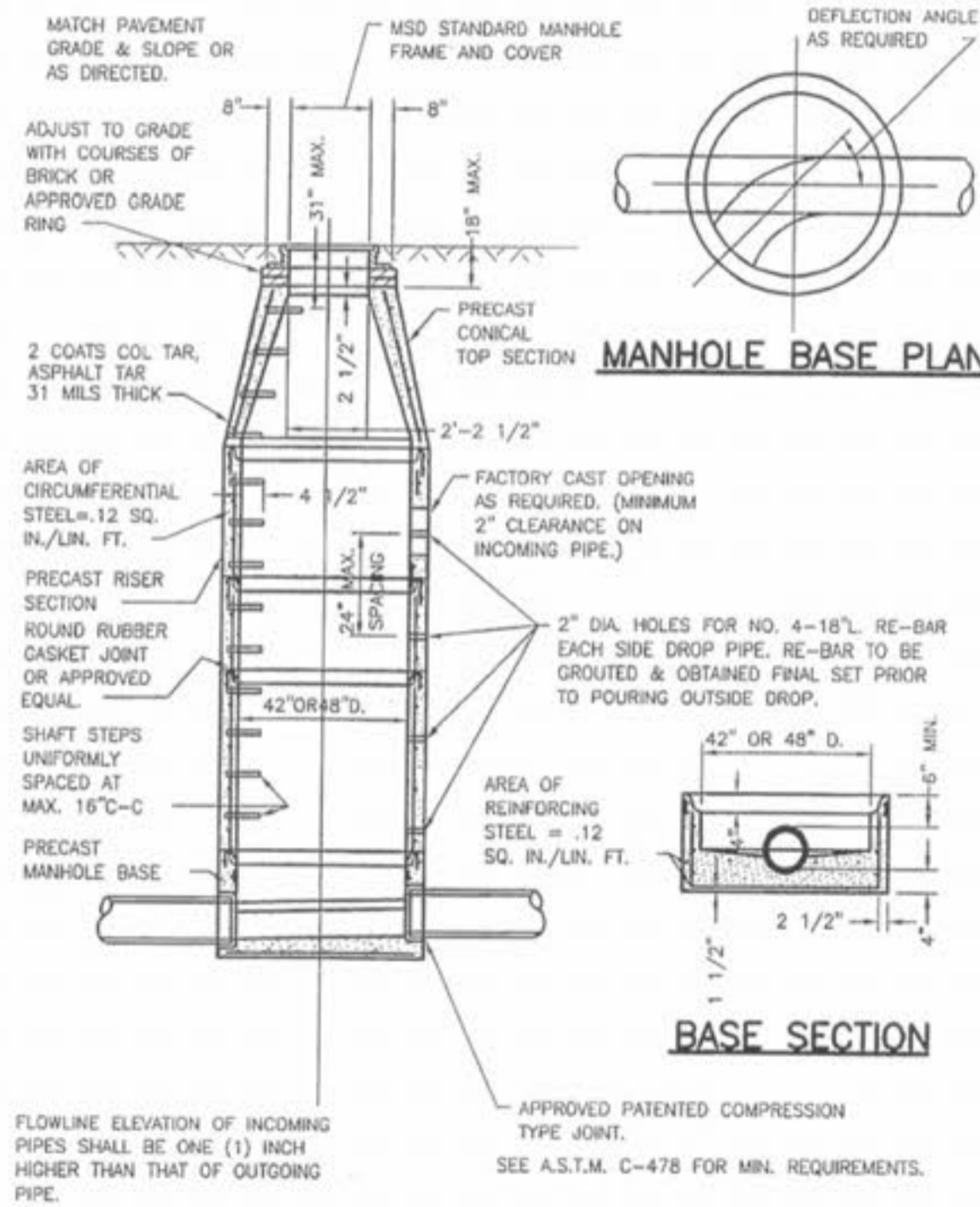


INSIDE FOULWATER
DROP MANHOLE

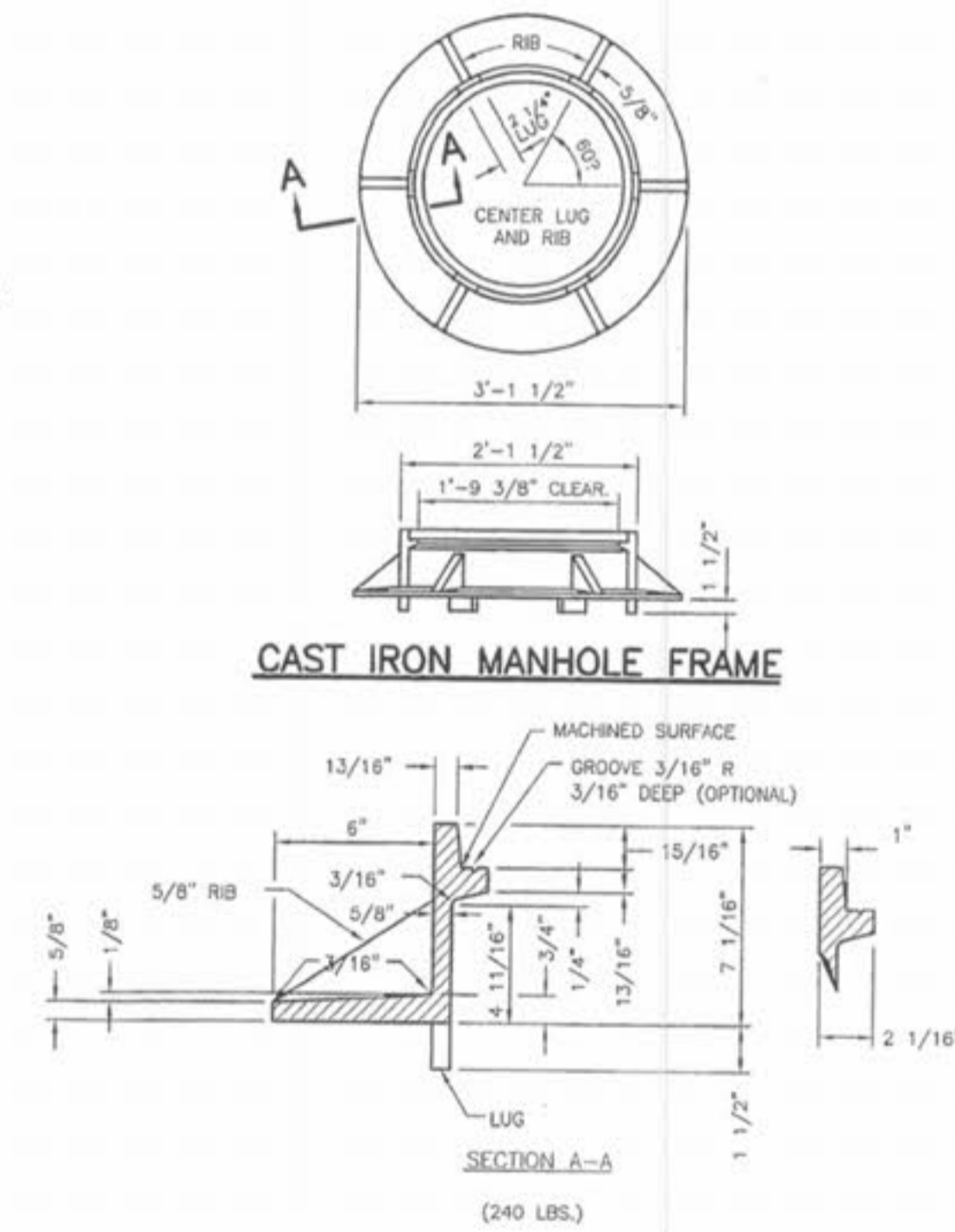
- NOTES:
- 1) NEW INSIDE DROP ON EXISTING MANHOLE REQUIRES THAT THE FLOWLINE OF THE NEW DROP PIPE ELBOW BE CONSTRUCTED AT THE SAME ELEVATION AS THE SPRINGLINE OF THE EXISTING SEWER MAIN AT THE CENTER OF THE EXISTING MANHOLE. A CLASS "A" CONCRETE FILLET AND INVERT SHALL BE CONSTRUCTED FOR DROP PIPE.
 - 2) IF EXCAVATED SPACE OUTSIDE OF MANHOLE WALL EXCEEDS 1 FOOT, PROVIDE 8 INCHES OF CLASS "A" CONCRETE ENCASEMENT ON INCOMING LINE FROM WALL OF MANHOLE TO A MINIMUM OF 2 FEET INTO UNDISTURBED EARTH WITH A MINIMUM OF 4-#4 REBARS FOR LENGTH OF ENCASEMENT OR INSTALL ONE LENGTH OF D.I.P. FROM MANHOLE INTO UNDISTURBED EARTH.



INSIDE DROP
(8" THRU 24" DIA. PIPE)



PRE-CAST CONCRETE MANHOLE
FOR SEWERS
8" THROUGH 12"



CAST IRON
MANHOLE FRAME



DISCLAIMER OF RESPONSIBILITY
I HEREBY CERTIFY THAT THE DOCUMENTS REFERRED TO ARE AUTHENTICATED BY ME AND ARE LIMITED TO THE DESIGN AND I HEREBY DISCLAIM ANY RESPONSIBILITY FOR ALL OTHER DOCUMENTS, INSTRUMENTS, SPECIFICATIONS, NOTES OF SITE OR OTHERWISE USED FOR ANY PART OR PARTS OF THE WORK DESCRIBED IN THE PROJECTS OF SURVEY.

DESIGNED: _____
CHECKED: _____
DATE: _____
PROJECT NO.: _____
SHEET _____ OF _____

ST. CHARLES ENGINEERING & SURVEYING, INC.
801 S. FIFTH STREET, SUITE 202
ST. CHARLES, MO 63301
TEL: (636) 947-0607 FAX: (636) 947-2448



ORDER NO. 03-0498
DATE 12/1/03
D6

MAGNOLIA
SANITARY DETAILS 1

CITY OF FALLON
DEPARTMENT OF PUBLIC
WORKS DESIGN GROUP
O'FALLON, MISSOURI