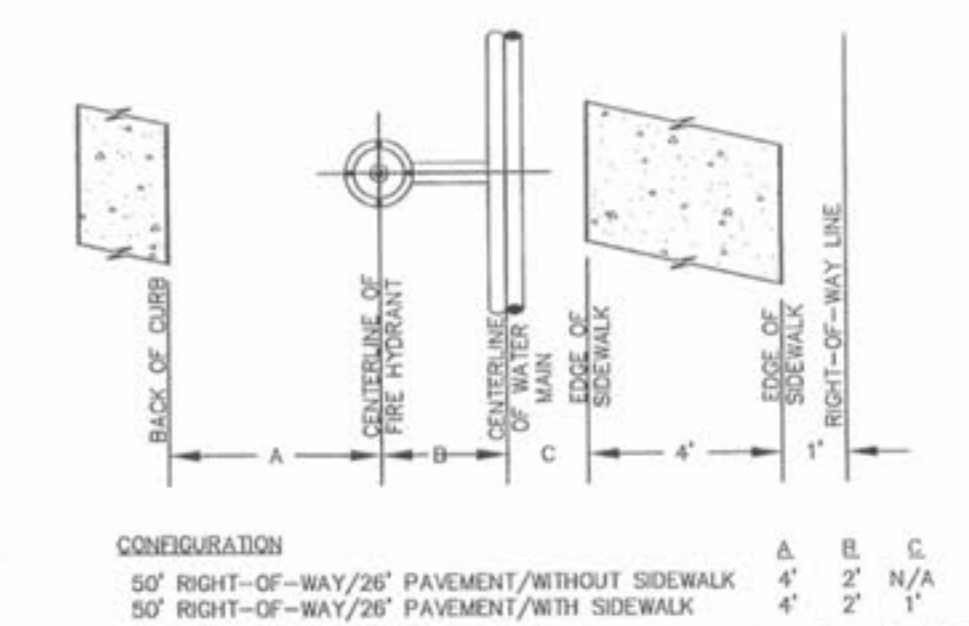
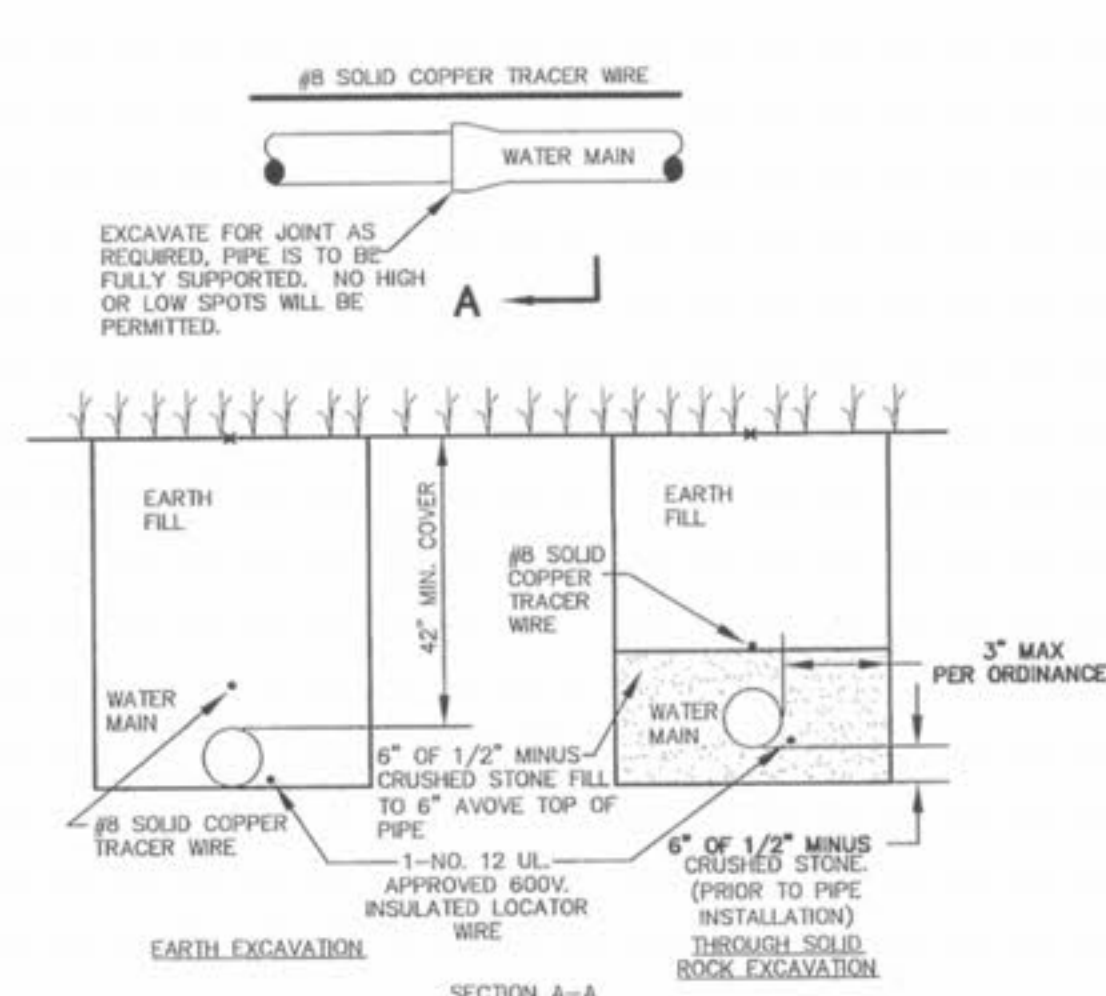


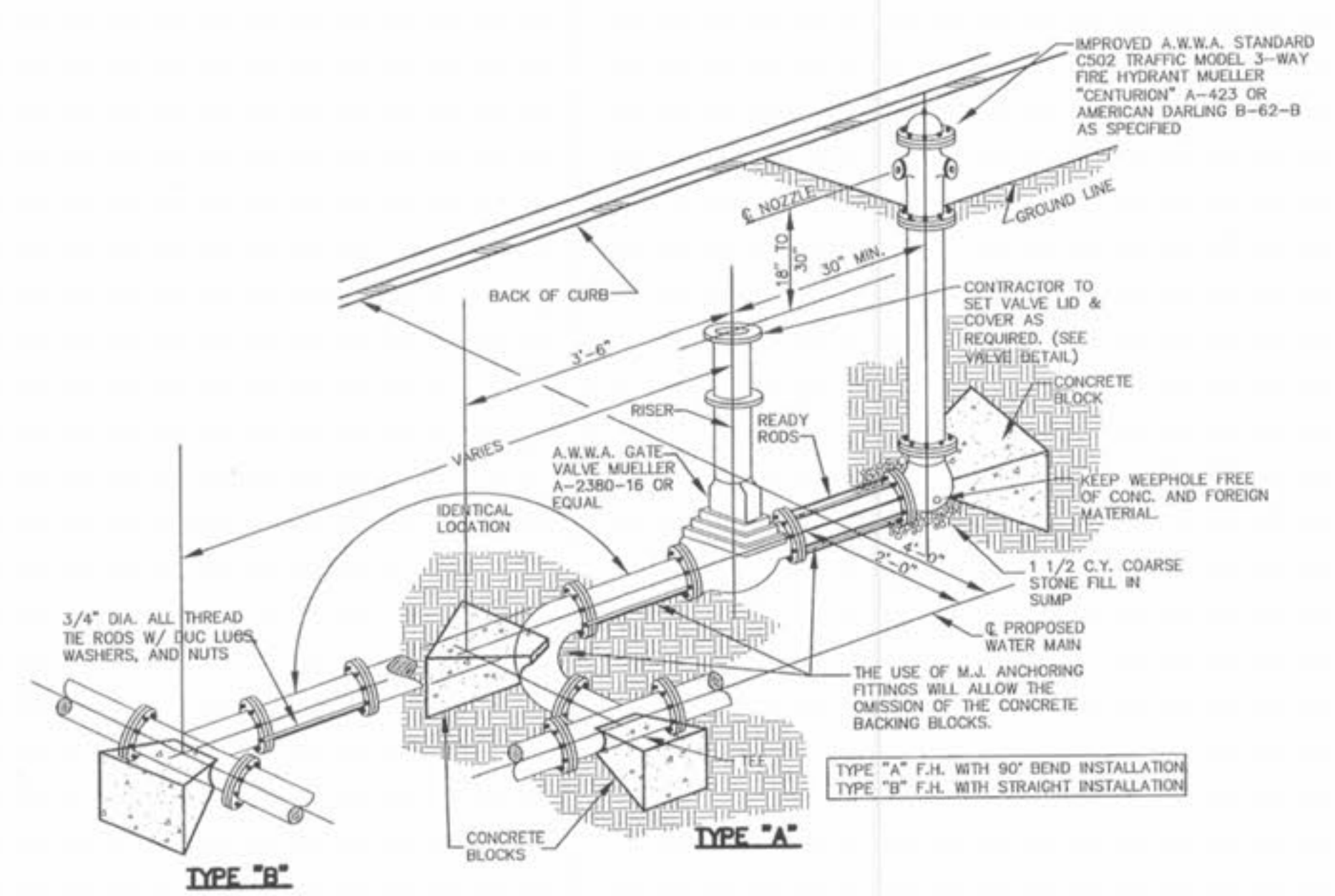
FLUSHING HYDRANT DETAIL
NOT TO SCALE



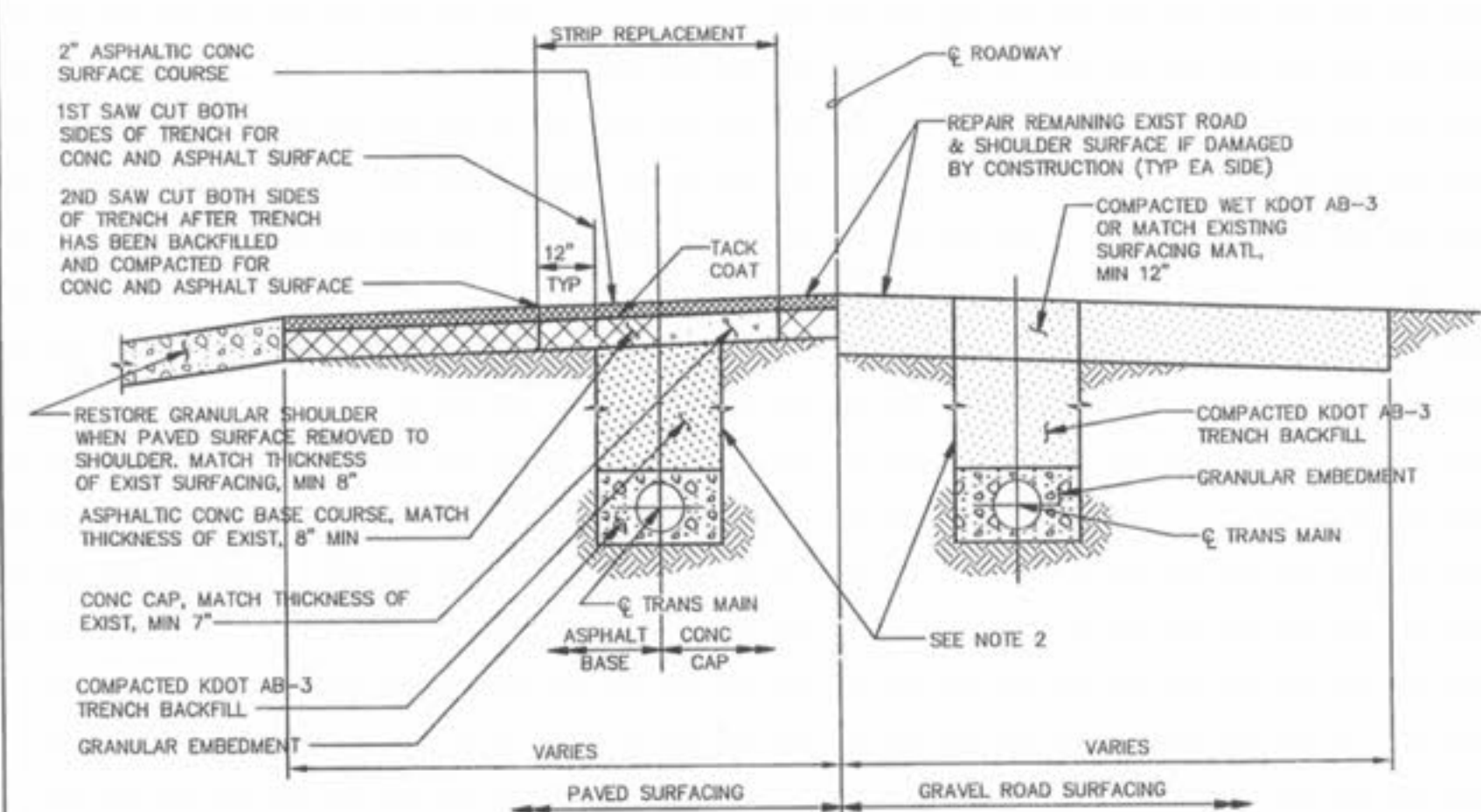
TYPICAL WATER MAIN AND FIRE HYDRANT LOCATIONS
NOT TO SCALE



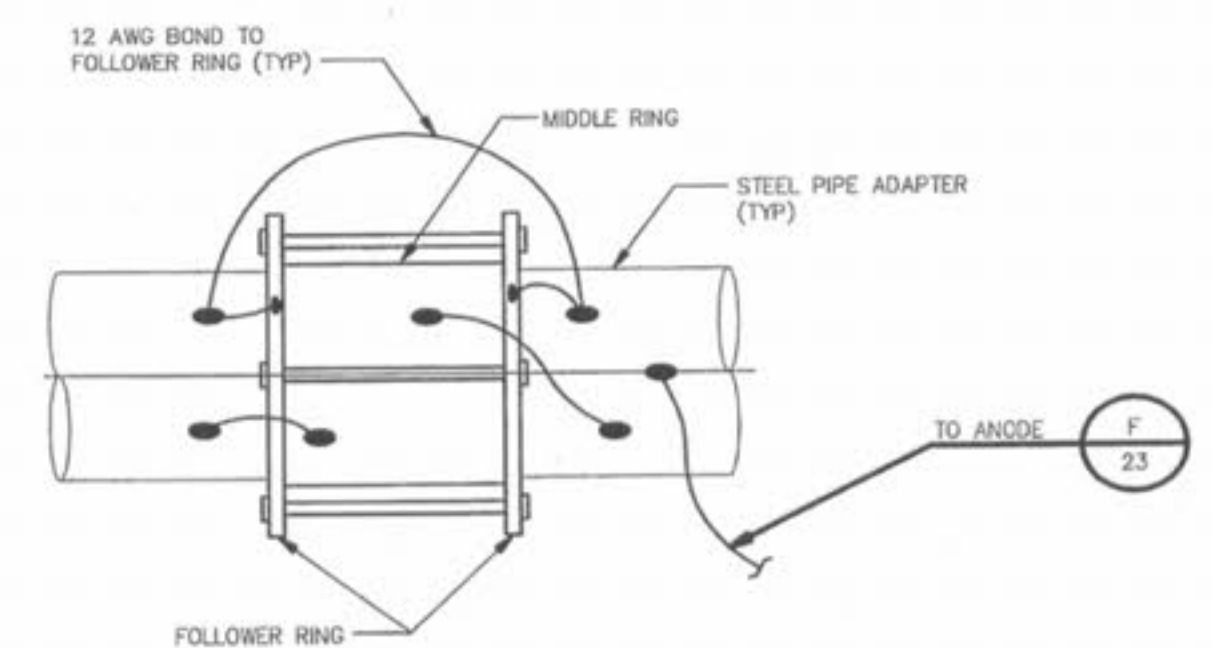
TYPICAL WATER MAIN INSTALLATION DETAILS
NOT TO SCALE



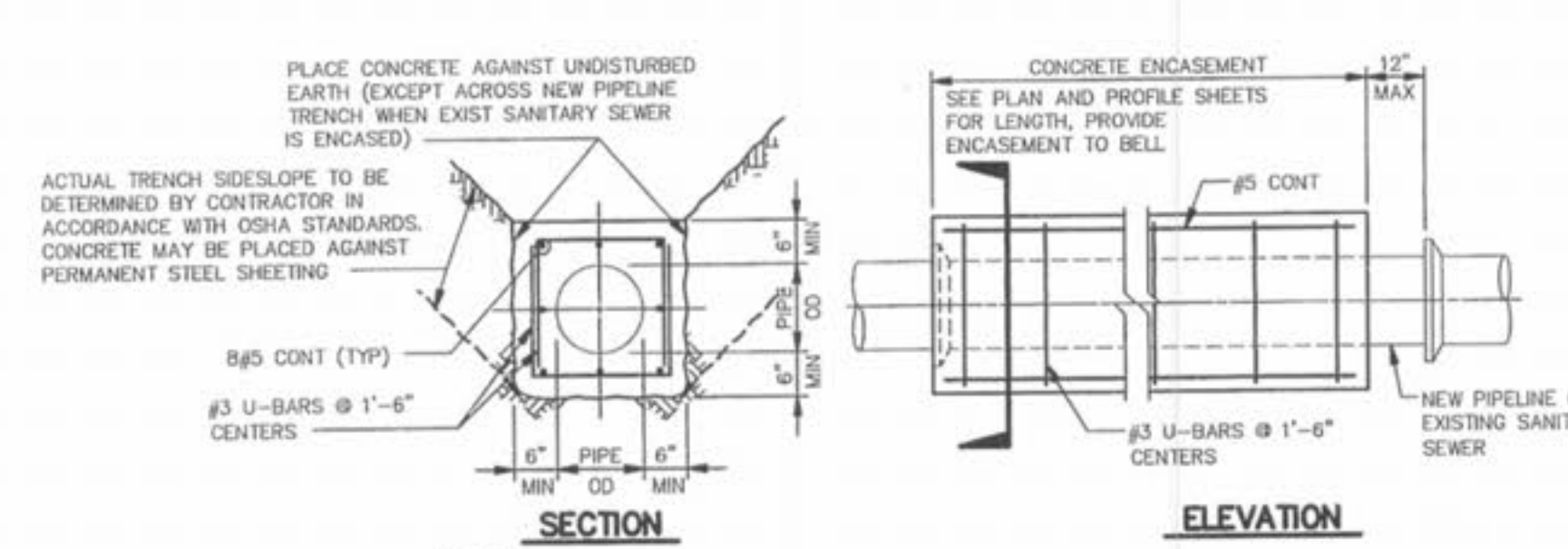
FIRE HYDRANT DETAIL
NOT TO SCALE



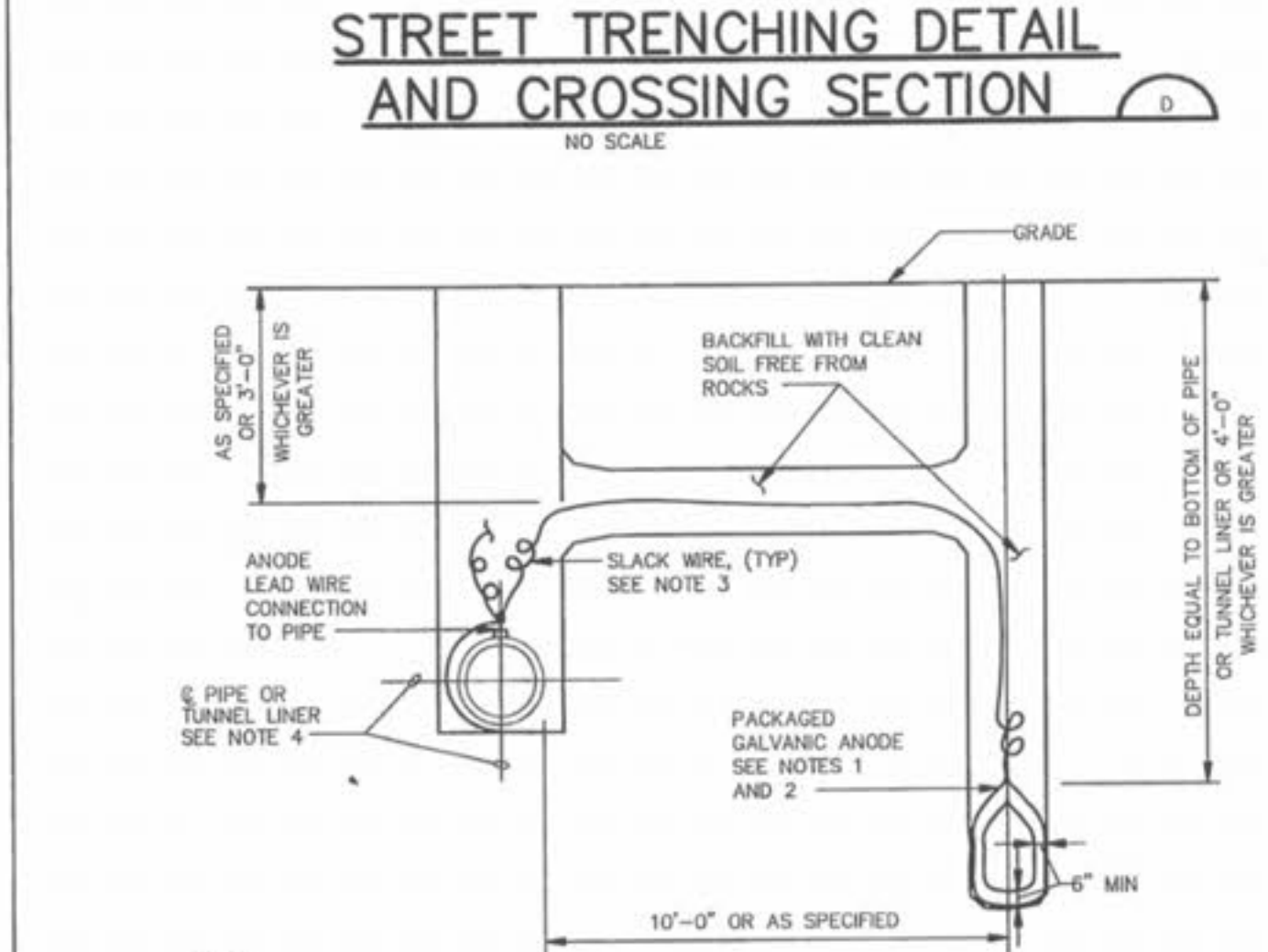
STREET TRENCHING DETAIL AND CROSSING SECTION
NO SCALE



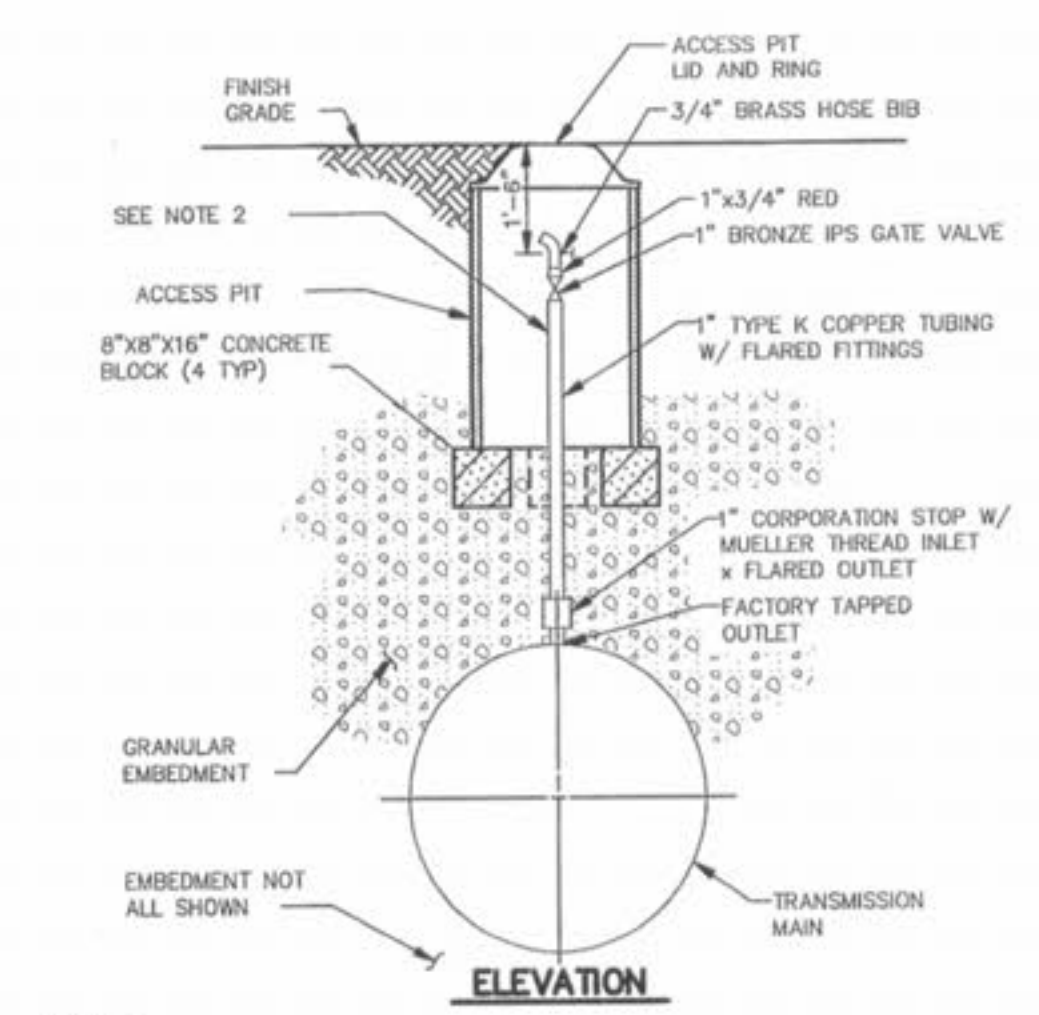
JOINT BONDING OF STEEL PIPE ADAPTERS FOR PCCP ALTERNATIVE
NO SCALE



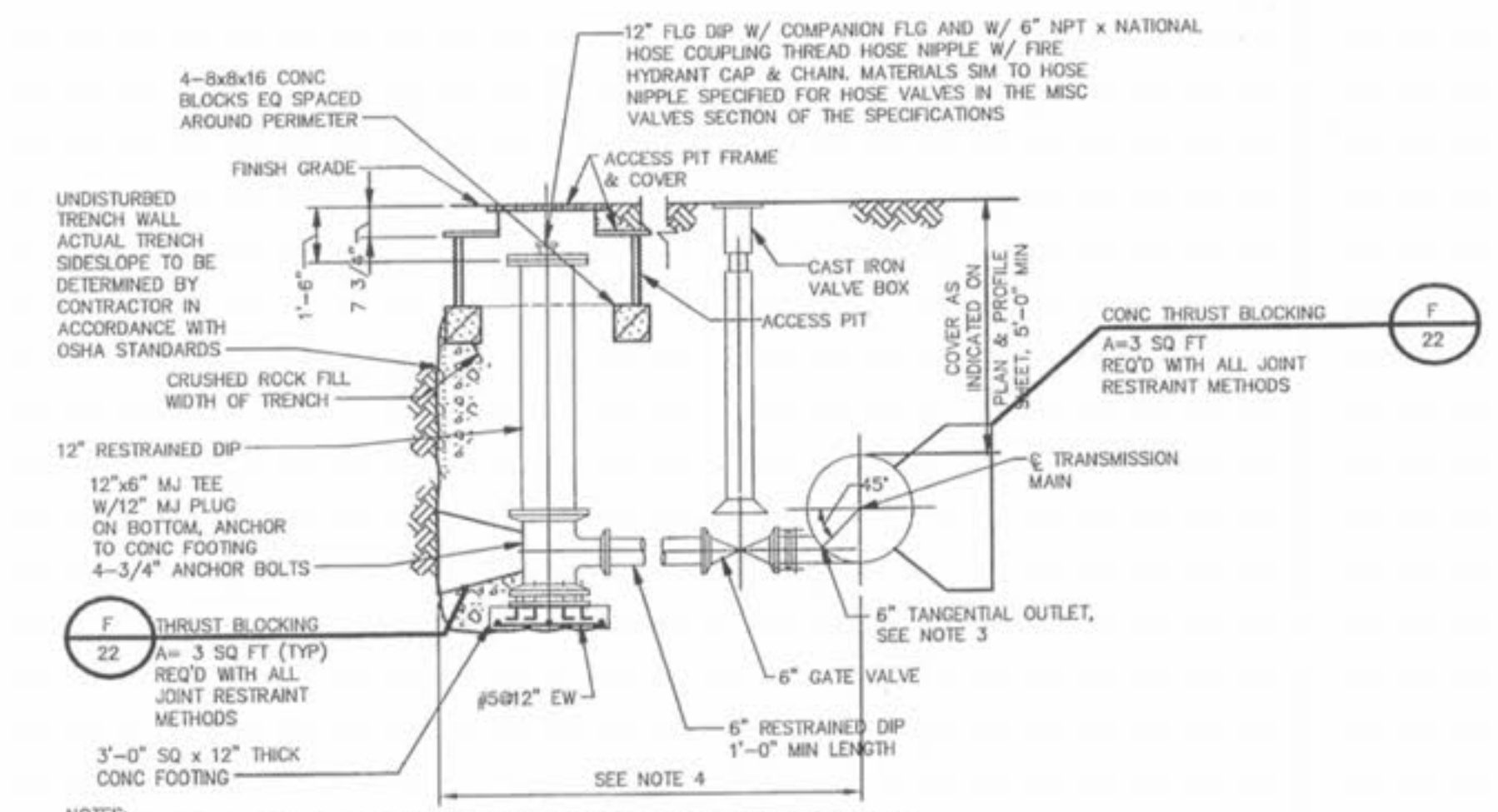
CONCRETE ENCASUREMENT
NO SCALE



ANODE INSTALLATION FOR STEEL PIPE ADAPTERS FOR PCCP ALTERNATIVE AND FOR TUNNEL LINERS
NO SCALE



MANUAL AIR RELEASE VALVE ASSEMBLY
NO SCALE



BLOWOFF FACILITY
NO SCALE

CITY OF FALLOM
COMMUNITY DEVELOPMENT
DESIGN DIVISION
OF FALLOM, MISSOURI



DISCLAIMER OF RESPONSIBILITY
I HEREBY CERTIFY THAT THE DOCUMENTS INCORPORATED IN THIS SPECIFICATION ARE THE PROPERTY OF ST. CHARLES ENGINEERING & SURVEYING, INC. AND ARE NOT TO BE REPRODUCED OR TRANSMITTED IN ANY FORM OR BY ANY MEANS, ELECTRONIC OR MECHANICAL, INCLUDING PHOTOCOPYING, RECORDING, OR BY ANY INFORMATION STORAGE AND RETRIEVAL SYSTEM, WITHOUT THE WRITTEN PERMISSION OF ST. CHARLES ENGINEERING & SURVEYING, INC. THIS DOCUMENT IS TO BE USED FOR THE PROJECT OR PROJECTS SPECIFICALLY IDENTIFIED IN THE PROJECT DESCRIPTION.

DESIGNED: _____
CHECKED: _____
DATE: _____
PROJECT NO.: _____

SHEET _____ OF _____

MAGNOLIA
WATERLINE DETAILS 2

ST. CHARLES ENGINEERING & SURVEYING, INC.
801 S. FIFTH STREET, SUITE 202
ST. CHARLES, MO 63301
TEL: (636) 947-0607 FAX: (636) 947-2448

S E I S



ORDER NO. 03-0498
DATE 12/1/03
D9