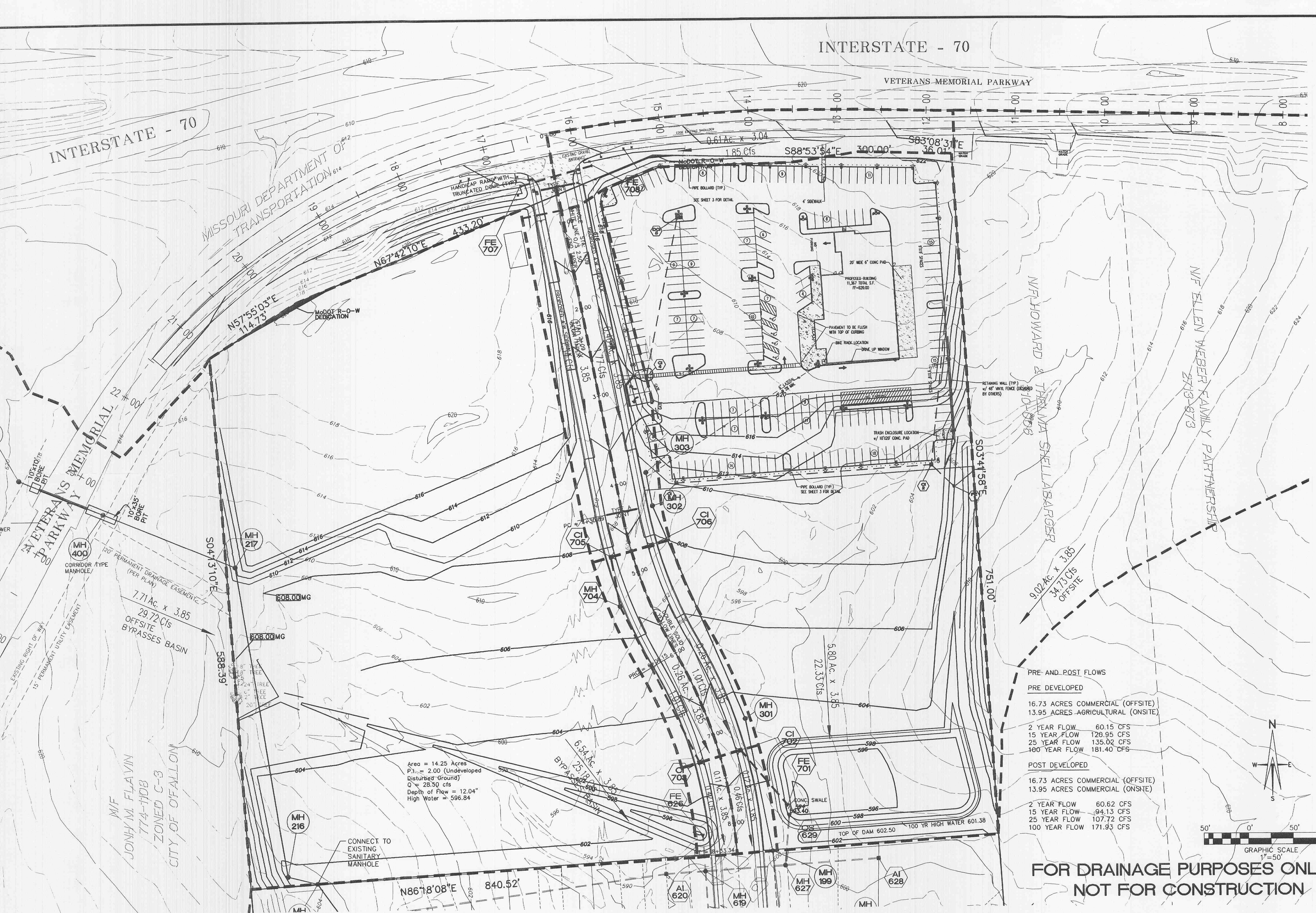


INTERSTATE - 70

VETERANS MEMORIAL PARKWAY

INTERSTATE - 70

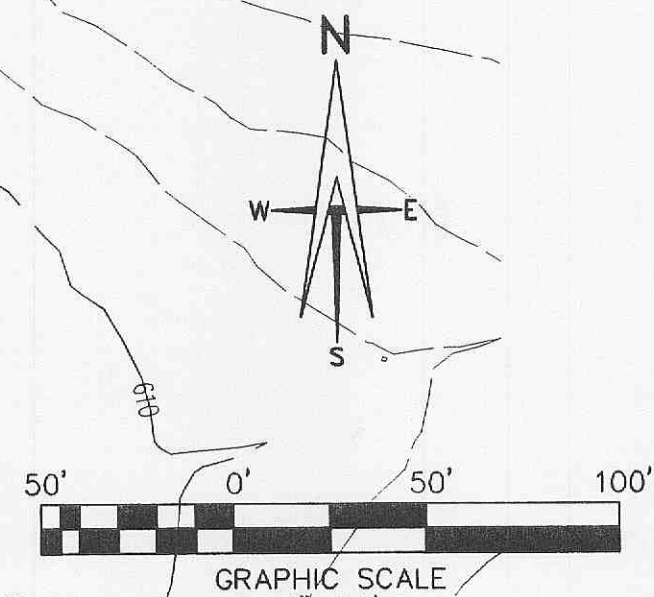
MISSOURI DEPARTMENT OF TRANSPORTATION



Area = 14.25 Acres  
 P.I. = 2.00 (Undeveloped Disturbed Ground)  
 Q = 28.50 cfs  
 Depth of Flow = 12.04"  
 High Water = 596.84

PRE AND POST FLOWS

Flow Type	Area	Flow (CFS)
PRE DEVELOPED	16.73 ACRES COMMERCIAL (OFFSITE)	60.15 CFS
	13.95 ACRES AGRICULTURAL (ONSITE)	129.95 CFS
		135.02 CFS
POST DEVELOPED	16.73 ACRES COMMERCIAL (OFFSITE)	60.62 CFS
	13.95 ACRES COMMERCIAL (ONSITE)	94.13 CFS
		107.72 CFS
		171.93 CFS

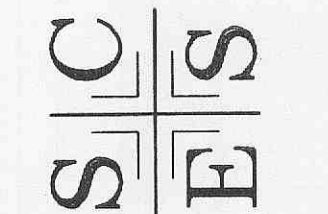


**FOR DRAINAGE PURPOSES ONLY - NOT FOR CONSTRUCTION**

10/26/04	REVISED AS PER CITY COMMENTS
05/11/05	REVISED AS PER CITY COMMENTS
08/18/05	REVISED AS PER CITY COMMENTS

**MAGNOLIA COMMERCIAL DRAINAGE AREA MAP**  
 CISELL MUELLER

ST. CHARLES ENGINEERING & SURVEYING, INC.  
 801 S. FIFTH STREET, SUITE 202  
 ST. CHARLES, MO 63301  
 TEL: (636) 947-0607 FAX: (636) 947-2448



1028-05  
 ORDER NO. 031486  
 DATE 08/26/04

P & Z FILE NO. 3603.1