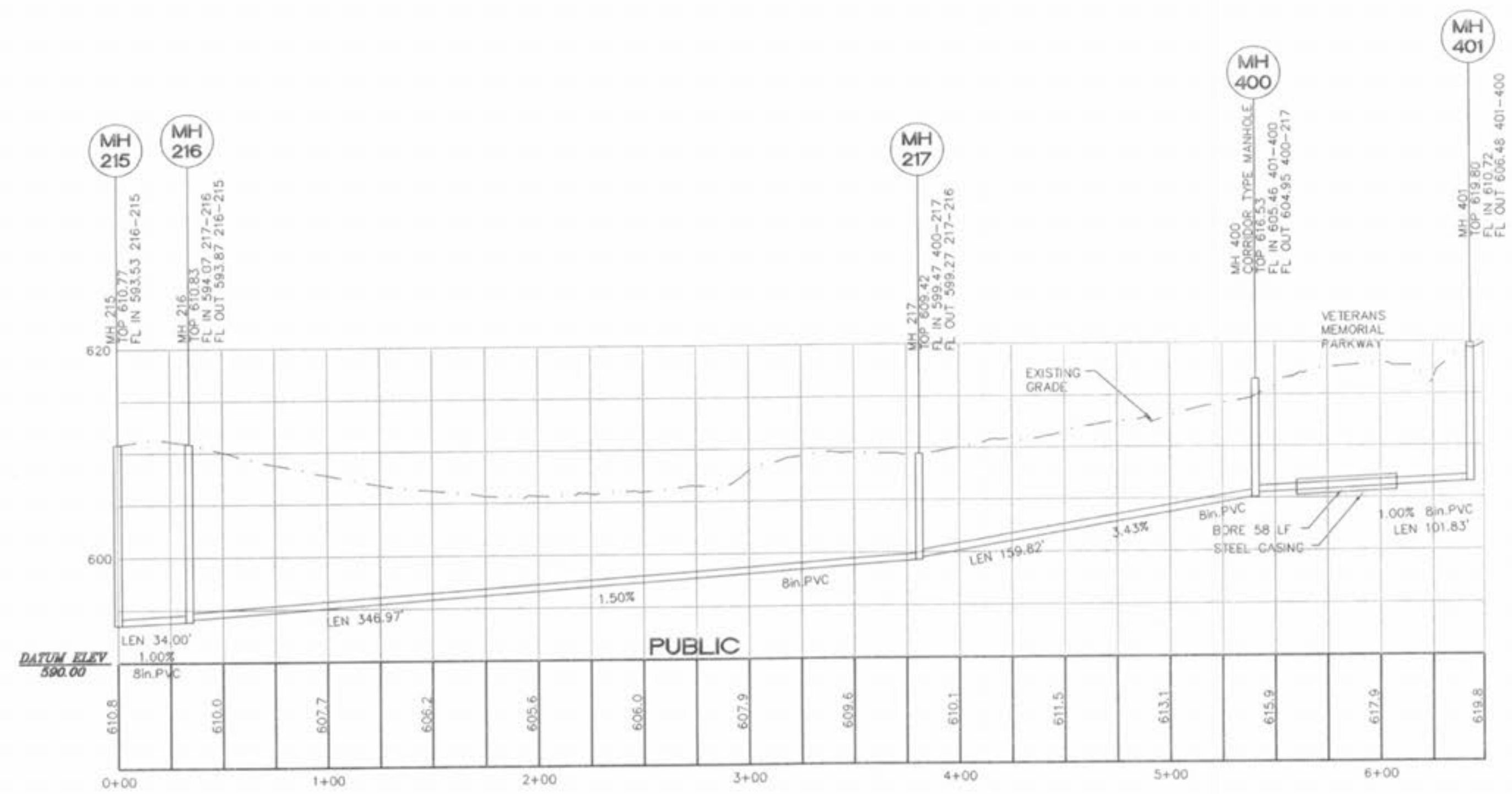
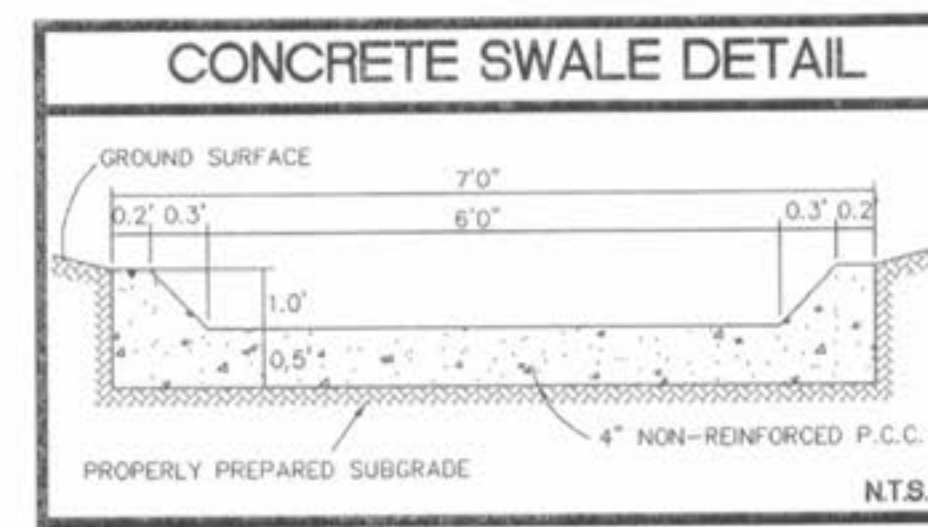


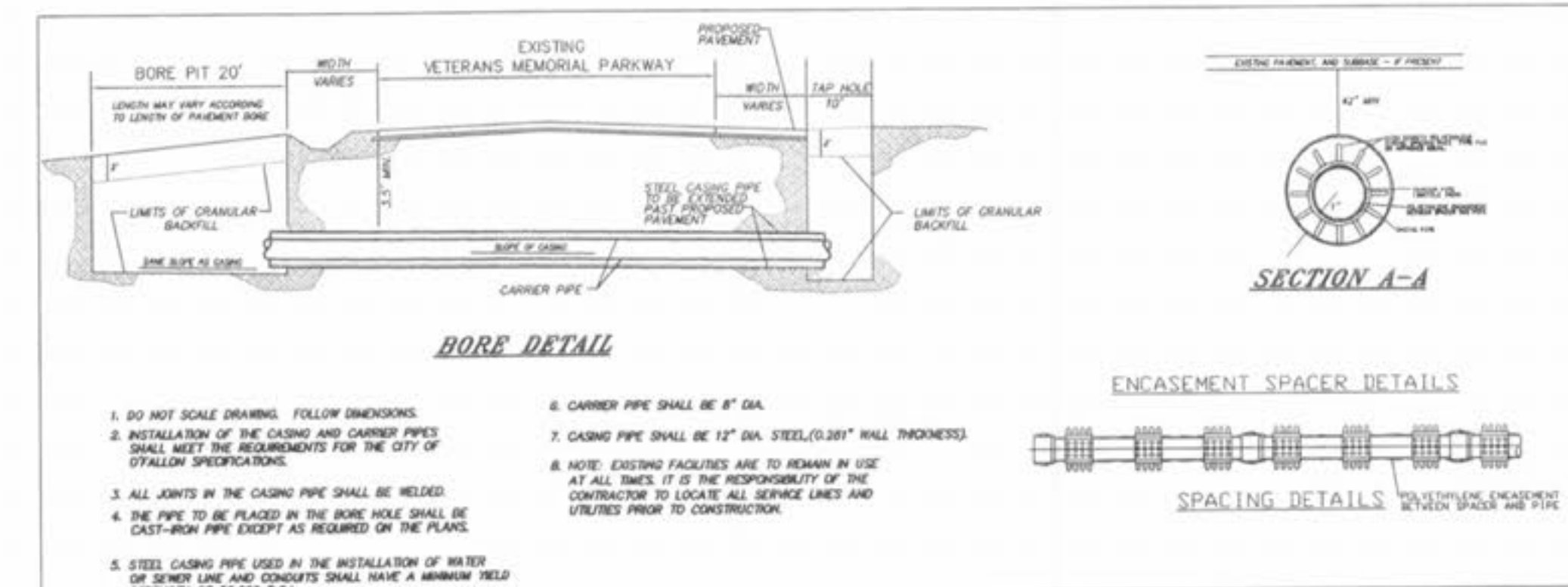
SANITARY SEWER PROFILES



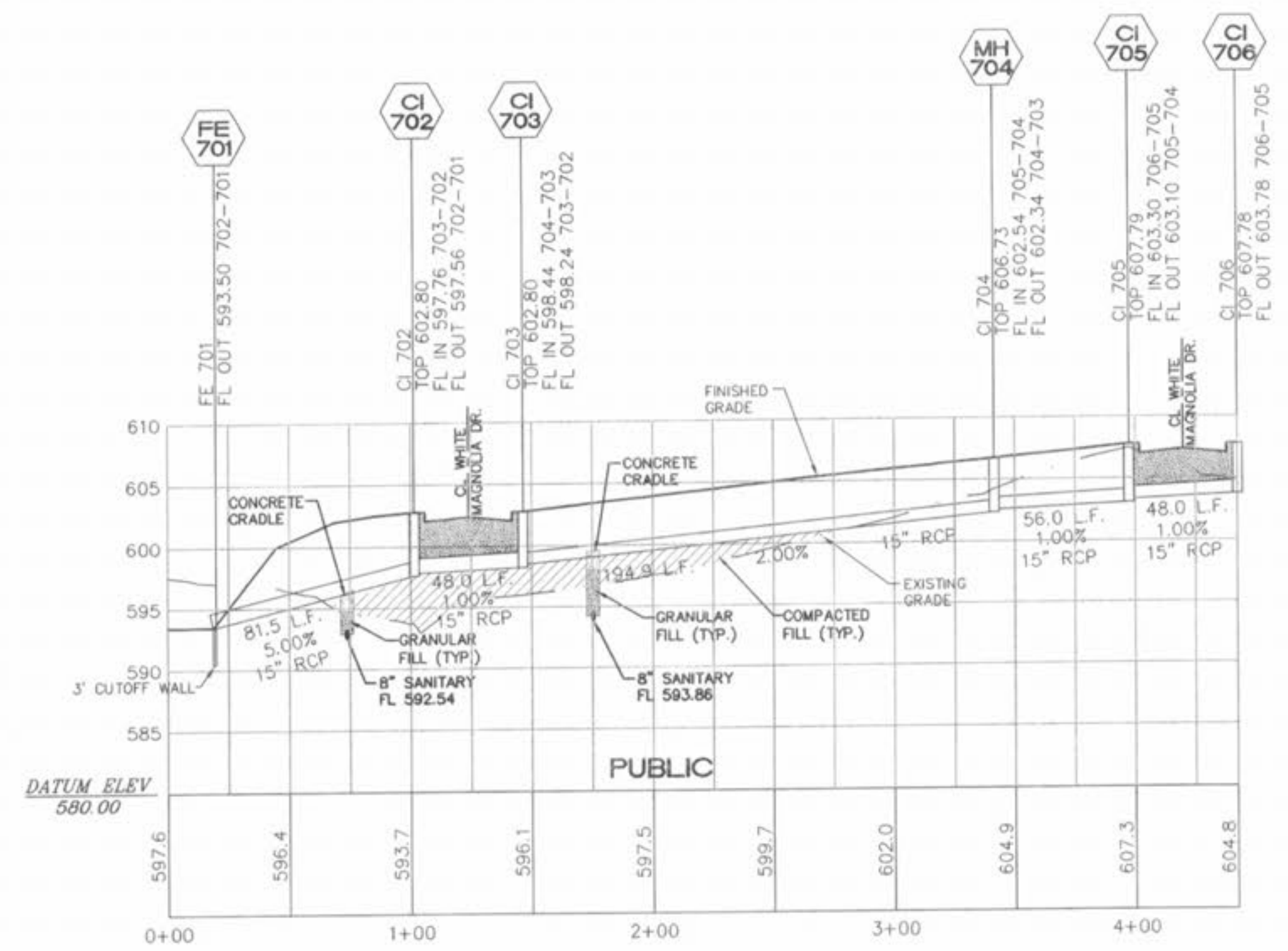
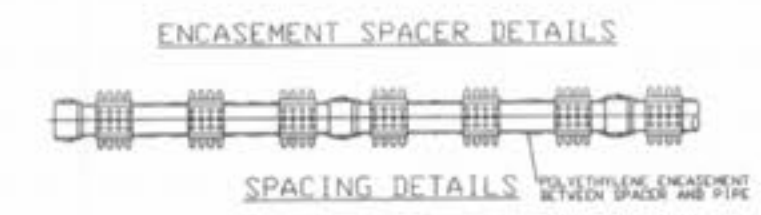
PUBLIC



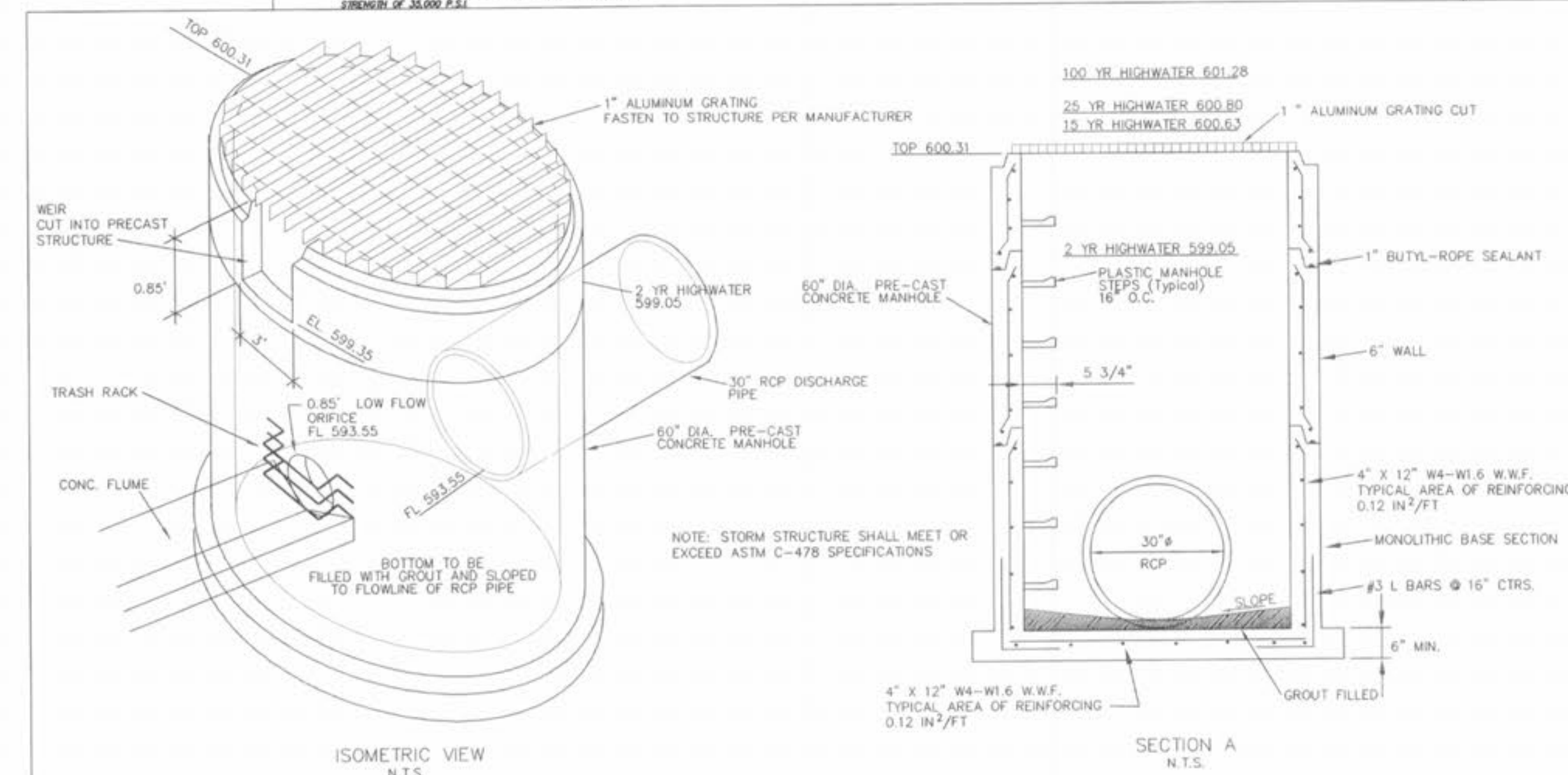
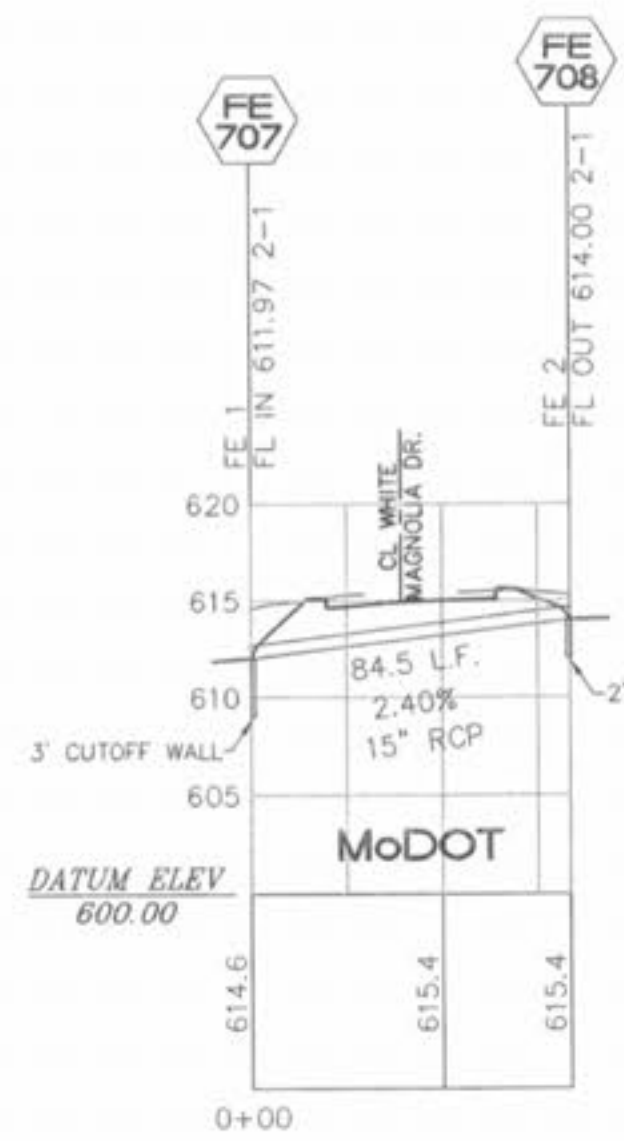
Concrete Swale
Q2 = 55.91 cfs
Depth of Flow = 11.90 inches



- DO NOT SCALE DRAWING. FOLLOW DIMENSIONS.
- INSTALLATION OF THE CASING AND CARRIER PIPES SHALL MEET THE REQUIREMENTS FOR THE CITY OF O'FALLON SPECIFICATIONS.
- ALL JOINTS IN THE CASING PIPE SHALL BE WELDED.
- THE PIPE TO BE PLACED IN THE BORE HOLE SHALL BE CAST-IRON PIPE EXCEPT AS REQUIRED ON THE PLANS.
- STEEL CASING PIPE USED IN THE INSTALLATION OF WATER OR SEWER LINE AND CONCRETE SHALL HAVE A MINIMUM YIELD STRENGTH OF 35,000 P.S.I.
- CARRIER PIPE SHALL BE 8\"/>
- CASING PIPE SHALL BE 12\"/>
- EXISTING FACILITIES ARE TO REMAIN IN USE AT ALL TIMES. IT IS THE RESPONSIBILITY OF THE CONTRACTOR TO LOCATE ALL SERVICE LINES AND UTILITIES PRIOR TO CONSTRUCTION.



STORM SEWER PROFILES



DETENTION STRUCTURE DETAIL

P & Z FILE NO. 3603.1

10/26/04	REVISED AS PER CITY COMMENTS
12/02/04	REVISED SANITARY
05/17/05	REVISED DETENTION
08/19/05	REVISED AS PER CITY COMMENTS

MAGNOLIA COMMERCIAL
SANITARY AND STORM PROFILES
CISSELL MUELLER

ST. CHARLES ENGINEERING & SURVEYING, INC.
801 S. FIFTH STREET, SUITE 202
ST. CHARLES, MO 63301
TEL: (636) 947-0607 FAX: (636) 947-2448



ORDER NO. 031486
DATE 05/26/04