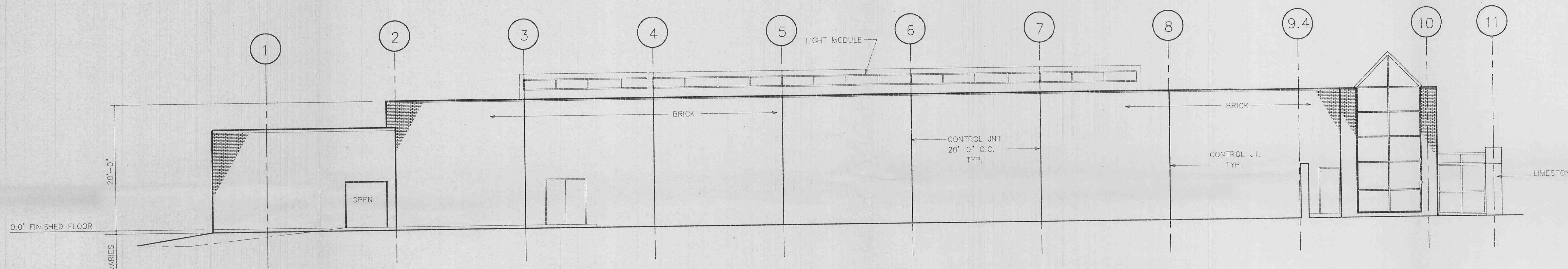
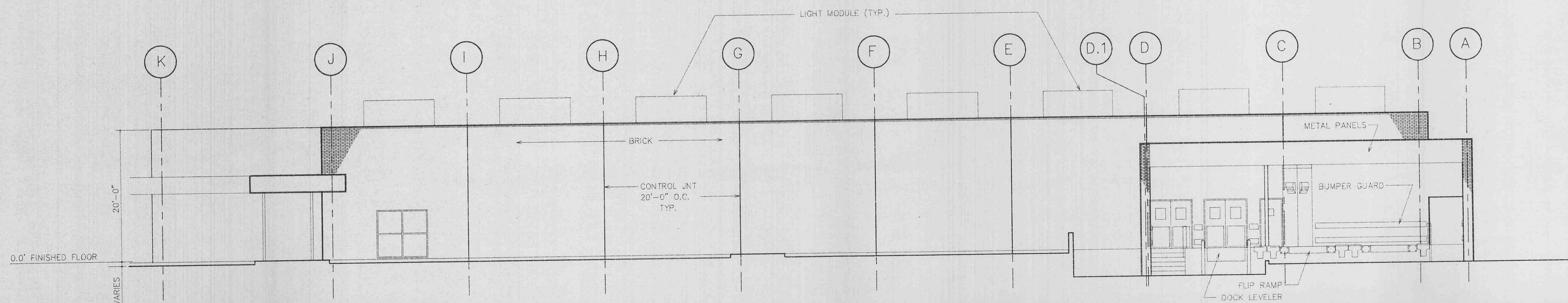


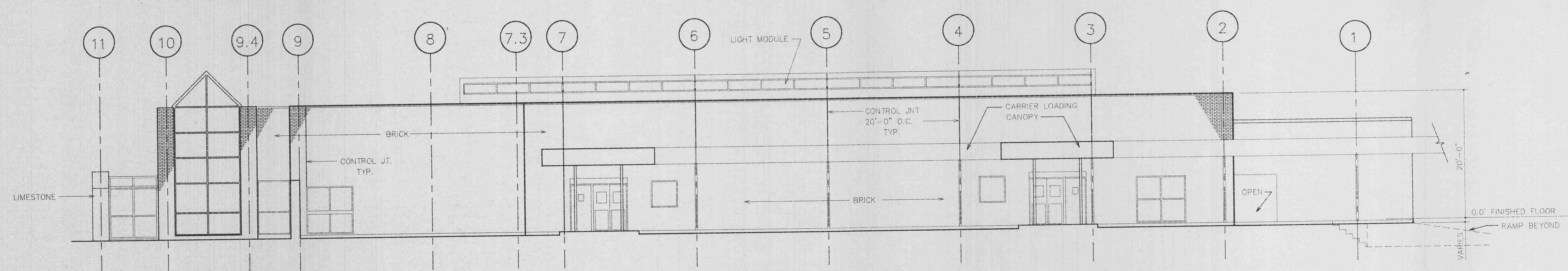
1 SOUTH ELEVATION
A5J 1/8" = 1'-0"



2 WEST ELEVATION
A5J 1/8" = 1'-0"



3 NORTH ELEVATION
A5J 1/8" = 1'-0"



4 EAST ELEVATION
A5J 1/8" = 1'-0"

O'FALLON, MISSOURI

MARTELL & ASSOCIATES, P.A.
Engineers - Architects - Planners
1333 Massachusetts, Suite 100
Overland Park, Kansas 66102
913-287-1771

THE HOLLIS + MILLER GROUP
Architects & Engineers
309 S.W. Market Street
Lee's Summit, Missouri 64083
816-525-5600

United States Postal Service
Facilities Department
Kit of Parts

Facilities Service Center
6800 West 64th Street
Overland Park, KS 66202-4171

O'FALLON, MISSOURI 63306

ELEVATIONS

Number: 8959
Date: 11/28/89
Revision: 1
Drawn By: [Blank]
Checked By: [Blank]

UNITED STATES POST OFFICE