

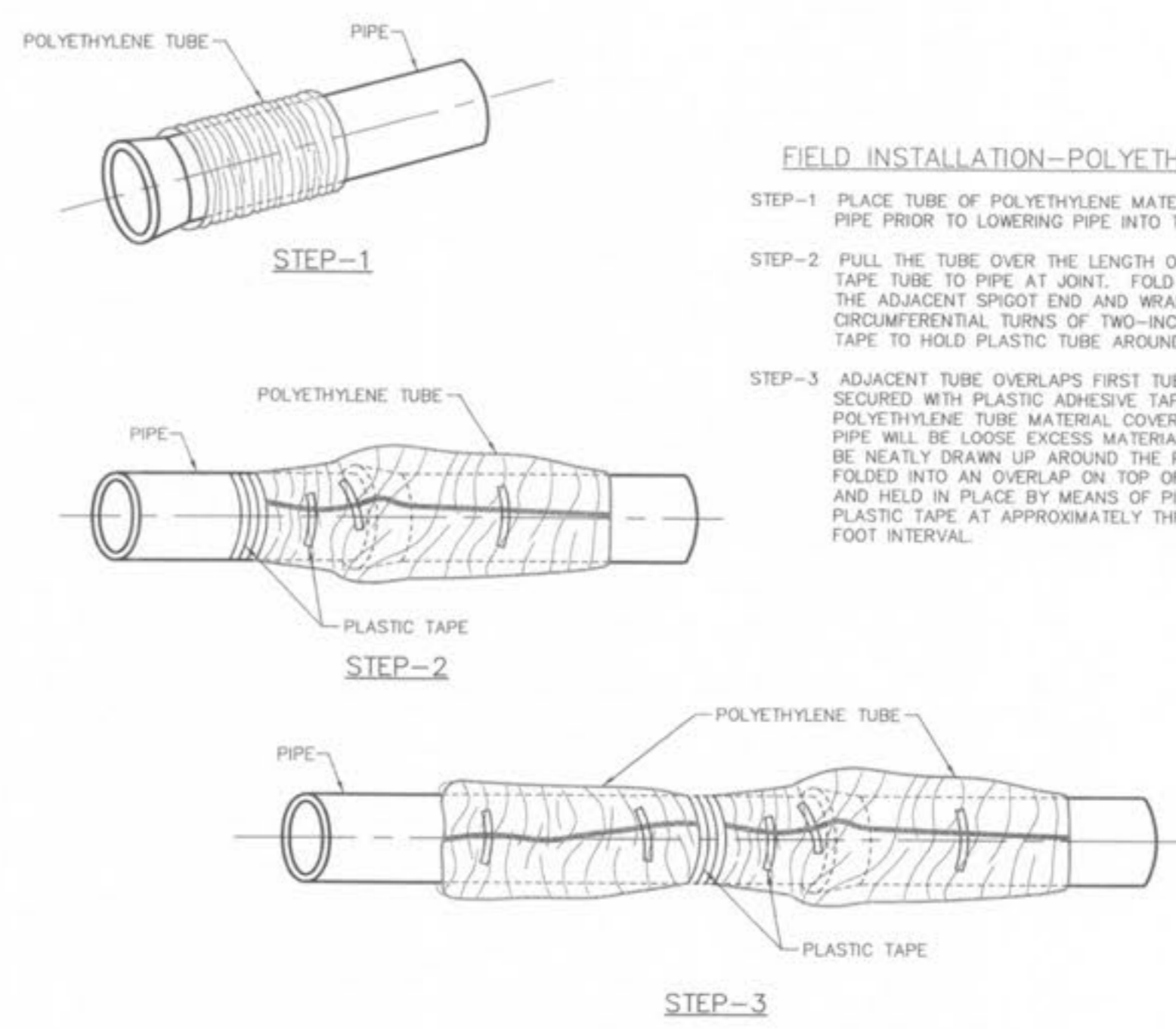
FIELD WRAP INSTALLATION-FLANGED CONNECTION
NTS

NOTE: ALL JOINT-WRAP TAPE AND PRIMER SHALL BE IN ACCORDANCE WITH AWWA STANDARD C-209, TYPE II. TAPE & PRIMER SHALL BE COMPATIBLE WITH EACH OTHER.

STEP-1 THE JOINT SHALL BE THOROUGHLY CLEANED OF ALL FOREIGN MATTER. THE OUTSIDE SURFACE OF FLANGES, BOLTS, NUTS, WASHERS, AND VALVE BODY SHALL BE PRIMED WITH APPROVED MASTIC. BEGIN WRAPPING THE JOINT AT AREA (1) BY TAKING A PIECE OF TAPE IN SUFFICIENT WIDTH TO OVERLAP THE EDGES OF THE FLANGES AND PIECES LONG ENOUGH TO EQUAL THE CIRCUMFERENCE OF THE PIPE PLUS PROVIDE A 6-INCH OVERLAP. AT AREAS (2) AND (3) ADJACENT TO PIPE AND/OR VALVE, WRAP JOINT TAPE THE CIRCUMFERENCE OF THE PIPE AND/OR VALVE PLUS PROVIDE A 6-INCH OVERLAP.

STEP-2 AREA (4) SHALL BE A DOUBLE LAYER OF JOINT-WRAP TAPE SUFFICIENTLY OVERLAPPING AREAS (2) AND (3) BY A MINIMUM OF 1-INCH. THIS JOINT-WRAP TAPE SHALL BE A MAXIMUM OF 12-INCHES IN WIDTH. IF SUCCESSIVE SPIRAL WRAPS ARE USED, A MINIMUM OF 1-INCH OVERLAP SHALL BE PROVIDED.

STEP-3 THE LOOSE ENDS OF THE JOINT-WRAP TAPE IN AREA (4) SHALL BE TUCKED INWARD AND DOWNWARD TO AREA (5) TO PROVIDE TAPE BONDING WITH AREAS (2) AND (3). PLEASE NOTE THAT THIS JOINT-WRAP TAPE SHOULD HAVE SLACK AND NOT FIT TOO TIGHTLY AROUND THE FLANGE BOLTS AND NUTS. IF JOINT-WRAP TAPE IS TOO TIGHT, THE DANGER OF BREAKING THE JOINT TAPE BY SOIL PRESSURE AFTER TRENCH IS BACKFILLED EXISTS. A FINAL WRAP OF 6-INCH WIDE JOINT-WRAP TAPE IS NOW PLACED AT AREA (6) IN PIECES OF ENOUGH LENGTH TO EQUAL THE CIRCUMFERENCE OF THE SURFACE AND PROVIDE A 6-INCH OVERLAP.



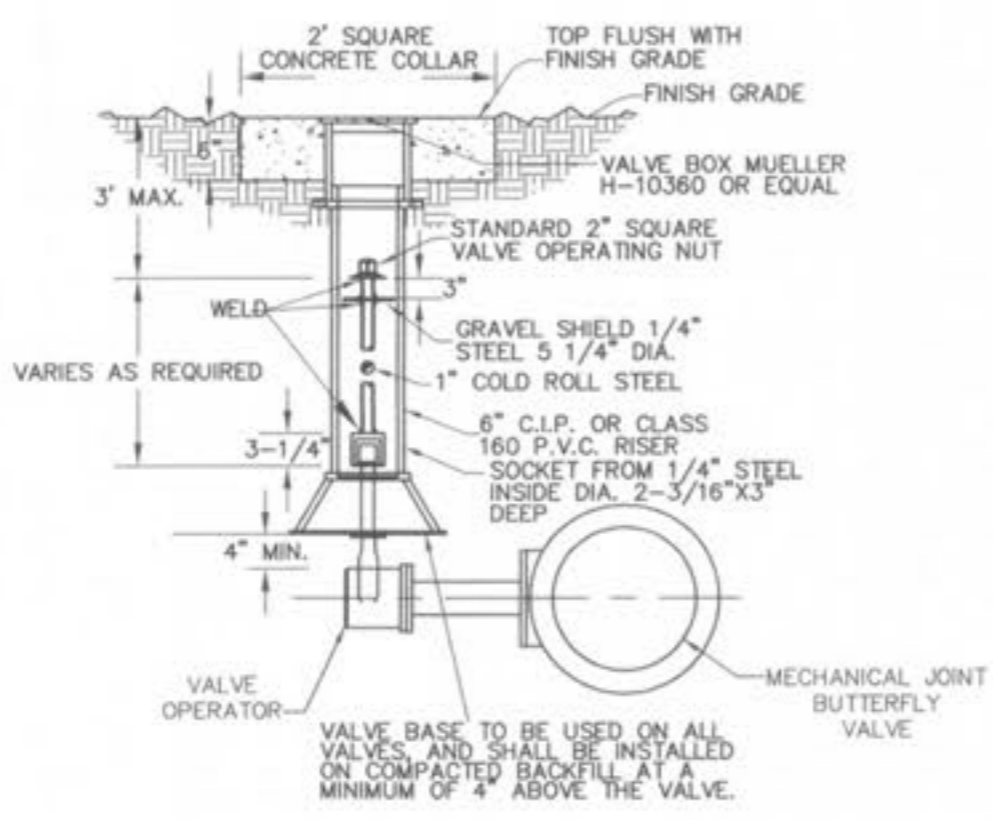
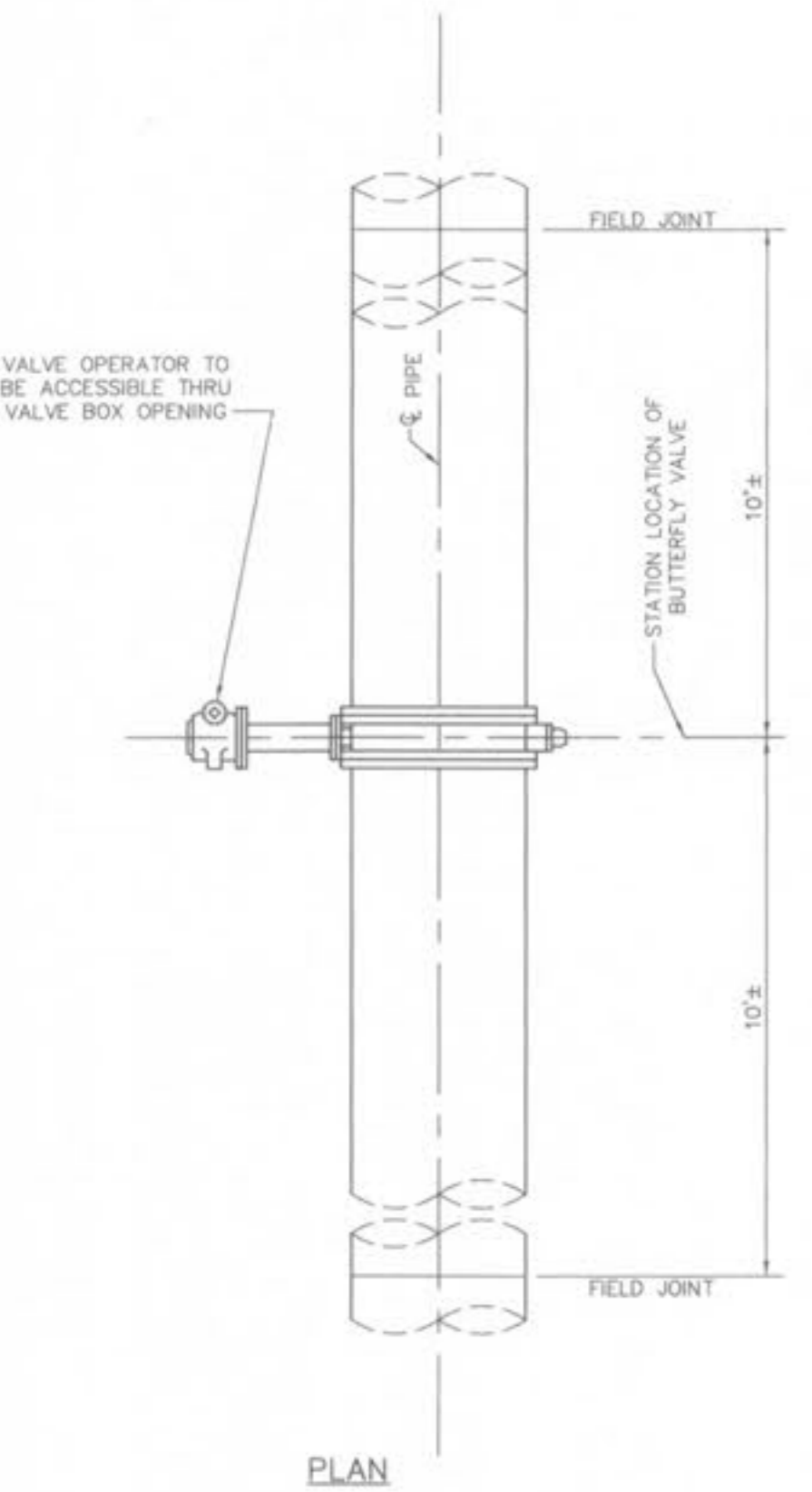
FIELD INSTALLATION-POLYETHYLENE WRAP FOR DUCTILE IRON PIPE
NTS

FIELD INSTALLATION-POLYETHYLENE WRAP

STEP-1 PLACE TUBE OF POLYETHYLENE MATERIAL AROUND PIPE PRIOR TO LOWERING PIPE INTO TRENCH.

STEP-2 PULL THE TUBE OVER THE LENGTH OF THE PIPE. TAPE TUBE TO PIPE AT JOINT. FOLD MATERIAL AROUND THE ADJACENT SPIGOT END AND WRAP WITH THREE CIRCUMFERENTIAL TURNS OF TWO-INCH WIDE PLASTIC TAPE TO HOLD PLASTIC TUBE AROUND SPIGOT END.

STEP-3 ADJACENT TUBE OVERLAPS FIRST TUBE AND IS SECURED WITH PLASTIC ADHESIVE TAPE. THE POLYETHYLENE TUBE MATERIAL COVERING THE PIPE WILL BE LOOSE EXCESS MATERIAL AND SHOULD BE NEATLY DRAWN UP AROUND THE PIPE BARREL. FOLDED INTO AN OVERLAP ON TOP OF THE PIPE AND HELD IN PLACE BY MEANS OF PIECES OF THE PLASTIC TAPE AT APPROXIMATELY THREE TO FIVE FOOT INTERVAL.



BUTTERFLY VALVE ASSEMBLY
NTS

VALVE SIZE	STATION	VALVE SIZE	STATION	VALVE SIZE	STATION
30"	106+14.0	24"	48+58.0	20"	20+58.0
30"	127+26.0	24"	56+43.0	20"	34+60.0
		24"	65+20.0	20"	39+32.8
		24"	77+00.0		
		24"	78+25.0		
		24"	92+78.5		

MAIN STREET TRANSMISSION MAIN

DETAILS

CITY OF O'FALLON
COMMUNITY DEVELOPMENT
DESIGN DIVISION
O'FALLON, MISSOURI



DISCLAIMER OF RESPONSIBILITY
I HEREBY SPECIFY THAT THE DOCUMENTS INTENDED TO BE APPROVED BY MY SEAL ARE LIMITED TO THIS SHEET, AND I HEREBY DISCLAIM ANY RESPONSIBILITY FOR ALL OTHER DRAWINGS, SPECIFICATIONS, ESTIMATES, REPORTS OR OTHER DOCUMENTS OF INSTRUMENTS RELATING TO OR INTENDED TO BE USED FOR ANY PART OR PARTS OF THE ARCHITECTURAL OR ENGINEERING PROJECT OR SURVEY.

SEAL

DESIGNED: ERB
CHECKED: CEM
DATE: 12/05/02
PROJECT NO.: 01-067

SHEET
26 OF 29