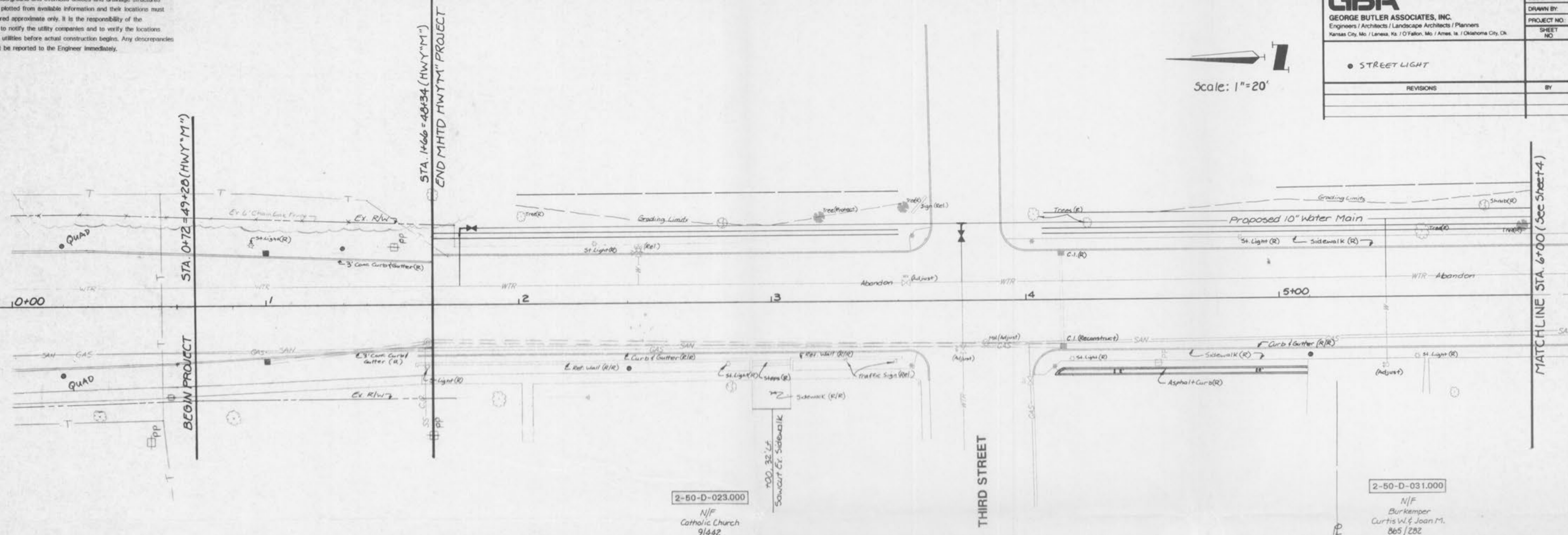
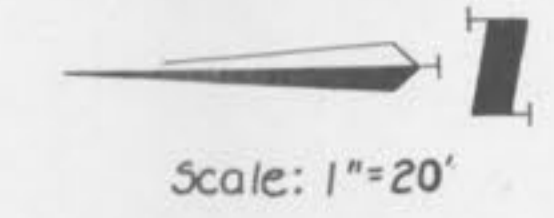


Note: Existing underground and overhead utilities and drainage structures have been plotted from available information and their locations must be considered approximate only. It is the responsibility of the contractor to notify the utility companies and to verify the locations of existing utilities before actual construction begins. Any discrepancies noted must be reported to the Engineer immediately.

**GBA**  
 GEORGE BUTLER ASSOCIATES, INC.  
 Engineers / Architects / Landscape Architects / Planners  
 Kansas City, Mo. / Lenexa, Ks. / O'Fallon, Mo. / Ames, Ia. / Oklahoma City, Ok.

DATE:	
DESIGN BY:	
DRAWN BY:	
PROJECT NO.:	
SHEET NO.:	TOTAL SHEETS:
REVISIONS:	BY DATE:

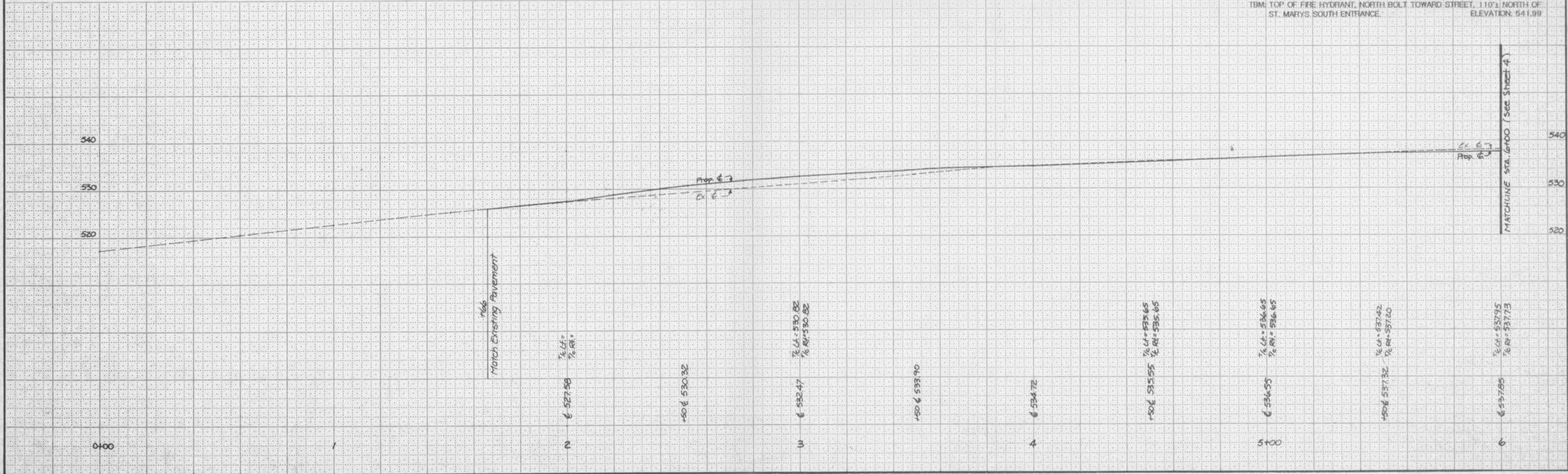
● STREET LIGHT



2-50-D-023.000  
 N/F  
 Catholic Church  
 9/442

2-50-D-031.000  
 N/F  
 Burkemper  
 Curtis W & Joan M.  
 865 / 282

TBM: TOP OF FIRE HYDRANT, NORTH BGLT TOWARD STREET, 110' NORTH OF ST. MARYS SOUTH ENTRANCE. ELEVATION: 541.98



MATCHLINE STA. 6+00 (See Sheet 4)