

Note: Existing underground and overhead utilities and drainage structures have been plotted from available information and their locations must be considered approximate only. It is the responsibility of the contractor to notify the utility companies and to verify the locations of existing utilities before actual construction begins. Any discrepancies noted must be reported to the Engineer immediately.

N/F  
City of O'Fallon  
1309/1501  
2-56-B-011.000

N/F  
City of O'Fallon  
1650/1823  
2-56-B-013.000

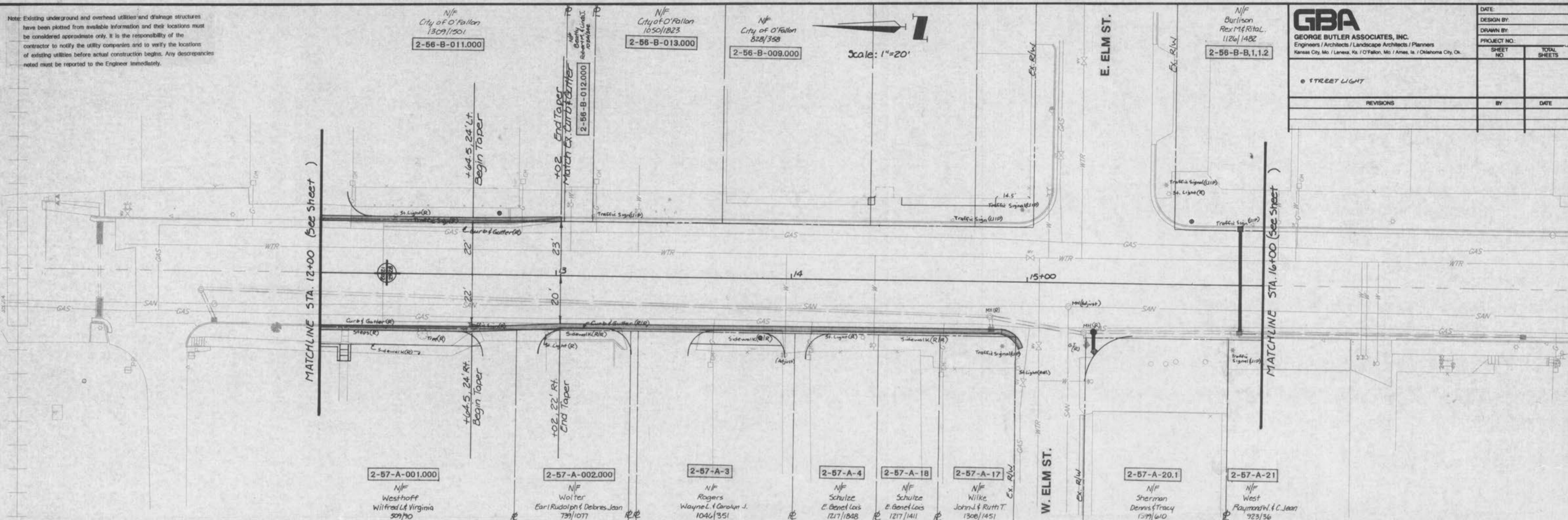
N/F  
City of O'Fallon  
828/358  
2-56-B-009.000

N/F  
Burlison  
Rex M & Rita L.  
1126/1482  
2-56-B-B,1,1,2

**GBA**  
GEORGE BUTLER ASSOCIATES, INC.  
Engineers / Architects / Landscape Architects / Planners  
Kansas City, Mo / Lenexa, Ka / O'Fallon, Mo / Ames, Ia / Oklahoma City, Ok.

DATE:	
DESIGN BY:	
DRAWN BY:	
PROJECT NO.:	
SHEET NO.	TOTAL SHEETS
REVISIONS	BY DATE

Scale: 1"=20'



B.M. USGS BENCHMARK 40' ± EAST OF THE CENTERLINE OF N. MAIN ST. (HWY M), 58' ± NORTH OF THE CENTERLINE OF THE RAILROAD TRACKS AND 3.4' SOUTH OF A 6' CHAIN LINK FENCE. ELEVATION: 543.04'

T.B.M. TOP "D" @ NORTHEAST CORNER OF JOE'S AUTOMOTIVE BUILDING @ NORTHEAST CORNER OF CONCRETE STOOP. ELEVATION: 552.76'

