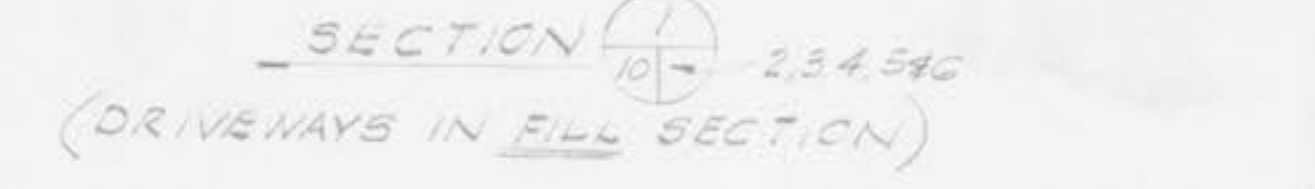
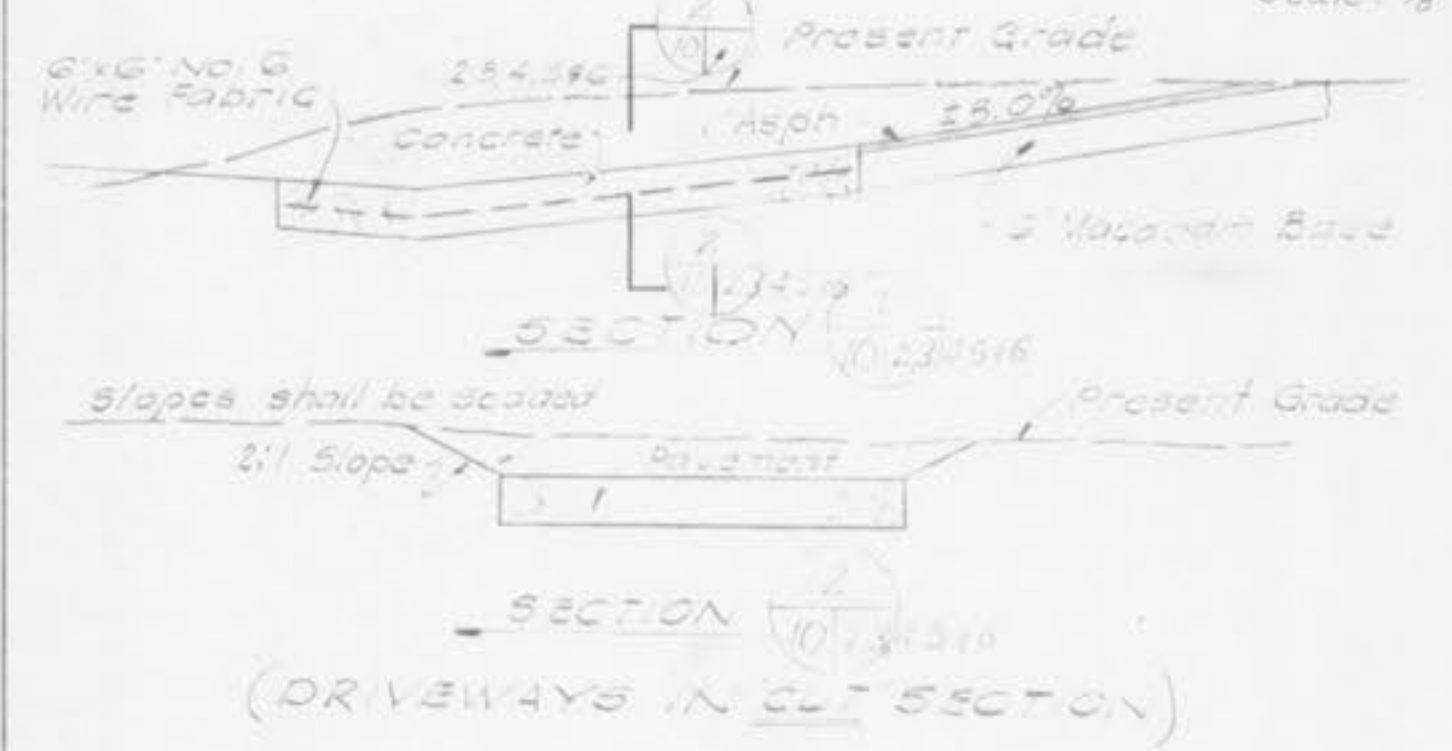
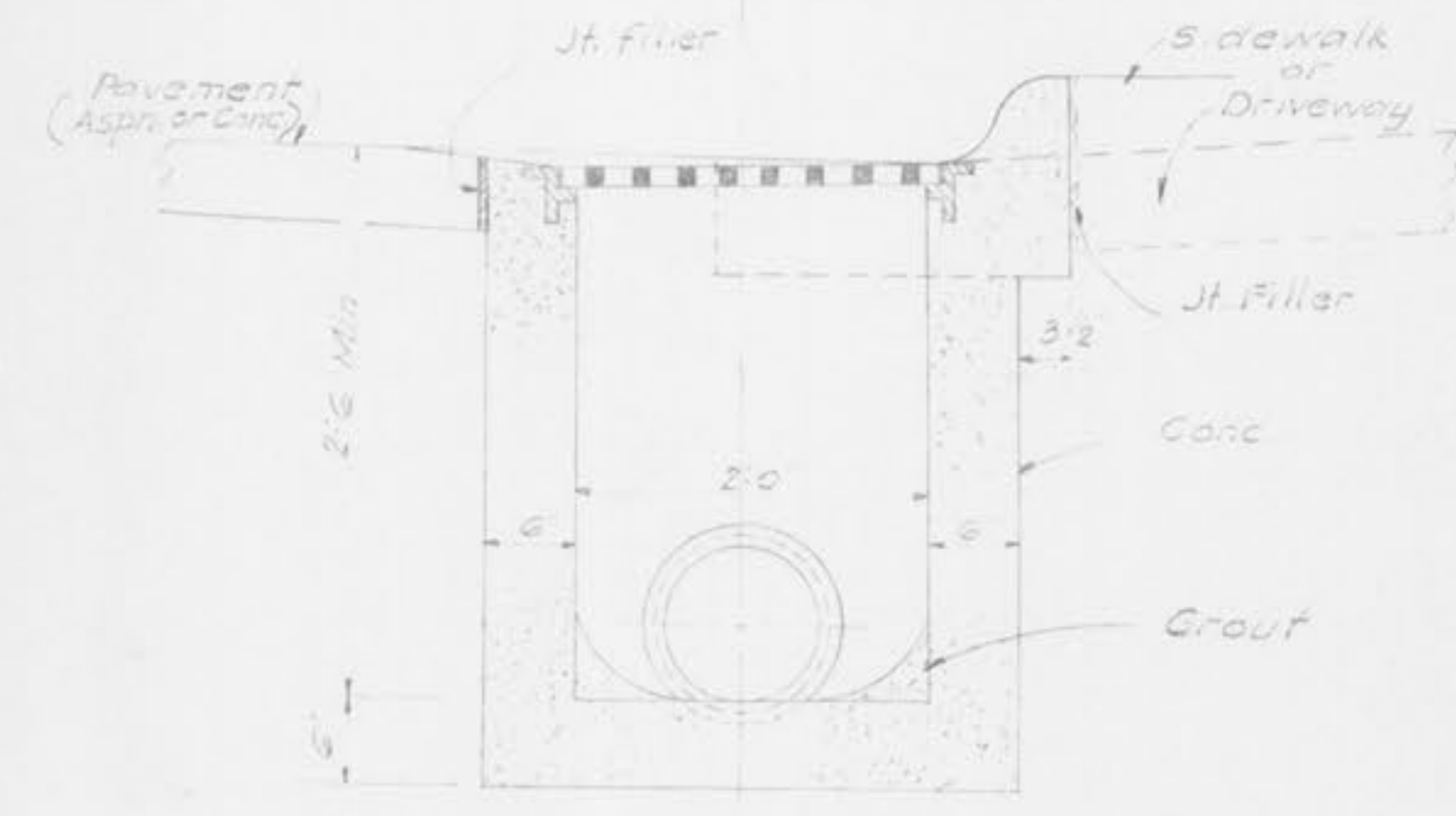
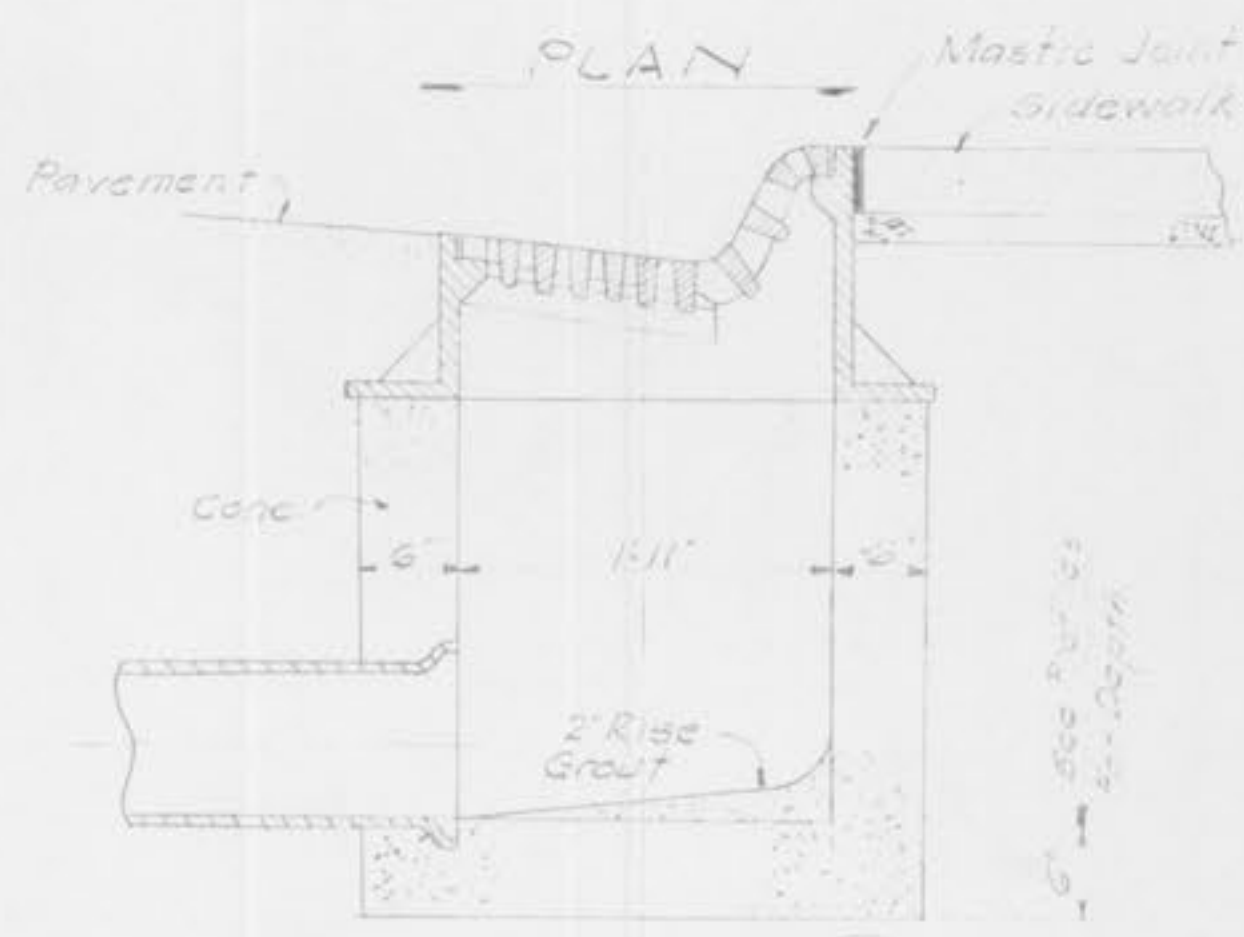
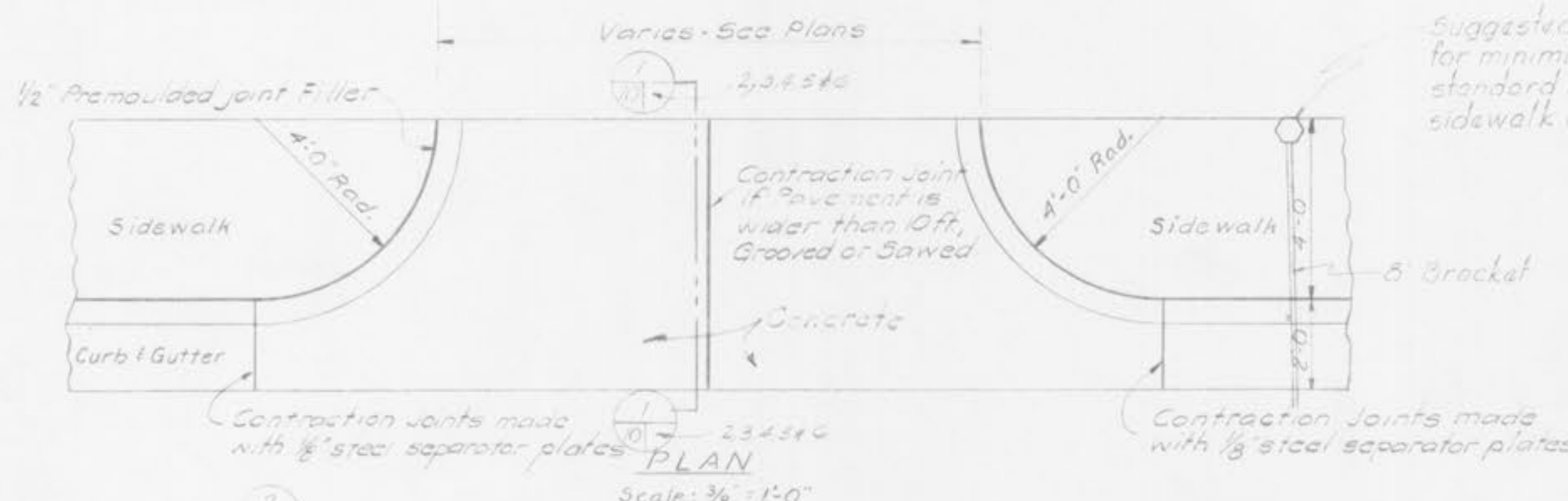
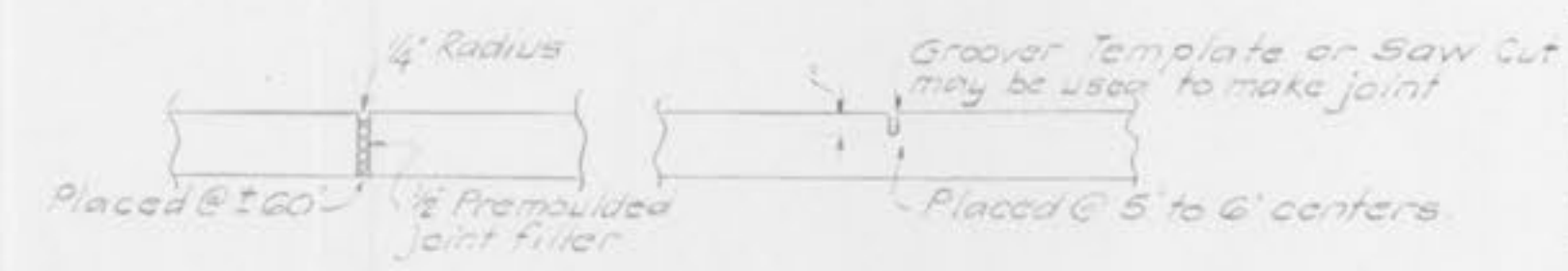
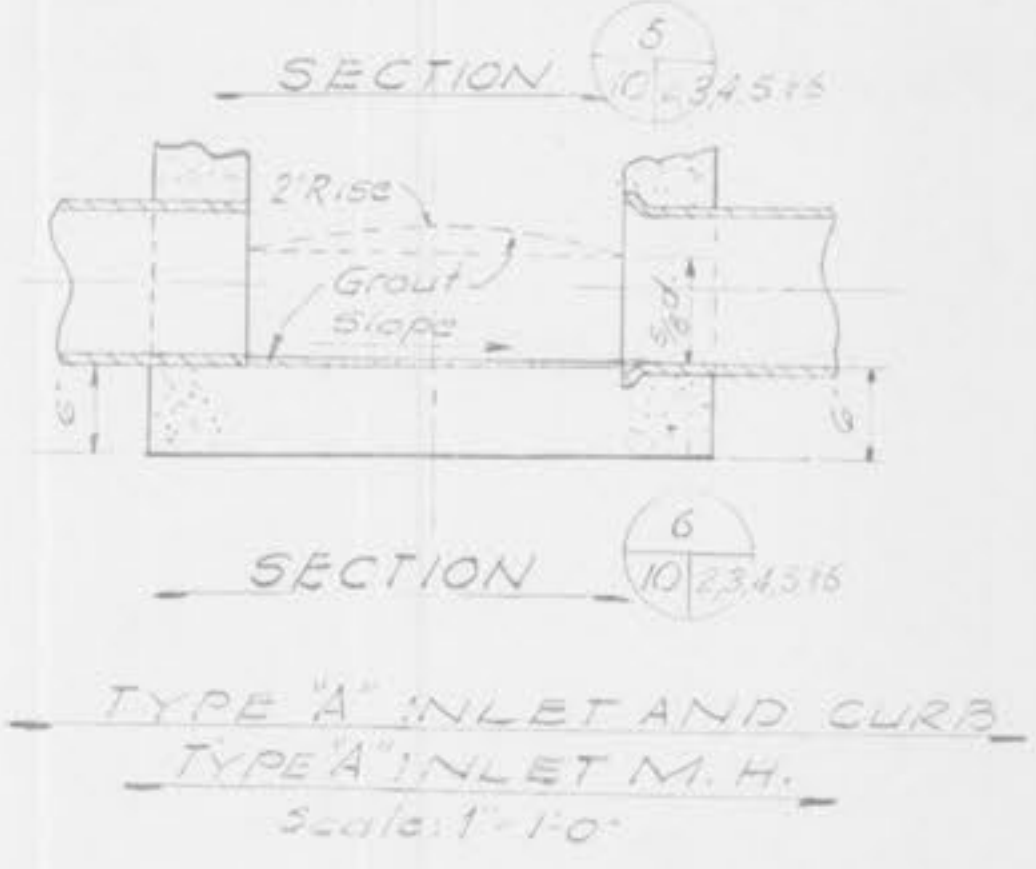
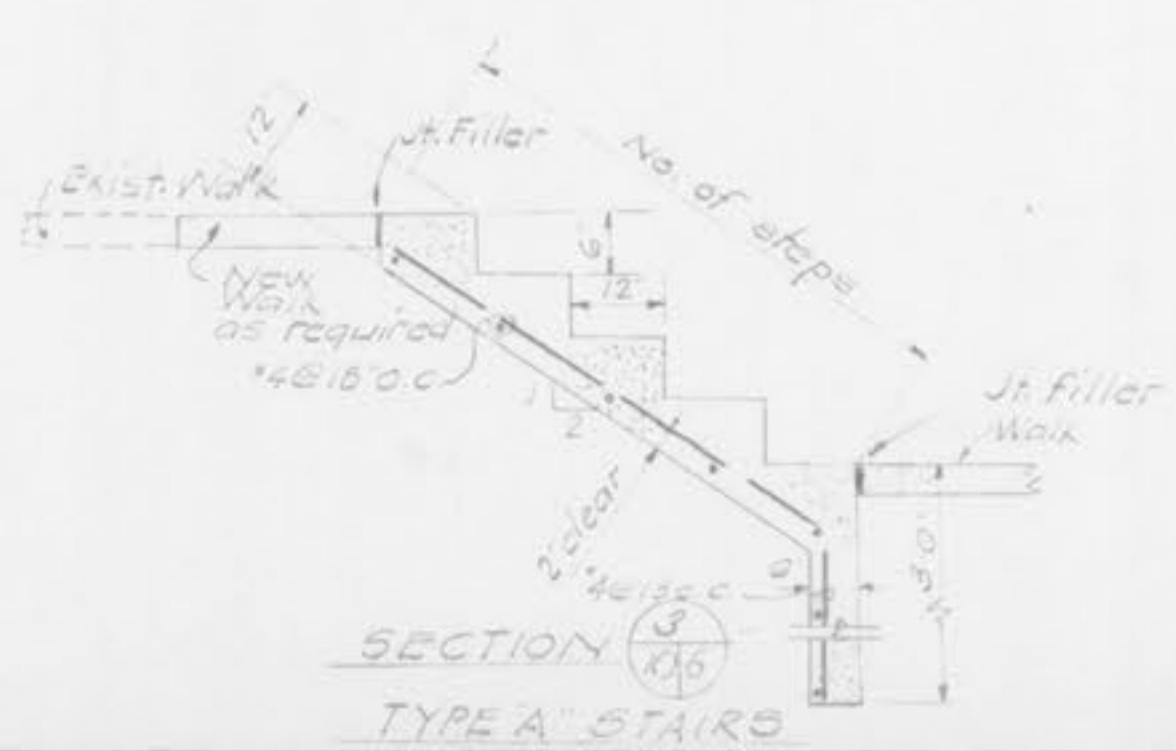
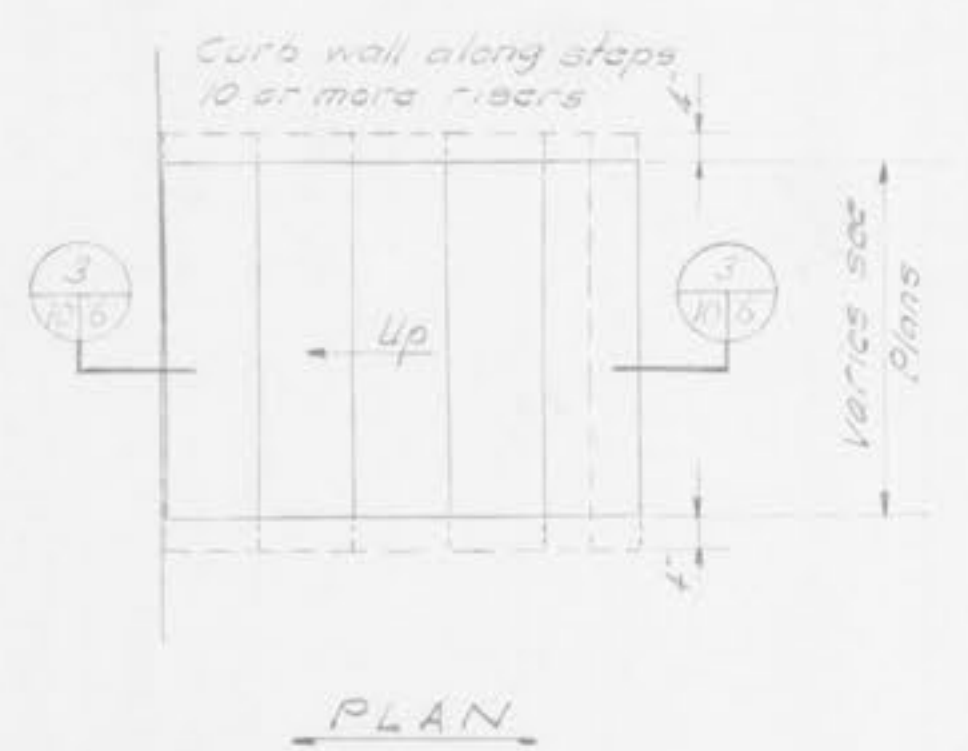


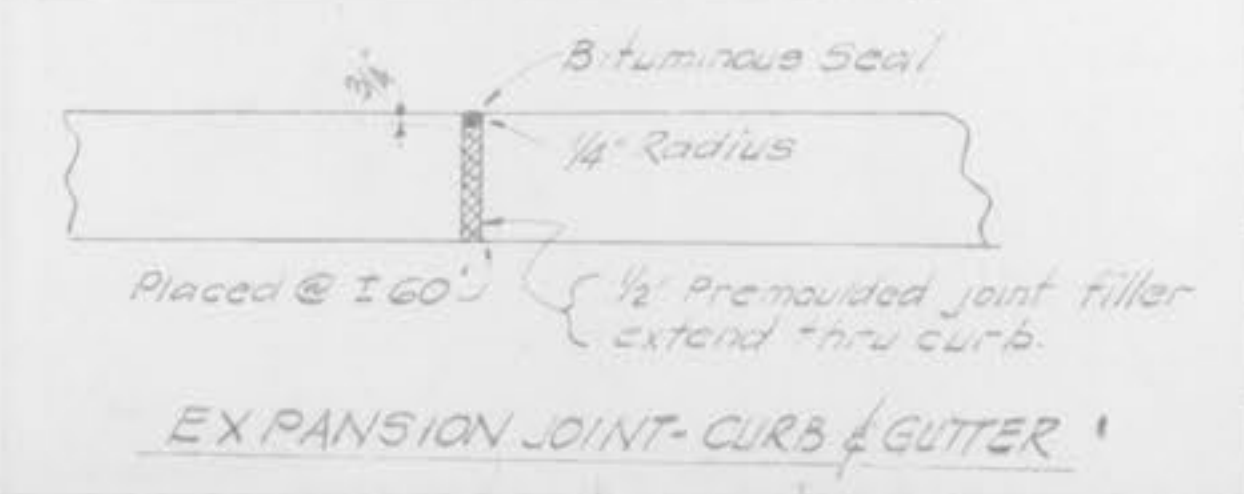
Suggested location for street light standard to make for minimum blocking of sidewalk. (Normal installation of standard is 2' behind curb which would be in middle of sidewalk and highly undesirable.)  
Not In Scale



**TYP DRIVEWAY INTERSECTIONS**



**JOINTS IN CONG. SIDEWALK**



NO.	DATE	DESCRIPTION	BY	CHKD.
REVISIONS				
+ RUSSELL & AXON + INC. + CONSULTING ENGINEERS DAYTONA BEACH, FLA. ST. LOUIS, MO.				
<b>O'FALLON, MO.</b>				
<b>DETAILS</b>				
DESIGNED BY L.F.K.	FILE NO. 6410-10-10	SEAL		
DRAWN BY R.G.R.H.	SHEET 10			
CHECKED BY P.M.	OF 11 SHEETS			
DATE April, 1962	SCALE: As Noted			