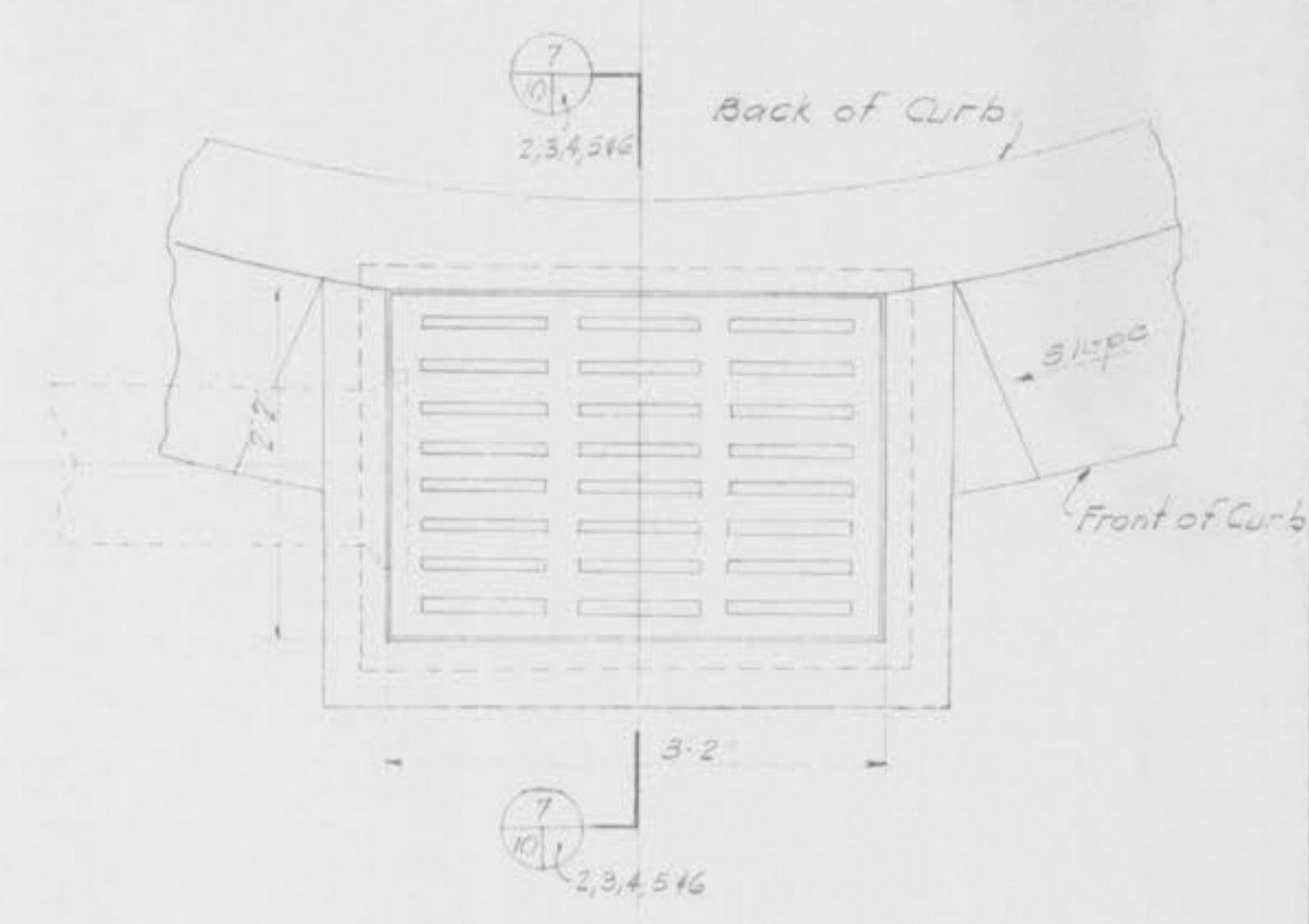
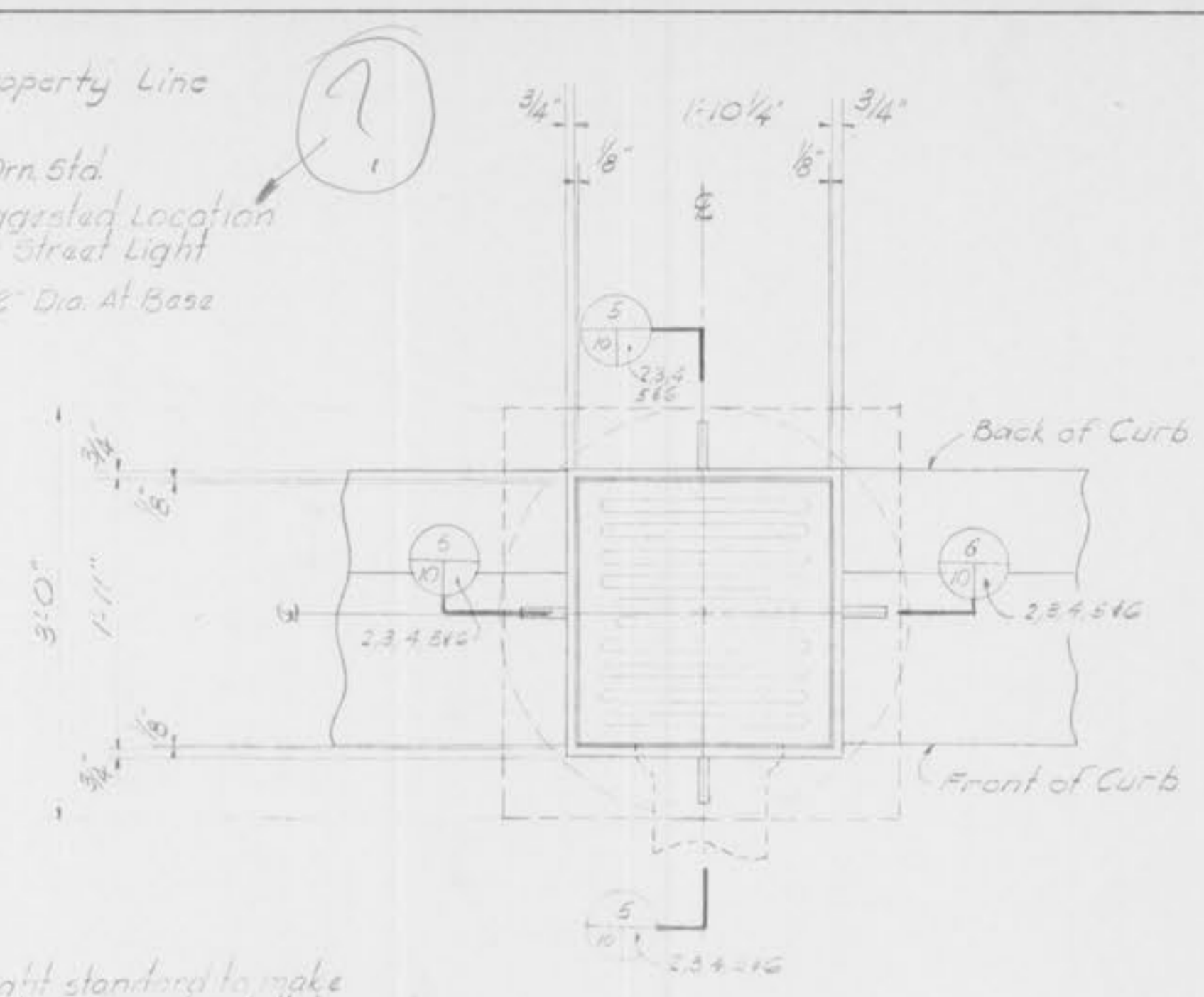
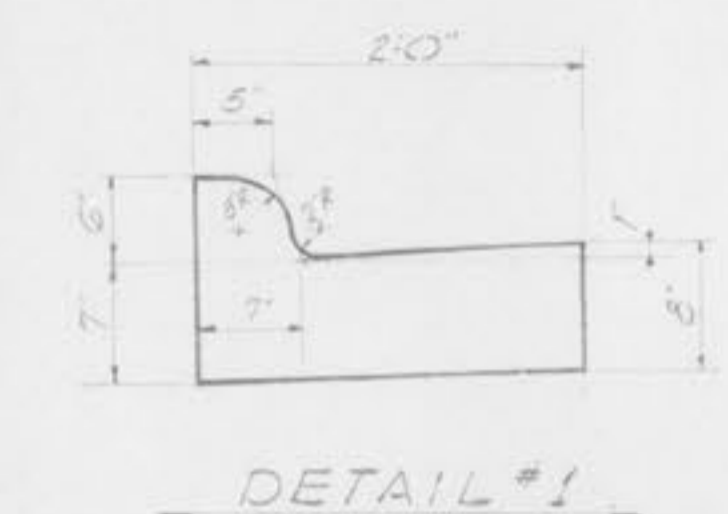
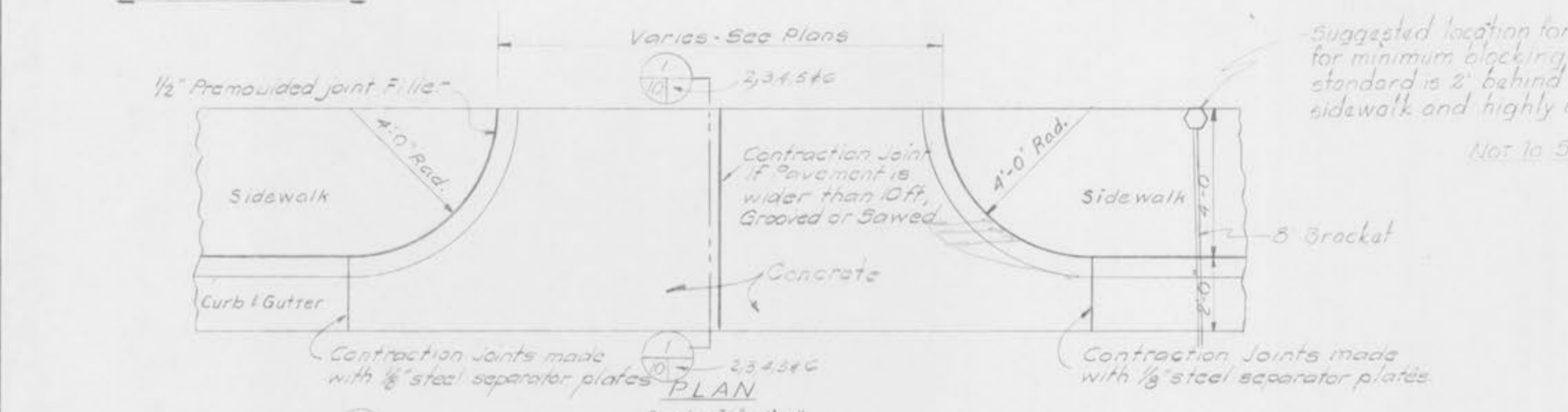


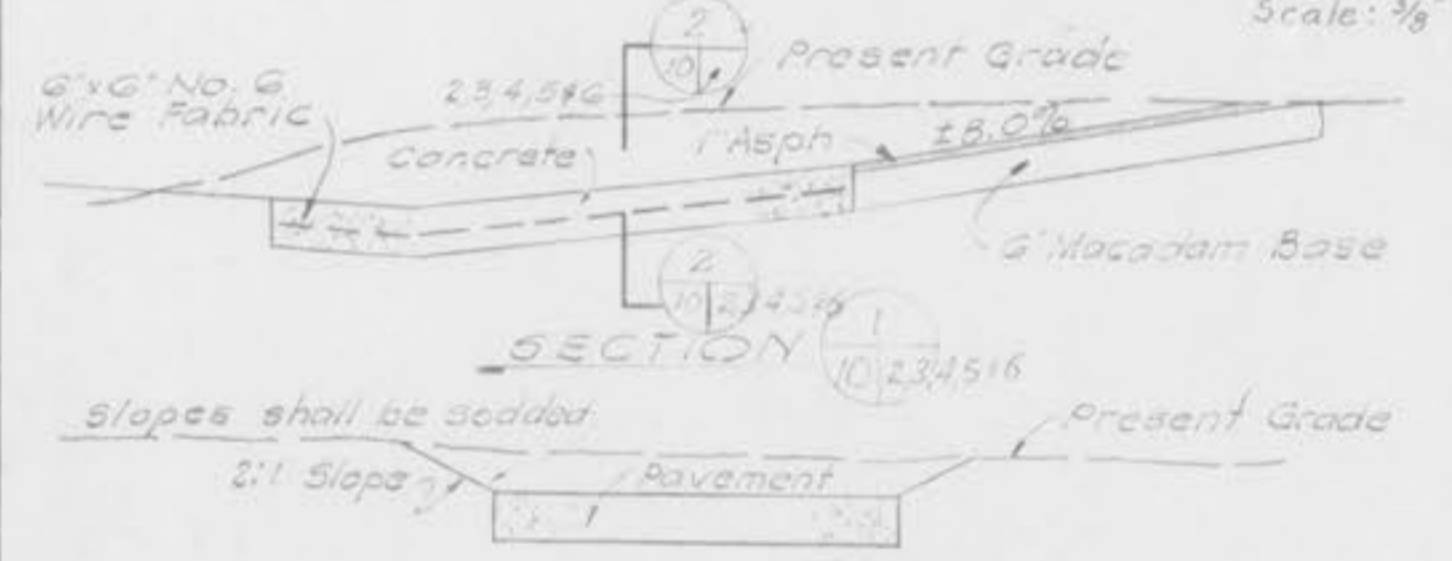
**TYPICAL STREET SECTION
ASPHALTIC CONCRETE**
Scale: 3/4" = 1'-0"



PLAN



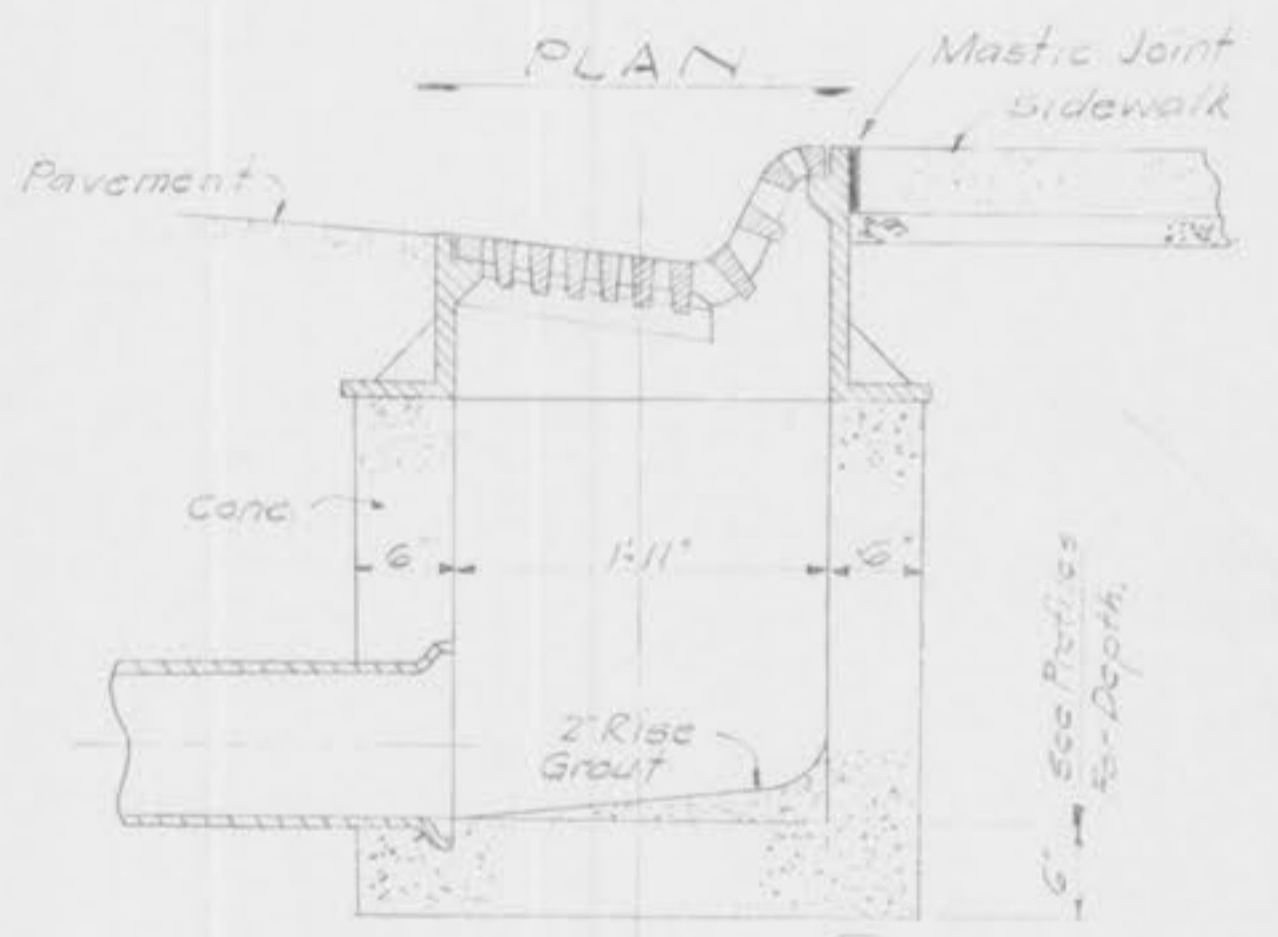
suggested location for street light standard to make for minimum blocking of sidewalk. (Actual installation of standard is 2' behind curb which would be in middle of sidewalk and highly undesirable.)
Not to Scale



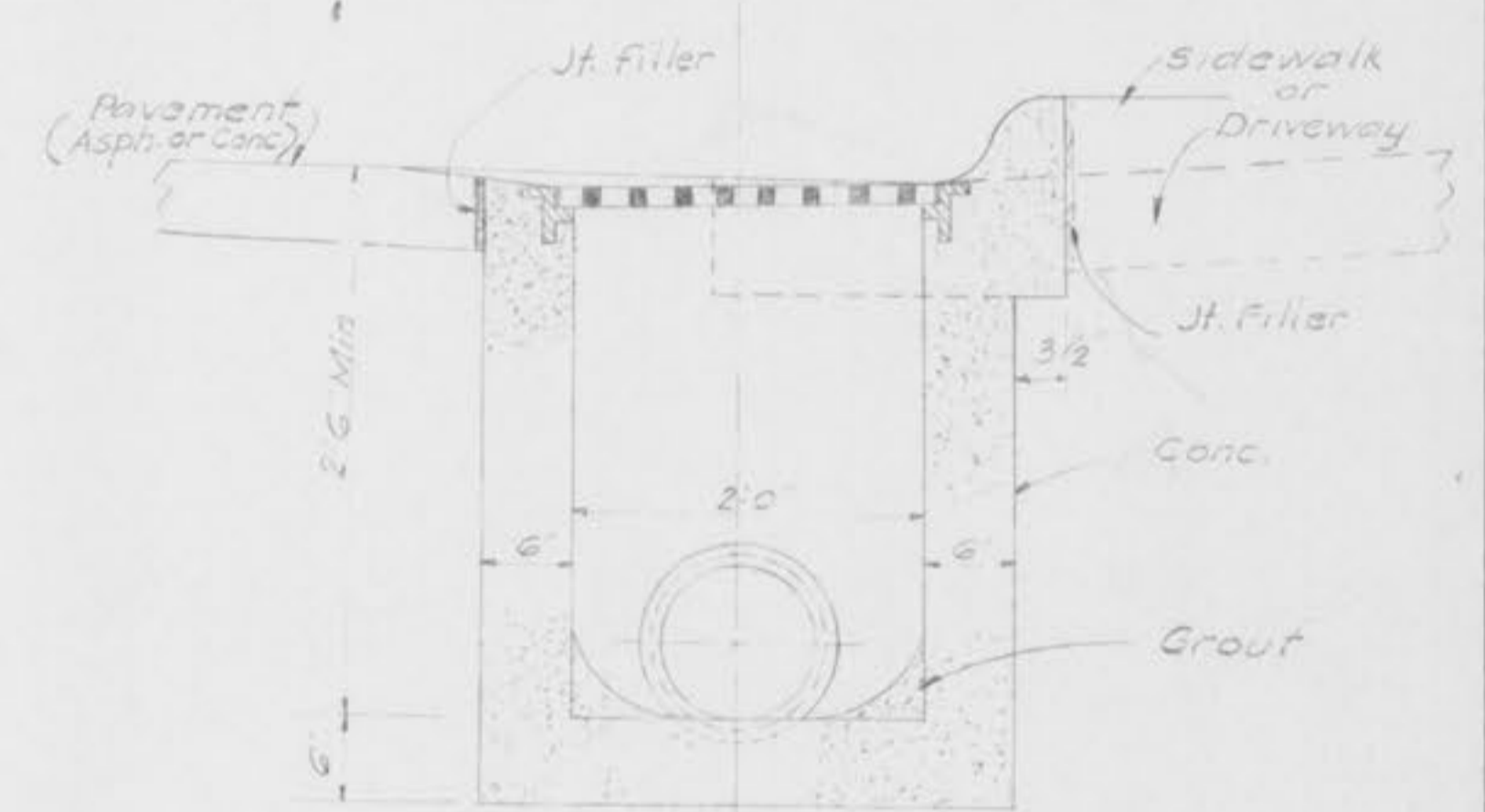
SECTION 1 (DRIVEWAYS IN FILL SECTION)
Scale: 3/8" = 1'-0"

SECTION 2 (DRIVEWAYS IN CUT SECTION)
Scale: 3/8" = 1'-0"

TYP DRIVEWAY INTERSECTIONS

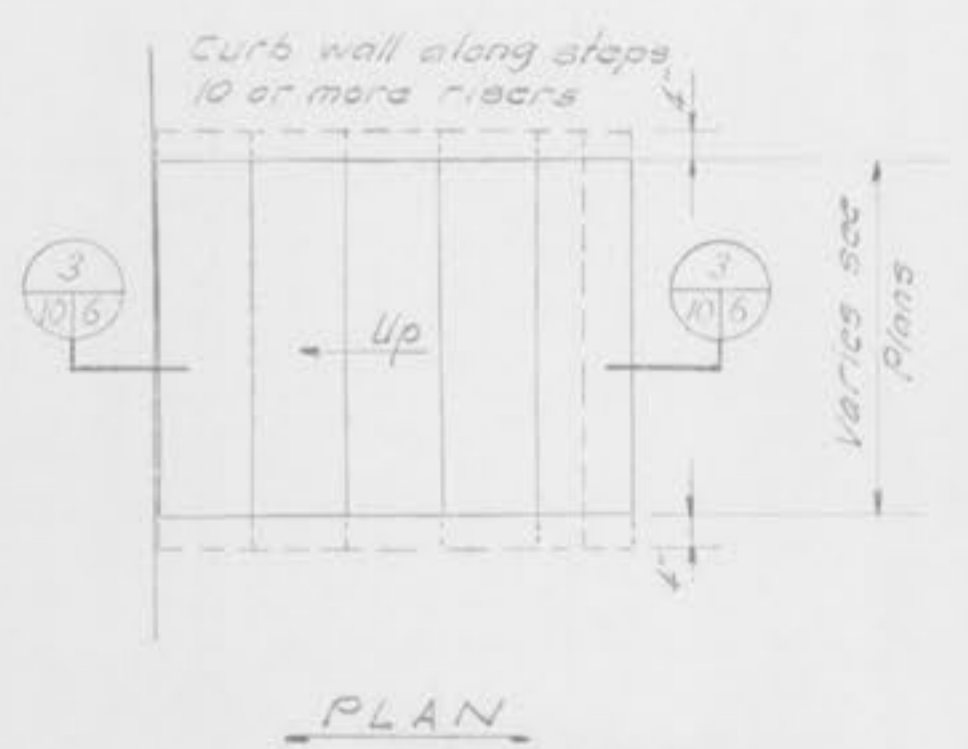


SECTION 5 (TYPE 'A' INLET AND CURB)
Scale: 1" = 1'-0"

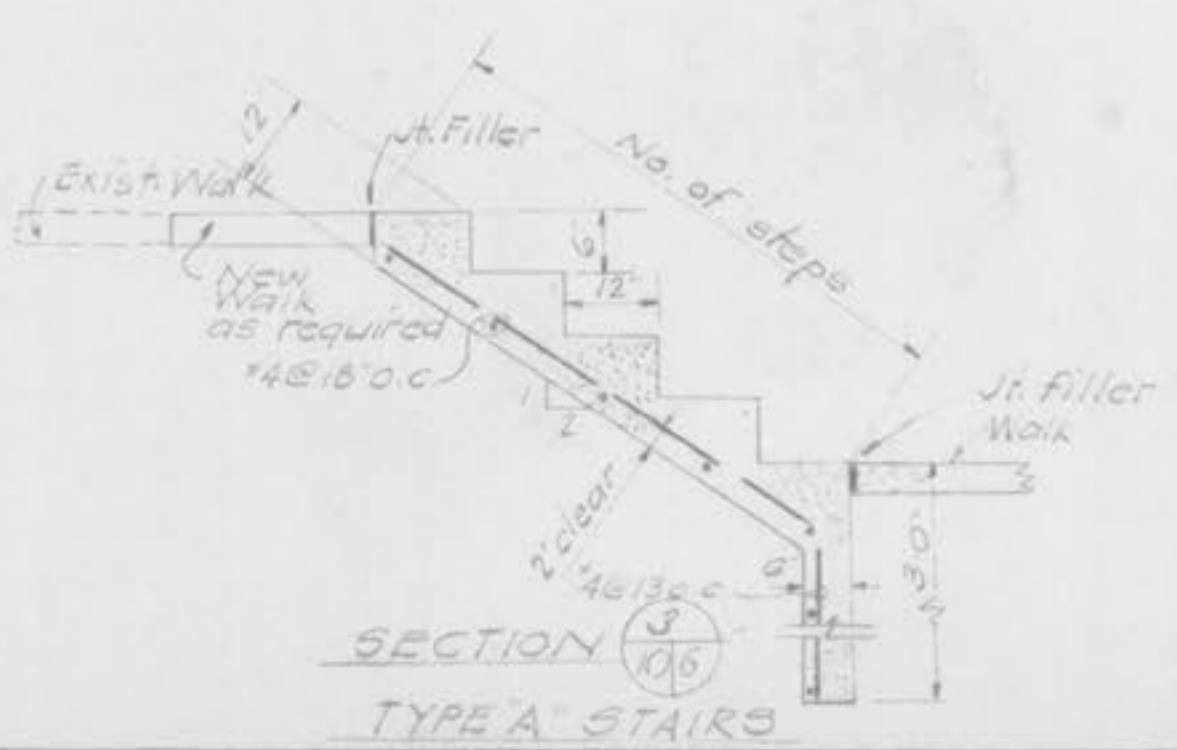


SECTION 7 (TYPE 'B' INLET)
Scale: 1" = 1'-0"

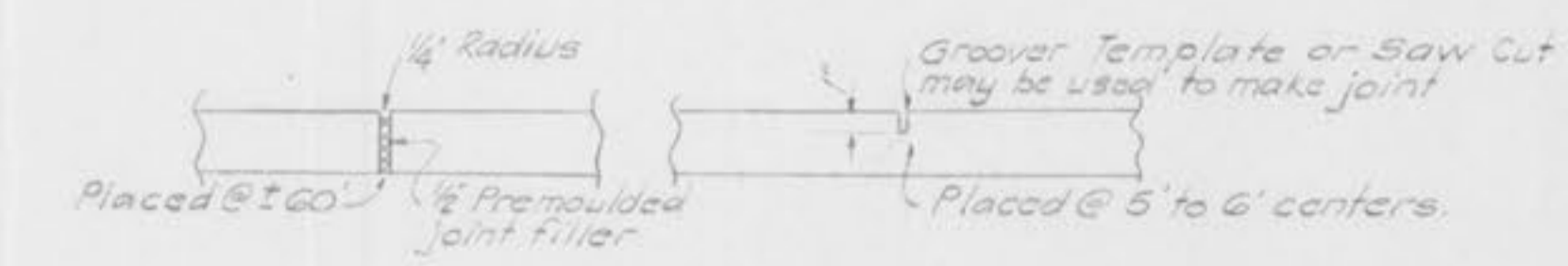
SECTION 6 (TYPE 'A' INLET M.H.)
Scale: 1" = 1'-0"



PLAN

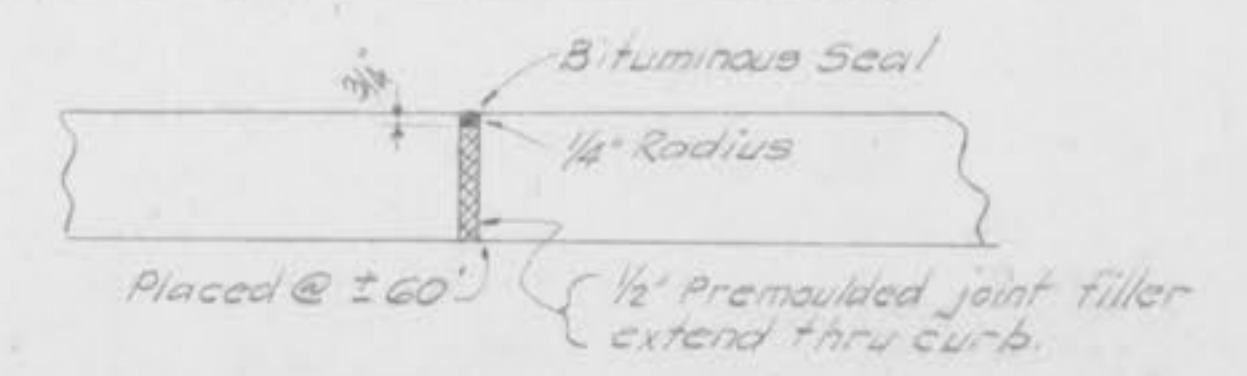


SECTION 3 (TYPE 'A' STAIRS)



TYPICAL EXPANSION JOINT **TYPICAL DUMMY JOINT**

JOINTS IN CONC SIDEWALK



EXPANSION JOINT-CURB & GUTTER

NO.	DATE	DESCRIPTION	BY	CHK.
REVISIONS				
+ RUSSELL & AXON + INC. + CONSULTING ENGINEERS DAYTONA BEACH, FLA. ST. LOUIS, MO.				
O'FALLON, MO.				
DETAILS				
DESIGNED BY L.F.X.	FILE NO. 6410-10-10	SHEET 10		SEAL
DRAWN BY R.H.	CHECKED BY P.M.	OF 11	SHEETS	
DATE April, 1960.	SCALE: As Noted			