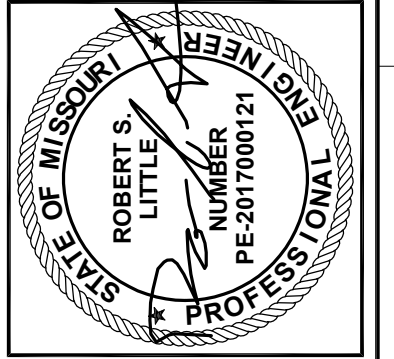


1520 S Fifth Street Suite 306  
St Charles, Missouri 63303  
www.woodardcurran.com

**WOODARD CURRAN**

COMMITMENT & INTEGRITY DRIVE RESULTS

THIS DOCUMENT IS THE PROPERTY OF WOODARD & CURRAN, INC. AND ITS CLIENT. REPRODUCTION OR MODIFICATION WITHOUT WRITTEN PERMISSION IS PROHIBITED.



REV	ISSUED FOR	DESCRIPTION	DATE	CHECKED BY
0			07/18/17	ADL
				KTR

DESIGNED BY: ADL  
DRAWN BY: KTR  
PROJECT NUMBER: 22979000-C01-C107.dwg

**MAIN STREET CUT-IN PLAN**

CITY OF O'FALLON, MISSOURI

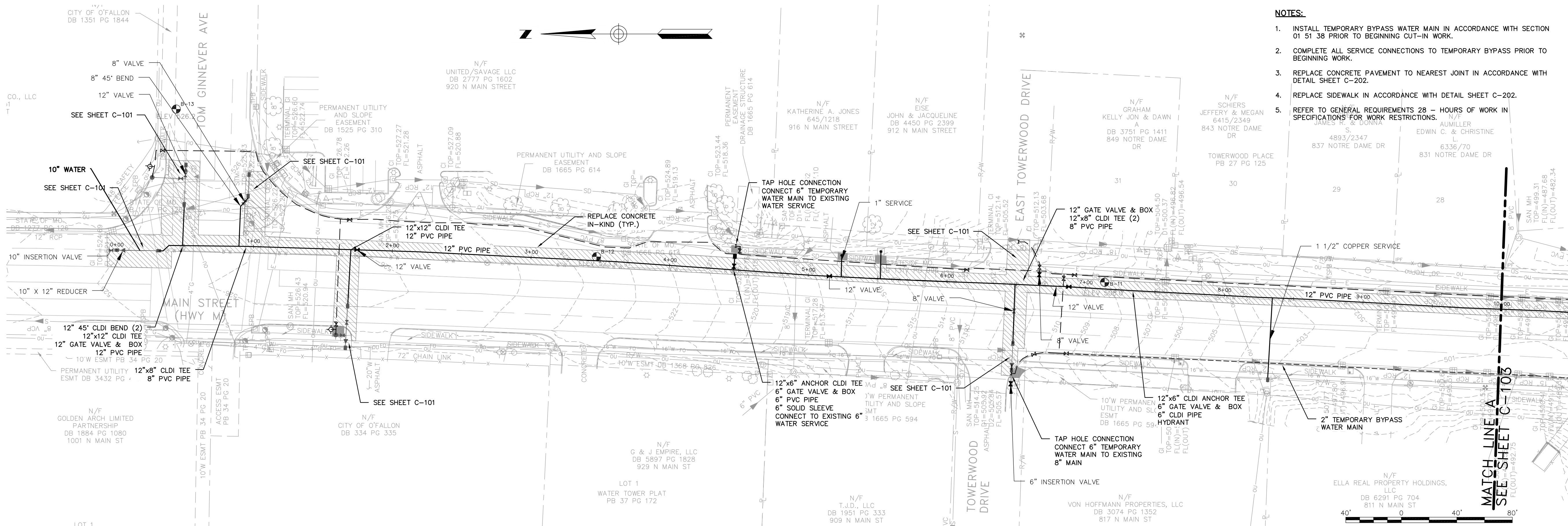
**MAIN STREET WATER MAIN REPLACEMENT**

JOB NO.: 229790.00  
DATE: APRIL 2018  
SCALE: 1"=40'  
SHEET: 2 OF 12

**C-101**

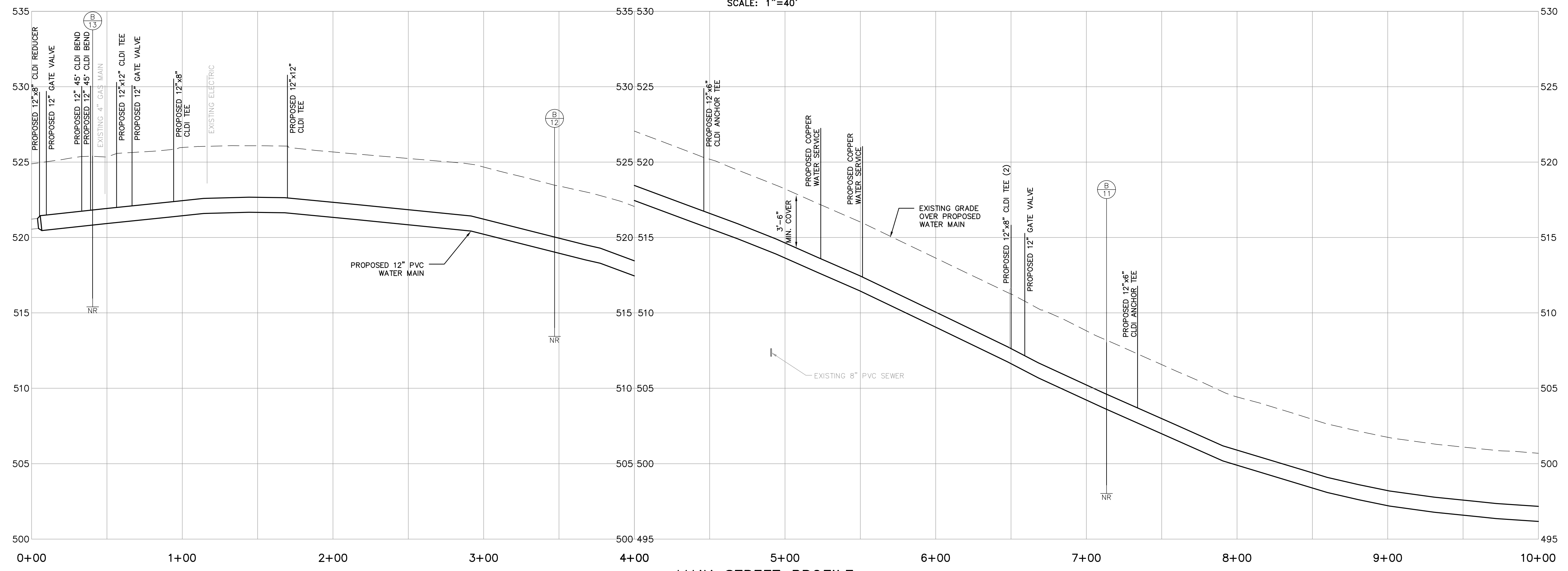
AS-BUILT





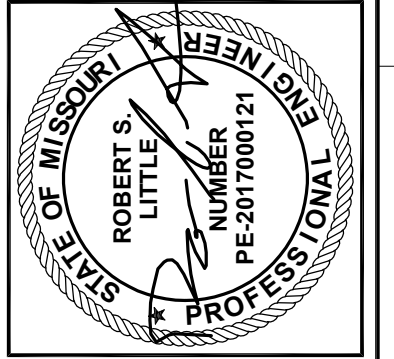
- NOTES:**
1. INSTALL TEMPORARY BYPASS WATER MAIN IN ACCORDANCE WITH SECTION 01 51 38 PRIOR TO BEGINNING CUT-IN WORK.
  2. COMPLETE ALL SERVICE CONNECTIONS TO TEMPORARY BYPASS PRIOR TO BEGINNING WORK.
  3. REPLACE CONCRETE PAVEMENT TO NEAREST JOINT IN ACCORDANCE WITH DETAIL SHEET C-202.
  4. REPLACE SIDEWALK IN ACCORDANCE WITH DETAIL SHEET C-202.
  5. REFER TO GENERAL REQUIREMENTS 28 - HOURS OF WORK IN SPECIFICATIONS FOR WORK RESTRICTIONS.

**MAIN STREET PLAN**  
SCALE: 1"=40'



**MAIN STREET PROFILE**  
SCALE: 1"=40' HORIZONTAL  
1"=4' VERTICAL

1520 S Fifth Street Suite 306  
St Charles, Missouri 63303  
www.woodardcurran.com



REV	DESCRIPTION	DATE	CHECKED BY: ADL
1	ADDENDUM NO. 1	02/07/17	
0	ISSUED FOR BID	01/18/17	

DESIGNED BY: ADL  
DRAWN BY: JDE  
CHECKED BY: ADL  
2297900-C101-C107.dwg

**MAIN STREET PLAN & PROFILE**  
STA. 0+00 TO STA. 10+00

CITY OF O'FALLON, MISSOURI  
MAIN STREET  
WATER MAIN REPLACEMENT

JOB NO.: 229790.00  
DATE: JANUARY 2017  
SCALE: 1"=40'  
SHEET: 3 OF 12

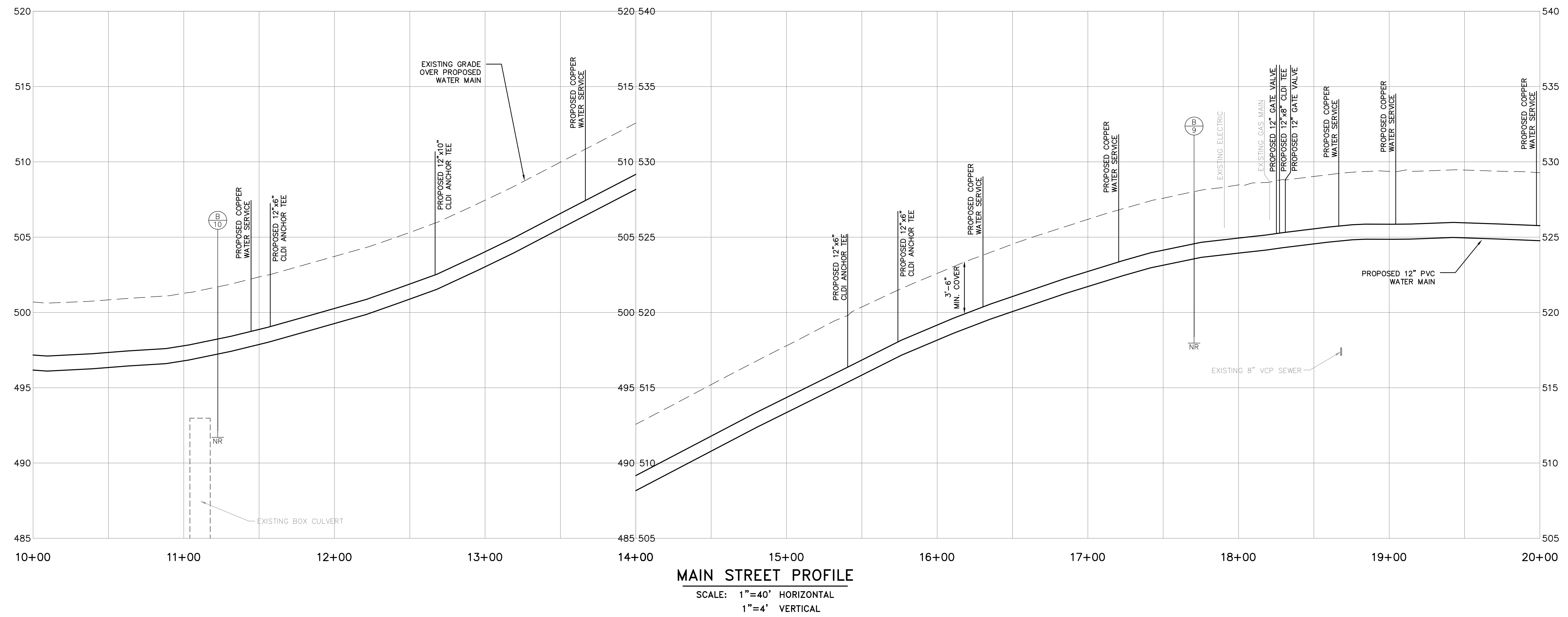
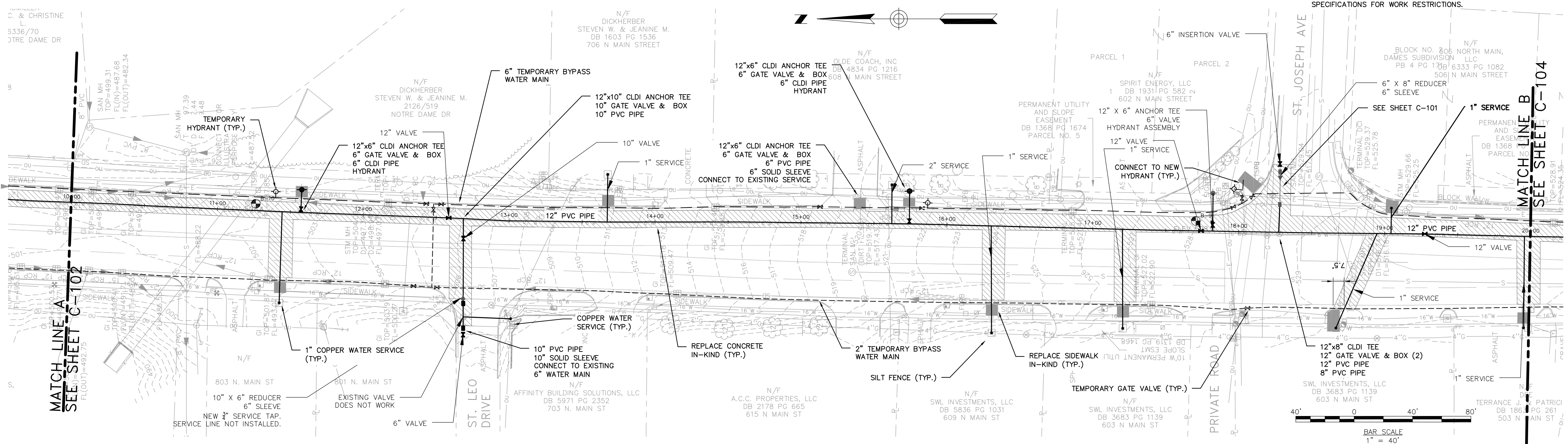
**C-102**

AS-BUILT

W:\woodardcurran.net\shared\Projects\229790 City of O'Fallon-2016 Water Main Replacement\wp\CAD Drawings\As-Built\22979000-C101-C107.dwg, Oct. 30, 2018 - 2:59pm



- NOTES:**
1. INSTALL TEMPORARY BYPASS WATER MAIN IN ACCORDANCE WITH SECTION 01 51 38 PRIOR TO BEGINNING CUT-IN WORK.
  2. COMPLETE ALL SERVICE CONNECTIONS TO TEMPORARY BYPASS PRIOR TO BEGINNING WORK.
  3. REPLACE CONCRETE PAVEMENT TO NEAREST JOINT IN ACCORDANCE WITH DETAIL SHEET C-202.
  4. REPLACE SIDEWALK IN ACCORDANCE WITH DETAIL SHEET C-202.
  5. REFER TO GENERAL REQUIREMENTS 28 - HOURS OF WORK IN SPECIFICATIONS FOR WORK RESTRICTIONS.

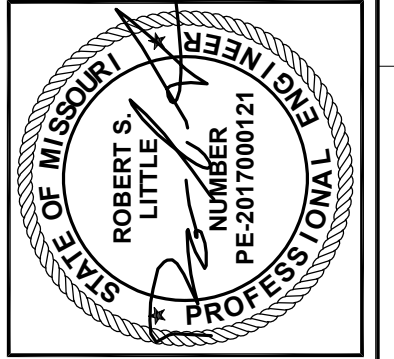


1520 S Fifth Street Suite 306  
St. Charles, Missouri 63303  
www.woodardcurran.com

**WOODARD CURRAN**

COMMITMENT & INTEGRITY DRIVE RESULTS

THIS DOCUMENT IS THE PROPERTY OF WOODARD & CURRAN, INC. AND ITS CLIENT. REPRODUCTION OR MODIFICATION WITHOUT WRITTEN PERMISSION IS PROHIBITED.



NO.	ADDENDUM NO.	DESCRIPTION	DATE	CHECKED BY: ADL
1		ISSUED FOR BID	02/07/17	
2		ISSUED FOR BID	01/18/17	

DESIGNED BY: ADL  
DRAWN BY: JDE  
2297900-C01-C107.dwg

**MAIN STREET PLAN & PROFILE**  
STA. 10+00 TO STA. 20+00

CITY OF O'FALLON, MISSOURI

**MAIN STREET WATER MAIN REPLACEMENT**

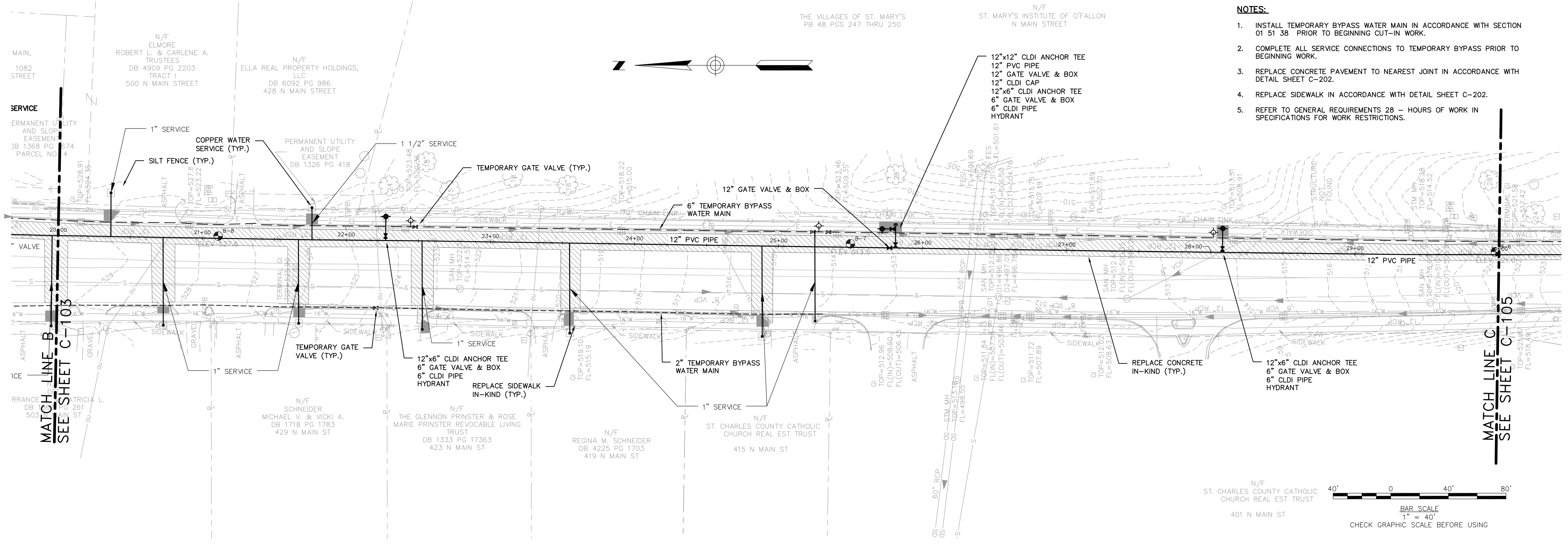
JOB NO.: 229790.00  
DATE: JANUARY 2017  
SCALE: 1"=40'  
SHEET: 4 OF 12

**C-103**

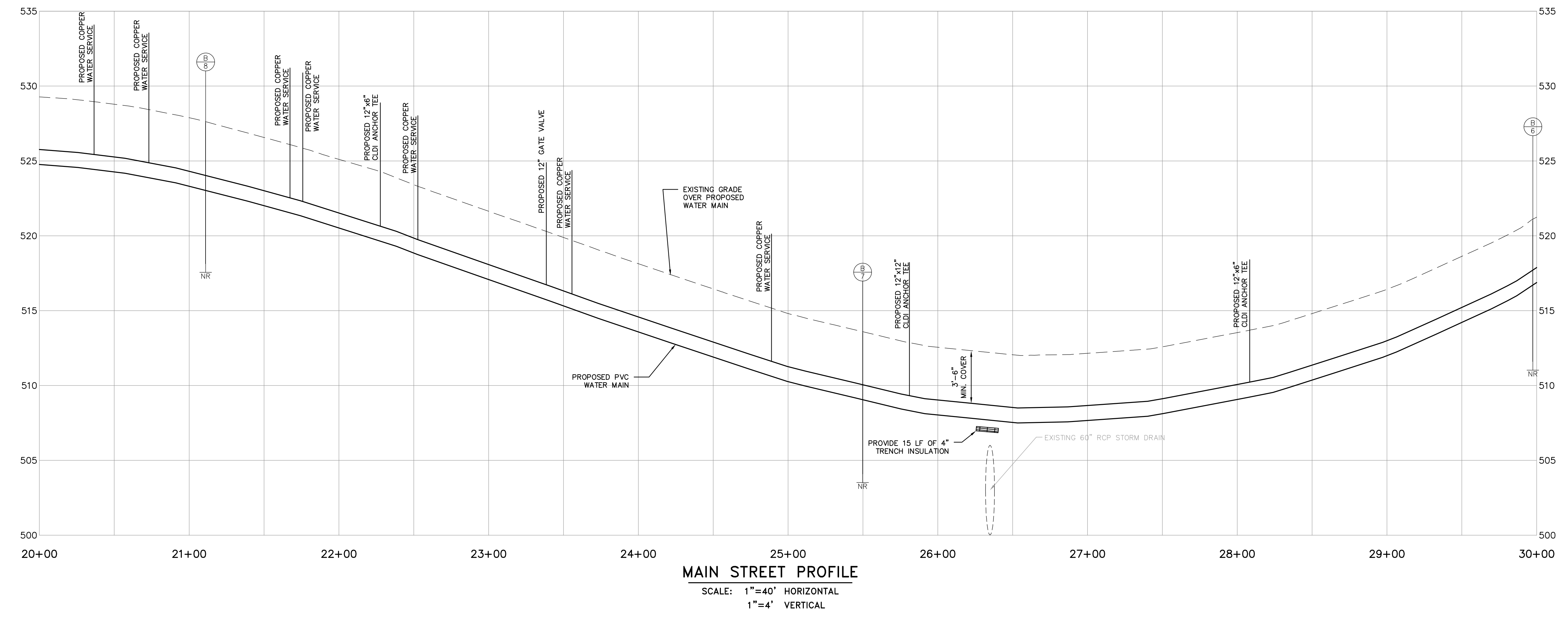
AS-BUILT

\\woodardcurran.net\shared\Projects\2297900\_City\_of\_O'Fallon-2016\_Water\_Main\_Replacement\wp\CAD\_Drawings\As-Built\22979000-C101-C107.dwg, Oct. 30, 2018 - 2:59pm





**MAIN STREET PLAN**  
SCALE: 1"=40'



1520 S Fifth Street Suite 306  
St. Charles, Missouri 63303  
www.woodardcurran.com

**WOODARD & CURRAN**

COMMITMENT & INTEGRITY DRIVE RESULTS

THIS DOCUMENT IS THE PROPERTY OF WOODARD & CURRAN, INC. AND ITS CLIENT. REPRODUCTION OR MODIFICATION WITHOUT WRITTEN PERMISSION IS PROHIBITED.

STATE OF MISSOURI  
ROBERT S. LITTLE  
REGISTERED PROFESSIONAL ENGINEER  
PE 2017000121

REV	DESCRIPTION	DATE	CHECKED BY: ADL
1	ADDENDUM NO. 1	02/07/17	
0	ISSUED FOR BID	01/18/17	

DESIGNED BY: ADL  
DRAWN BY: JDE  
22979000-C101\_C107.dwg

**MAIN STREET PLAN & PROFILE**  
STA. 20+00 TO STA. 30+00

CITY OF O'FALLON, MISSOURI

**MAIN STREET WATER MAIN REPLACEMENT**

JOB NO.: 229790.00  
DATE: JANUARY 2017  
SCALE: 1"=40'  
SHEET: 5 OF 12

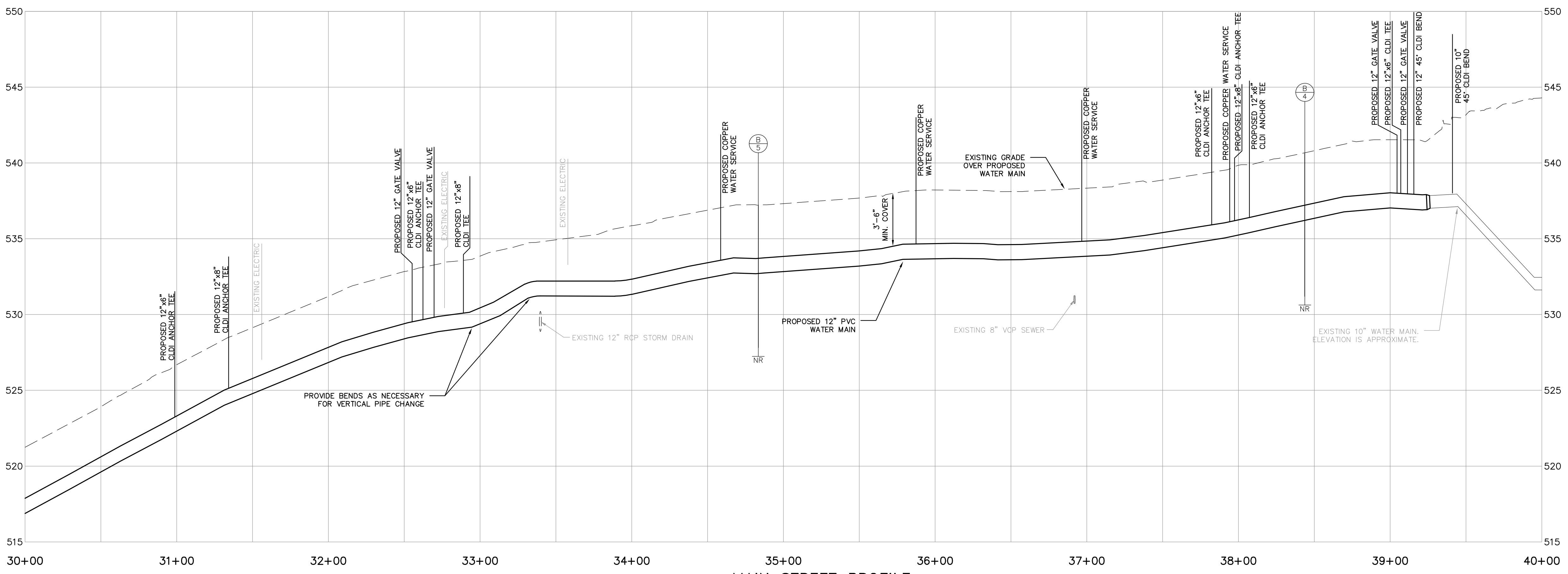
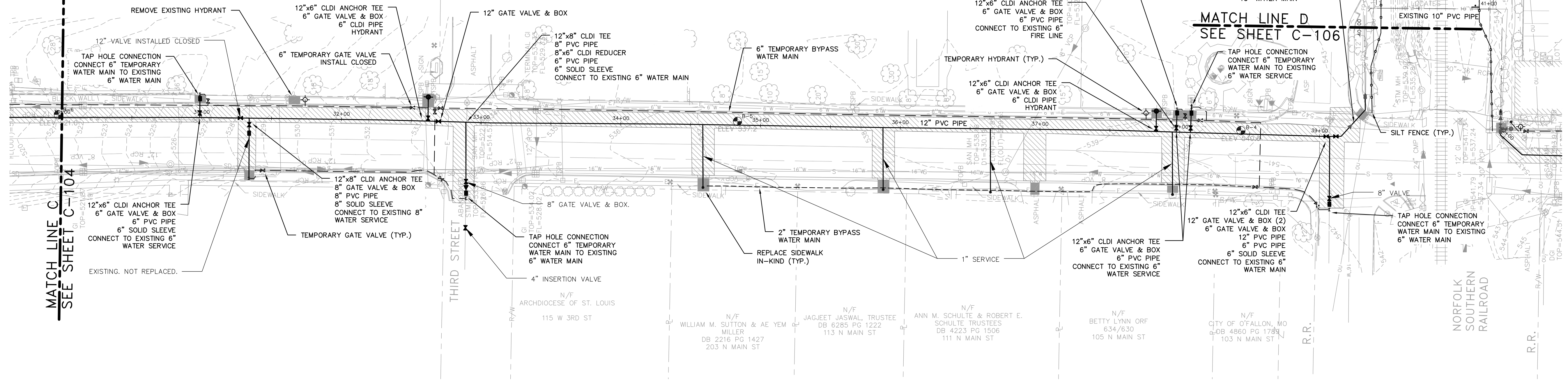
**C-104**

AS-BUILT

\\woodardcurran.net\shared\Projects\22979000-City of O'Fallon-2016 Water Main Replacement\wpb\CAD Drawings\As-Built\C101-C107.dwg, Oct. 30, 2018 - 3:00pm



- NOTES:**
1. INSTALL TEMPORARY BYPASS WATER MAIN IN ACCORDANCE WITH SECTION 01 51 38 PRIOR TO BEGINNING CUT-IN WORK.
  2. COMPLETE ALL SERVICE CONNECTIONS TO TEMPORARY BYPASS PRIOR TO BEGINNING WORK.
  3. REPLACE CONCRETE PAVEMENT TO NEAREST JOINT IN ACCORDANCE WITH DETAIL SHEET C-202.
  4. REPLACE SIDEWALK IN ACCORDANCE WITH DETAIL SHEET C-202.
  5. REFER TO GENERAL REQUIREMENTS 28 - HOURS OF WORK IN SPECIFICATIONS FOR WORK RESTRICTIONS.

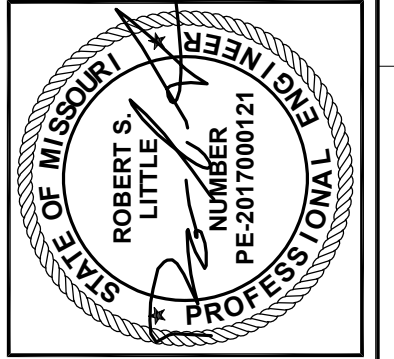


1520 S Fifth Street Suite 306  
St. Charles, Missouri 63303  
www.woodardcurran.com

**WOODARD & CURRAN**

COMMITMENT & INTEGRITY DRIVE RESULTS

THIS DOCUMENT IS THE PROPERTY OF WOODARD & CURRAN, INC. AND ITS CLIENT. REPRODUCTION OR MODIFICATION WITHOUT WRITTEN PERMISSION IS PROHIBITED.



REV.	DESCRIPTION	DATE	CHECKED BY: ADL
1	ADDENDUM NO. 1	02/07/17	
	ISSUED FOR BID	01/18/17	

DESIGNED BY: ADL  
DRAWN BY: JDE  
CHECKED BY: ADL  
2297900P-C101\_C107.dwg

**MAIN STREET PLAN & PROFILE**  
STA. 30+00 TO STA. 40+00

CITY OF O'FALLON, MISSOURI

**MAIN STREET WATER MAIN REPLACEMENT**

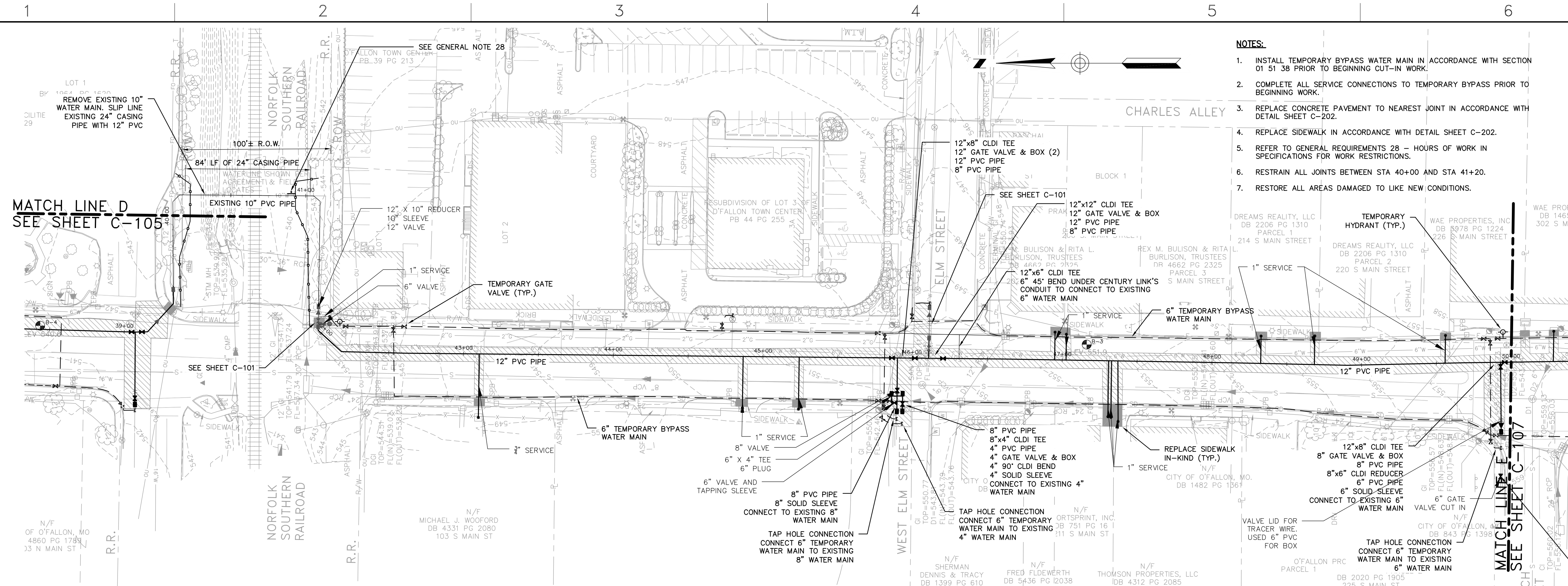
JOB NO.: 229790.00  
DATE: JANUARY 2017  
SCALE: 1"=40'  
SHEET: 6 OF 12

**C-105**

AS-BUILT

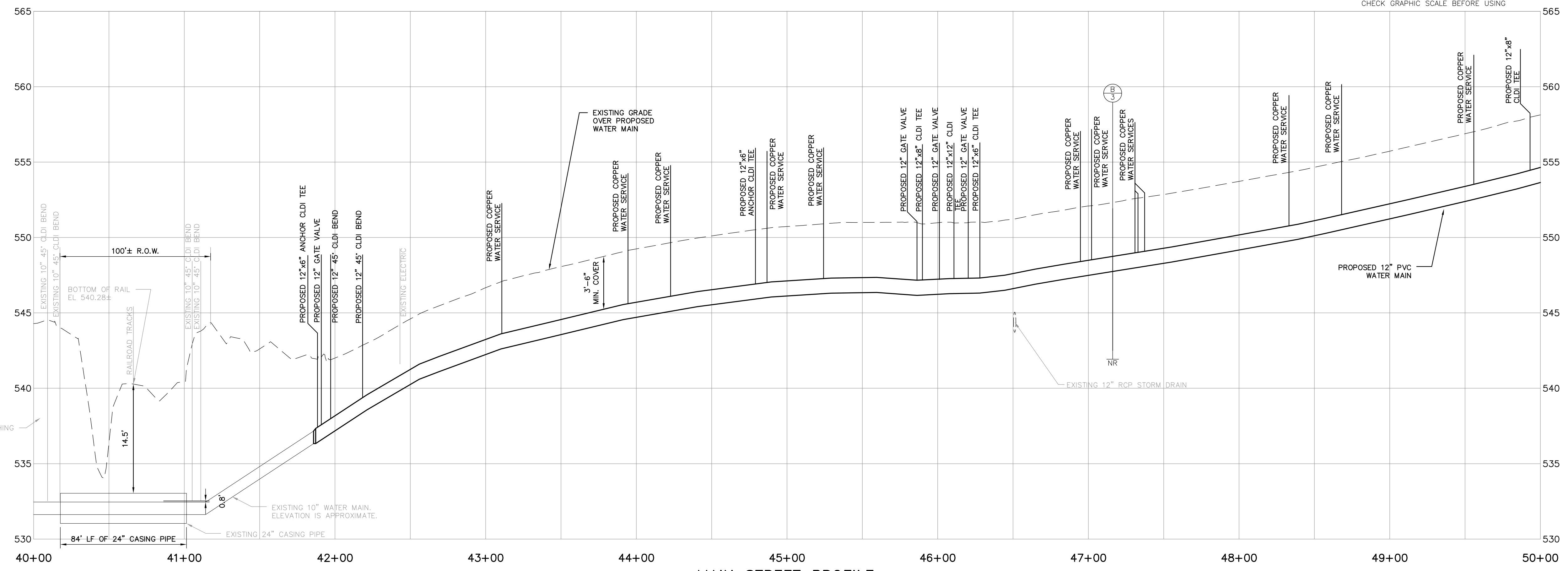
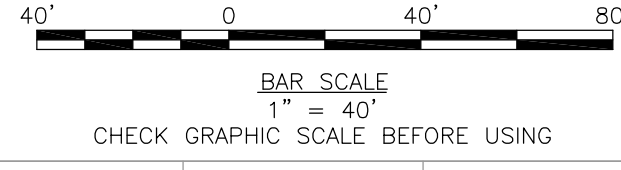
W:\woodardcurran.net\shared\Projects\229790 City of O'Fallon-2016 Water Main Replacement\wpb\CAD Drawings\As-Built\22979000-C101-C107.dwg, Oct. 30, 2018 - 3:00pm





- NOTES:**
1. INSTALL TEMPORARY BYPASS WATER MAIN IN ACCORDANCE WITH SECTION 01 51 38 PRIOR TO BEGINNING CUT-IN WORK.
  2. COMPLETE ALL SERVICE CONNECTIONS TO TEMPORARY BYPASS PRIOR TO BEGINNING WORK.
  3. REPLACE CONCRETE PAVEMENT TO NEAREST JOINT IN ACCORDANCE WITH DETAIL SHEET C-202.
  4. REPLACE SIDEWALK IN ACCORDANCE WITH DETAIL SHEET C-202.
  5. REFER TO GENERAL REQUIREMENTS 28 - HOURS OF WORK IN SPECIFICATIONS FOR WORK RESTRICTIONS.
  6. RESTRAIN ALL JOINTS BETWEEN STA 40+00 AND STA 41+20.
  7. RESTORE ALL AREAS DAMAGED TO LIKE NEW CONDITIONS.

**MAIN STREET PLAN**  
SCALE: 1"=40'

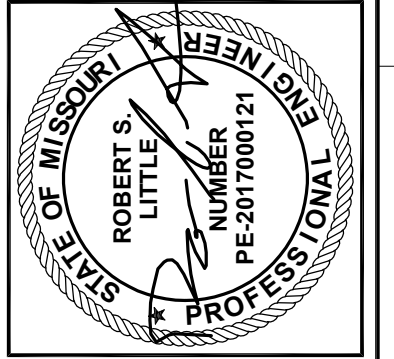


**MAIN STREET PROFILE**  
SCALE: 1"=40' HORIZONTAL  
1"=4' VERTICAL

1520 S Fifth Street Suite 306  
St Charles, Missouri 63303  
www.woodardcurran.com

**WOODARD & CURRAN**

COMMITMENT & INTEGRITY DRIVE RESULTS



REV	DESCRIPTION	DATE	CHECKED BY: ADL
1	ADDENDUM NO. 1	02/07/17	
	ISSUED FOR BID	01/18/17	

DESIGNED BY: ADL  
DRAWN BY: JDE  
PROJECT NUMBER: 2297900-C01-C107.dwg

**MAIN STREET PLAN & PROFILE**  
STA. 40+00 TO STA. 50+00

CITY OF O'FALLON, MISSOURI

**MAIN STREET WATER MAIN REPLACEMENT**

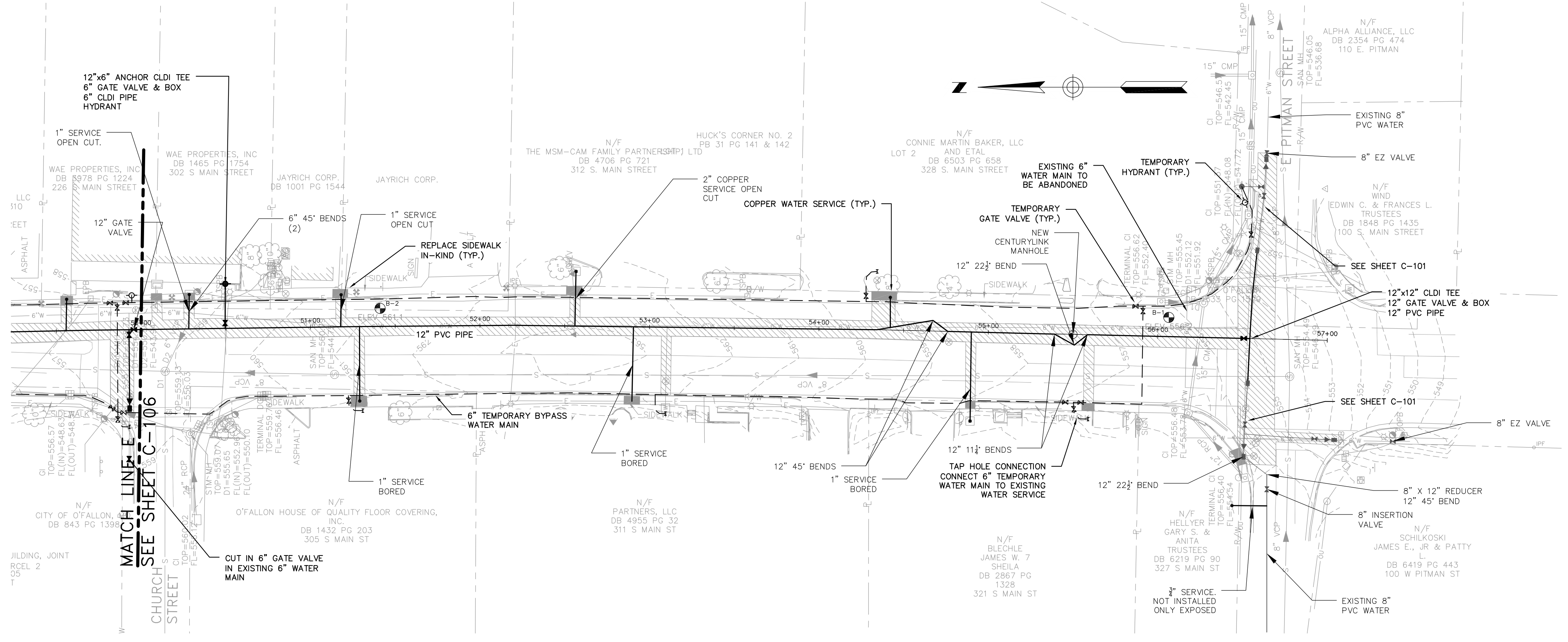
JOB NO.: 229790.00  
DATE: JANUARY 2017  
SCALE: 1"=40'  
SHEET: 7 OF 12

**C-106**

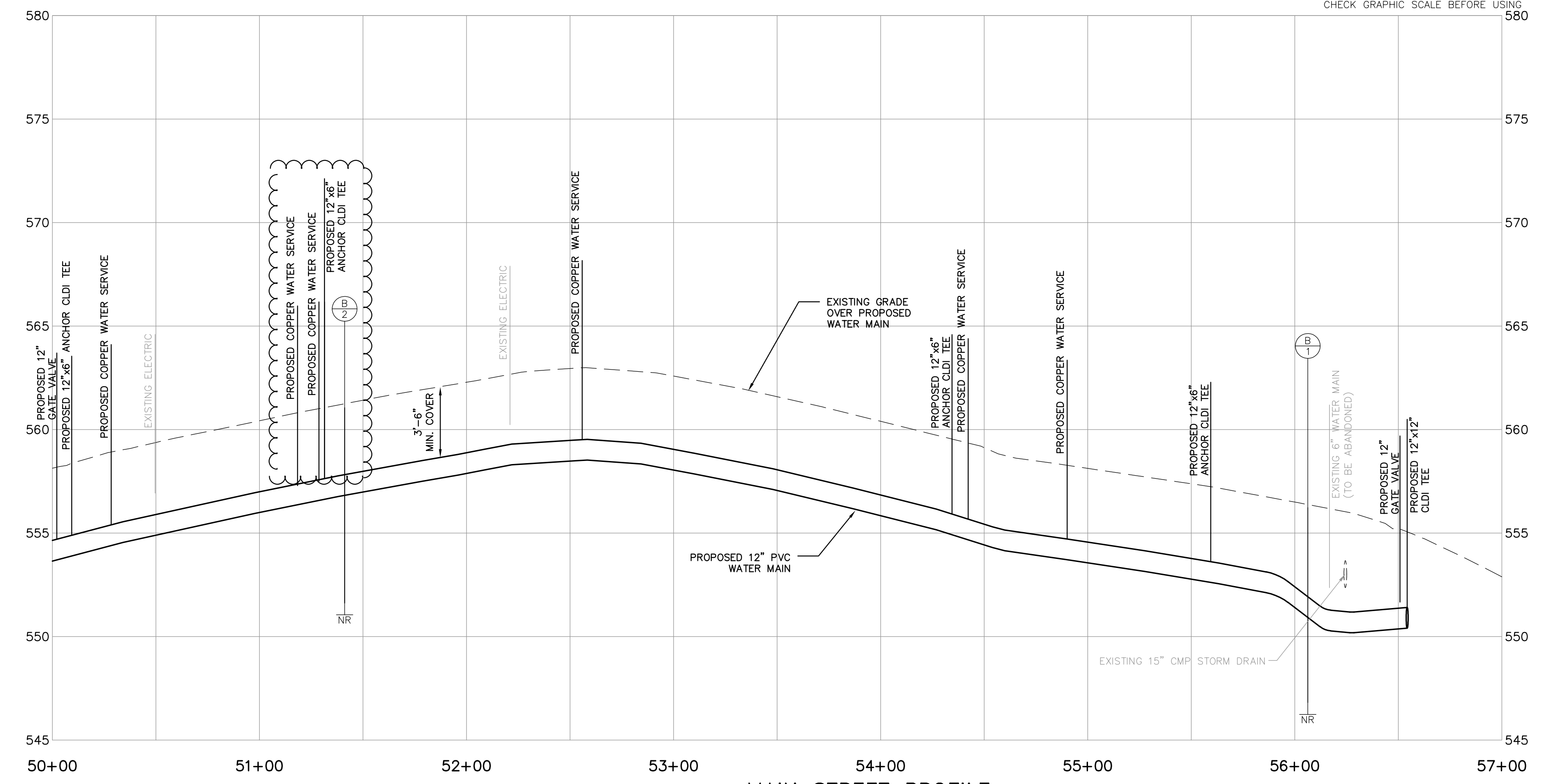
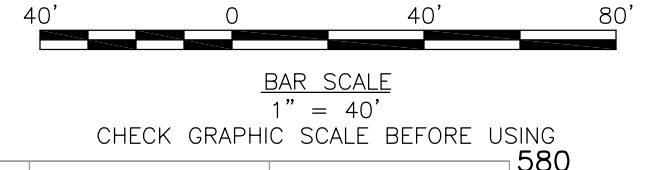
AS-BUILT

W:\woodardcurran.net\shared\Projects\229790\_City of O'Fallon-2016 Water Main Replacement\wp\CAD Drawings\As-Built\22979000-C101-C107.dwg, Oct. 30, 2018 - 3:00pm





**MAIN STREET PLAN**  
SCALE: 1"=40'



**MAIN STREET PROFILE**  
SCALE: 1"=40' HORIZONTAL  
1"=4' VERTICAL

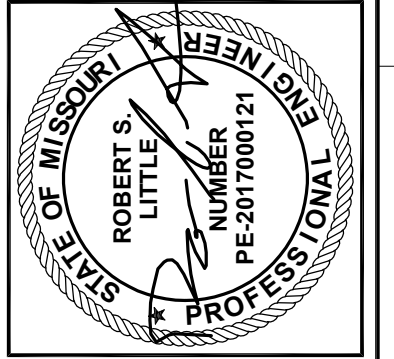
- NOTES:**
- INSTALL TEMPORARY BYPASS WATER MAIN IN ACCORDANCE WITH SECTION 01 51 38 PRIOR TO BEGINNING CUT-IN WORK.
  - COMPLETE ALL SERVICE CONNECTIONS TO TEMPORARY BYPASS PRIOR TO BEGINNING CUT-IN WORK.
  - PRE-EXCAVATE, SHOR AND PLATE CUT-IN WORK LOCATIONS TO MINIMIZE SHUT-DOWN TIME REQUIRED.
  - COORDINATE SHUT-DOWNS WITH OWNER. SUBMIT SCHEDULE TO OWNER AT LEAST 10 WORKING DAYS PRIOR TO BEGINNING WORK FOR REVIEW AND APPROVAL.
  - REPLACE CONCRETE PAVEMENT TO NEAREST JOINT IN ACCORDANCE WITH DETAIL SHEET C-202.
  - REPLACE SIDEWALK IN ACCORDANCE WITH DETAIL SHEET C-202.

1520 S Fifth Street Suite 306  
St Charles, Missouri 63303  
www.woodardcurran.com

**WOODARD & CURRAN**

COMMITMENT & INTEGRITY DRIVE RESULTS

THIS DOCUMENT IS THE PROPERTY OF WOODARD & CURRAN, INC. AND ITS CLIENT. REPRODUCTION OR MODIFICATION WITHOUT WRITTEN PERMISSION IS PROHIBITED.



NO.	DESCRIPTION	DATE	CHECKED BY: ADL
1	APPENDUM NO. 1	02/07/17	
0	ISSUED FOR BID	01/18/17	
REVISION	DESCRIPTION	DATE	CHECKED BY: ADL
			2297900-C101_C107.dwg
			DRAWN BY: JDE

**MAIN STREET PLAN & PROFILE**  
STA. 50+00 TO STA. 57+00

CITY OF O'FALLON, MISSOURI

**MAIN STREET WATER MAIN REPLACEMENT**

JOB NO.: 229790.00  
DATE: JANUARY 2017  
SCALE: 1"=40'  
SHEET: 8 OF 12

**C-107**

AS-BUILT

D:\woodardcurran.net\shared\Projects\229790 City of O'Fallon-2016 Water Main Replacement\wp\CAD Drawings\As-Built\22979000-C101-C107.dwg, Oct. 30, 2018 - 3:00pm