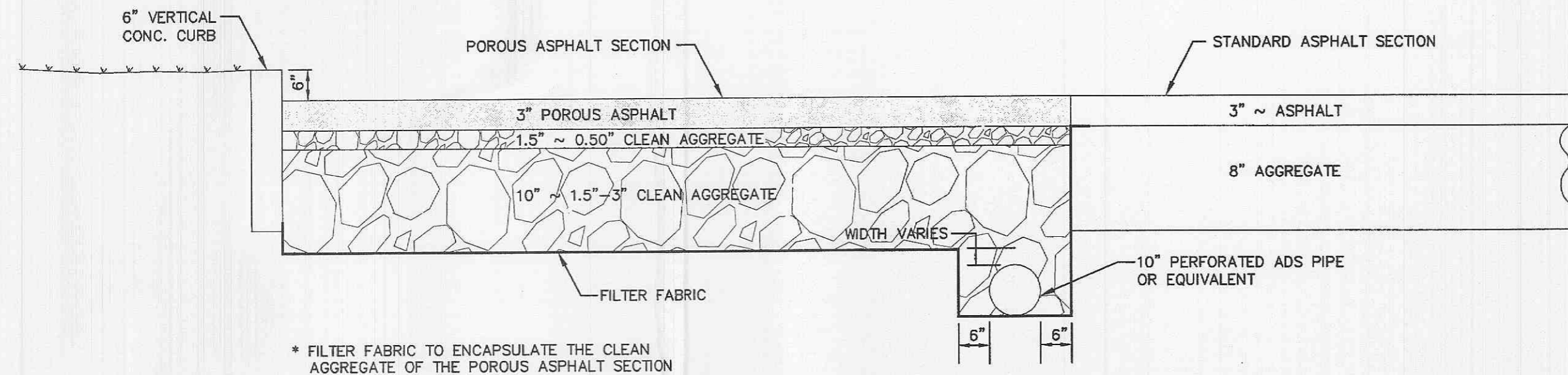
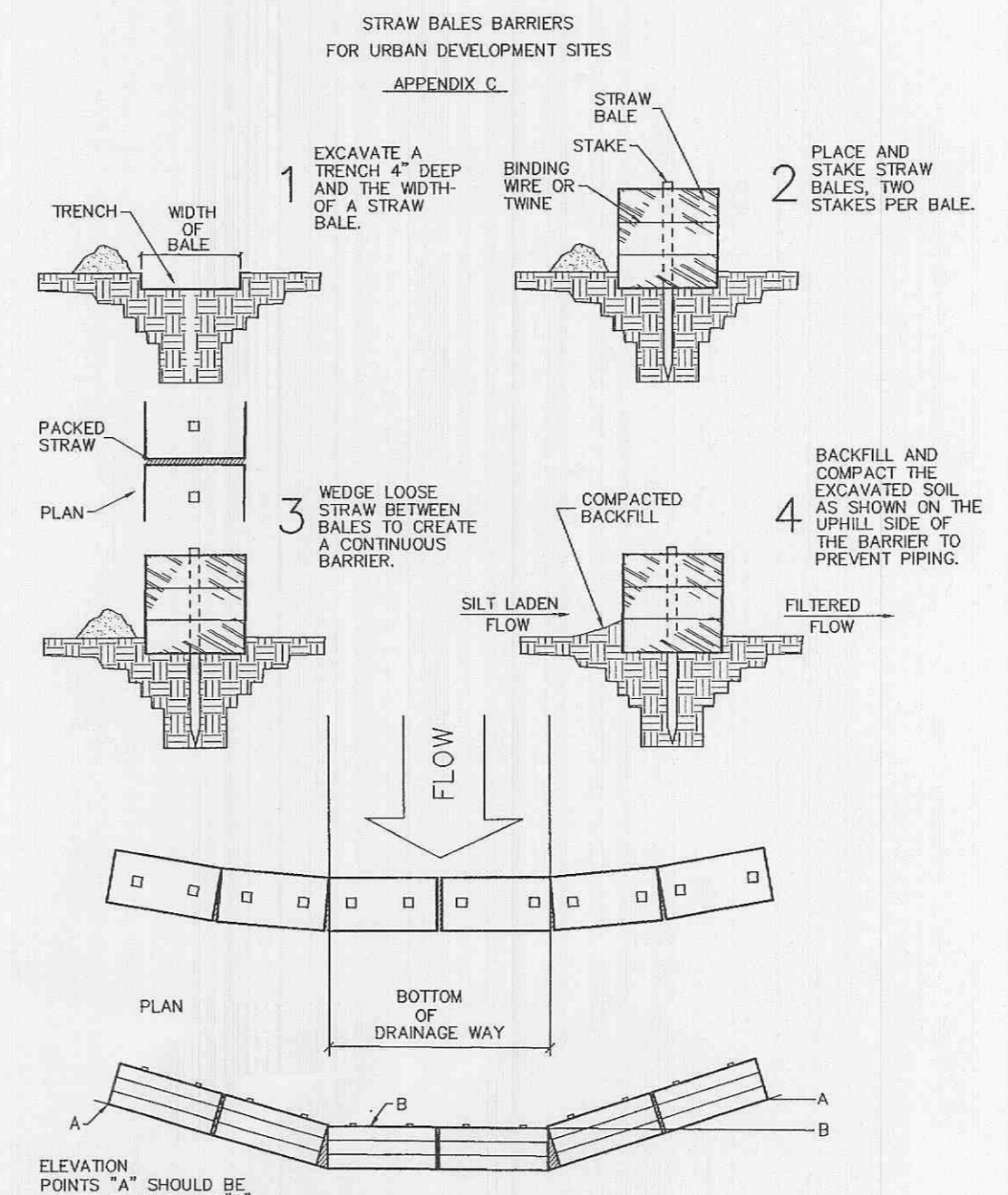


REVISIONS:
12-07-06 CITY COMMENTS
04-24-07 CITY COMMENTS
05-04-07 CITY COMMENTS

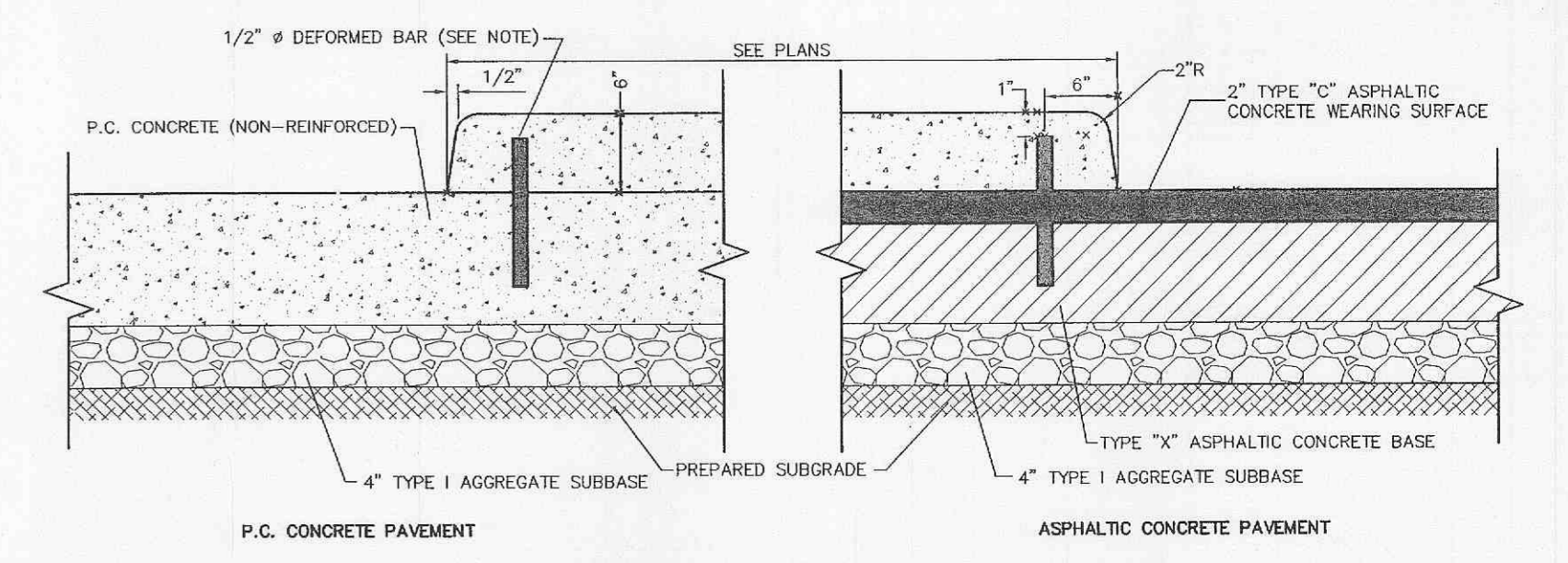


* FILTER FABRIC TO ENCAPSULATE THE CLEAN AGGREGATE OF THE POROUS ASPHALT SECTION

PARKING LOT PAVEMENT SECTION
NOT TO SCALE

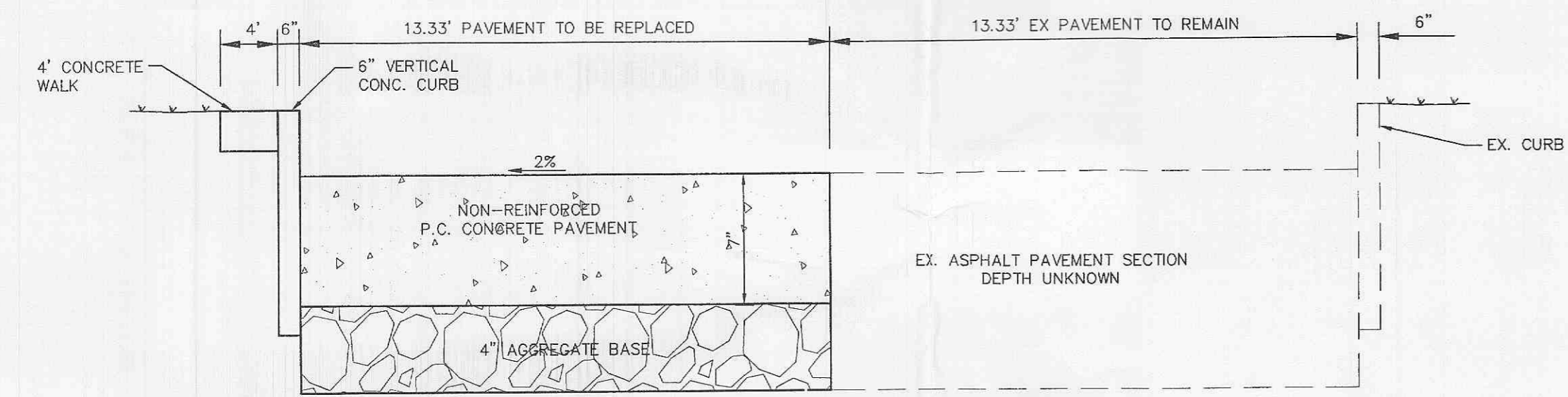


PLACEMENT AND CONSTRUCTION OF STRAW BALE BARRIER

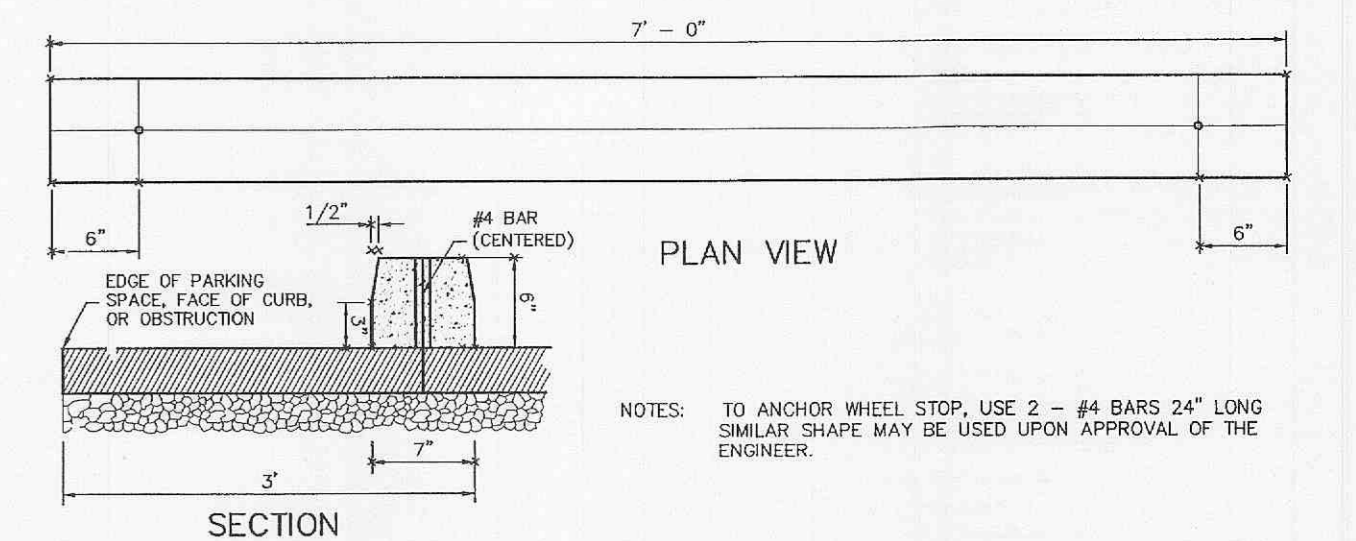


NOTE: LENGTH OF THE REBARS SHALL EQUAL THE THICKNESS OF PAVEMENT PLUS THE HEIGHT OF CURB LESS 3". THE BARS SHALL BE PLACED AT 24" CENTERS.

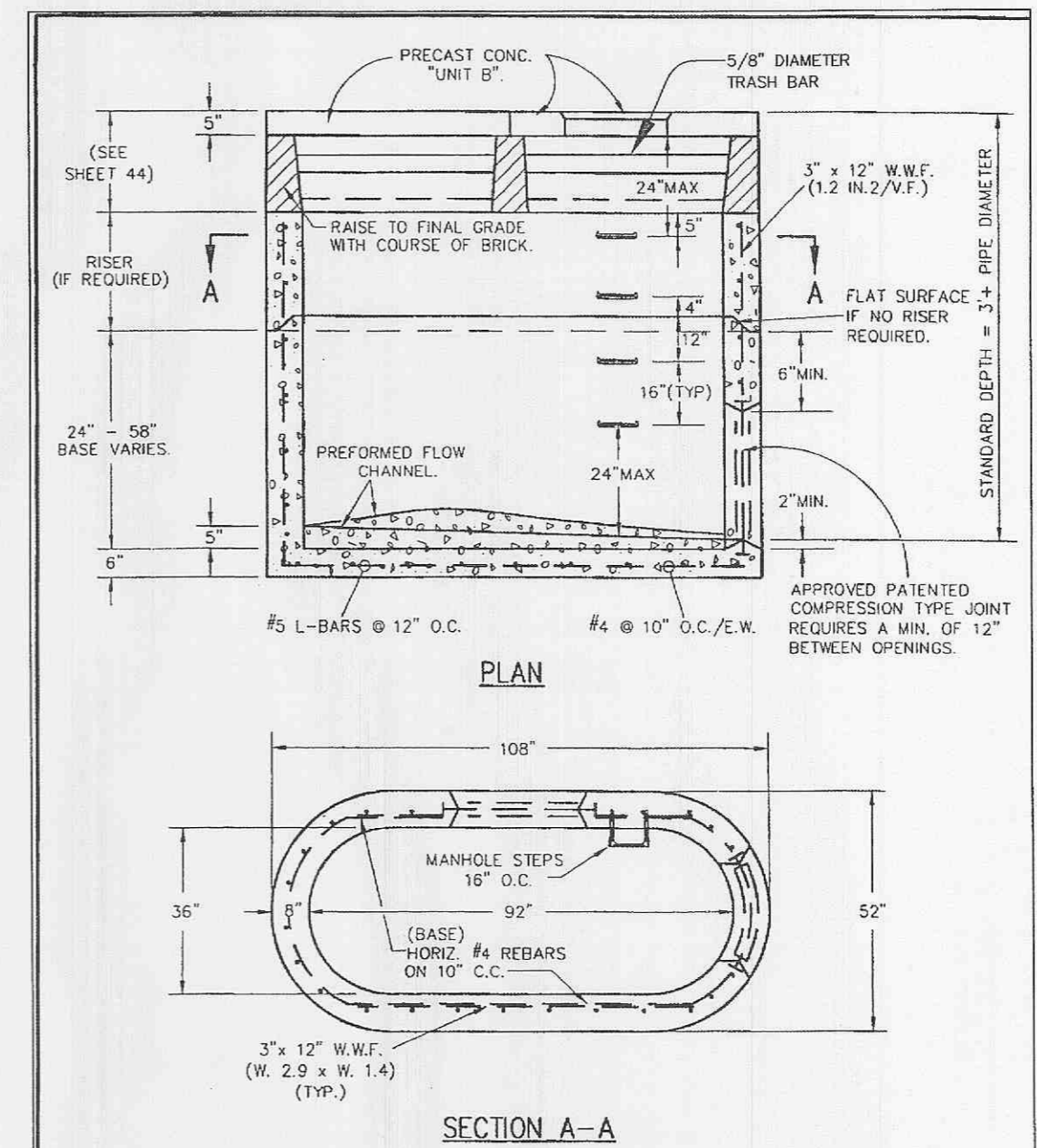
RAISED CONCRETE ISLAND
NOT TO SCALE



DANIEL DRIVE TYPICAL SECTION
NOT TO SCALE

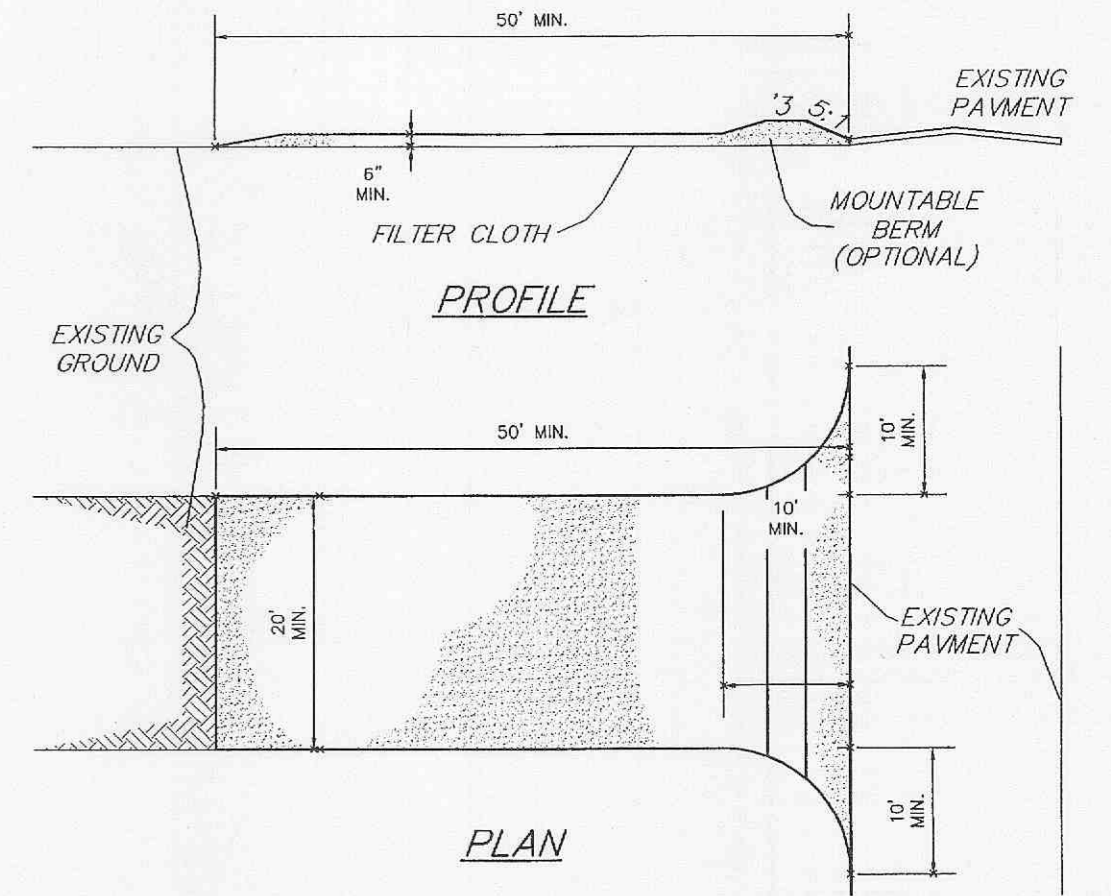


PRECAST CONCRETE WHEELSTOP



NOTE:
33 INCH R.C.P. MAXIMUM PIPES FRONT & BACK WALLS AND 24 INCH R.C.P. MAXIMUM PIPE FOR ENDS WITH A MINIMUM OF 12 INCHES BETWEEN PIPES.

DOUBLE UNTRAPPED STREET INLET PRECAST CONCRETE	METROPOLITAN ST. LOUIS SEWER DISTRICT Standard Details of Sewer Construction Dr. J.L.G./SAM Ch. J.C.K.	2000	SHEET 38
--	---	------	----------



CONSTRUCTION SPECIFICATIONS

- Stone Size - Use 2" stone, or reclaimed or recycled concrete equivalent.
- Length - As required, but not less than 50 feet (except on a single residence lot where a 30 foot minimum length would apply).
- Thickness - Not less than six (6) inches.
- Width - Twenty (20) foot minimum, but not less than the full width at points where ingress or egress occurs.
- Filter Cloth - Will be placed over the entire area prior to placing of stone. Filter will not be required on a single family residence lot.
- Surface Water - All surface water flowing or diverted toward construction entrances shall be piped across the entrance. If piping is impractical, a mountable berm with 5:1 slopes will be permitted.
- Maintenance - The entrance shall be maintained in a condition which will prevent tracking or flowing of sediment onto public rights-of-way. This may require periodic top dressing with additional stone as conditions demand and repair and/or cleanout of any measures used to trap sediment. All sediment spilled, dropped, washed or tracked onto public rights-of-way must be removed immediately.
- Washing - Wheels shall be cleaned to remove sediment prior to entrance onto public rights-of-way. When washing is required, it shall be done on an area stabilized with stone and which drains into an approved sediment trapping device.
- Periodic inspection and needed maintenance shall be provided after each rain.

STABILIZED CONSTRUCTION ENTRANCE/WASHDOWN AREA
NOT TO SCALE

PLANNING AND ZONING FILE #1006
APPROVED AUGUST 3, 2006

UNDERGROUND UTILITIES HAVE BEEN PLOTTED FROM AVAILABLE INFORMATION AND THEREFORE THEIR LOCATIONS SHALL BE CONSIDERED APPROXIMATE ONLY. THE VERIFICATION OF THE LOCATION OF ALL UNDERGROUND UTILITIES, EITHER SHOWN OR NOT SHOWN ON THESE PLANS SHALL BE THE RESPONSIBILITY OF THE CONTRACTOR, AND SHALL BE LOCATED PRIOR TO ANY GRADING OR CONSTRUCTION OF THE IMPROVEMENTS.