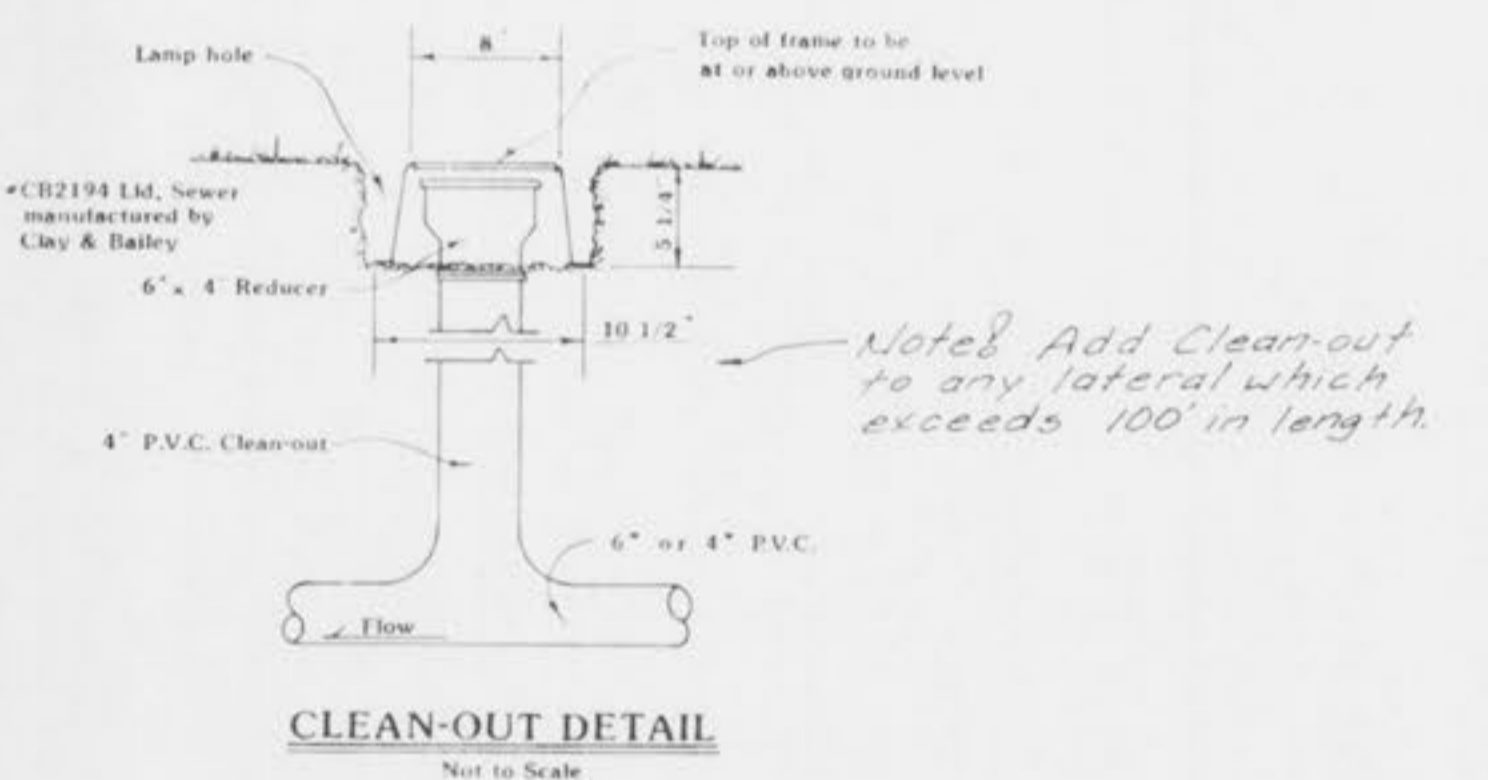
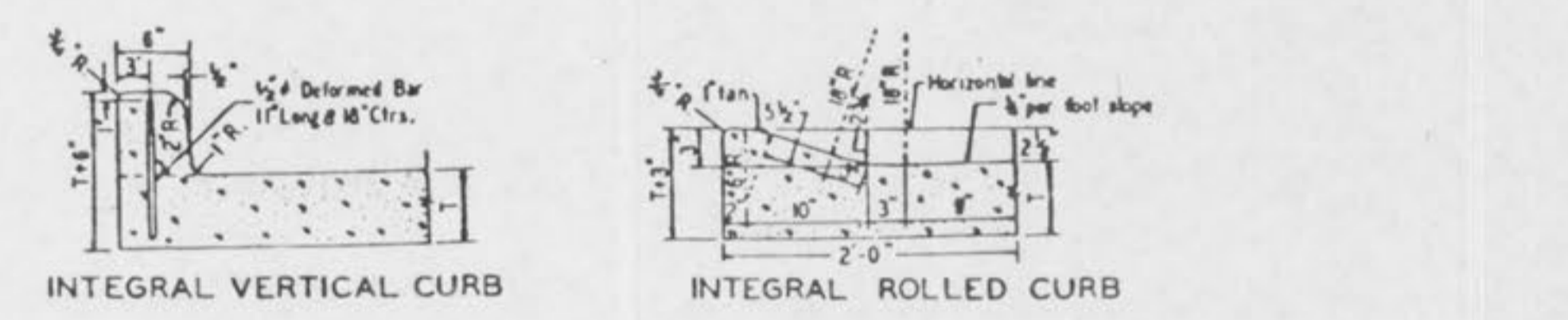
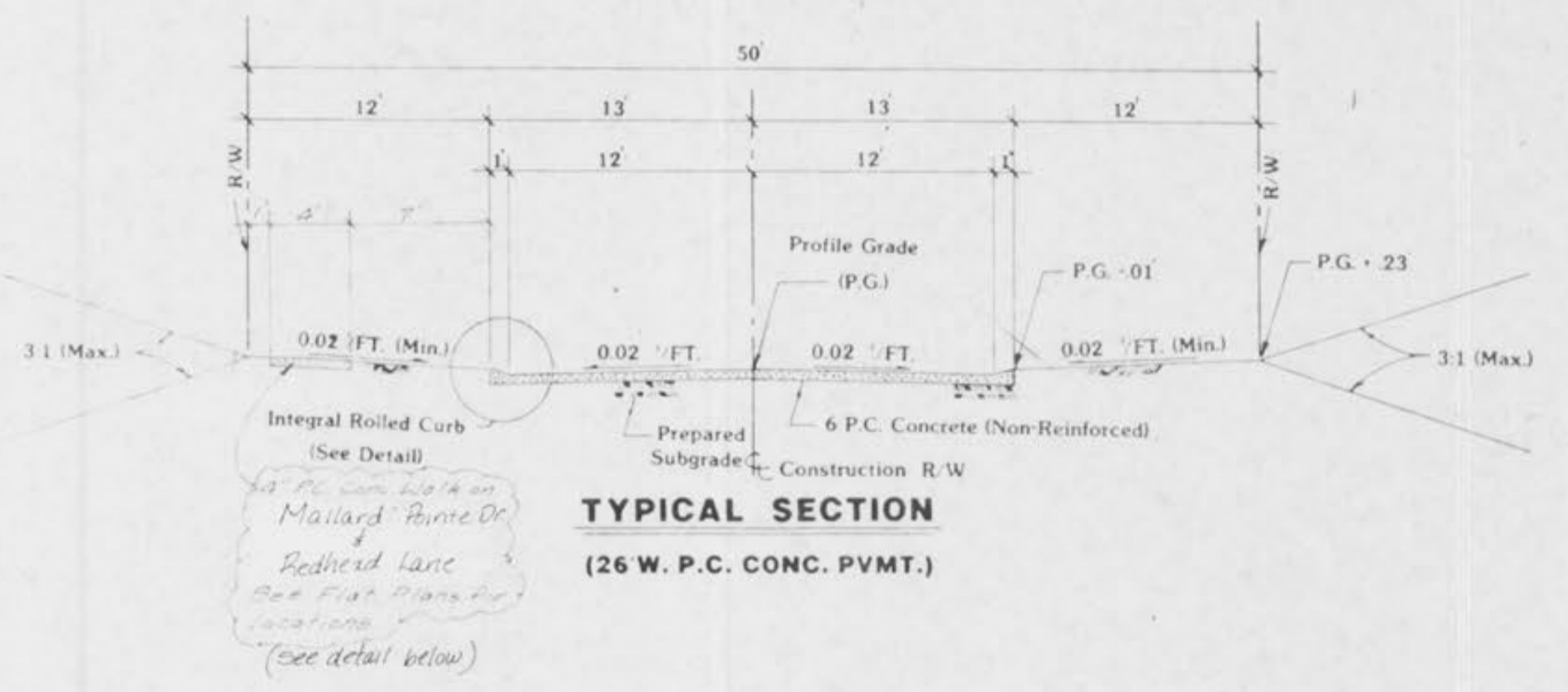
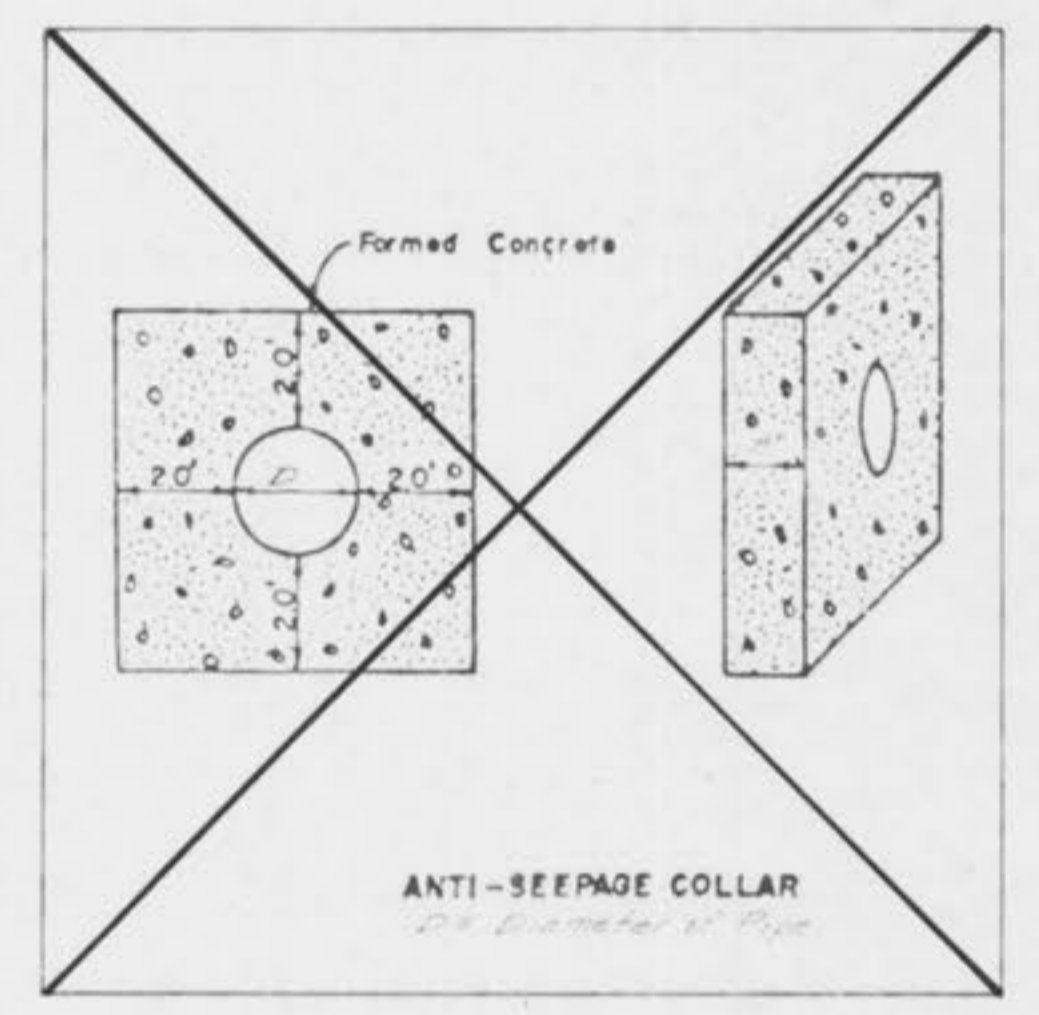
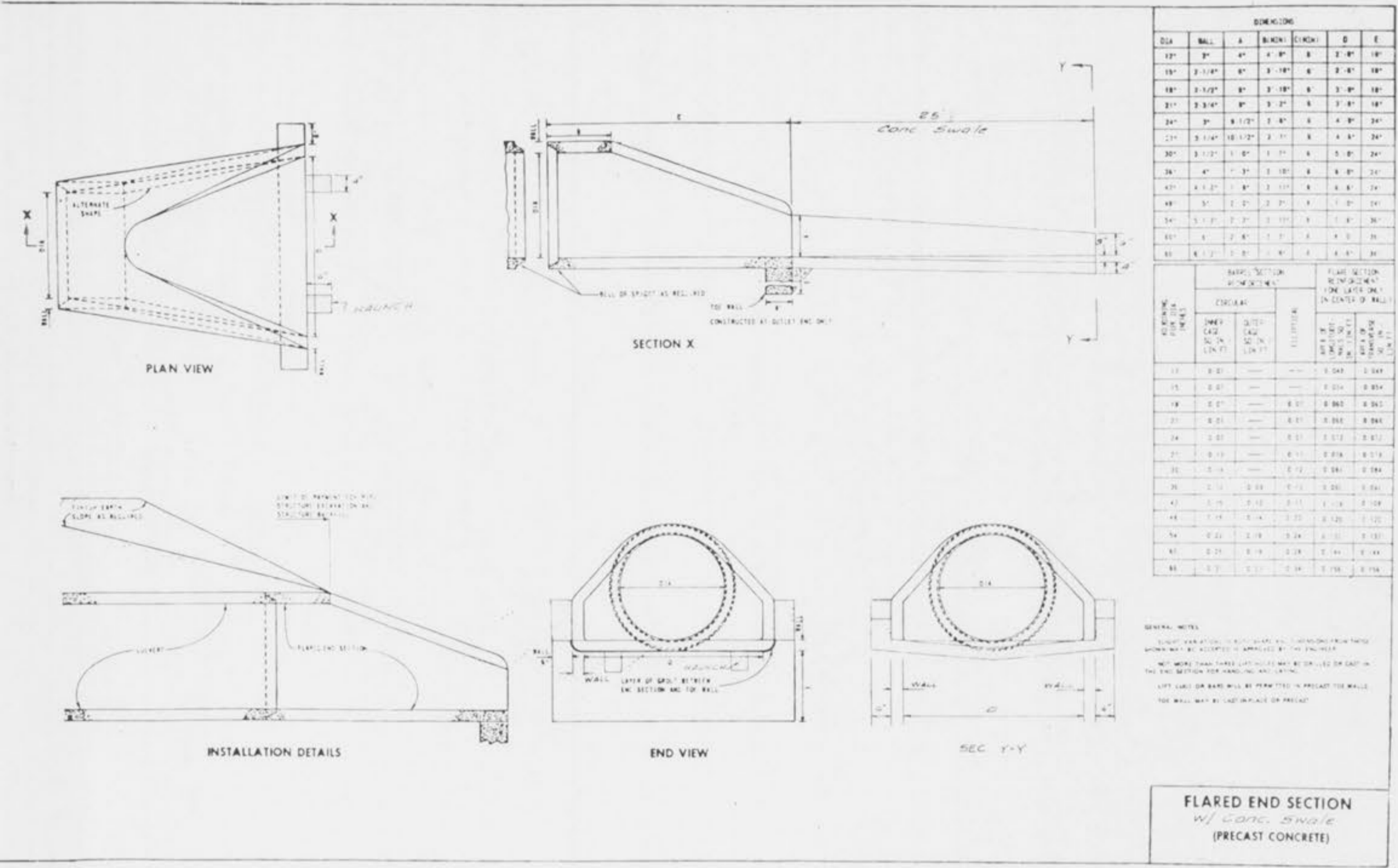
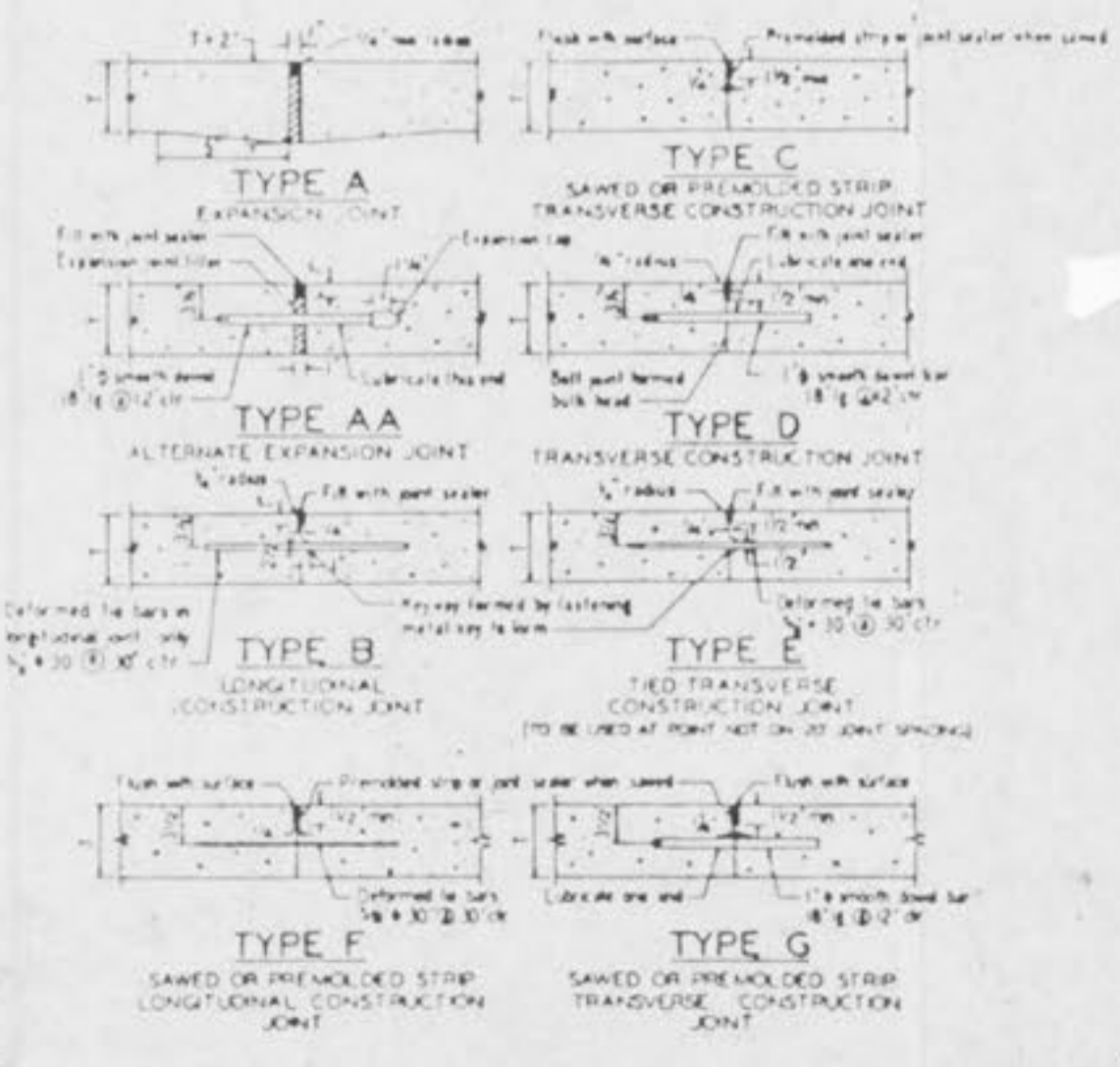
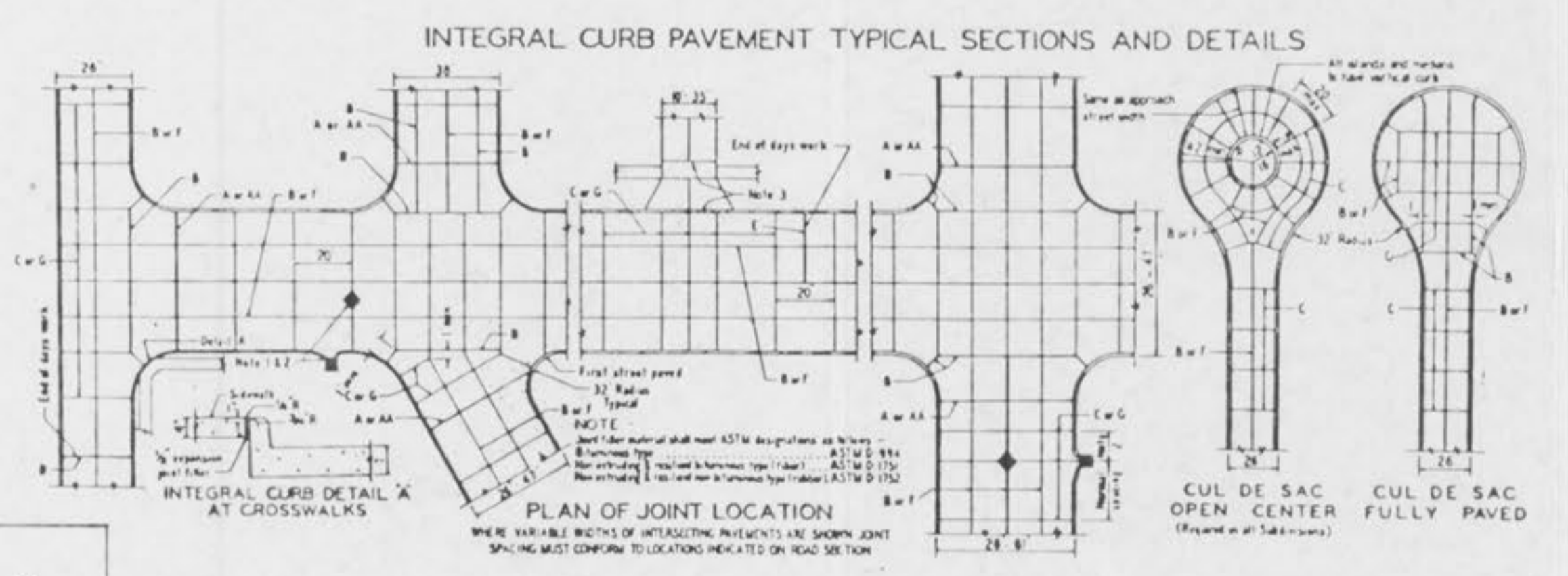
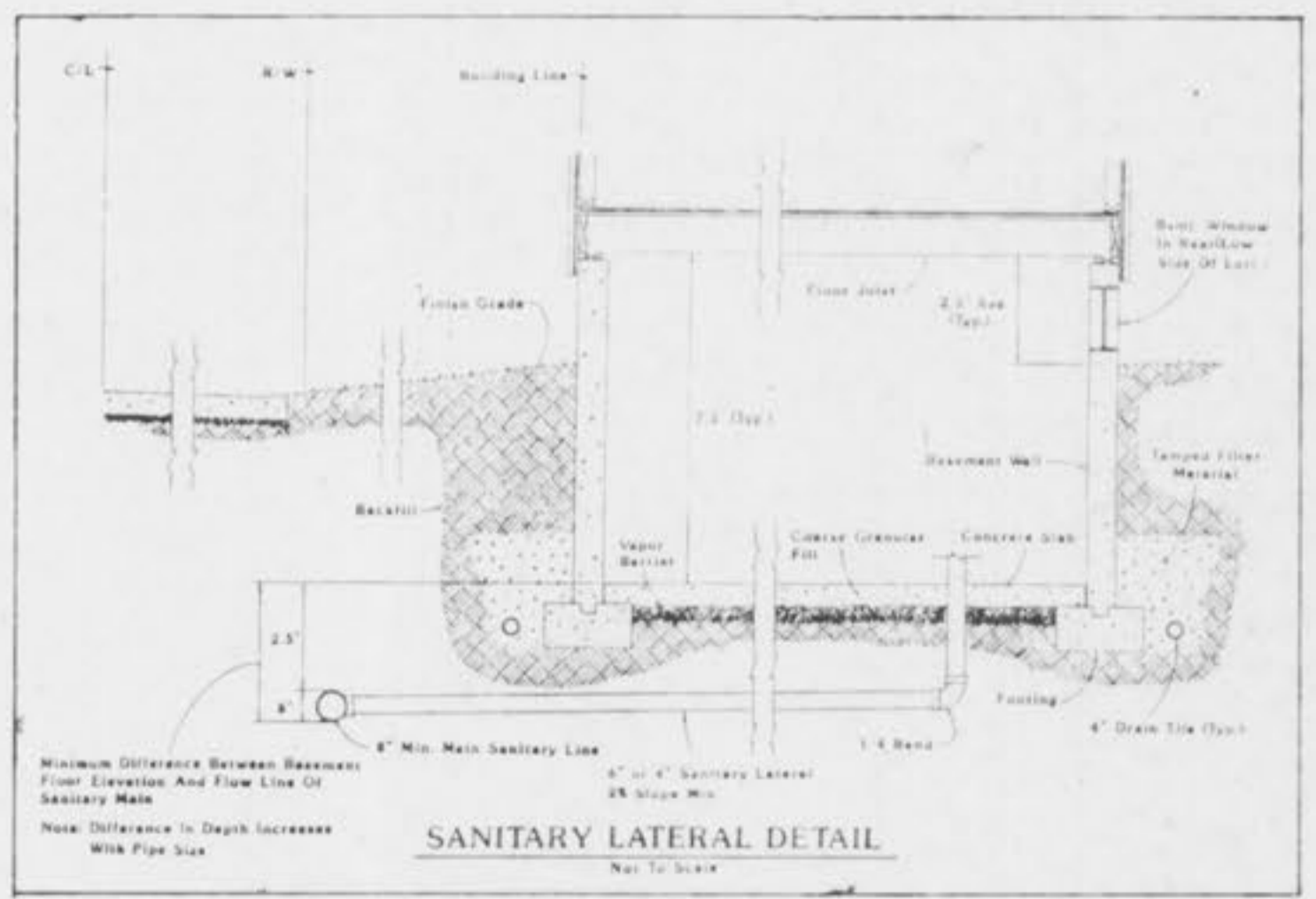
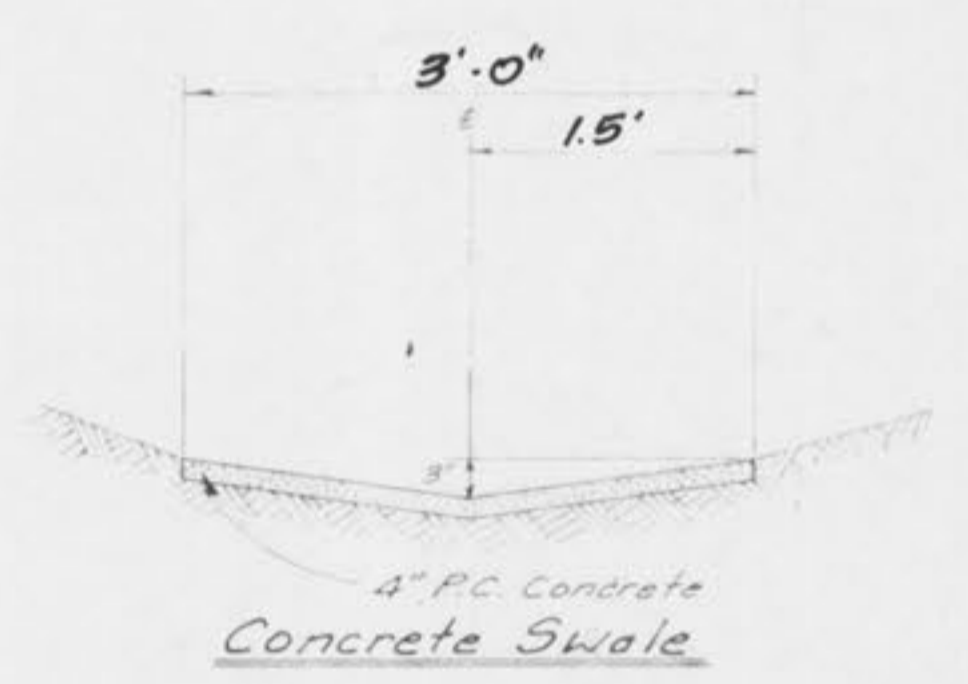
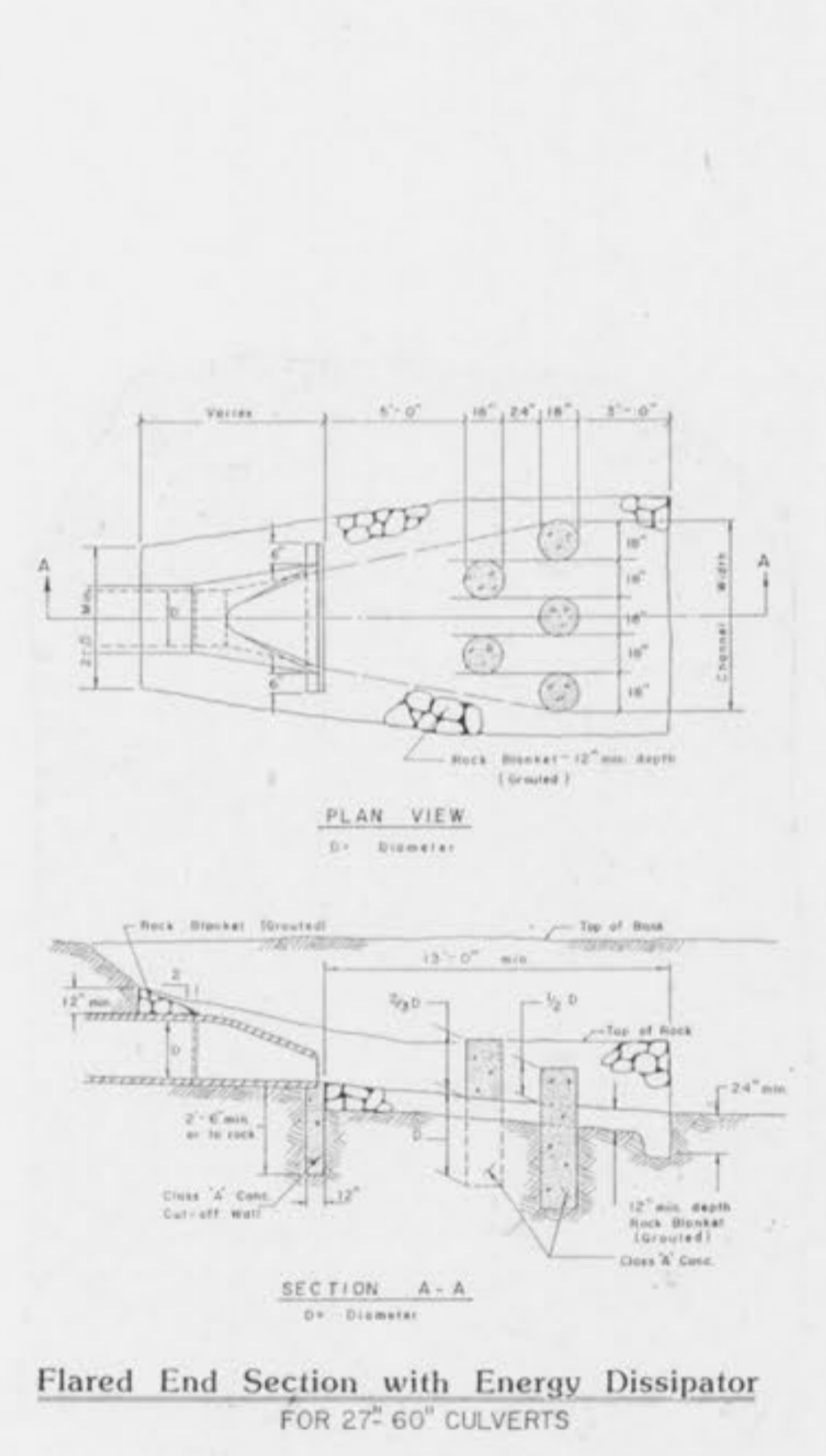


Rev. 7-27-90 Job
 Rev. 8-29-90 Job
 Rev. 8-30-90 Job



Note: Add Clean-out to any lateral which exceeds 100' in length.



- All catch basins shall be separate from the pavement and curb by expansion joint material extending completely through curb and slab. Multiple castings within the pavement limits shall be broom as shown in the "Manhole Construction Details".
- When a joint falls within 5 ft. of or contacts basin, manhole, or other structure, shorten curb or move basin in either direction to permit joint to fall on road structure and at or between corners of rectangular structures.
- Driveway configurations are shown in the "Entrance Construction Details".
- Construction joint and dowel bars may be omitted when curb is broom integral with pavement.
- Minimum thickness for pavement is:

CONCRETE (FT)	
Local or Minor Streets	6"
Major or Industrial Streets	8"
Arterial or Industrial Streets	10"

 Note: material under pavement will be made with 4 inches of Rolled Stone Base.
- For minor rural or urban and minor subdivision pavements, 1/2" thick rebarbed, 1/2" x 3/8" deformed tie bars 18" on center shall be used for TYPE B longitudinal joints.
- Refer to Exhibit 13A for joint and bar requirements for different street classifications. Note that width and location of each square portion of the pavement surface shall be the type and location of joint required.
- Transverse or longitudinal construction joints in all paved pavements may be made with grooves or keys, if such device has been approved in advance by the St. Louis County Department of Highway and Traffic.
- The locations of the Type B and Type F longitudinal construction joints in above sections may be interchanged for the different widths of construction if approval is obtained.

