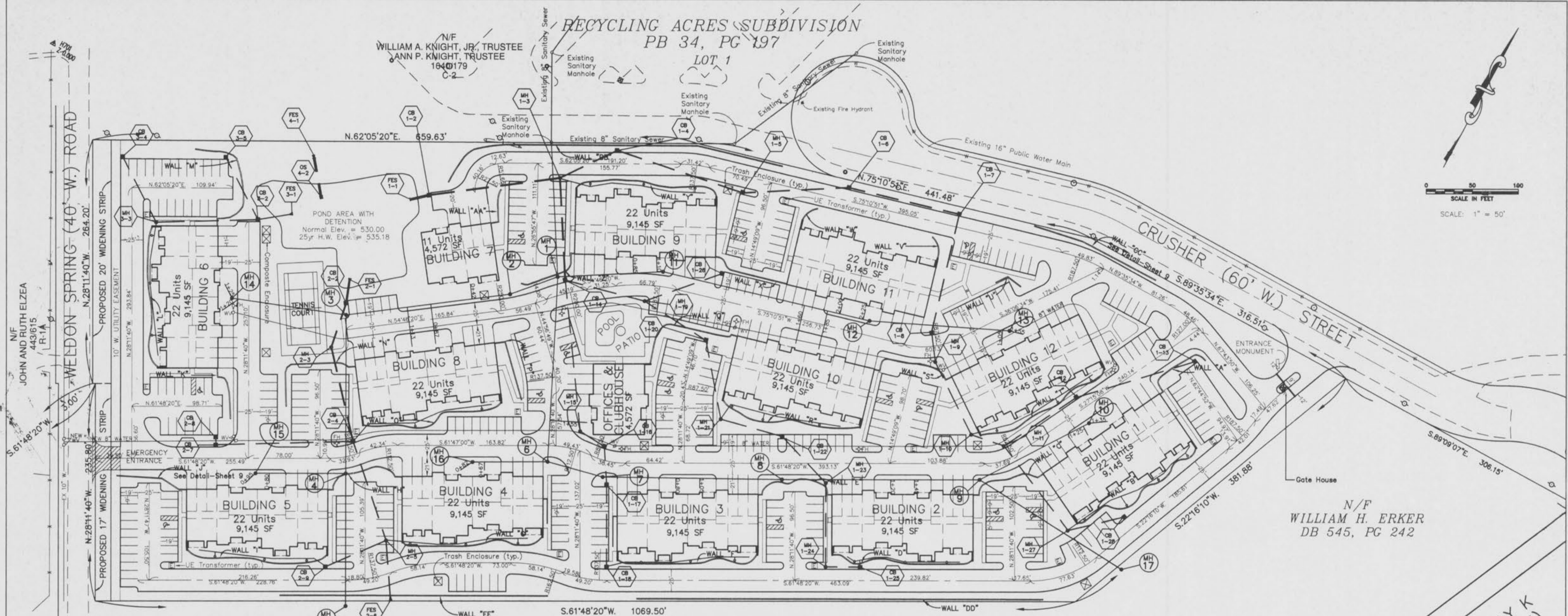


RECYCLING ACRES SUBDIVISION
PB 34, PG 197

LOT 1

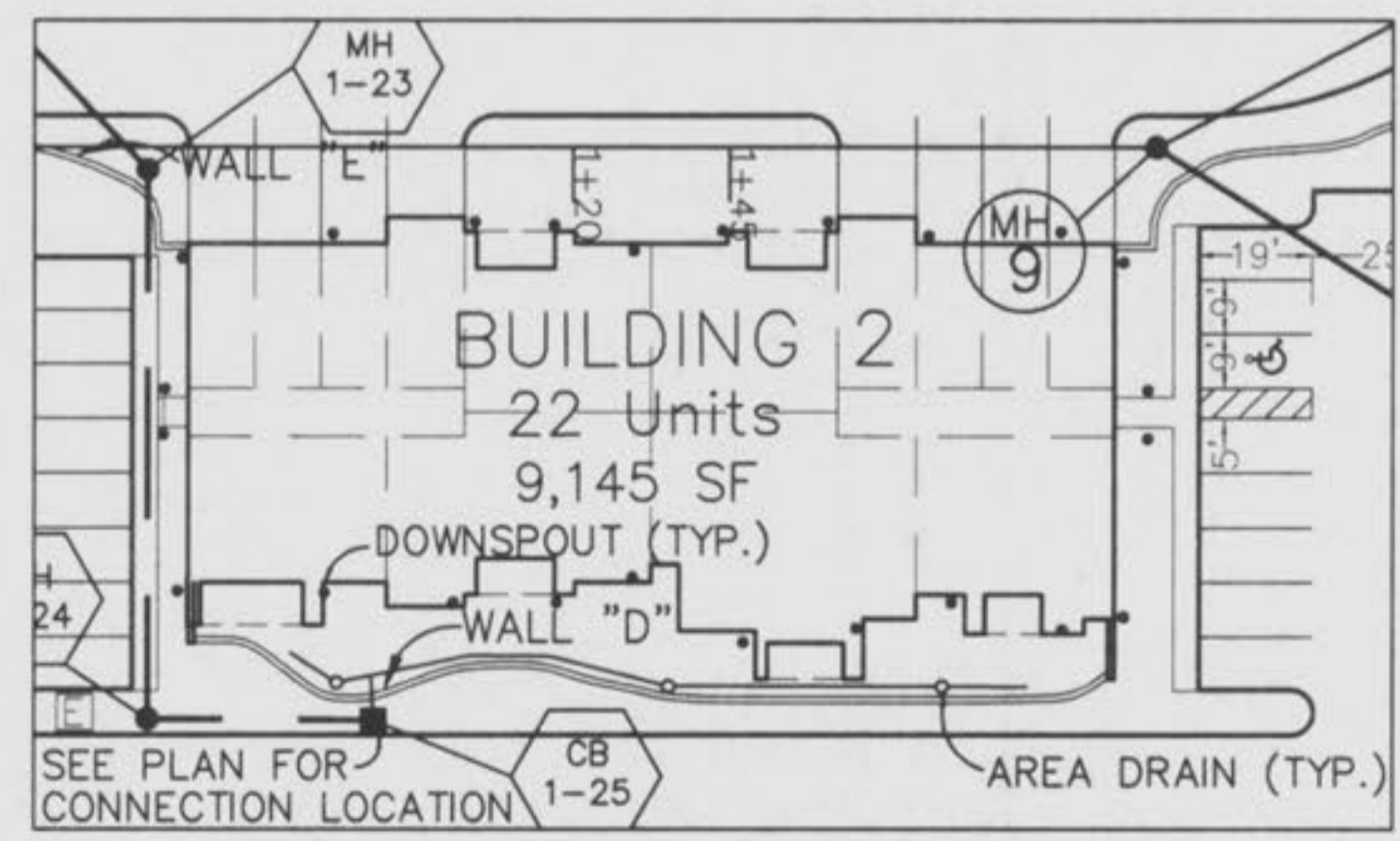
N/F
WILLIAM A. KNIGHT, JR., TRUSTEE
ANN P. KNIGHT, TRUSTEE
164@179
C-2



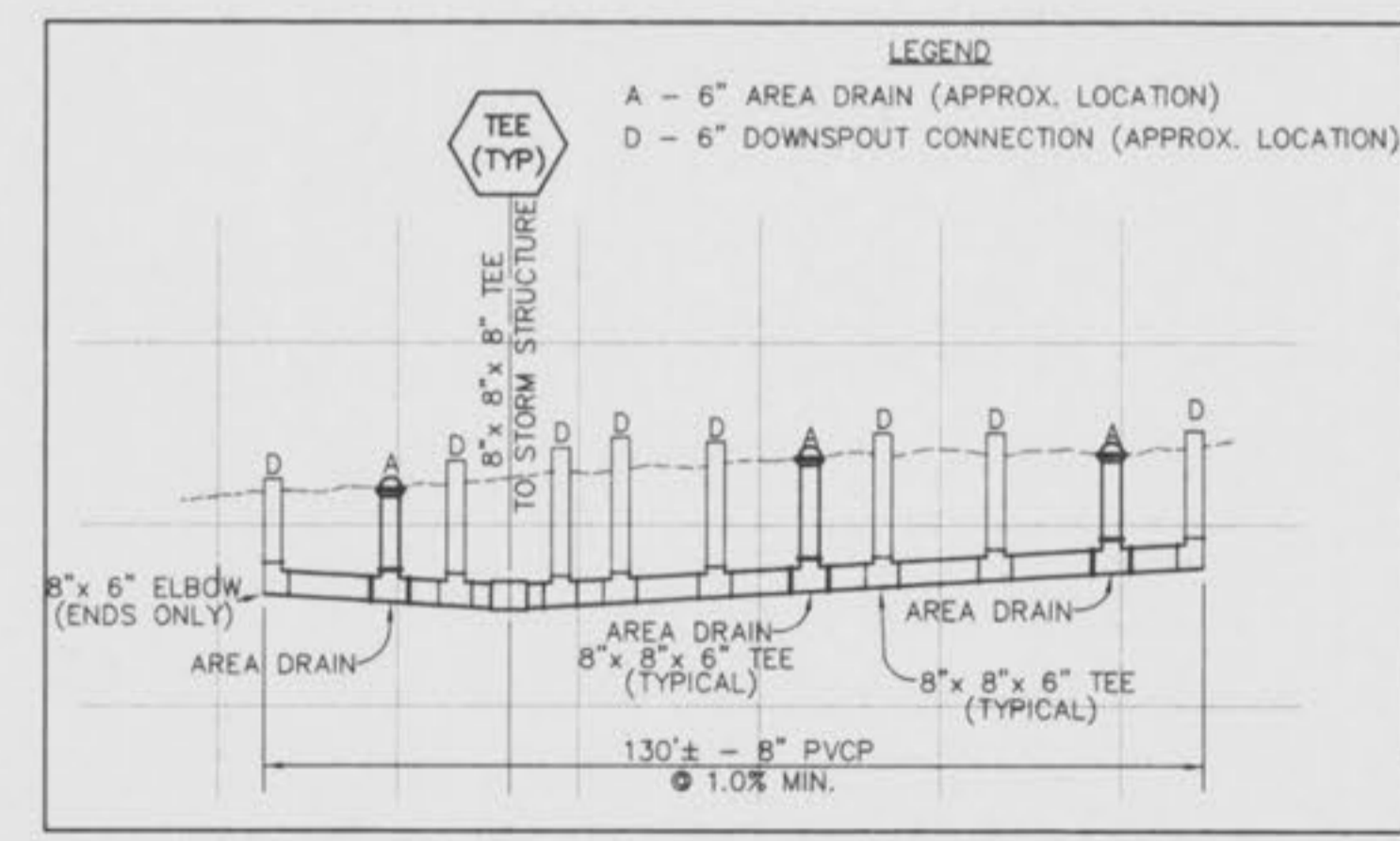
N/F
WILLIAM H. ERKER
DB 545, PG 242

N/F
WILLIAM H. ERKER
DB 545, PG 242

STATE HIGHWAY K
(VARIABLE WIDTH)



AREA DRAINS (TYP.)
SCALE: 1" = 30'



TYPICAL AREA DRAIN PROFILE
N.T.S.

REVISIONS 2. 6/16/98 CEY Revisions per City of O'Fallon 1. 5/29/98 CEY Revisions per City of O'Fallon	
PLAN SHEET MALLARD'S LANDING	
Prepared for: MALLARD'S LANDING, L.L.C. 1714 Deer Tracks Trail - 2nd Floor Town and Country, Missouri 63131 (314) 965-6565	
the clayton engineering company	Designed KRS Drawn KRS, CEY, KAM Checked ERD Date Project Number 97454 Sheet Number 2 of 13
ENGINEERS • SURVEYORS • PLANNERS 12755 OLIVE BOULEVARD - SUITE 100 ST. LOUIS, MISSOURI 63141-6200 (314) 542-0009 FAX (314) 542-9050	

The original of this drawing is on file at the office of The Clayton Engineering Company. Any modifications to this drawing shall release said Clayton Engineering Company, the Engineer and/or the Surveyor whose seal appears hereon from any liability resulting from said unauthorized modifications.