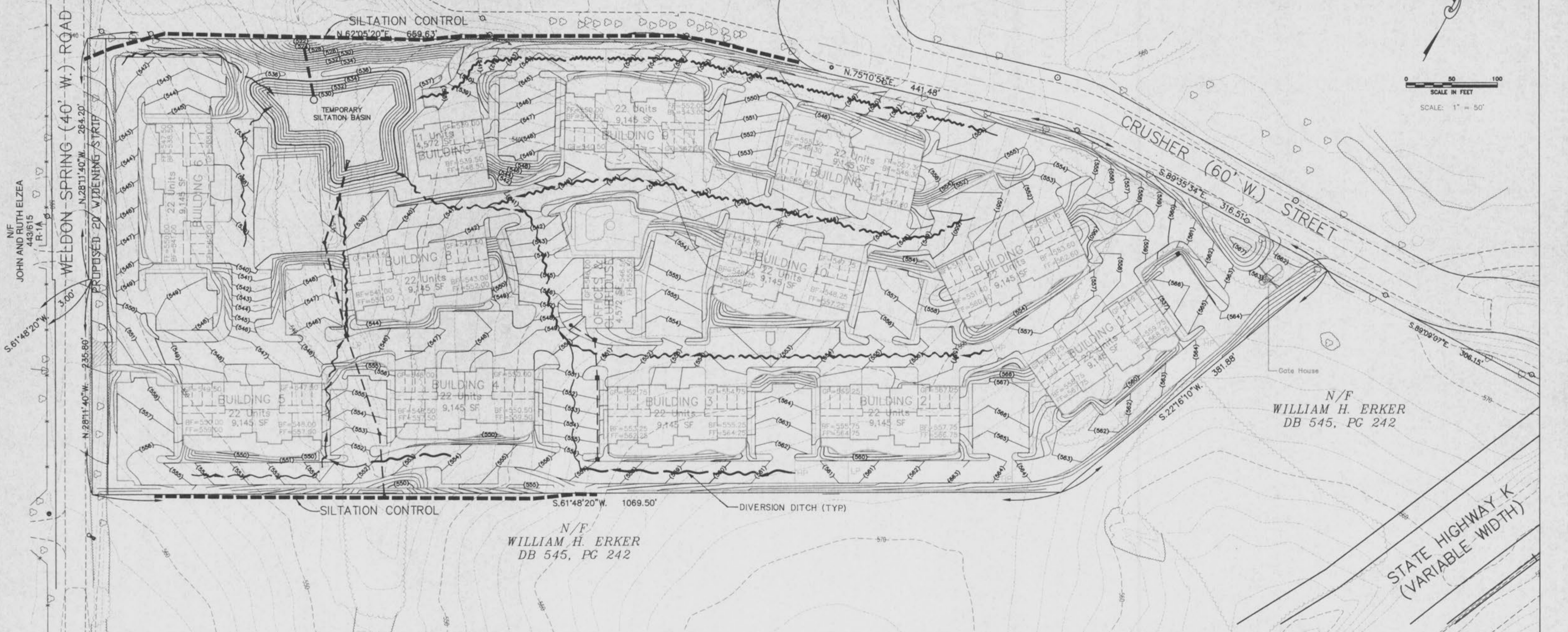


RECYCLING ACRES SUBDIVISION
PB 34, PG 197

WILLIAM A. KNIGHT, JR., TRUSTEE
JANN P. KNIGHT, TRUSTEE
1840179
C-2

LOT 1



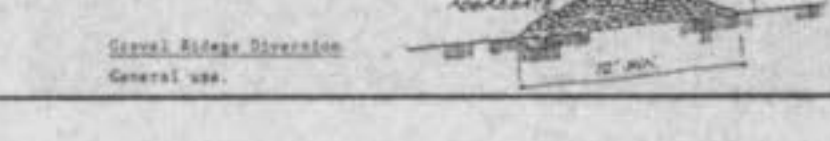
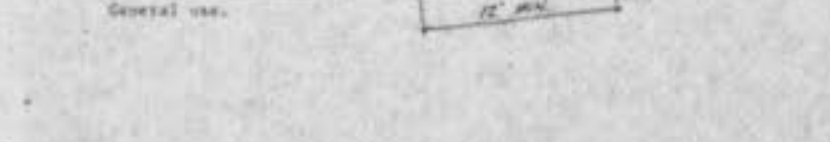
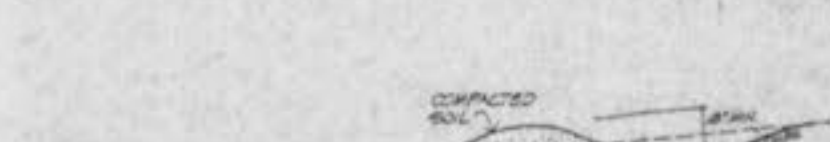
N/F JOHN AND RUTH ELZEA
449615
R-1A

N/F WILLIAM H. ERKER
DB 545, PG 242

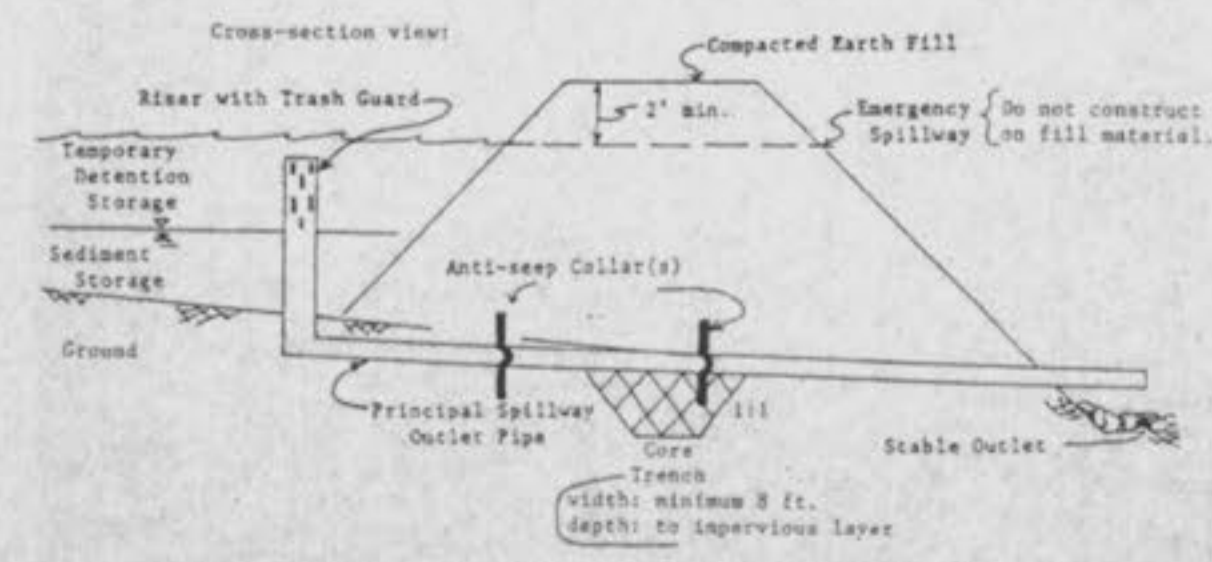
N/F WILLIAM H. ERKER
DB 545, PG 242

STATE HIGHWAY K
(VARIABLE WIDTH)

REVISIONS
For Urban Development Sites
APPENDIX B

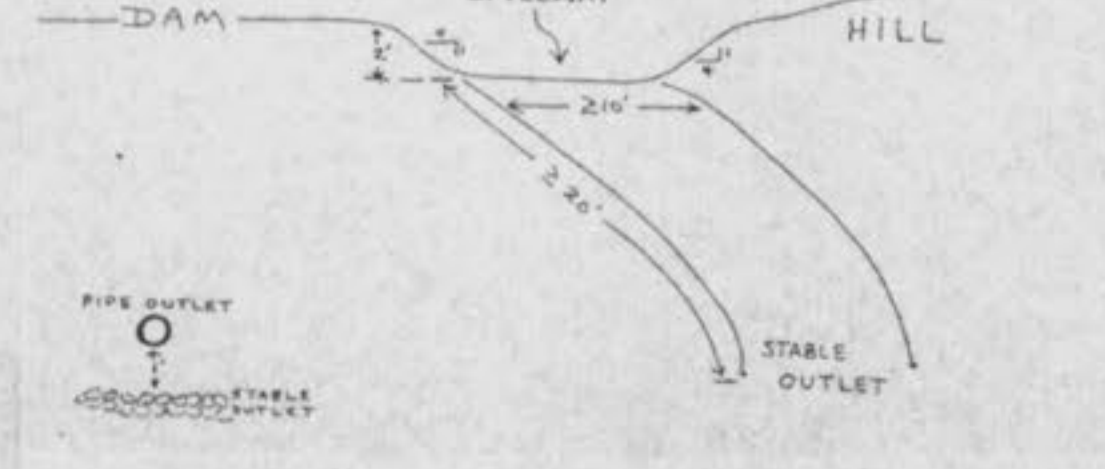


SEDIMENT BASIN
For Urban Development Sites
APPENDIX C



** Retention basin construction is identical with principal spillway pipe installed at an elevation that allows additional water storage.

EMERGENCY SPILLWAY



The original of this drawing is on file at the office of The Clayton Engineering Company. Any modifications to this drawing shall release said Clayton Engineering Company, the Engineer and/or the Surveyor whose seal appears hereon from any liability resulting from said unauthorized modifications.

INTERIM GRADING PLAN
MALLARD'S LANDING

Prepared for:
MALLARD'S LANDING, L.L.C.
1714 Deer Tracks Trail - 2nd Floor
Town and Country, Missouri 63131
(314) 965-6565



the clayton engineering company
ENGINEERS • SURVEYORS • PLANNERS
12785 OLIVE BOULEVARD - SUITE 100
ST. LOUIS, MISSOURI 63141-6200
(314) 542-0009 FAX (314) 542-9050

Designed KRS
Drawn KRS, CEY, KAM
Checked ERD
Date APRIL 13, 1998
Project Number 97454
Sheet Number 3A of 13