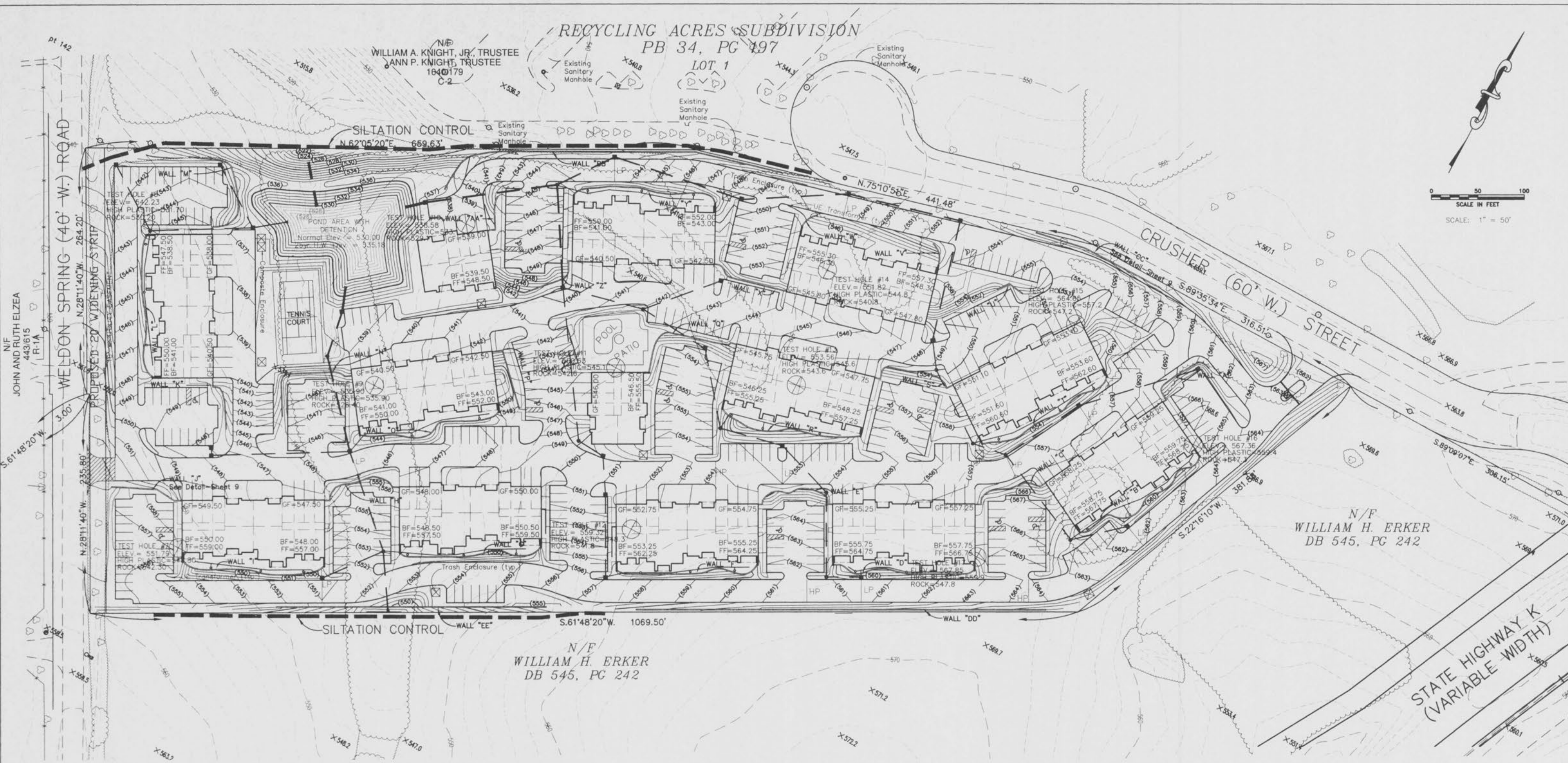


RECYCLING ACRES SUBDIVISION  
PB 34, PG 197

WILLIAM A. KNIGHT, JR., TRUSTEE  
ANN P. KNIGHT, TRUSTEE  
1040179  
C-2

LOT 1



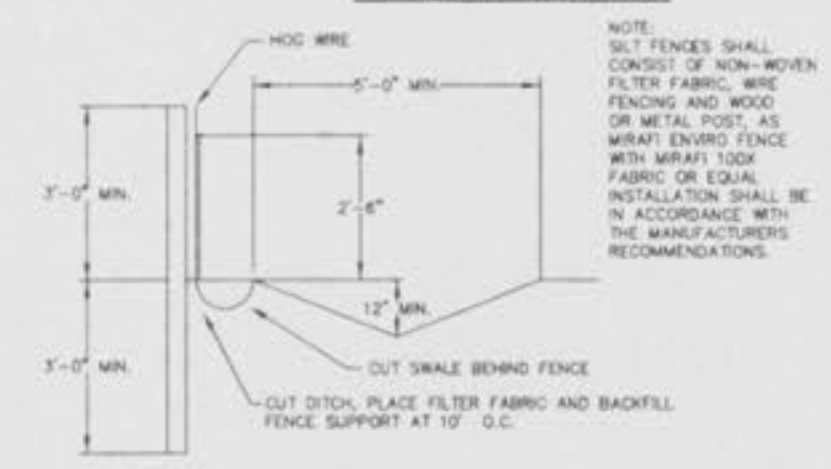
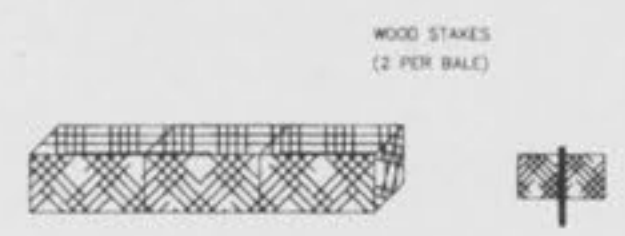
N/F  
WILLIAM H. ERKER  
DB 545, PG 242

N/F  
WILLIAM H. ERKER  
DB 545, PG 242

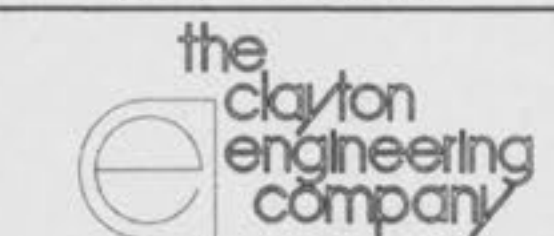
STATE HIGHWAY K  
(VARIABLE WIDTH)

**EARTHWORK QUANTITIES**

Earth Cut = 48,436 cu. yds.  
Earth Fill = 43,790 cu. yds.  
10% Shrink = 4,379 cu. yds.  
**TOTAL FILL = 48,169 cu. yds.**



1. 5/29/98 CEY Revisions per City of O'Fallon  
REVISIONS  
**GRADING PLAN**  
**MALLARD'S LANDING**  
Prepared for:  
**MALLARD'S LANDING, L.L.C.**  
1714 Deer Tracks Trail - 2nd Floor  
Town and Country, Missouri 63131  
(314) 965-6565



ENGINEERS • SURVEYORS • PLANNERS  
12755 OLIVE BOULEVARD - SUITE 100  
ST. LOUIS, MISSOURI 63141-6200  
(314) 542-0009 FAX (314) 542-9050

Designed KRS  
Drawn KRS, CEY, KAM  
Checked ERD  
Date  
Project Number  
**97454**  
Sheet Number  
**3 of 13**

The original of this drawing is on file at the office of The Clayton Engineering Company. Any modifications to this drawing shall release said Clayton Engineering Company, the Engineer and/or the Surveyor whose seal appears hereon from any liability resulting from said unauthorized modifications.