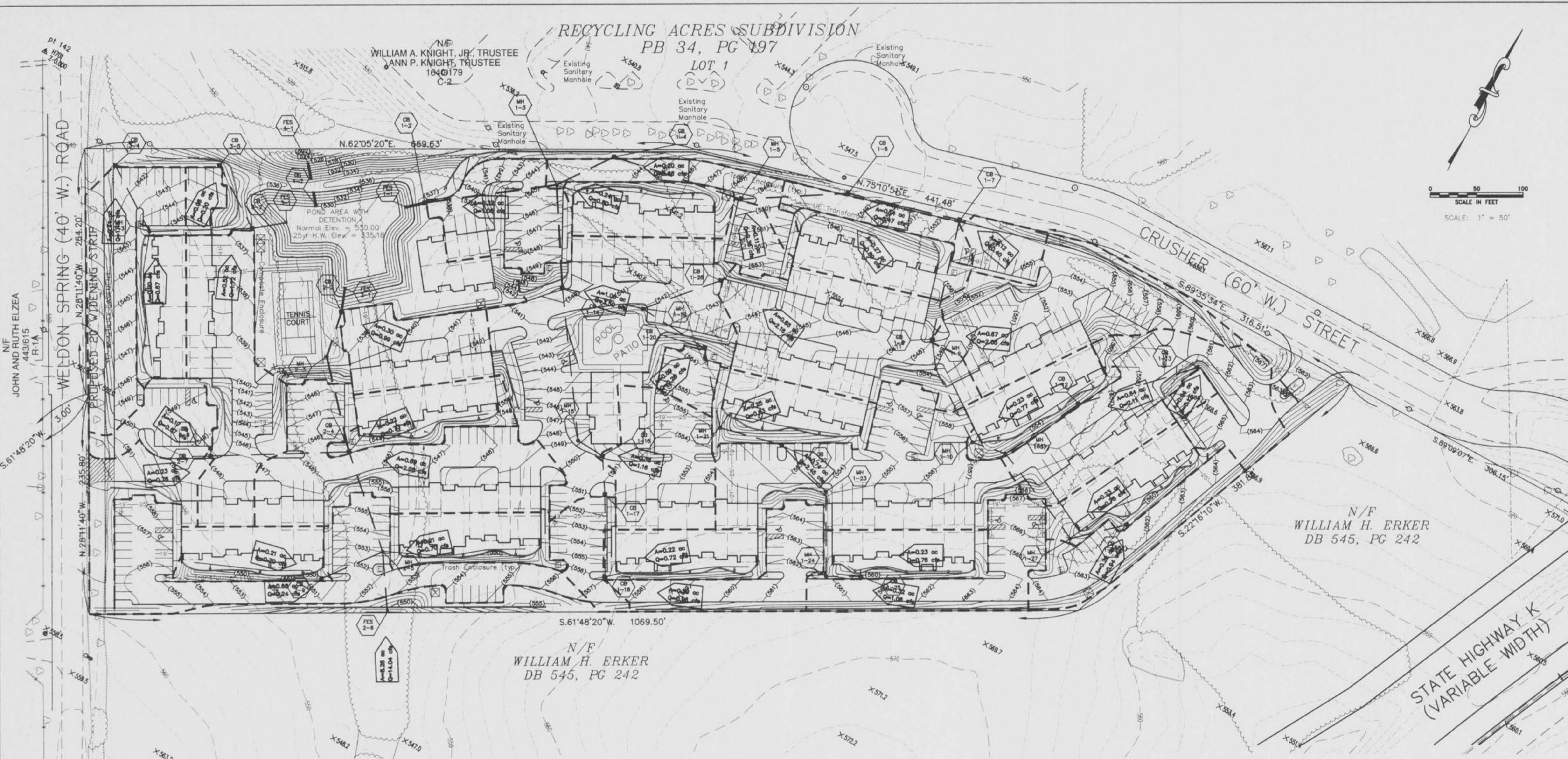


RECYCLING ACRES SUBDIVISION  
PB 34, PG 197

N/E  
WILLIAM A. KNIGHT, JR., TRUSTEE  
ANN P. KNIGHT, TRUSTEE  
1040179  
C-2

LOT 1



N/F  
JOHN AND RUTH ELZEA  
443615  
R-1A

N/F  
WILLIAM H. ERKER  
DB 545, PG 242

N/F  
WILLIAM H. ERKER  
DB 545, PG 242

1. 5/29/98 CEY Revisions per City of O'Fallon	
REVISIONS	
DRAINAGE AREA MAP	
<b>MALLARD'S LANDING</b>	
Prepared for:	
MALLARD'S LANDING, L.L.C. 1714 Deer Tracks Trail - 2nd Floor Town and Country, Missouri 63131 (314) 965-6565	
 the clayton engineering company	Designed KRS
	Drawn KRS, CEY, KAM
	Checked ERD
	Date
	Project Number 97454
	Sheet Number 4 of 13
ENGINEERS • SURVEYORS • PLANNERS 12755 OLIVE BOULEVARD - SUITE 100 ST. LOUIS, MISSOURI 63141-6200 (314) 542-0009 FAX (314) 542-9050	

The original of this drawing is on file at the office of The Clayton Engineering Company. Any modifications to this drawing shall release said Clayton Engineering Company, the Engineer and/or the Surveyor whose seal appears hereon from any liability resulting from said unauthorized modifications.