

RECYCLING ACRES SUBDIVISION
PB 34, PG 197

N/F
WILLIAM A. KNIGHT, JR., TRUSTEE
ANN P. KNIGHT, TRUSTEE
164D179
C-2

LOT 1

N/F
WILLIAM H. ERKER
DB 545, PG 242

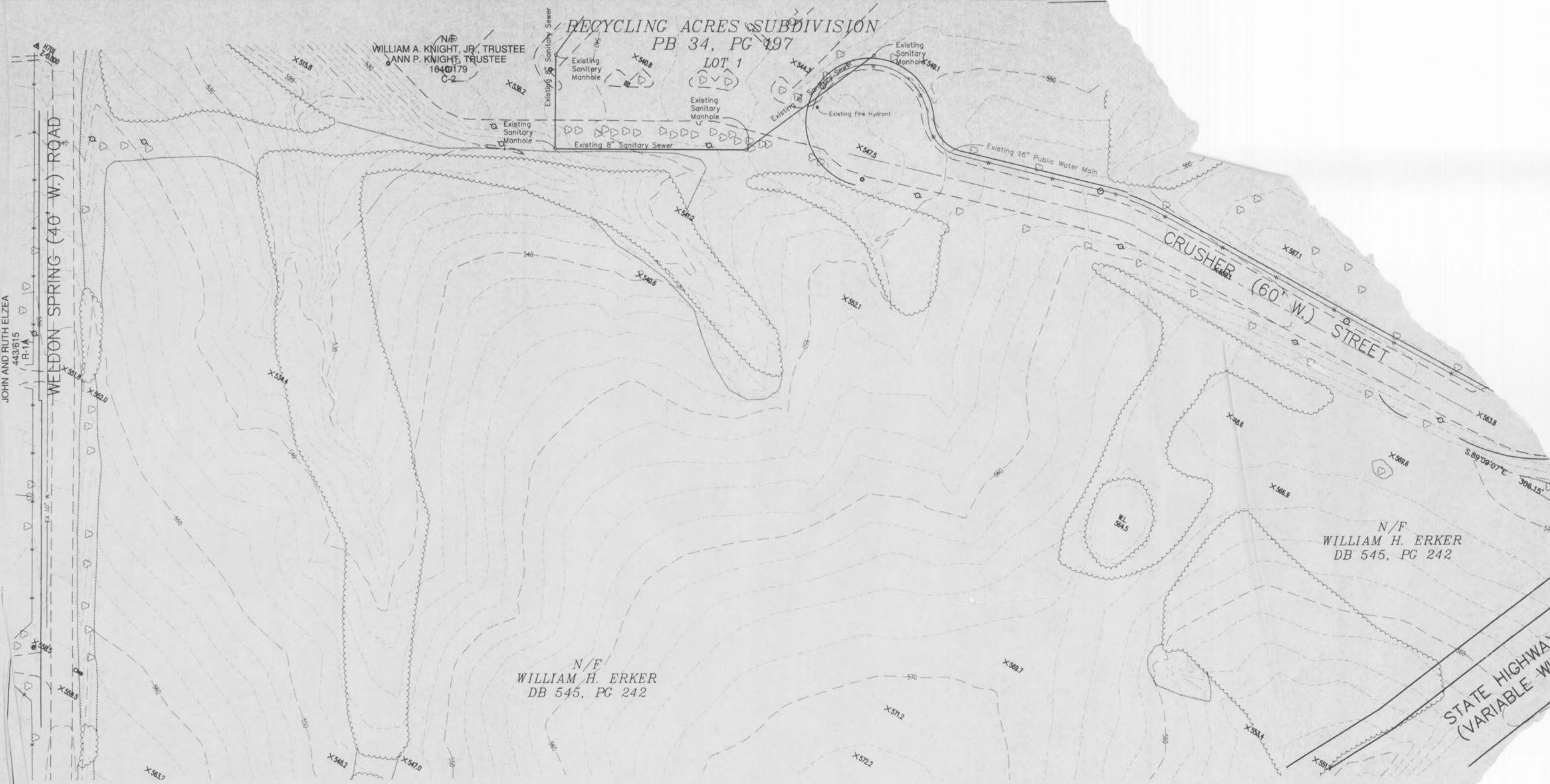
N/F
WILLIAM H. ERKER
DB 545, PG 242

STATE HIGHWAY K
(VARIABLE WIDTH)

WELDON SPRING (40' W.) ROAD

CRUSHER (60' W.) STREET

JOHN AND RUTH ELZEA
443615
TR-1A



Original of this drawing is on file at the office of Clayton Engineering Company. Any modifications to this drawing shall release said Clayton Engineering Company, the Engineer and/or the Surveyor whose seal appears hereon from any liability resulting from said unauthorized modifications.

M
Prep