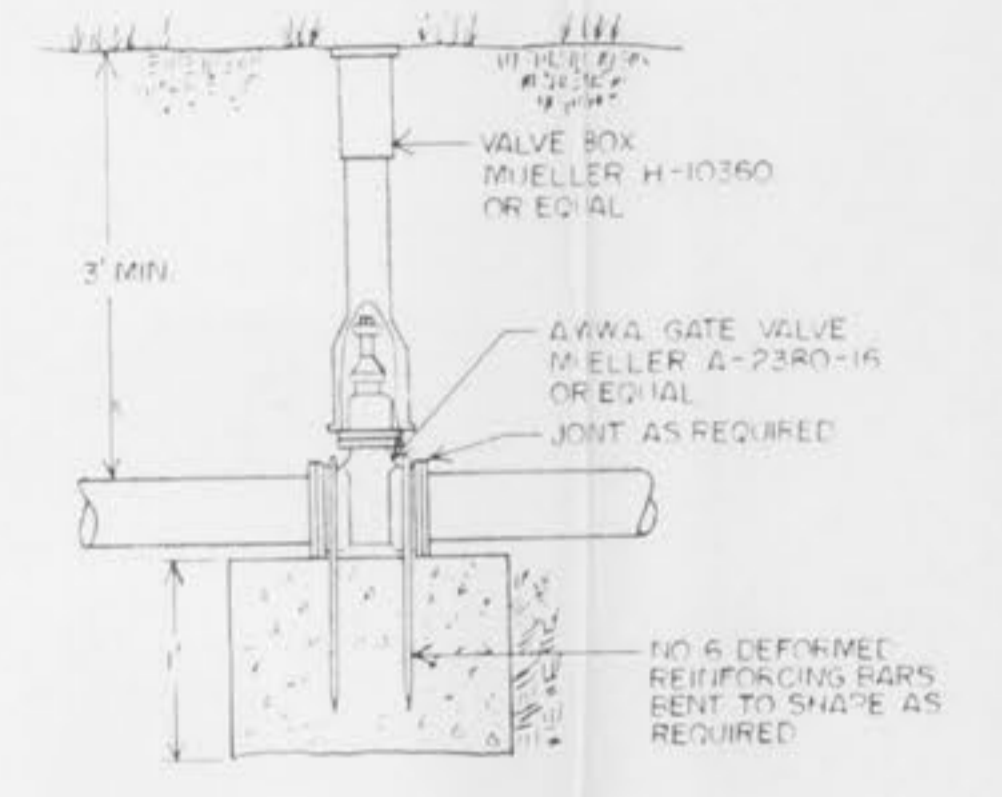
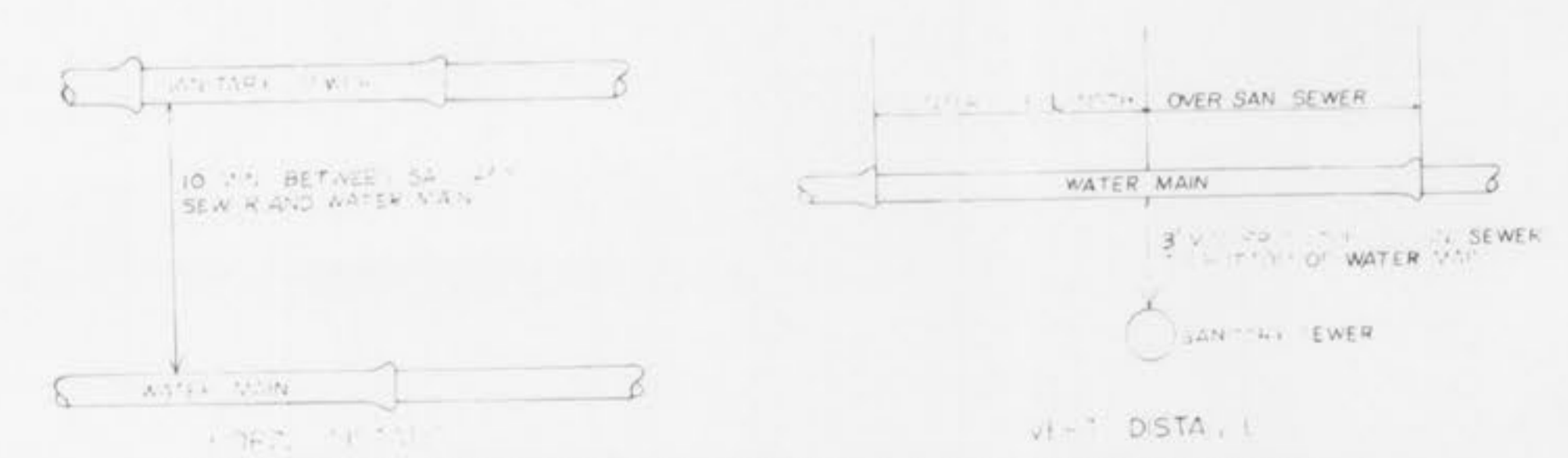
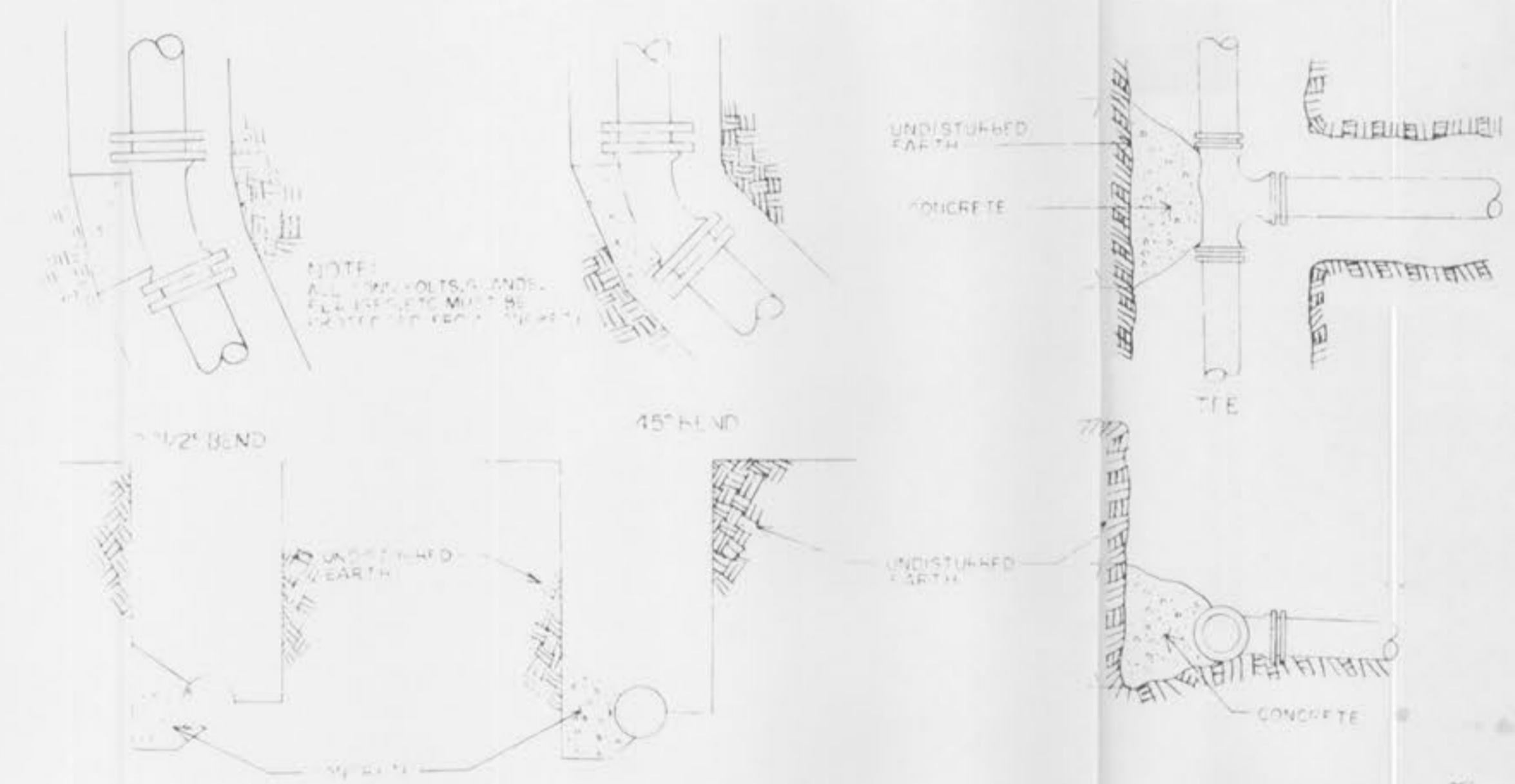
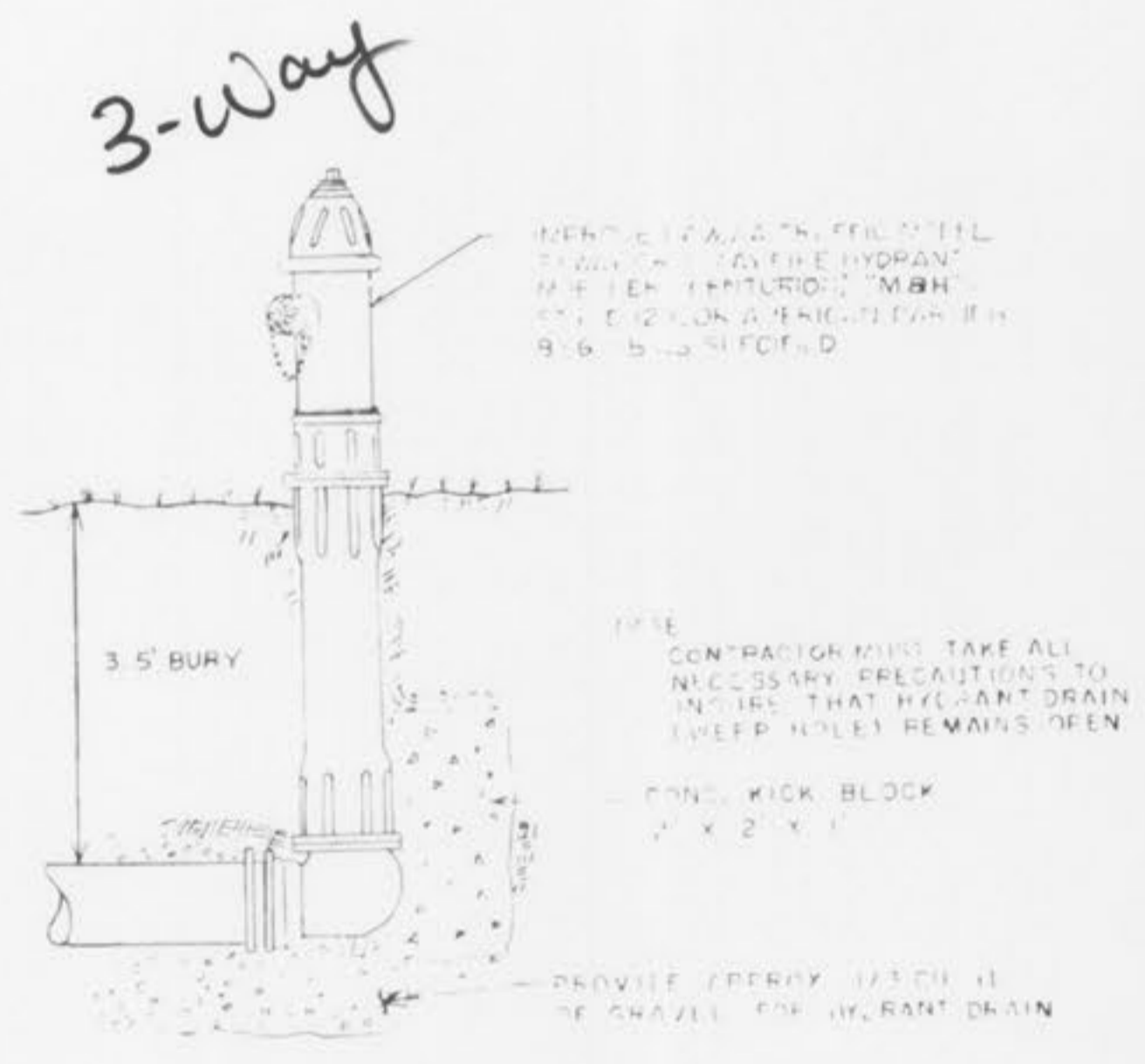
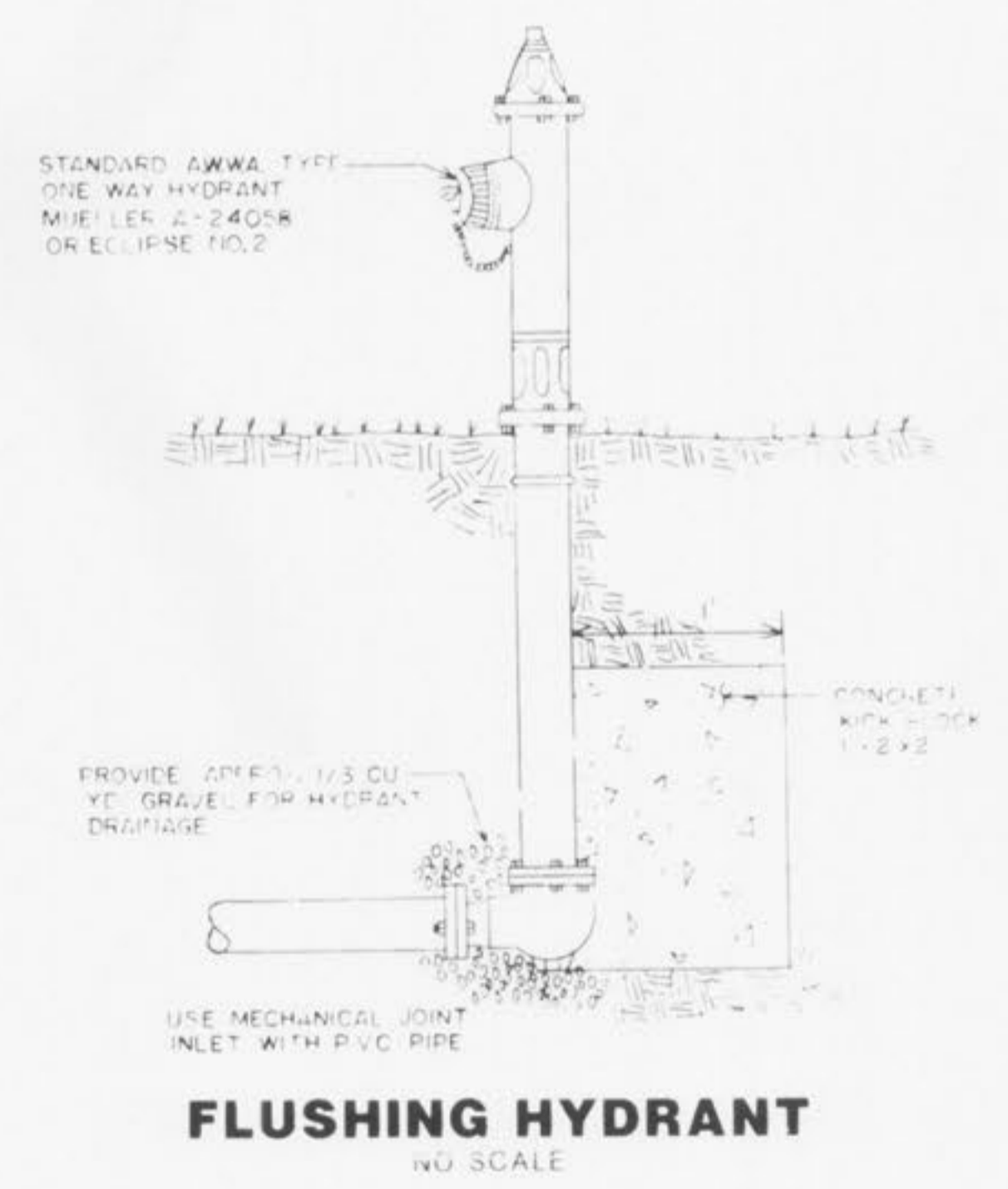


TYPICAL WATER MAIN INSTALLATION DETAILS
NO SCALE



GATE VALVE W / THRUST BLOCK DETAIL
NO SCALE



MAIN SIZE (D.I.)	MIN THRUST BLOCK BEARING DIMENSIONS TO BEAR AGAINST UNDISTURBED EARTH			
	45° BEND	22 1/2° BEND	TEE	CROSS
2"	1.5 x 1'	1.5 x 1'	1.5 x 1'	1.5 x 1'
4"	1.5 x 1'	1.5 x 1'	2 x 1'	1 x 1'
6"	1.5 x 1'	1.5 x 1'	2 x 1'	1 x 1'
8"	2 x 1'	1.5 x 1'	2 x 2.5'	2 x 2'
10"	2 x 2.5'	1.5 x 2'	2 x 3.0'	2 x 2'
12"	2 x 3.0'	1.5 x 2.5'	3 x 3.5'	2 x 2'
16"	3 x 4'	2 x 3'	4 x 4.5'	3 x 3.5'

ST. CHARLES COUNTY
PUBLIC WATER SUPPLY DISTRICT
NO. 2

Approved from Drawing by: COCHRAN ENGINEERING COMPANY, WASHINGTON, MISSOURI

APPROVED:

TYPICAL WATER INSTALLATION DETAILS

DATE: FEB. 88 SCALE: AS SHOWN SHEET NO. REVISIONS: