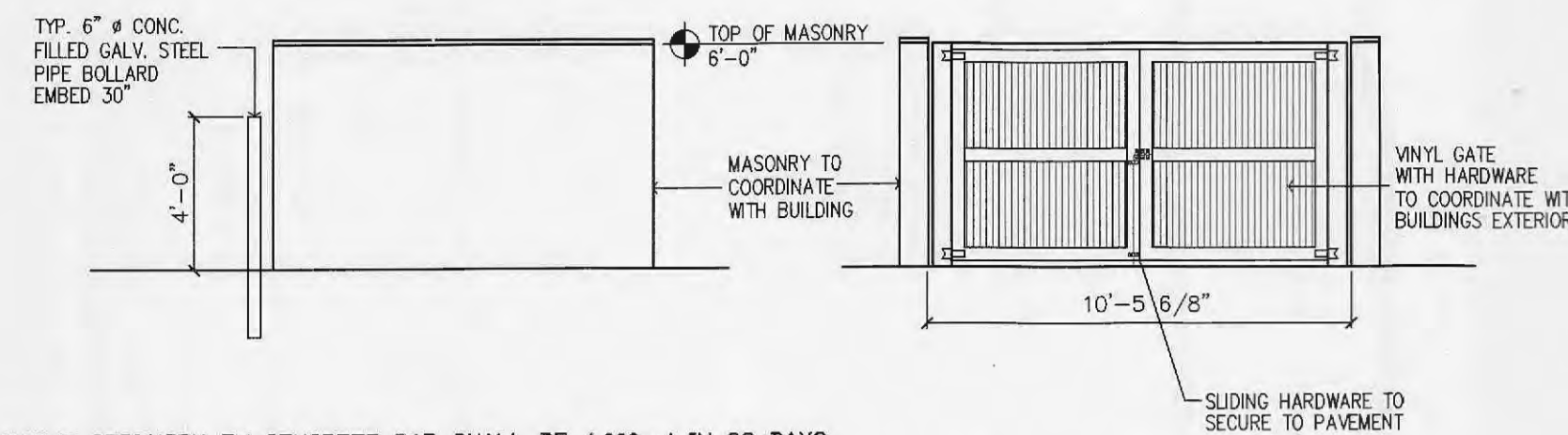


THIS DETAIL HAS BEEN PROVIDED FOR CONCEPTUAL APPROVAL ONLY. EXACT DETAIL OF MATERIAL AND CONSTRUCTION METHODS SHALL BE OUTLINES IN THE ARCHITECTURAL BUILDING PLANS.

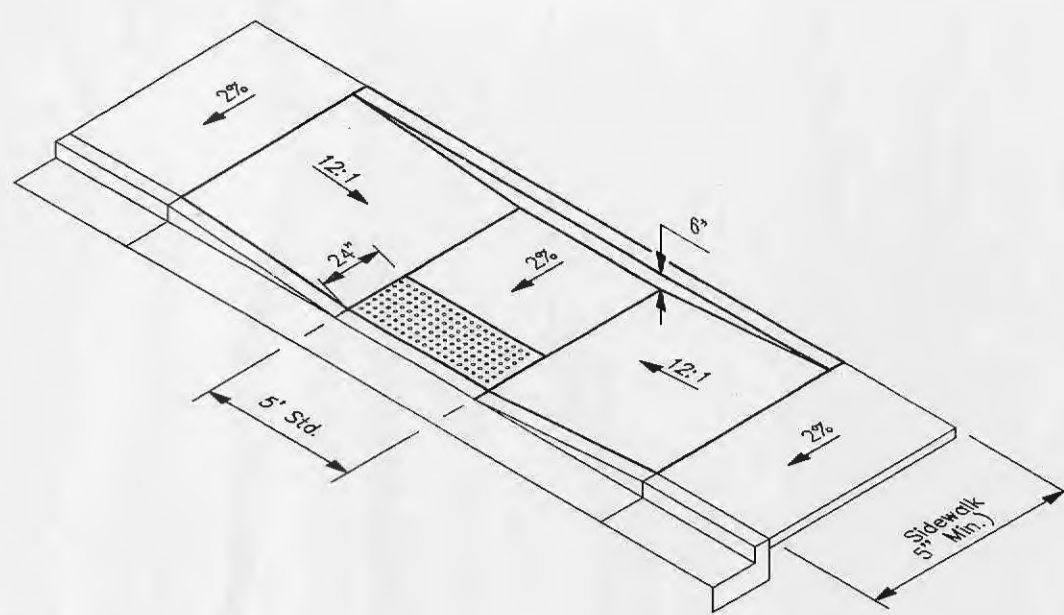


\* COMPRESSIVE STRENGTH OF CONCRETE PAD SHALL BE 4,000psi IN 28 DAYS.

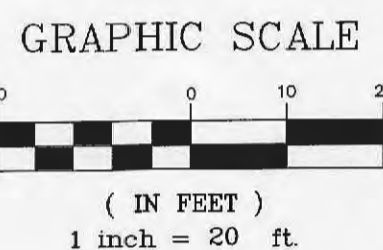
1. TRASH ENCLOSURE PLAN NOT TO SCALE

2. ELEVATION NOT TO SCALE

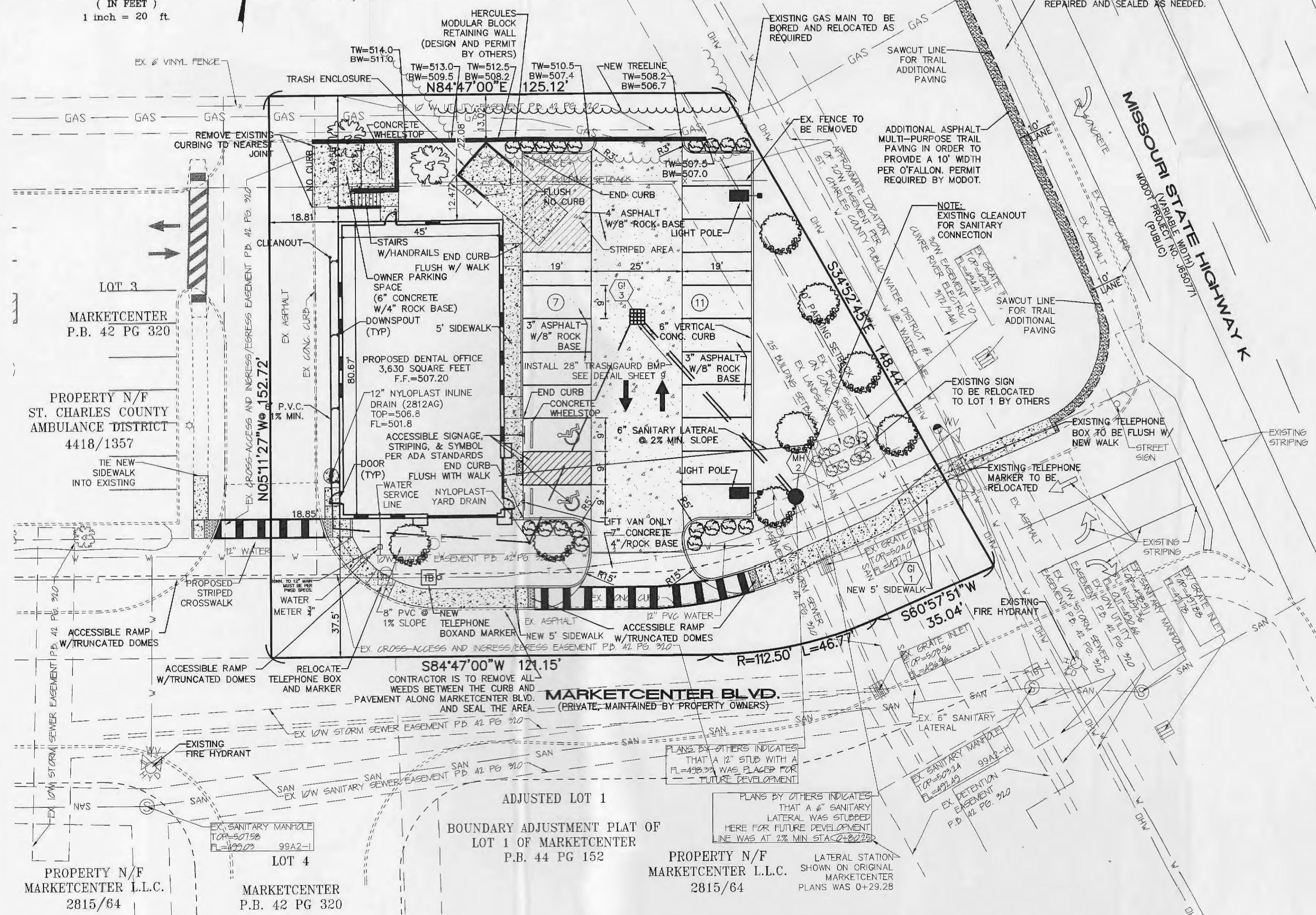
3. ELEVATION NOT TO SCALE



SHARED DRIVE WEST ADA RAMP NOT TO SCALE



PROPERTY N/F UNION ELECTRIC COMPANY 5425/2248

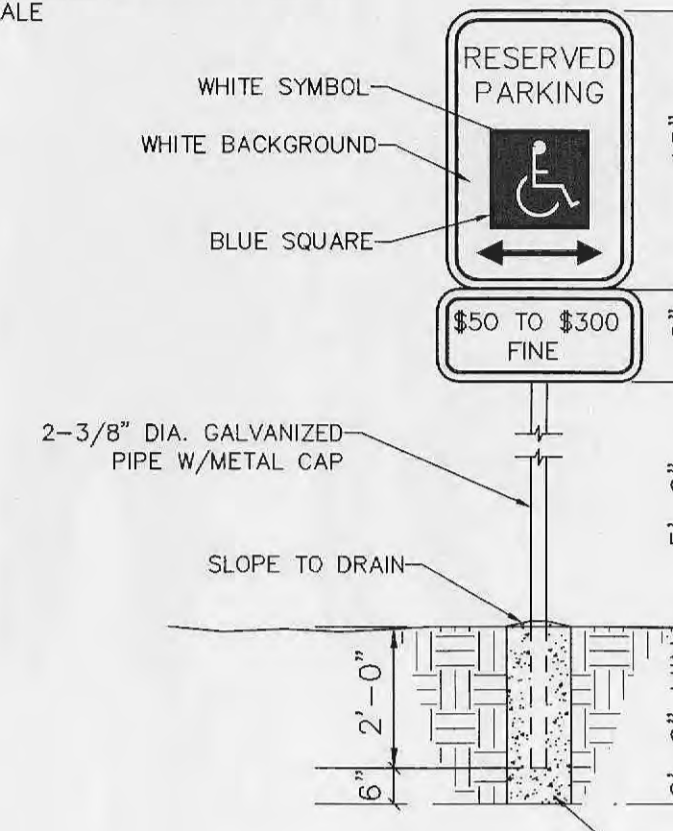


- DCSD NOTES:
- EXISTING SANITARY SEWER SERVICE SHALL NOT BE INTERRUPTED.
  - CONNECTION TO EXISTING SANITARY LATERAL DOES NOT REQUIRE DCSD INSPECTION. IF FOR SOME REASON THE EXISTING LATERAL CAN NOT BE USED AND A NEW CONNECTION MUST BE MADE, DCSD INSPECTION WILL BE REQUIRED AND THE EXISTING LATERAL WILL NEED TO BE CAPPED BACK AS CLOSE AS POSSIBLE TO THE EXISTING MAIN. FOR INSPECTION OF CONNECTION OR CAPPING CONTACT STEVE OVEREY, DCSD CHIEF INSPECTOR, AT 636-441-1244 TO SCHEDULE INSPECTION. 48 HOUR ADVANCE NOTICE IS REQUIRED.

LANDSCAPE LEGEND

- QTY. (19) ~ INDICATES PROPOSED BEAUTYBERRY, GOLDEN CURRANT OR WILD HYDRANGEA
- QTY. (2) ~ INDICATES PROPOSED RED SUNSET MAPLE (MIN. 2" CALIPER)
- QTY. (8) ~ INDICATES PROPOSED WHITE PINE (MIN. 2" CALIPER)

\*\*LANDSCAPING AS DEPICTED IS SUBJECT TO FINAL\*\* DESIGN BY A QUALIFIED LANDSCAPE DESIGNER

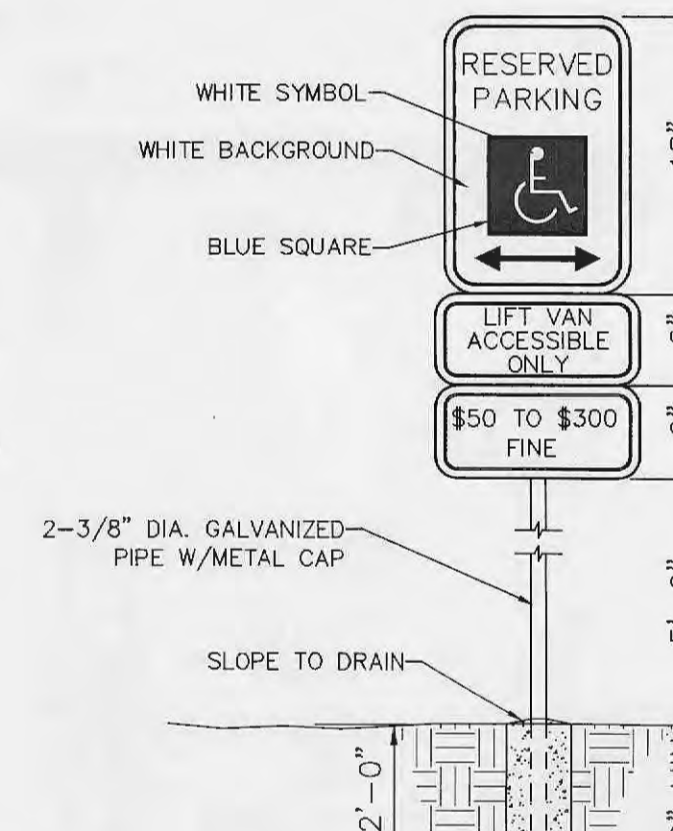


SIGN DESIGNATIONS ARE FROM THE CURRENT MANUAL ON UNIFORM TRAFFIC CONTROL DEVICES.

STANDARD SIGN FACE, STANDARD HIGHWAY DEPARTMENT, OR CITY STREET DEPARTMENT GAUGE, LETTERS AND BORDERS ARE GREEN, THE HANDICAP LOGO SQUARE IS BLUE AND THE BACKGROUND IS WHITE, GALVANIZED PIPE POST 9'-6" LONG, SET 2'-0" INTO GRADE, SET BOTTOM OF "FINE" SIGN 5'-6" ABOVE FINISHED GRADE.

CONTRACTOR TO VERIFY ALL SIGNAGE WITH CITY PRIOR TO ORDERING ALL SIGNAGE.

RESERVED PARKING SIGN NOT TO SCALE



SIGN DESIGNATIONS ARE FROM THE CURRENT MANUAL ON UNIFORM TRAFFIC CONTROL DEVICES.

STANDARD SIGN FACE, STANDARD HIGHWAY DEPARTMENT, OR CITY STREET DEPARTMENT GAUGE, LETTERS AND BORDERS ARE GREEN, THE HANDICAP LOGO SQUARE IS BLUE AND THE BACKGROUND IS WHITE, GALVANIZED PIPE POST 9'-6" LONG, SET 2'-0" INTO GRADE, SET BOTTOM OF "FINE" SIGN 5'-0" ABOVE FINISHED GRADE.

CONTRACTOR TO VERIFY ALL SIGNAGE WITH CITY PRIOR TO ORDERING ALL SIGNAGE.

ACCESSIBLE CAR PARKING SIGN NOT TO SCALE

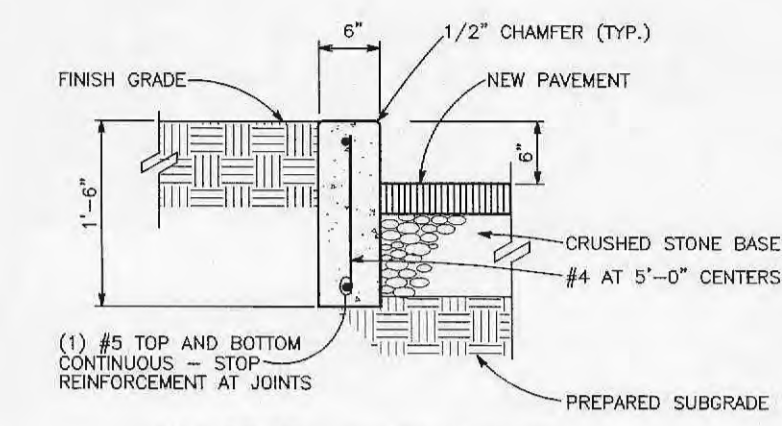


SIGN DESIGNATIONS ARE FROM THE CURRENT MANUAL ON UNIFORM TRAFFIC CONTROL DEVICES.

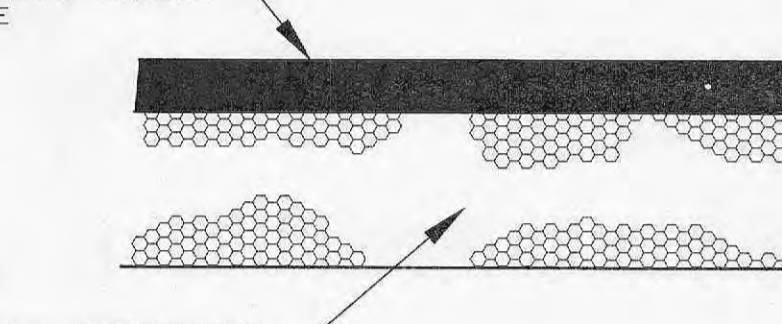
STANDARD SIGN FACE, STANDARD HIGHWAY DEPARTMENT, OR CITY STREET DEPARTMENT GAUGE, LETTERS AND BORDERS ARE GREEN, THE HANDICAP LOGO SQUARE IS BLUE AND THE BACKGROUND IS WHITE.

CONTRACTOR TO VERIFY ALL SIGNAGE WITH CITY PRIOR TO ORDERING ALL SIGNAGE.

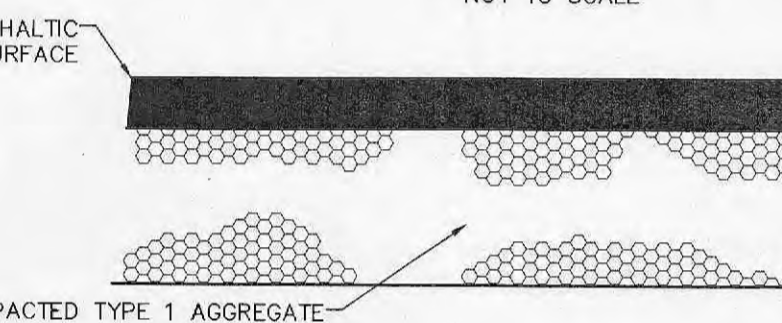
ACCESSIBLE VAN PARKING SIGN NOT TO SCALE



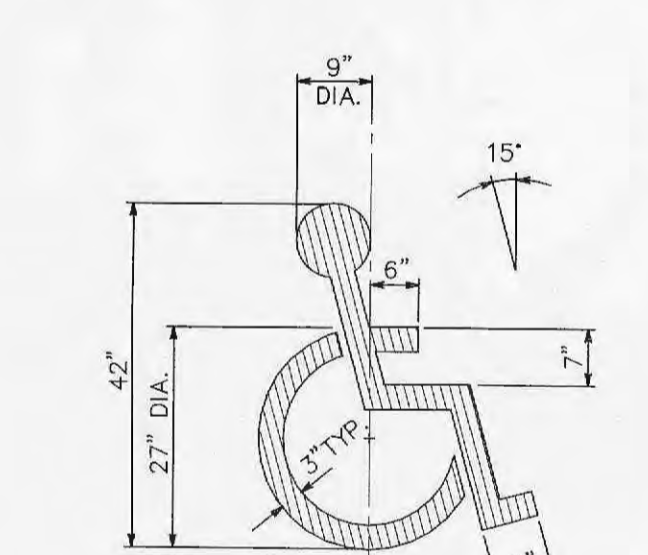
CONCRETE CURB DETAIL NOT TO SCALE



ASPHALT PAVEMENT DETAIL NOT TO SCALE

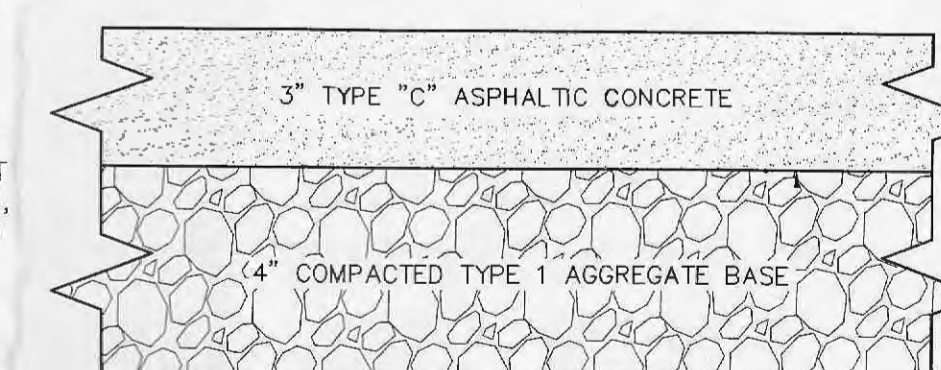


ASPHALT DRIVE AISLE PAVEMENT DETAIL NOT TO SCALE

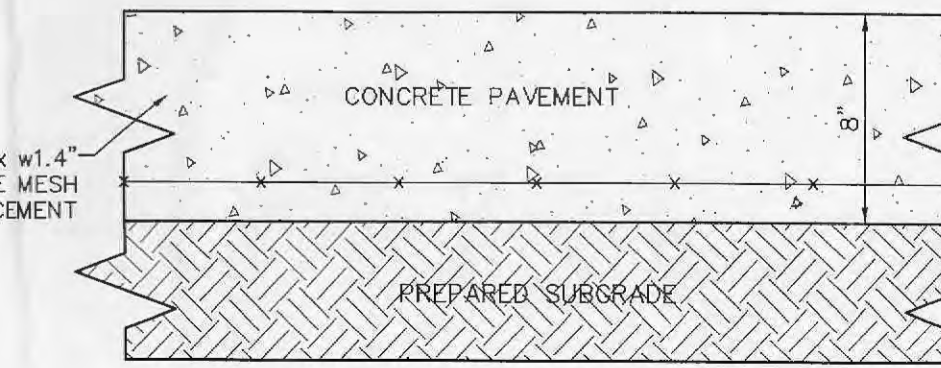


PAINTED ACCESSIBLE PARKING SYMBOL NOT TO SCALE

\*ALL ACCESSIBLE STRIPING AND SYMBOLS TO BE PAINTED BLUE



10'W ASPHALT MULTI-PURPOSE TRAIL NOT TO SCALE



TRASH AREA PAVEMENT NOT TO SCALE

PROJECT TITLE:

LOT 2 OF MARKETCENTER

ENGINEERING PLANNING SURVEYING  
221 Point West Blvd.  
St. Charles, MO 63301  
636-928-5562  
FAX 636-928-1718



DISCLAIMER OF RESPONSIBILITY: I hereby certify that the documents intended to be authorized by my seal are limited to this sheet, and I hereby disclaim any responsibility for all other drawings, specifications, estimates, reports or other documents or instruments relating to or intended to be used for any part or parts of the architectural or engineering project.

STATE OF MISSOURI  
REGISTERED PROFESSIONAL ENGINEER  
CLIFFORD L. HEITMANN  
NUMBER E-29817

Copyright 2015  
Box Engineering Company, Inc.  
Authority No. 000655  
All Rights Reserved

REVISIONS	
8/18/2015	CITY COMMENTS
8/19/2015	DUCKETT CREEK COM
9/1/2015	PWSD NO.2 CMTS
10/8/2015	CITY COMMENTS

Developer / Owner:  
DENNIS SENDEROVICH  
9979 WINGHAVEN BLVD SUITE 202  
O'FALLON, MISSOURI 63368  
314-504-1343

SITE PLAN

P+Z No. #13-15  
City No. #15-599

Page No.