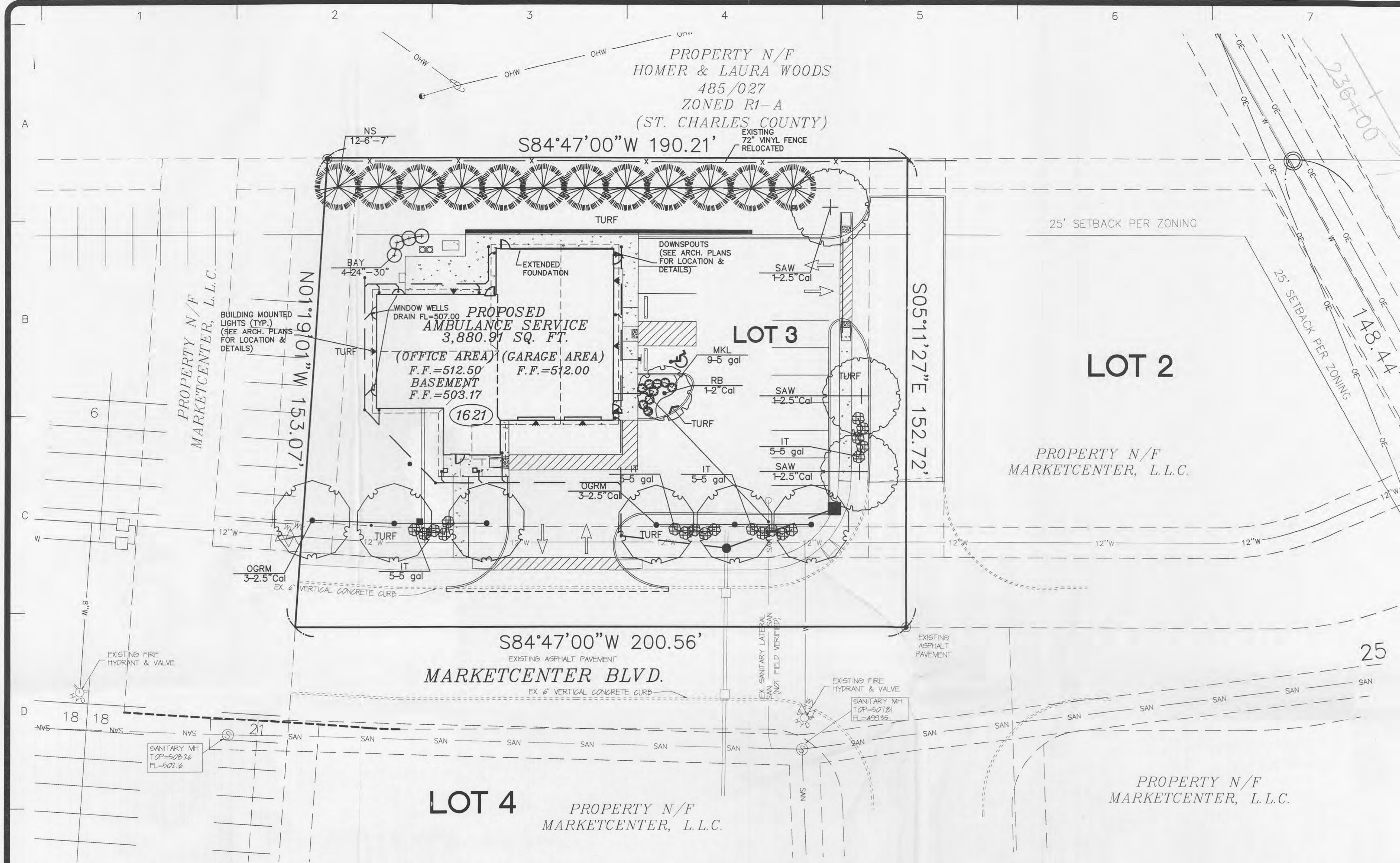


REVISIONS	BY

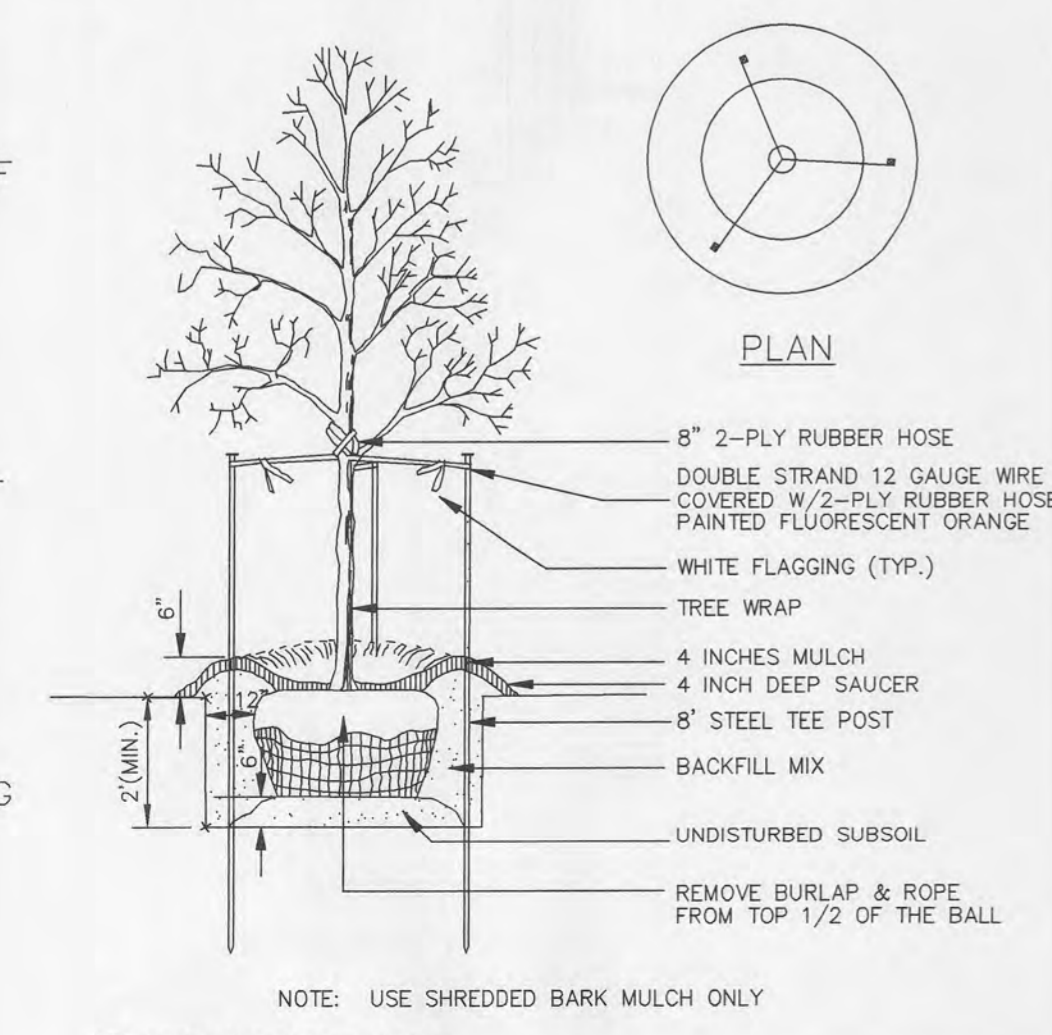
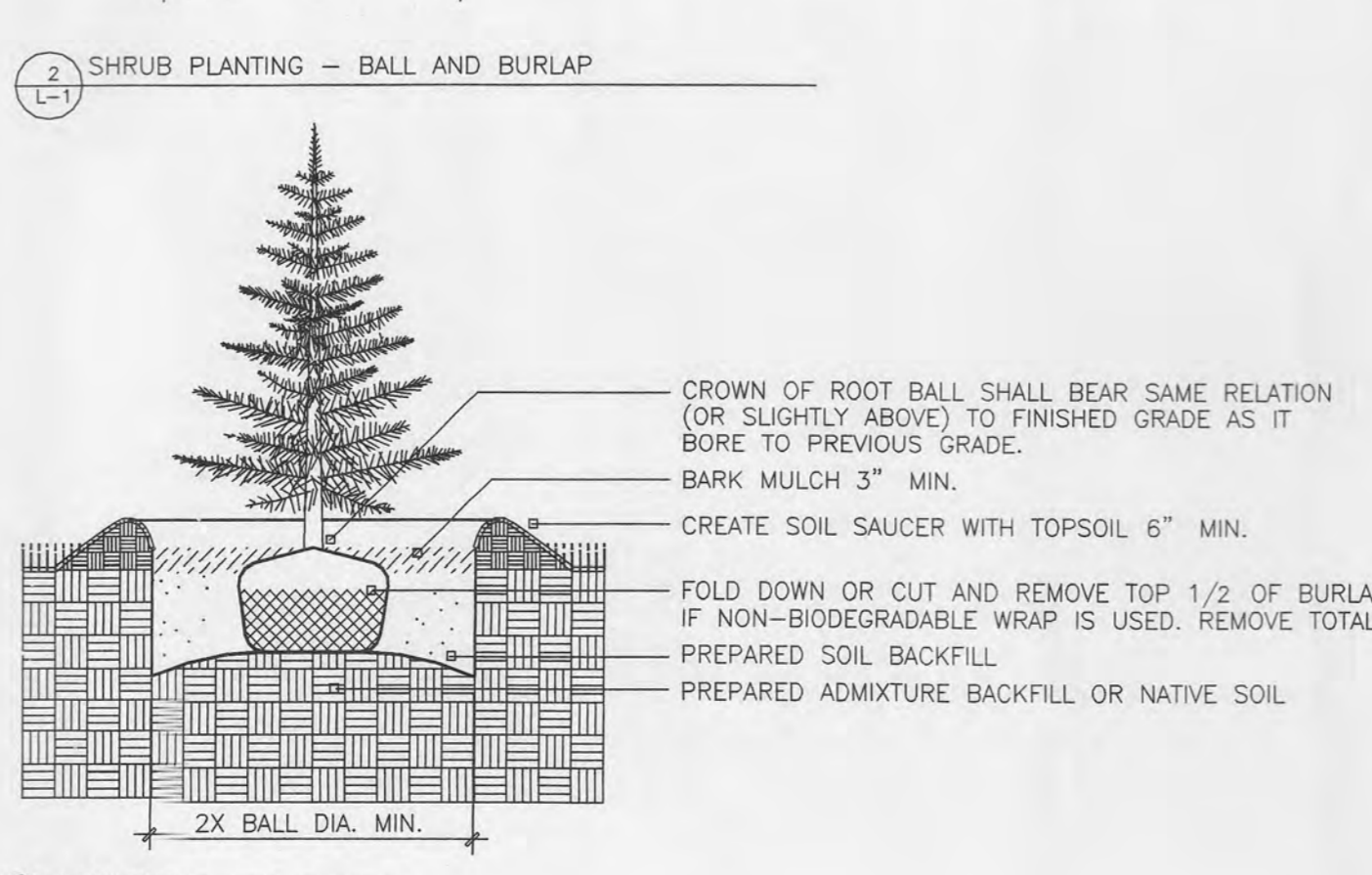
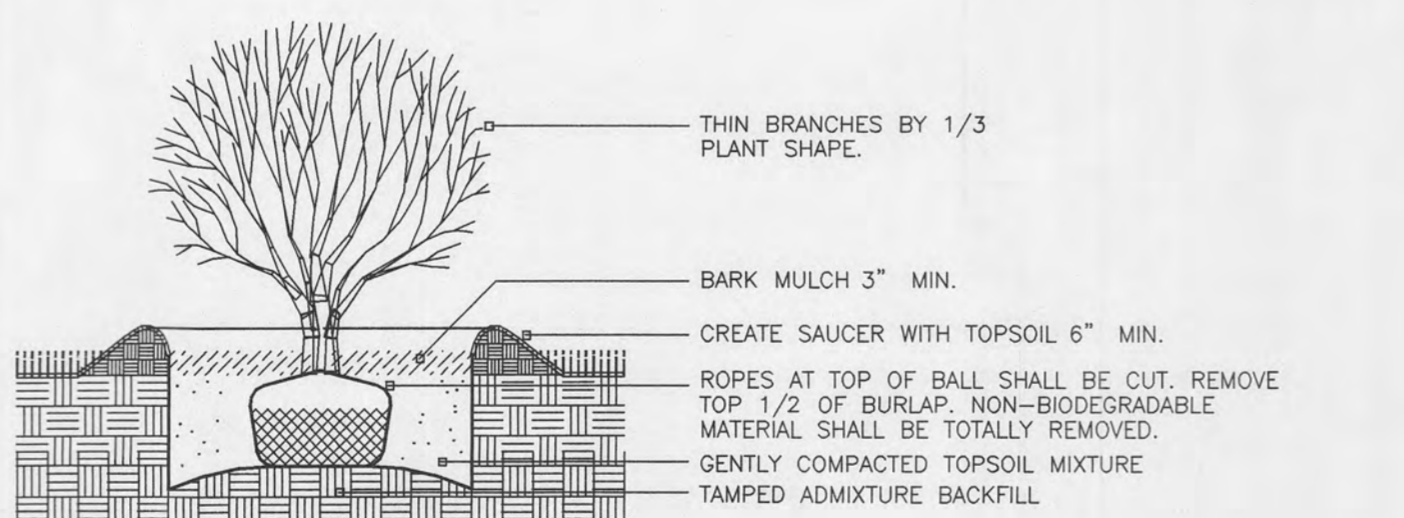


- NOTES:**
- 1.) All natural vegetation shall be maintained where it does not interfere with construction or the permanent plan of operation. Every effort possible shall be made to protect existing structures or vegetation from damage due to equipment usage. Contractor shall at all times protect all materials and work against injury to public.
 - 2.) The landscape contractor shall be responsible for any coordination with other site related work being performed by other contractors. Refer to architectural drawings for further coordination of work to be done.
 - 3.) Underground facilities, structures and utilities must be considered approximate only. There may be others not presently known or shown. It shall be the landscape contractor's responsibility to determine or verify the existence of and exact location of the above (Call 1-800-DIG-RITE).
 - 4.) Plant material are to be planted in the same relationship to grade as was grown in nursery conditions.
 - 5.) All mulch to be shredded bark mulch at 3" depth (after compaction) unless otherwise noted. Mulch shall be clean and free of all foreign materials. Edge all beds with a 4" spade-cut edge unless otherwise noted. Provide alternate for Ryerson steel edge.
 - 6.) It shall be the landscape contractor's responsibility to:
 - A.) Verify all existing and proposed features shown on the drawings prior to commencement of work.
 - B.) Report all discrepancies found with regard to existing conditions or proposed design to the landscape architect immediately for a decision.
 - C.) Stake the locations of all proposed plant material and obtain the approval of the owner's representative or landscape architect prior to installation.
 - 7.) The landscape contractor is to receive the site graded to within 1/10 of a foot. Landscape contractor to obtain letter of grade certification from the general contractor prior commencement of work.
 - 8.) All planting beds shall be cultivated to 6" depth minimum and graded smooth immediately before planting of plants. Plant perennials to within 18" of trunk of trees or shrubs planted within the area.
 - 9.) All plant material (excluding ground cover, perennials and annuals) are to be warranted for a period of 12 months after installation at 100% of the installed price.
 - 10.) All disturbed lawn areas to be sodded with fescue sod. Lawn areas shall be unconditionally warranted for a period of 90 days from date of final acceptance. Bare areas more than one square foot per any 50 square feet shall be replaced.
 - 11.) Items shown on this drawing take precedence over the material list. It shall be the landscape contractor's responsibility to verify all quantities and conditions prior to implementation of this plan. No substitutions of types or size of plant materials will be accepted without written approval from landscape architect.
 - 12.) Siltation controls may be required to prevent run-off. Straw bales placed end-to-end shall be used, anchored with no less than two 3/8" X 36" reinforcing rods. Bales shall remain until all graded areas are seeded or sodded.

landscape
TECHNOLOGIES

67 Jacobs Creek Drive
St. Charles, Missouri 63041
(636) 928-1250
Fax: (636) 928-4953

PLANTING PLAN FOR THE PROPOSED
St. Charles County Ambulance District
HIGHWAY K @ MARKETCENTER BLVD. O'FALLON, MISSOURI



PLANT SCHEDULE:

TREES	COMMON/BOTANICAL	SIZE	QTY
OGRM	'October Glory' Maple / Acer rubrum 'October Glory'	2.5"Cal	6
SAW	Sawtooth Oak / Quercus acutissima	2.5"Cal	3
EVERGREEN TREES	COMMON/BOTANICAL	SIZE	QTY
NS	Norway Spruce / Picea abies	6'-7'	12
FLOWERING TREES	COMMON/BOTANICAL	SIZE	QTY
RB	Redbud / Cercis canadensis	2"Cal	1
SHRUBS	COMMON/BOTANICAL	SIZE	QTY
IT	Henry's Garnet Itea / Itea virginica 'Henry's Garnet'	5 gal	20
BAY	Northern Bayberry / Myrica pensylvanica	24"-30"	4
MKL	Miss Kim Lilac / Syringa patula 'Miss Kim'	5 gal	9

O'FALLON #3506
December 7, 2006

DRAWN: R. MARDIS
CHECKED: RWM/GJB
DATE: 10/31/06
SCALE: 1"=20'-0"
JOB No.: 2006-227
SHEET

L-1

OF ONE SHEET