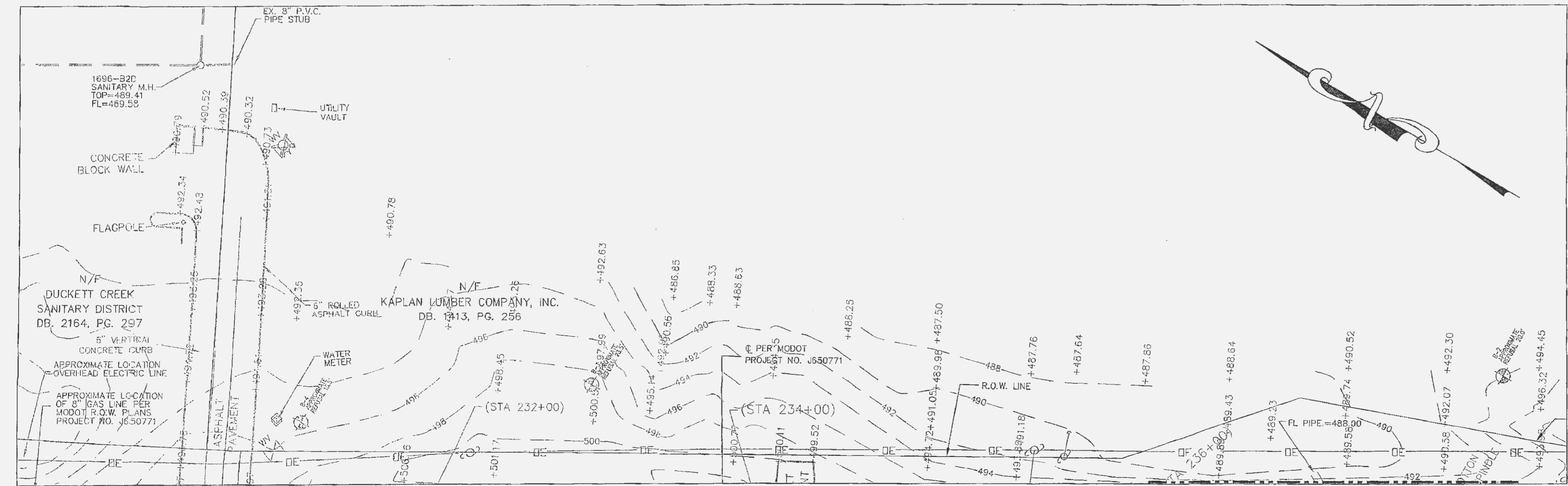
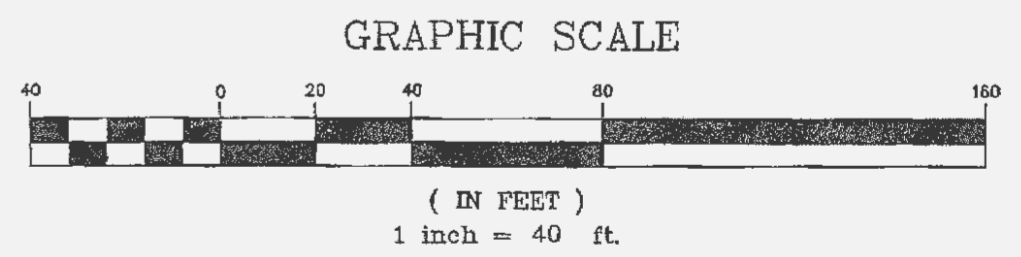


F:\Draw\3300\2043380\1-plans\CO3-EXIST.dwg, 5/31/2005 12:24:49 PM, KIP 6054.pcl



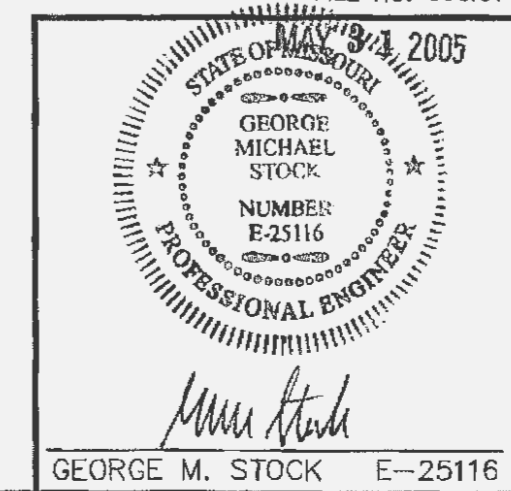
NOTE: ROADWAY MUST BE KEPT CLEAN AND FREE OF MUD, DIRT AND DEBRIS AT ALL TIMES. SEE DETAIL SHEET C2

APPROXIMATE TEST PIT LOCATIONS PER SCI ENGINEERING INC., FIGURE 1B, SCI NO. 2001-1108.01, OCTOBER 2001.



REVISD PER CITY/DUCKETT CREEK SANITARY COMMENTS 05/31/2005
 REVISD PER MDOT, P.W.S.D. No. 2, D.C.S.D., & CITY OF O'FALLON COMMENTS 04/18/2005
 REVISD PER CITY OF O'FALLON & DUCKETT CREEK SANITARY COMMENTS 03/24/2005

MARKETCENTER L.L.C.
 EXISTING CONDITIONS PLAN



STOCK & ASSOCIATES
Consulting Engineers, Inc.

257 Chesterfield Business Parkway
 St. Louis, MO 63005
 PH. (636) 530-9100
 FAX (636) 530-9130
 e-mail: general@stockassoc.com
 Web: www.stockassoc.com

DRAWN BY: R.E.S. DATE: 02/17/05 CHECKED BY: G.M.S. DATE: 02/17/05 DATE JOB NUMBER: 204-3380 SHEET: C3 of 18