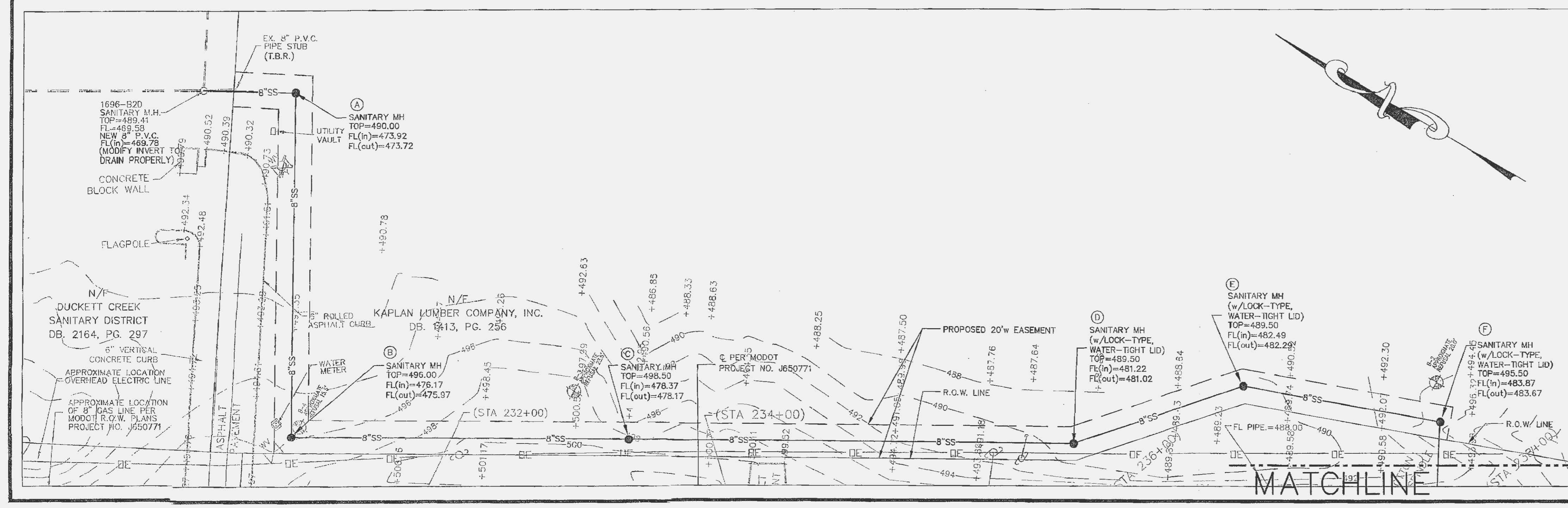
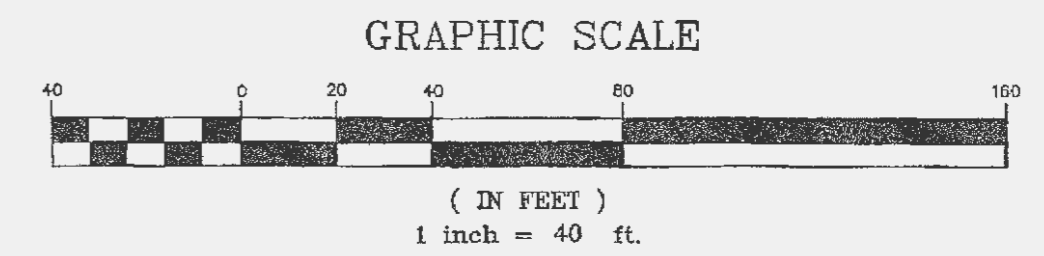
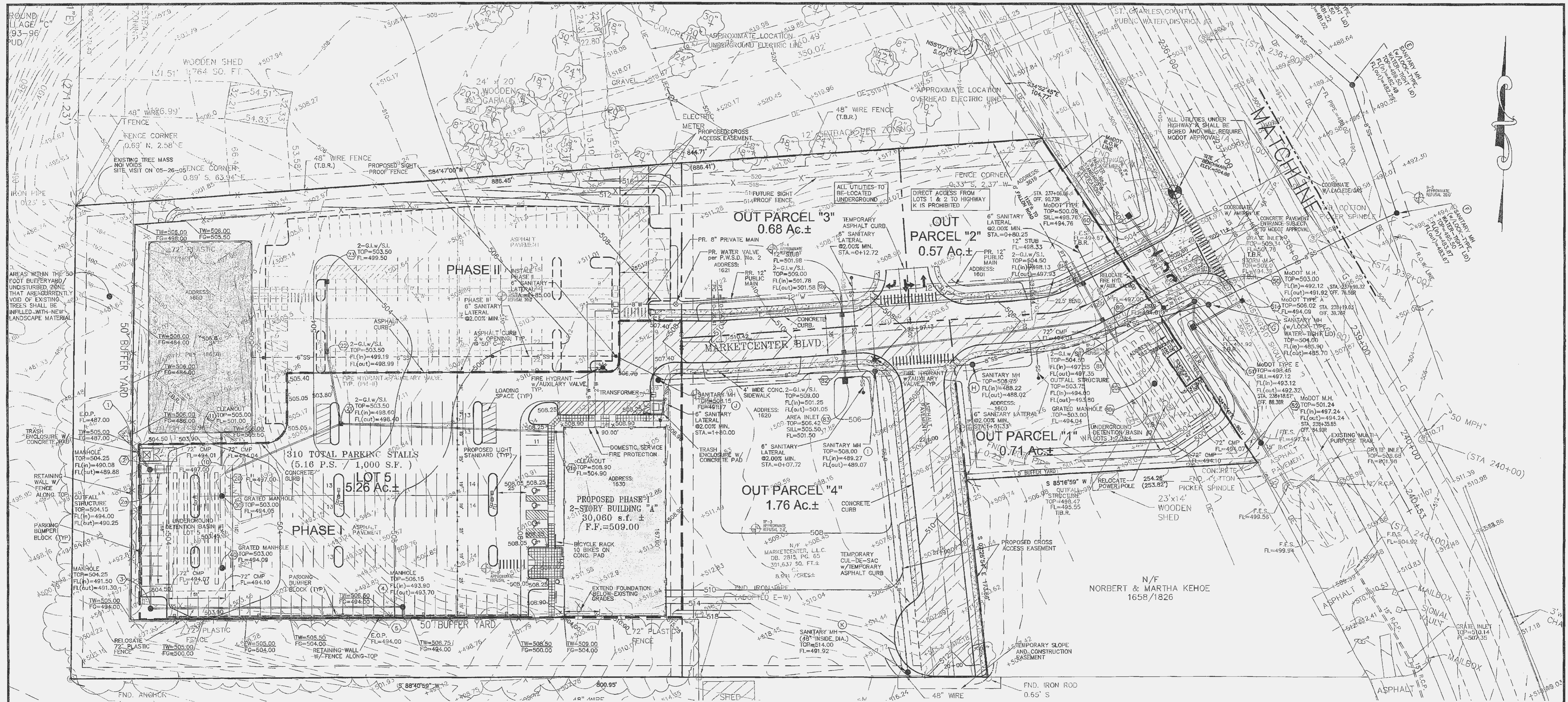


F:\Draw\3300\20433800\1-plans\04-0-OVERALL.dwg, 5/31/2005 12:25:20 PM, KP 6054.pcb



REVISD PER CITY/DUCKETT CREEK SANITARY COMMENTS 05/31/2005
 REVISD PER MODOT, P.W.S.D. No. 2, D.C.S.D., & CITY OF FALLON COMMENTS 04/18/2005
 REVISD PER CITY OF O'FALLON & DUCKETT CREEK SANITARY COMMENTS 03/24/2005

MARKETCENTER L.L.C.

OVERALL SITE PLAN (PHASE I AND PHASE II)

GEORGE M. STOCK
E-25116

FILE NO. 305.01

Stock & Associates

Consulting Engineers, Inc.

257 Chesterfield Business Parkway
 St. Louis, MO 63005
 PH. (636) 530-9100
 FAX (636) 530-9130
 e-mail: general@stockassoc.com
 Web: www.stockassoc.com

DRAWN BY: R.E.S.	DATE: 02/17/05	CHECKED BY: G.M.S.	DATE: 02/17/05
JOB NUMBER: 204-3380		SHEET: C4 of 18	