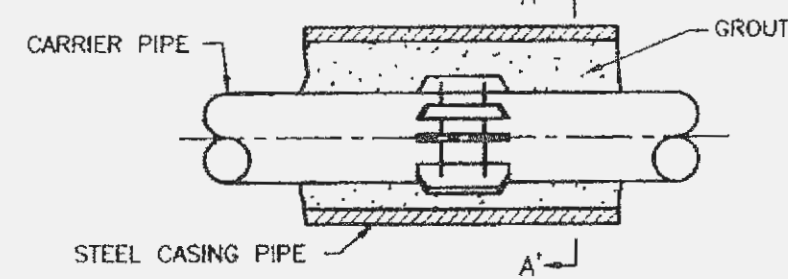
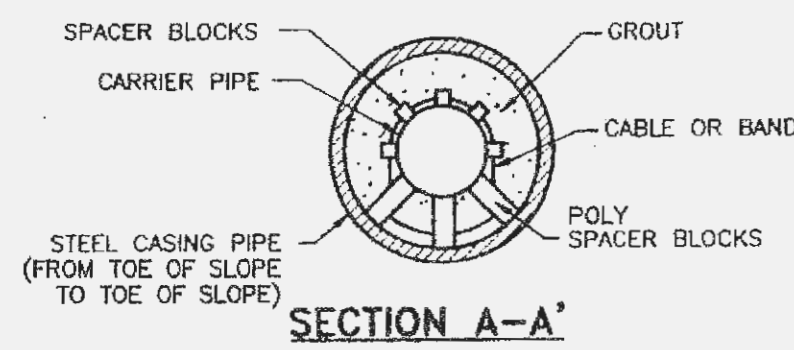


**BORING DETAIL**

- NOTES:
1. INSIDE DIAMETER OF CASING PIPE TO BE MINIMUM OF 4" GREATER THAN COUPLING DIAMETER OF CARRIER PIPE.
  2. ENCASMENTS TO BE INSTALLED UNDER THE ROAD BY MEANS OF JACKING IT THROUGH, OR BY DRY BORING A HOLE THAT WILL RECEIVE THE CASING WITH A SNUG FIT.
  3. THE OUTSIDE DIAMETER OF THE CASING SHALL NOT BE LESS THAN, NOR MORE THAN ONE INCH GREATER THAN THE BORED HOLE.
  4. THE ANNULAR SPACE BETWEEN THE CASING PIPE AND THE BORED HOLE SHALL BE FILLED WITH GROUT.

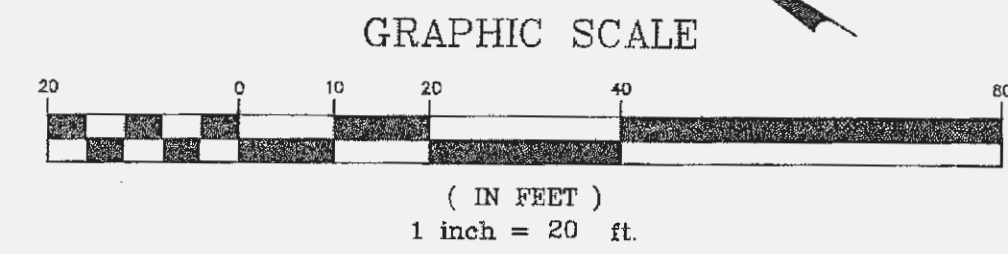
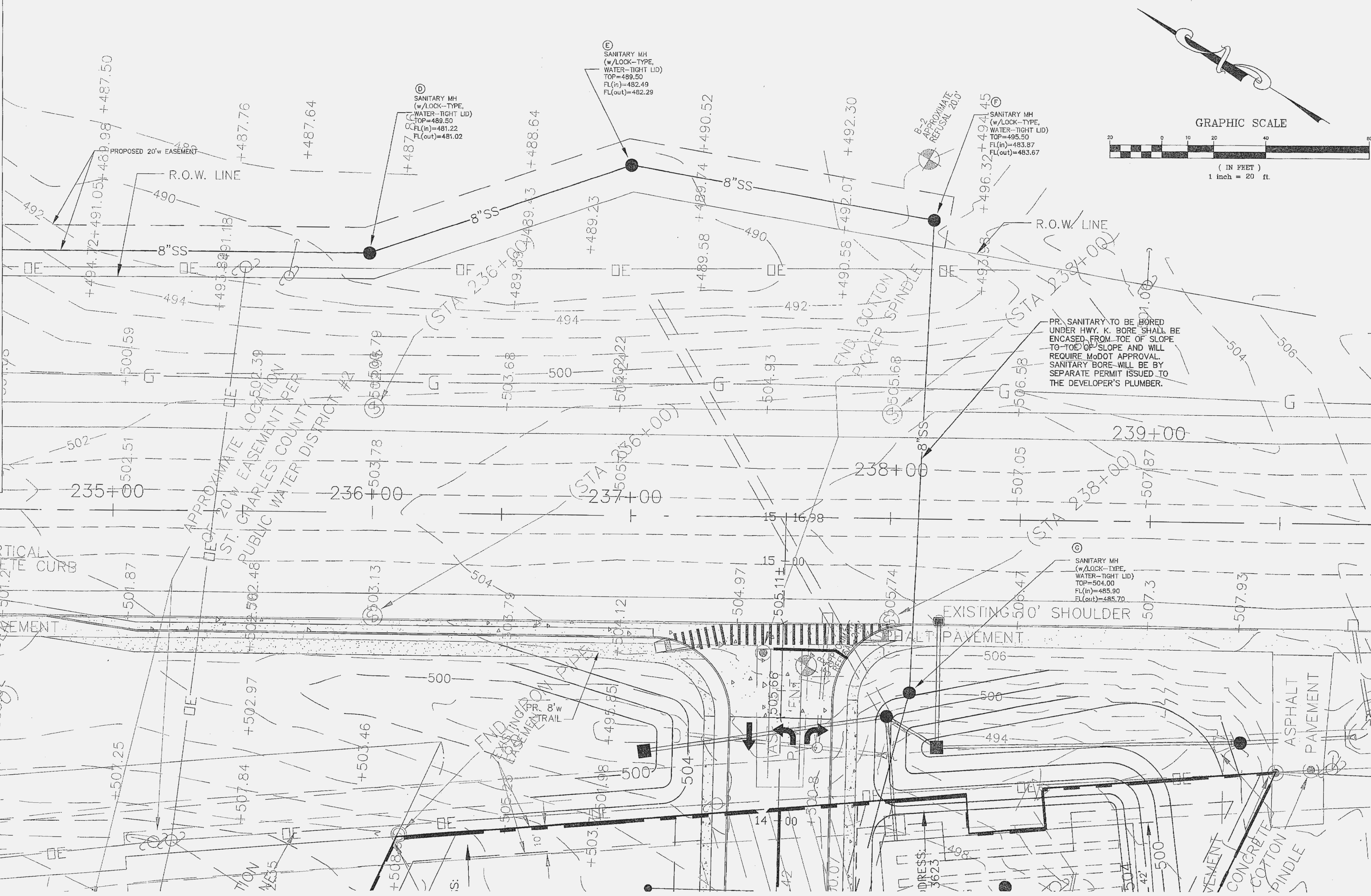


**SUPPORT OF CARRIER PIPE OR FORCE MAIN IN CASING**



**Duckett Creek Sanitary District**

Drawn By: BSM	App By: KLA	Detail No. 23
Chd By: MDOB	Date: 1-5-01	



PR. SANITARY TO BE BORED UNDER HWY. K. BORE SHALL BE ENCASED FROM TOE OF SLOPE TO TOE OF SLOPE AND WILL REQUIRE MDOT APPROVAL. SANITARY BORE WILL BE BY SEPARATE PERMIT ISSUED TO THE DEVELOPER'S PLUMBER.

REVISD PER CITY/DUCKETT CREEK SANITARY COMMENTS 05/31/2005  
 REVISD PER MDOT, P.W.S.D. No. 2, D.C.S.D., & CITY OF O'FALLON COMMENTS 04/19/2005  
 REVISD PER CITY OF O'FALLON & DUCKETT CREEK SANITARY COMMENTS 03/24/2005

MARKETCENTER L.L.C.  
 HWY. K - SANITARY SEWER BORING PLAN

**STOCK & ASSOCIATES**  
 Consulting Engineers, Inc.

257 Chesterfield Business Parkway  
 St. Louis, MO 63005  
 PH. (636) 530-9100  
 FAX (636) 530-9130  
 e-mail: general@stockassoc.com  
 Web: www.stockassoc.com

FILE NO. 305.01

STATE OF MISSOURI  
 GEORGE MICHAEL STOCK  
 NUMBER E-25116  
 PROFESSIONAL ENGINEER

GEORGE M. STOCK E-25116

DRAWN BY: R.E.S.	DATE: 02/17/05	CHECKED BY: G.M.S.	DATE: 02/17/05	DATE: 02/17/05	JOB NUMBER: 204-3380	SHEET: C4.2 of 18
------------------	----------------	--------------------	----------------	----------------	----------------------	-------------------

F:\Draw3300\2043380\I-plans\CO4-2-SANITARY-BORING.dwg, 5/31/2005 12:27:33 PM, KIP 6054.pcl