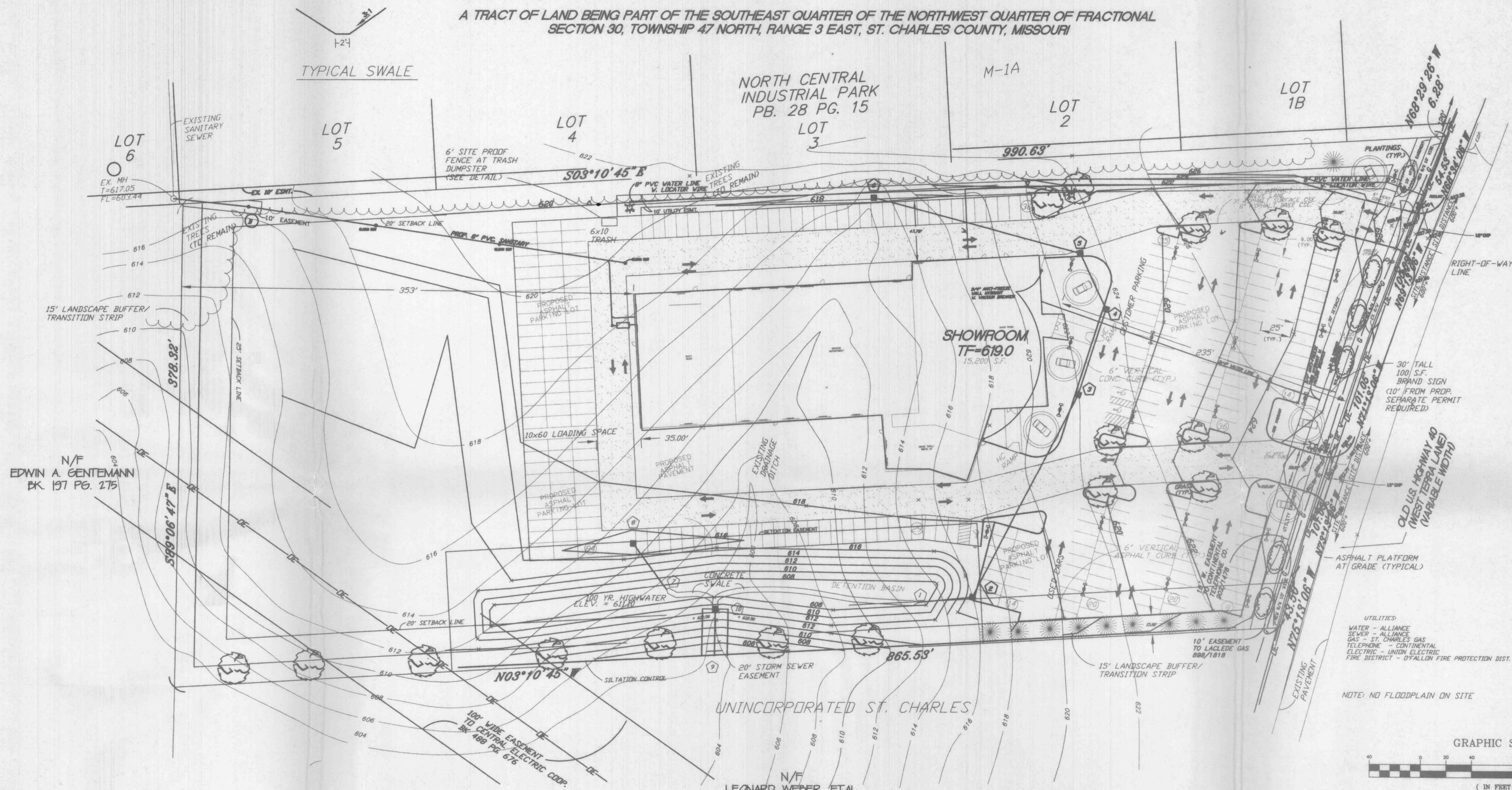


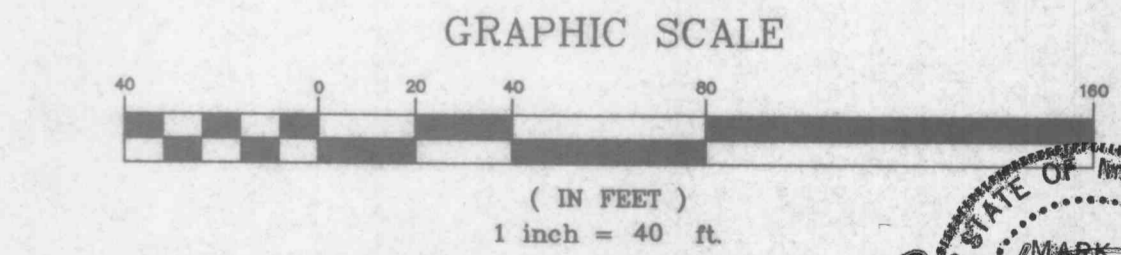
MARSHALL FORD

A TRACT OF LAND BEING PART OF THE SOUTHEAST QUARTER OF THE NORTHWEST QUARTER OF FRACTIONAL SECTION 30, TOWNSHIP 47 NORTH, RANGE 3 EAST, ST. CHARLES COUNTY, MISSOURI



N/F EDWIN A. GENTEMANN BK. 197 PG. 275

N/F LEONARD WEBER, ETAL BK. 392, PG. 506



UNDERGROUND FACILITIES, STRUCTURES, AND UTILITIES HAVE BEEN PLOTTED FROM AVAILABLE SURVEYS AND RECORDS, AND THEREFORE, THEIR LOCATIONS MUST BE CONSIDERED AS ONLY APPROXIMATE. THE VERIFICATION OF THE LOCATIONS OF ALL UNDERGROUND FACILITIES EITHER SHOWN OR NOT SHOWN ON THESE PLANS, SHALL BE THE RESPONSIBILITY OF THE CONTRACTOR.

EARTHWORK QUANTITIES
 FILL = 12,260 C.Y. x 1.15 = 14,100 C.Y.
 CUT = 14,100 C.Y.
 SITE BALANCE

SITE COVERAGE CALCS: BLDG. = 37,780 SF / 348,480 SF = 11%
 PAVEMENT = 139,093 SF / 348,480 SF = 40%
 GREEN SPACE = 171,607 SF / 348,480 SF = 49%

PARKING CALCS:
 REG. PARKING - AUTO SALES LOT 1 SPACE/3000 SF. = 1 SPACE/EA. ENVELOPE
 50,350SF./3000SF. = 15 ENPL. = 30 SPACES
 AUTO REPAIR AREA - 1 SPACE/500 SF.
 25,250 SF./500 SF. = 47 SPACES
 TOTAL SPACES REQ. = 78 SPACES
 TOTAL SPACES PROVIDED = 207 SPACES
 TOTAL LOADING SPACES = 2 SPACES
 TOTAL HWP SPACES PROVIDED = 4 SPACES

SYMBOL	QUANTITY	COMMON NAME	SIZE
🍎	1	BRADFORD PEAR	
🌳	1	HONEY LOCUST	
🌲	1	EASTERN WHITE PINE	6'-7' TALL
🌳	1	VIBURNUM	18"-20" TALL

FEET STEEL EPOXY GULF YARDS PARK MLL21

REVISIONS	
DATE	COMMENTS
7/23/97	PER CLIENT'S COMMENTS
8/10/97	PER CITY'S COMMENTS
10/10/97	PER CLIENT'S COMMENTS
12/15/97	PER CITY'S COMMENTS
12/31/97	PER CITY'S COMMENTS
2/14/98	PER FIRE MARSHALL
2/13/98	PER FIRE MARSHALL

MARSHALL FORD
SITE PLAN

DOERING ENGINEERING INC.
 7321 S. LINDBERGH BLVD. SUITE 104 ST. LOUIS, MO. 63125
 OFFICE: (314) 487-6913 FAX: (314) 487-2379

CIVIL ENGINEERING * PLANNING * SURVEYING

DATE: _____ JOB NO. 98125 CADD: _____
 DRAWN: MEV CHK: _____ SHEET: 2
 BASEMAP: _____