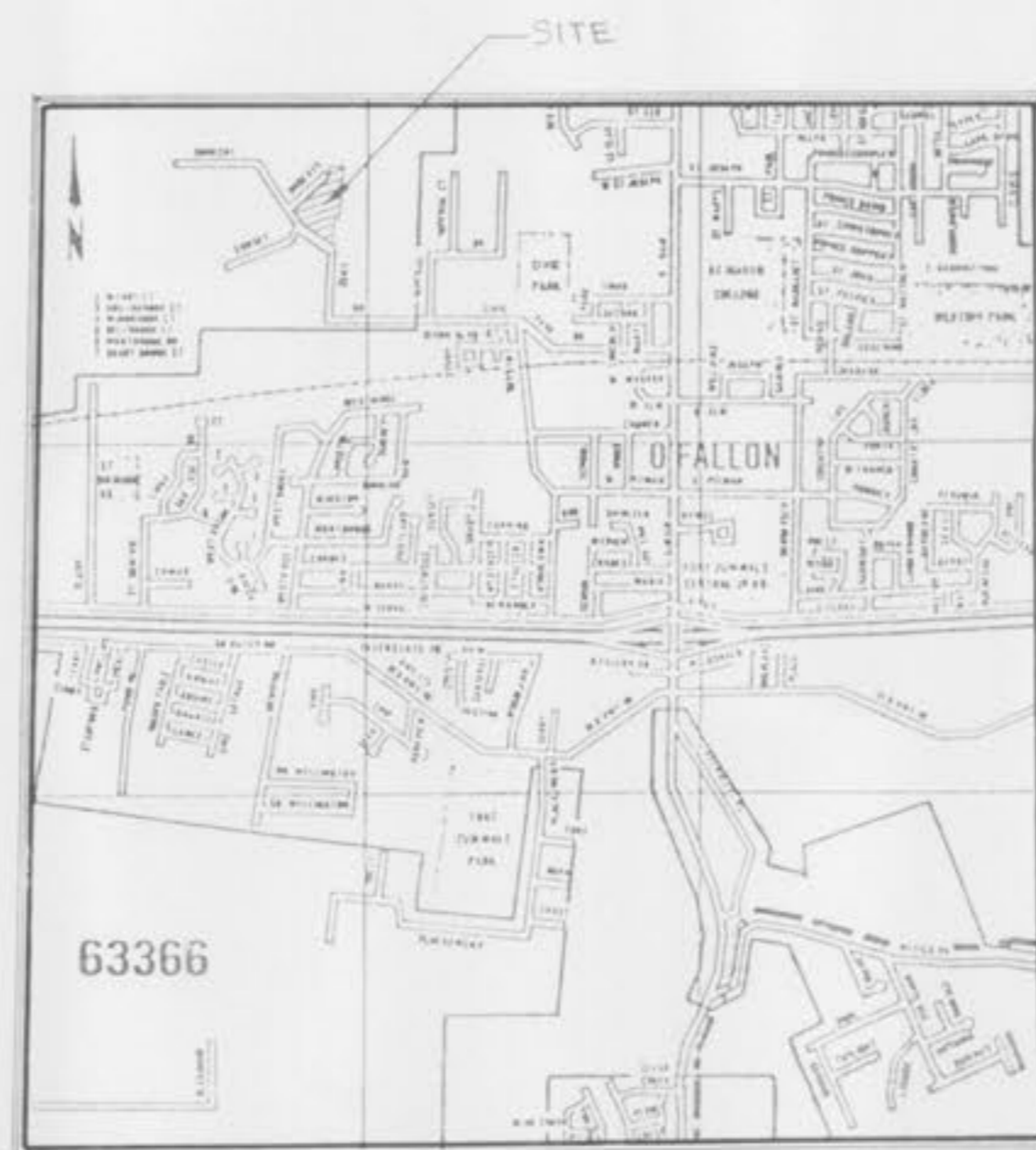


PLANS FOR THE CONSTRUCTION OF  
 GRADING, SANITARY SEWERS, STORM SEWERS,  
 WATER MAIN FACILITIES AND STREET PAVING  
 FOR

# MARYRIDGE

A TRACT OF LAND BEING PART OF  
 THE SOUTHWEST QUARTER OF SECTION 20,  
 TOWNSHIP 47 NORTH, RANGE 3 EAST,  
 ST. CHARLES COUNTY, MISSOURI

INDEX	
1	COVER SHEET
2	NOTES & SPECIFICATIONS
3	FLAT PLAN
4	GRADING PLAN
5	STREET PROFILES
6	SEWER PROFILES
7-10	CONSTRUCTION DETAILS



LOCATION MAP

FILE CPT  
**APPROVED** AS NOTED  
 2-16-93  
*Frank Holwer*

SITE BENCHMARK:  
 TOP OF EXISTING MANHOLE NUMBER 100  
 ELEVATION = 578.17

Prepared for;

Mr. Jerry A. Davis  
 313 Wood Street  
 O'Fallon, Missouri 63366

**APPROVED**  
 DATE 2/14/93  
 P & Z

FRONTIER LAND SERVICE CORP.			
164 CLARKSON EXECUTIVE PARK ELLISVILLE, MISSOURI 63011 (314) 230-8183 FAX (314) 230-8184			
DRAWN BY:	CHECKED BY:	SHEET NUMBER:	JOB NUMBER:
JVA	DEH	1 of 10	92-013
DATE:	LAND SURVEYING - LAND PLANNING		
NOVEMBER '92	CIVIL ENGINEERING		

REV. 28 FEB 92  
 REV. 22 JAN 93