



MASTERCARD
0' Fallon Missouri
Prepared for
MASTERCARD INTERNATIONAL
12115 Lockland Road
St. Louis, MO 63146
Contact Number:

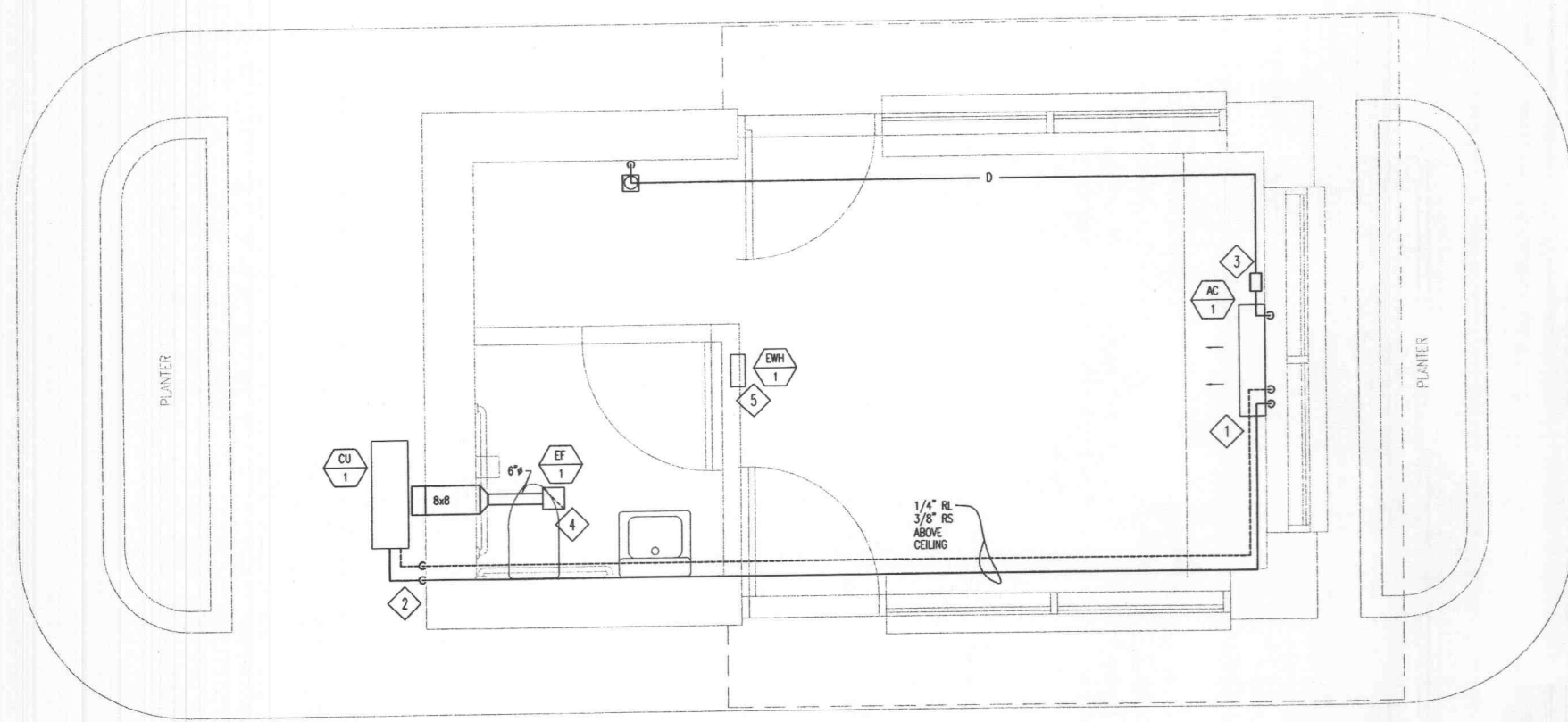
HELLMUTH, OBATA + KASSABAUM, P.C.

NYC
620 Avenue Of The Americas
New York, New York 10011
T212.741.1200. F212.633.1163.

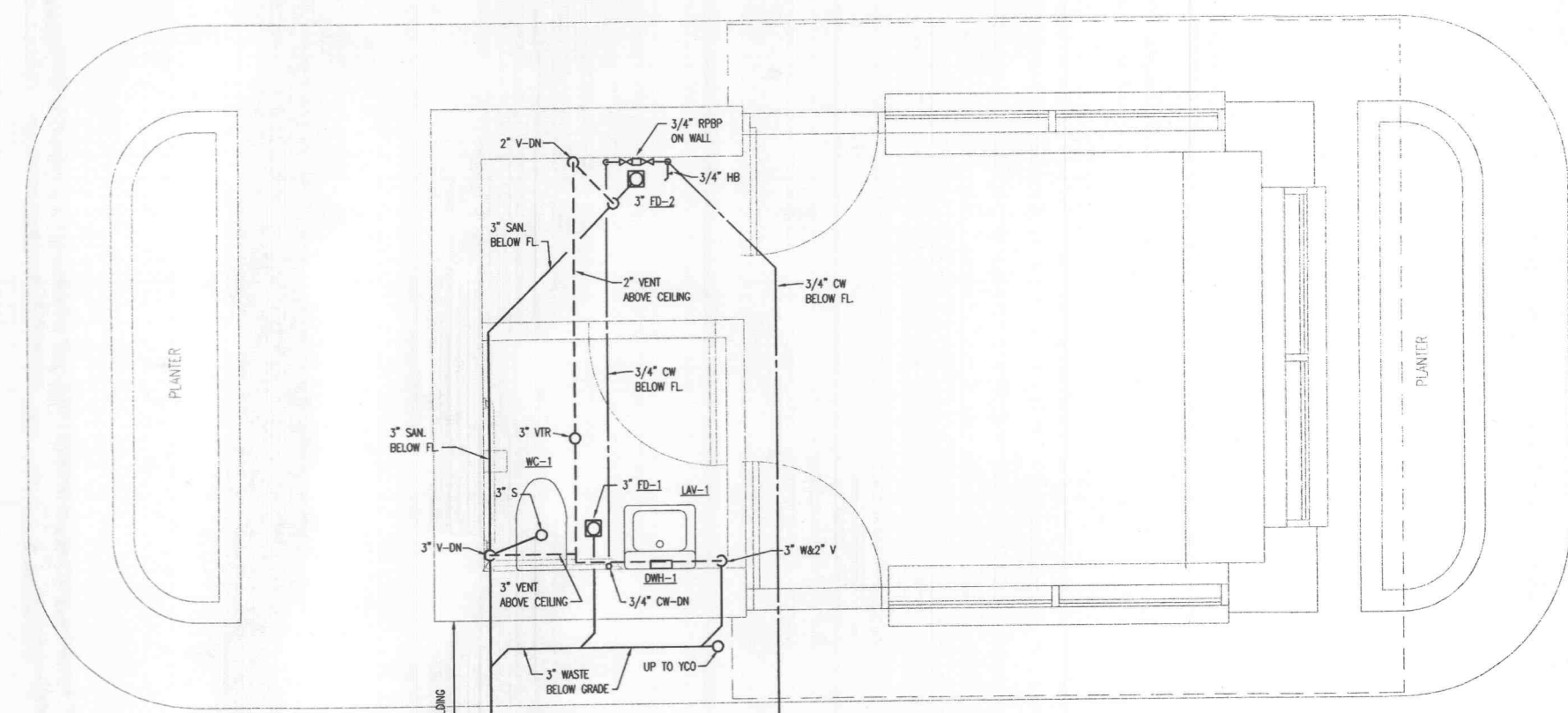
STL
211 North Broadway, Suite 600
St. Louis, MO 63102 USA
T314.421.2000. F314.421.6073.

All reproduction & intellectual property rights reserved ©2001 HOK
In association with

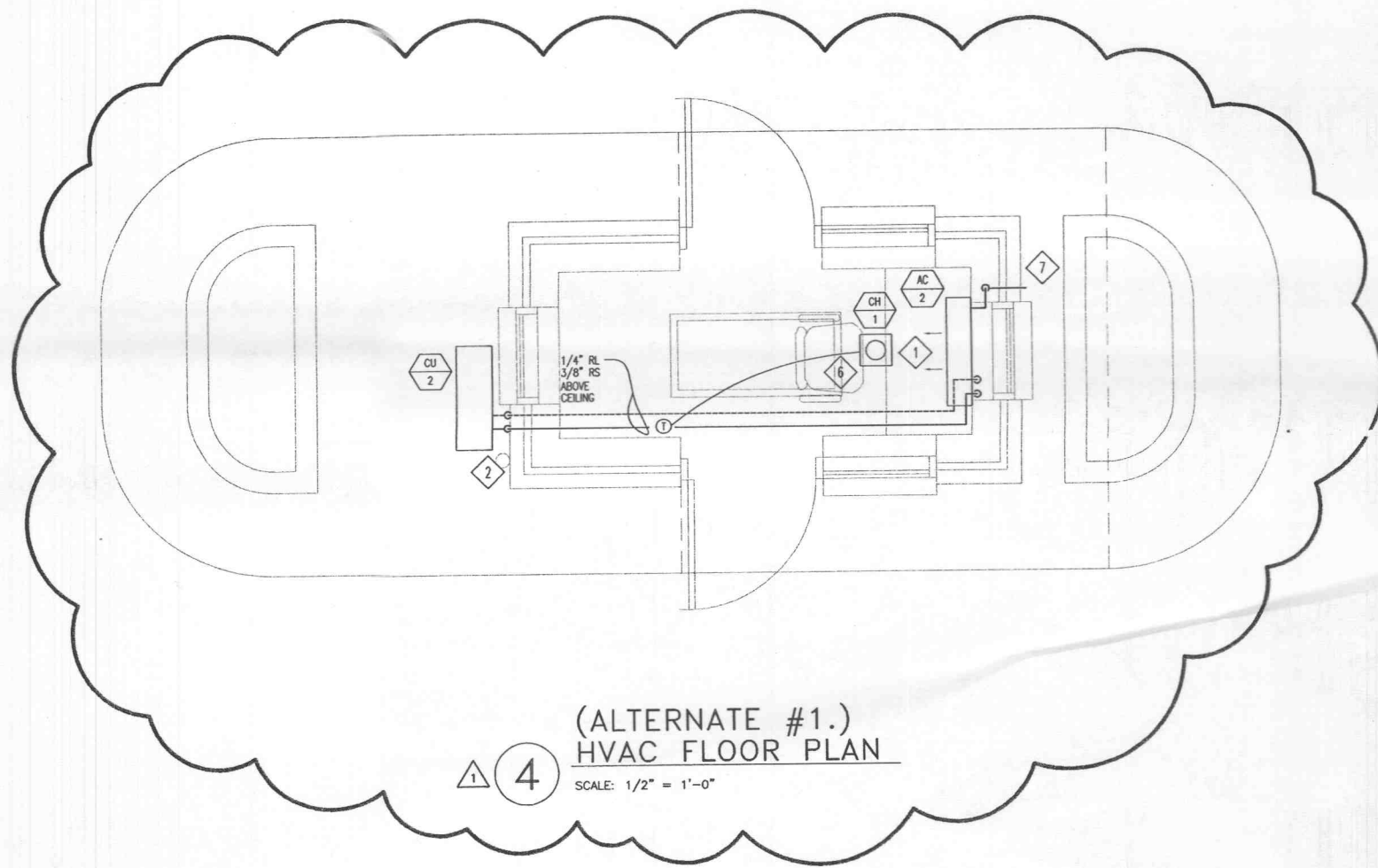
EDM INCORPORATED
STRUCTURAL, CIVIL, AND MEP ENGINEERS
220 Mansion House Center
St. Louis, MO 63102-1902
T. 314.231.5485 F. 314.231.8167



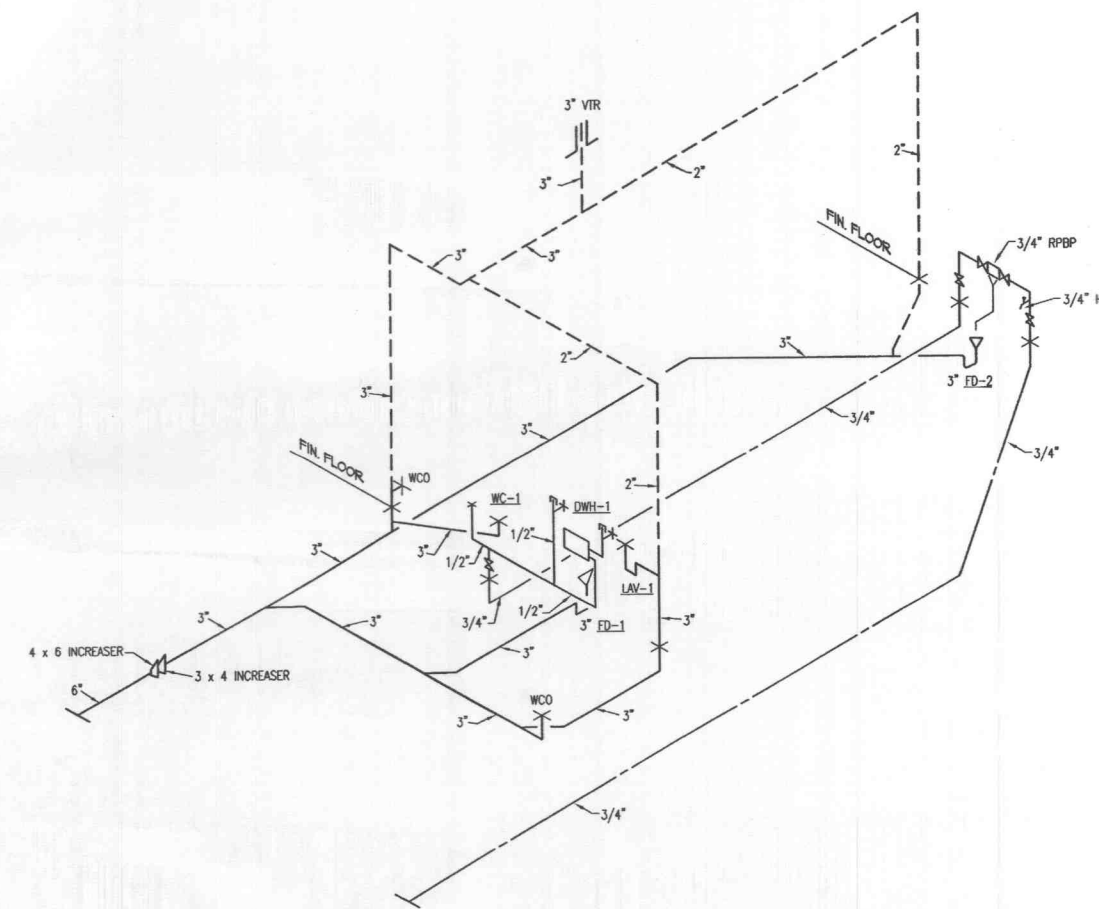
1 HVAC FLOOR PLAN
SCALE: 1/2" = 1'-0"



2 PLUMBING FLOOR PLAN
SCALE: 1/2" = 1'-0"



(ALTERNATE #1.)
4 HVAC FLOOR PLAN
SCALE: 1/2" = 1'-0"



3 PLUMBING RISER DIAGRAM
SCALE: NONE

SYMBOLS & ABBREVIATIONS

| | |
|-----|--------------------------------------------|
| --- | COLD WATER PIPING (CW) |
| --- | HOT WATER PIPING (HW) |
| --- | SANITARY SEWER PIPING |
| --- | VENT PIPING |
| --- | REDUCED PRESSURE BACKFLOW PREVENTER (RPBP) |
| --- | SHUT-OFF VALVE |
| --- | FLOOR DRAIN (FD) |
| --- | HOSE BIBB (HB) |
| --- | WATER CLOSET (WC) |
| --- | LAVATORY (LAV) |
| --- | DOMESTIC WATER HEATER (DWH) |
| --- | VENT THRU ROOF (VTR) |
| --- | YARD CLEANOUT (YCO) |
| --- | REFRIGERANT SUCTION (RS) |
| --- | REFRIGERANT LIQUID (RL) |

HVAC GENERAL NOTES:

- THIS DRAWING IS DIAGRAMMATIC IN NATURE. CONTRACTOR TO COORDINATE ALL WORK WITH OTHER TRADES PRIOR TO CONSTRUCTION.
- EQUIPMENT MANUFACTURERS AND MODEL NUMBERS LISTED ARE A STANDARD OF QUALITY. SUBSTITUTIONS WILL BE CONSIDERED. SUBMIT PRODUCT DATA FOR ALL EQUIPMENT TO ENGINEER FOR REVIEW.

HVAC KEYED NOTES:

- PROVIDE DUCTLESS-SPLIT SYSTEM INDOOR UNIT, MITSUBISHI MODEL MS09NW. 8,500 BTUH CAPACITY. PROVIDE WITH WIRELESS REMOTE CONTROL. MOUNT UNIT WITH BOTTOM AT 7'-5" A.F.F.
- PROVIDE DUCTLESS-SPLIT SYSTEM OUTDOOR UNIT, MITSUBISHI MODEL KH122WES. ROUTE REFRIGERANT PIPING UP OUTSIDE WALL. PENETRATE WALL ABOVE CEILING AND ROUTE TO INDOOR UNIT. PROVIDE 1/2 INCH THICK FLEXIBLE ELASTOMERIC INSULATION ON REFRIGERANT SUCTION PIPING.
- PROVIDE LITTLE GIANT MODEL EC-400 CONDENSATE PUMP. INSTALL RESERVOIR INSIDE A/C UNIT AND PUMP/CONTROLLER ABOVE CEILING. CONNECT RESERVOIR TO PUMP WITH 1/4" COPPER TUBING. ROUTE 1/4" COPPER TUBING FROM PUMP DISCHARGE ABOVE CEILING AND DOWN WALL AND DISCHARGE AT FLOOR DRAIN. INSULATE TUBING ABOVE CEILING WITH 1/2 INCH THICK FLEXIBLE ELASTOMERIC INSULATION.
- EXHAUST FAN EF-1 TO BE GREENHECK MODEL SP-6. 75CFM @ 0.25 IN WG. PROVIDE SOLID STATE SPEED CONTROL FOR BALANCING. PROVIDE BRICK VENT MODEL BV-8x8. INTERLOCK FAN WITH LIGHT SWITCH. SEE ELECTRICAL DRAWINGS.
- ELECTRICAL WALL HEATER WH-1 TO BE QMARK MODEL AMH-440B3 4.0 KW @ 208V, 60HZ, 3ø.
- ELECTRIC CEILING HEATER CH-1 TO BE QMARK MODEL EFF-400B. 4.0 KW @ 208V, 60HZ, 1ø. PROVIDE WITH LINE VOLTAGE WALL THERMOSTAT.
- ROUTE 1/2" COPPER CONDENSATE DRAIN PIPE DOWN IN WALL. DISCHARGE THRU WALL 6 INCHES ABOVE SIDEWALK.

PLUMBING FIXTURE SCHEDULE

| MARK | DESCRIPTION | WASTE | VENT | H.W. | C.W. | REMARKS |
|-------|------------------------------|-------|------|------|------|---------|
| WC-1 | WATER CLOSET - FLOOR MOUNTED | 3" | 3" | - | 1/2" | ADA |
| LAV-1 | WALL MOUNT LAVATORY | 2" | 2" | 1/2" | 1/2" | ADA |
| FD-1 | FLOOR DRAIN | 3" | 2" | - | - | |
| FD-2 | FLOOR DRAIN w/FUNNEL | 3" | 2" | - | - | |
| HB-1 | HOSE BIBB | - | - | - | 3/4" | |
| DWH-1 | DOMESTIC WATER HEATER | - | - | 1/2" | 1/2" | |

WC-1 Water Closet

- Fixture: Kohler K-3427, vitreous china, tank type, elongated bowl, white color, 1.6 gpf.
- Seat: Bemis 3155C, open front seat less cover, white color, antimicrobial agent.

LAV-1 Lavatory

- Fixture: Kohler K-2867, vitreous china, wall hung, punched for chair carrier, 4-inch centers, white in color.
- Faucet: Symmons Symmetrix S-20-2-C-FR, Symmetrix single lever with grid strainer and 0.5 gpm flow restrictor.
- Supplies: NPS 3/8 chrome-plated copper with stops.
- Trap: NPS 1-1/2, 17 gauge, chrome plated cast brass.
- Accessories: TrueBro insulation kit, white in color.

DWH-1 Domestic Water Heater

Chronomite "S-46L", 4600 watts, 208 v, 22 amps, 63 deg. Rise @ 0.5 gpm.

FD-1 J.R. Smith series 2005 floor drain, cast iron body with nickel bronze strainer.

FD-2 J.R. Smith series 2005 floor drain, cast iron body, nickel bronze strainer with funnel.

HB-1 Hose Bibbs: Bronze body with replaceable seat disc complying with ASME A112.18.1M for compression-type faucets. Include NPS 3/4 solder-joint inlet, of design suitable for pressure of at least 125 psig.

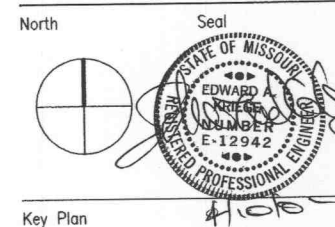
RPBP Reduced-Pressure-Principle Backflow Preventer: ASSE 1013, suitable for continuous pressure application. Include ball valves on inlet and outlet, and strainer on inlet; test cocks; and pressure-differential relief valve with ASME A112.1.2 air-gap fitting located between two positive-seating check valves.

Domestic Water Piping above grade: Hard copper tube, ASTM B 88, Type L water tube with copper pressure fittings.

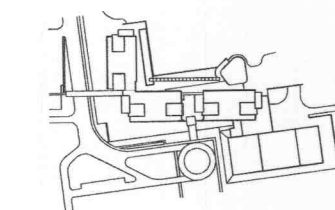
Domestic Water Piping below grade: Soft copper tube, ASTM B 88, Type K water tube.

Sanitary Waste and Vent Piping: PVC Pipe, Schedule 40, ASTM D 2665, solid-wall with PVC Socket fittings.

Issue
Date Description Drawn Chk



Key Plan



Date 19 DEC. 2001 Project Code 98-0478-00
Drawn KPS/ALM Checked GEB/GPM
CAD File 406M2-1.dwg

Scale

Original drawing sheet is 48" x 36" scale accordingly if red.

HVAC AND PLUMBING FLOOR PLAN, DETAILS AND SCHEDULES

Drawing Number

M2.1