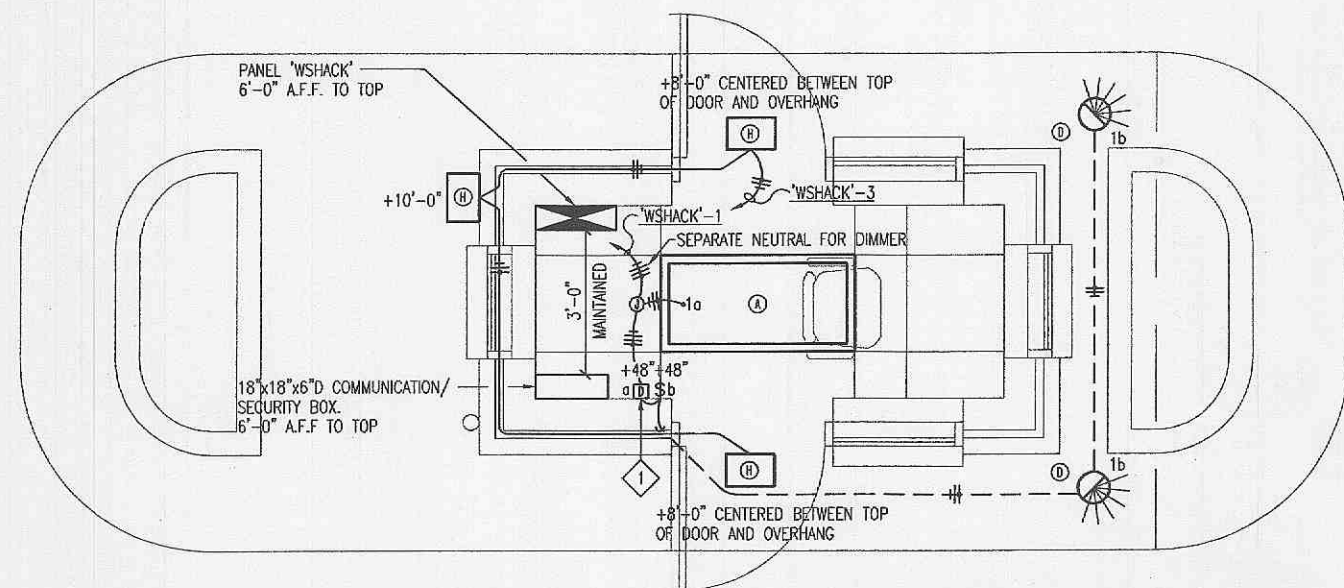
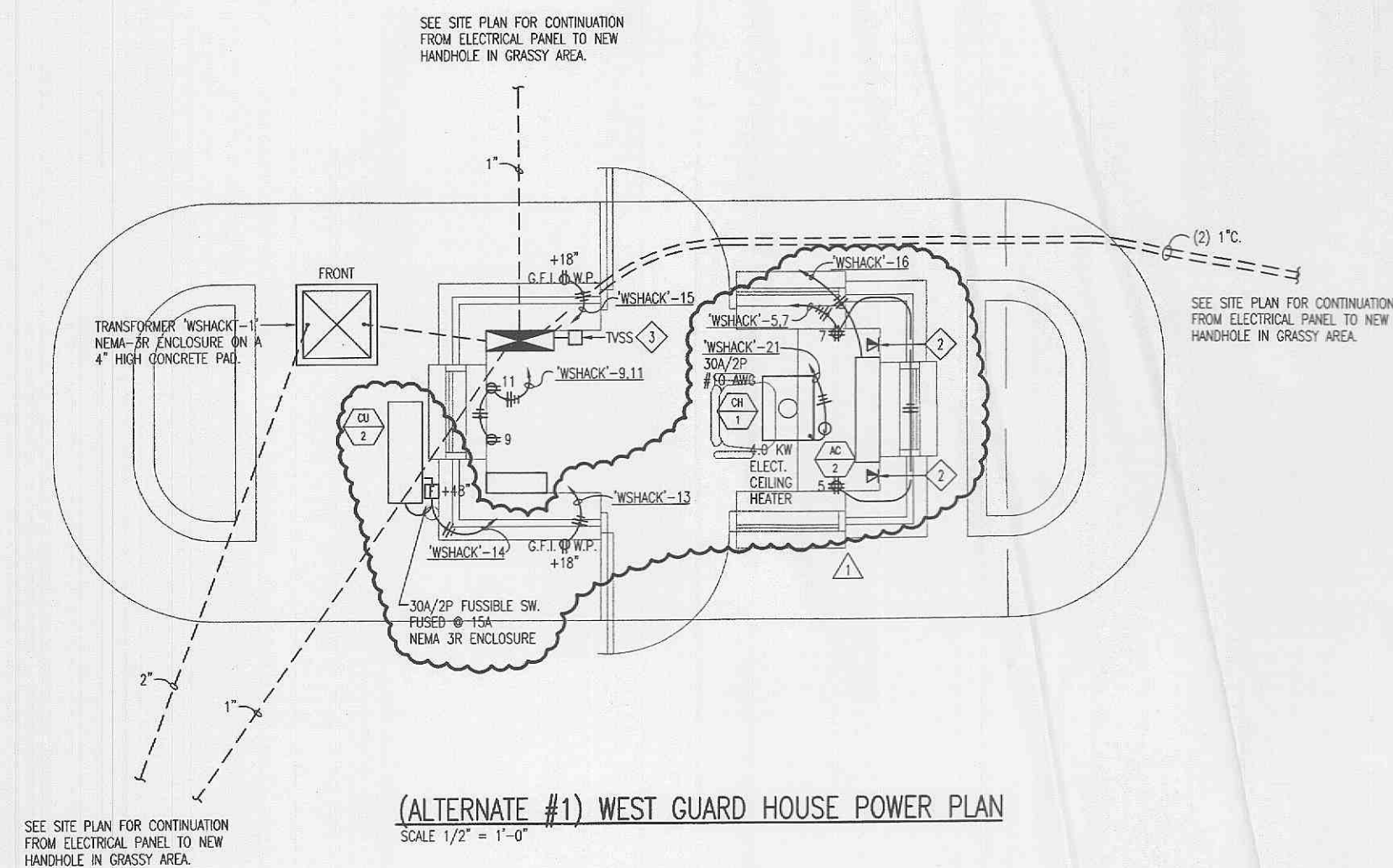


(BASE BID) SMALL NORTH GUARD HOUSE

1. BASE BID TO BE A PREFABRICATED GUARD HOUSE STRUCTURE. REFERENCE ARCHITECTURAL DRAWINGS AND SPECIFICATIONS FOR DESCRIPTION OF STRUCTURE.
2. CONTRACTOR TO INCLUDE IN BASE BID - ALL ITEMS SHOWN EXTERIOR TO THE BUILDING AS SHOWN IN THE ALTERNATE #1 PLANS, INCLUDING TRANSFORMER, POWER FEED CONNECTION TO PREFAB STRUCTURE, CONNECTION OF SECURITY/COMMUNICATIONS INTO PREFAB STRUCTURE, EXTENSION OF FUTURE POWER AND SECURITY PIPE TO HANDHOLES EXTERIOR TO THE STRUCTURE FOR FUTURE USE, SECURITY GATES, TIRE SHREDDERS, CARD READERS, BOLLARD LIGHTS/CONDUIT/WIRE TO SWITCH IN BUILDING.
3. CONTRACTOR TO INCLUDE IN BASE BID - THE FOLLOWING ITEMS SHOWN INTERIOR AND MOUNTED ONTO THE BUILDING, AS SHOWN IN ALTERNATE #1, AS FOLLOWS: MAIN SECURITY/COMMUNICATION BOX, SECURITY PIPING TO FRONT OF GUARD STATION, SECURITY PIPING AND POWER PIPING FOR SECURITY CAMERAS ON ROOF AND SIDE OF BUILDING, KNOX BOX AND ROUGH-IN FOR FIRE DEPARTMENT OVERRIDE OF GATES, SURGE SUPPRESSOR TO BE INSTALLED INTO ELECTRICAL PANEL FURNISHED WITH PREFAB UNIT.



(ALTERNATE #1) WEST GUARD HOUSE LIGHTING PLAN
SCALE 1/2" = 1'-0"



(ALTERNATE #1) WEST GUARD HOUSE POWER PLAN
SCALE 1/2" = 1'-0"

GENERAL NOTES:

1. ALL CONDUIT RUNNING ON WALLS, TO BE RUN CONCEALED. CONDUIT MAY BE EXPOSED ABOVE ACCESSIBLE CEILING AND WHEN GOING DOWN OR UP WALL TO MAIN PANELBOARD. RECEPTACLES TO BE MOUNTED 1'-6" A.F.F. OR TO NEXT HIGHER MASONRY COURSE JOINT.
2. ALL CONDUIT TO BE A MINIMUM OF 3/4" UNLESS NOTED OTHERWISE.
3. PVC SCHEDULE 40 TO TRANSITION TO GALVANIZED RIGID STEEL CONDUIT ABOVE GRADE. SPECIFICALLY UP TO POWER PANEL AND COMMUNICATION BOX, IN EACH GUARD SHACK, TO PREVENT DAMAGE.

KEYED NOTES:

1. LUTRON NOVA T-STAR ELECTRONIC FLUORESCENT DIMMER #NITF-10-IV
2. STUB A 3/4". TO ABOVE ACCESSIBLE CEILING AND BUSH CONDUIT. CONDUIT TO BE CONCEALED IN MASONRY BLOCK AND STUB OUT OF BLOCK WHEN ABOVE ACCESSIBLE CEILING.
3. PROVIDE A ADVANCED PROTECTION TECHNOLOGIES TRANSIENT VOLTAGE SURGE SUPPRESSOR CAT # TE/2X/FRM/EM 80 WA/PHASE, 120/208VAC, 4-WIRE + GND, L-N, L-G, N-G, L-L, STATUS LIGHT AND FLUSH MOUNT OPTION. CONNECT INTO GUARD SHACK PANEL BY USING A 30A/3P BREAKER WITH #10AWG WIRES FOR CONNECTION TO THE 3-PHASES, NEUTRAL AND GROUND AT THE PANEL. SEE PANEL SCHEDULE. (OR EQUAL BY LEBERT)



MASTERCARD

0' Fallon Missouri
Prepared for
MASTERCARD INTERNATIONAL
12115 Lockland Road
St. Louis, MO 63146
Contact Number:

HELLMUTH, OBATA + KASSABAUM, P.C.



620 Avenue Of The Americas
New York, New York 10011
T212.741.1200. F212.633.1163.

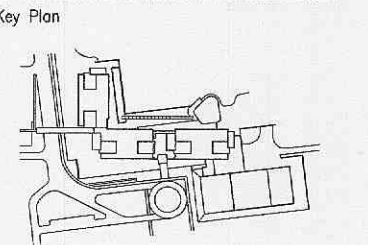
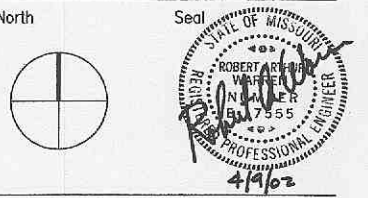


211 North Broadway, Suite 600
St. Louis, MO 63102 USA
T314.421.2000. F314.421.6073.

All reproduction & intellectual property rights reserved ©2001 HOK
In association with

EDM INCORPORATED
STRUCTURAL, CIVIL, AND MEP ENGINEERS
220 Mansion House Center
St. Louis, MO 63102-1902
T. 314.231.5485 F. 314.231.6167

Issue	#	Date	Description	Drwn	Chk
1				PW	RGH



Date 19 DEC. 2001 Project Code 98-0478-001
Drawn Checked
CAD File E2.1.DWG
Scale AS NOTED

Original drawing sheet is 48" x 36" - Scale accordingly if reduced

WEST GUARD HOUSE PLAN

Drawing Number **E2.3**