



Regions to
MASTERCARD
 0 color Missouri
 Prepared for
MASTERCARD INTERNATIONAL
 Client location
 HELMUTH, OBATA + KASSABAUM, P.C.

NYC
 620 Avenue of The Americas
 New York, New York 10011
 212.724.1200, 719.633.1163

STL
 211 North Broadway, Suite 600
 St. Louis, MO 63107, USA
 314.421.2000, 314.421.8073

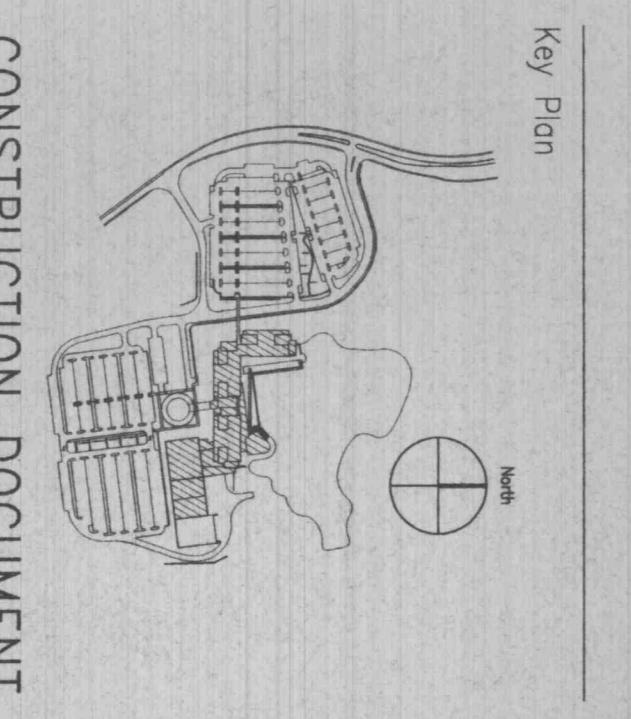
In association with
MAZZETTI & ASSOCIATES
 MEP ENGINEERS
 330 BUSH STREET 94108-4823
 ST. LOUIS, MISSOURI 63101
 T. 415.362.2066 F. 425.362.2067

EDM Incorporated
 220 Market Street, Suite 200
 St. Louis, MO 63102-1822
 T. 314.231.5465 F. 314.231.8167

CONSULTANT ABC
 CONSULTANT ABC

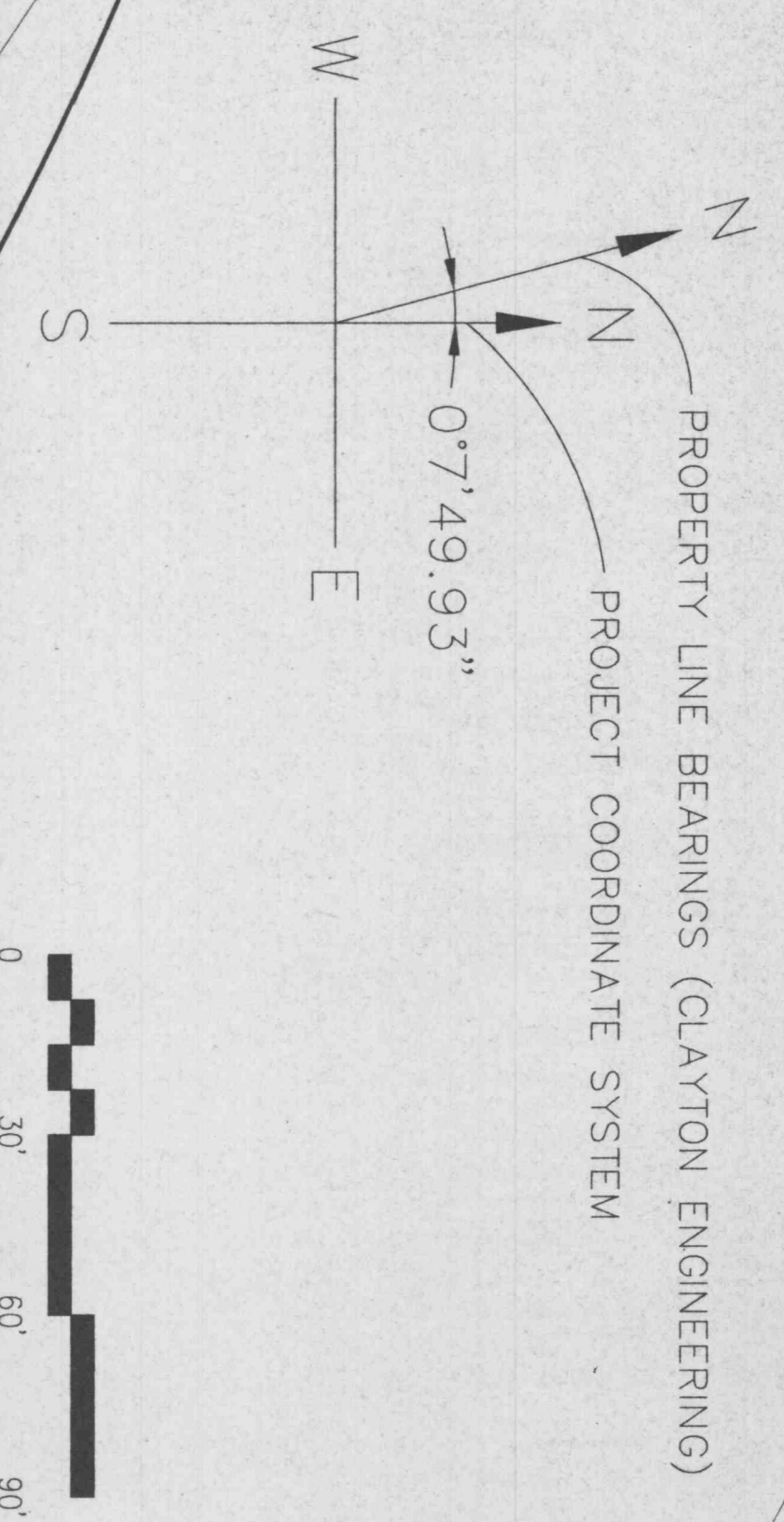
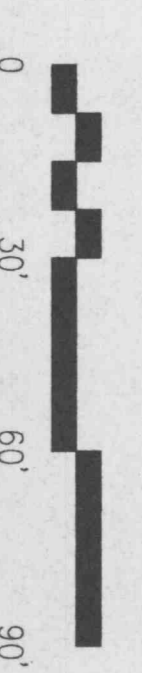
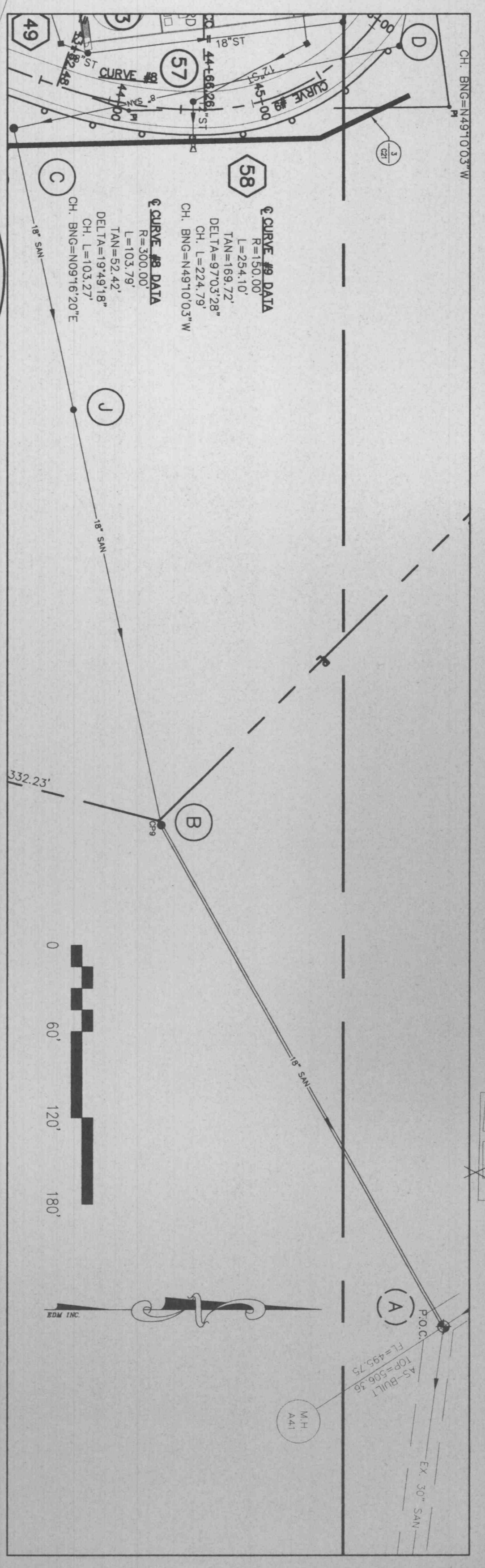
Issue	Date	Description	Drawn	CHK
1	5-20-99	ISSUED FOR CD'S	ONE	SAK
2	5-14-99	ADDENDUM 3	ONE	SAK

Issue	Date	Description	Drawn	CHK
1	5-20-99	ISSUED FOR CD'S	ONE	SAK
2	5-14-99	ADDENDUM 3	ONE	SAK



CONSTRUCTION DOCUMENT
 Date: 28 MAR 99 Project Code
 Drawn: OMB Checked: SAK
 CDD File: C1-CADWG
 Scale: 1" = 30'

Drawing Number
C.2
 LAYOUT PLAN
 NORTHEAST



- NOTES:**
1. ROADWAY CURVE DATA IS TO CENTER-LINE OF ROAD.
 2. DIMENSIONS FOR ALL RADII ARE TO BACK OF CURB. ALL OTHER DIMENSIONS ARE TO FACE OF CURB.
 3. SEE SHEET C3 FOR COORDINATE TABLES.
 4. SEE LANDSCAPE (L) SHEETS FOR SIDEWALK LAYOUT AND DETAILS.
 5. ALL STRIPING SHALL BE 4" WIDE.
 6. INSTALLATION AND MATERIALS FOR CONCRETE AND ASPHALT SHALL CONFORM WITH "ST. LOUIS COUNTY STANDARD SPECIFICATIONS FOR HIGHWAY CONSTRUCTION" DATED JANUARY 1, 1997.

