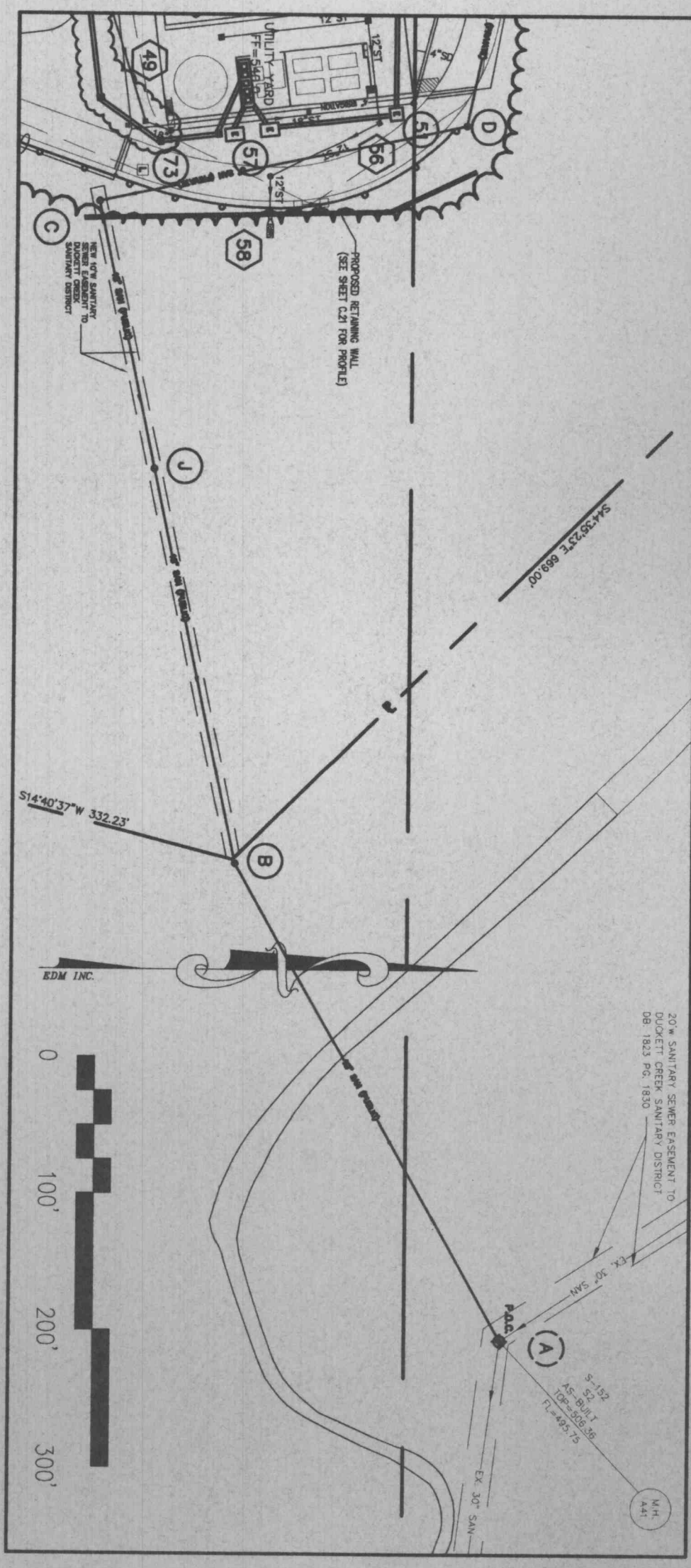


LEGEND	
□	SHOEDY FUTURE TYPE XXX
□	SHOEDY FUTURE TYPE YYY
□	SHOEDY FUTURE TYPE ZZZ
○	PEDESTRIAN FUTURE TYPE
◊	SEWERAGE FUTURE TYPE
◊	WALL SOURCE FUTURE TYPE
—	EXISTING POWER
—	EXISTING NATURAL GAS
—	EXISTING TELECOMMUNICATIONS
■	PROPOSED MANHOLE
●	PROPOSED FLARED END SECTION
—	PROPOSED NATURAL GAS
—	PROPOSED TELECOMMUNICATION
—	PROPOSED POWER
—	PROPOSED WATER
—	PROPOSED FIRE HYDRANT
—	PROPOSED STORM SEWER
—	PROPOSED SANITARY SEWER
—	POINT OF CONNECTION
—	PROPOSED FIRE WATER

NOTE: 1.) SEE SHEET C.12 FOR UTILITY NOTES.



Reference to
MASTERCARD
of the
MasterCard International
Client Location
Contract Number

NYC
620 Avenue of the Americas
New York, New York 10011
1212.741.1200, 212.853.1183

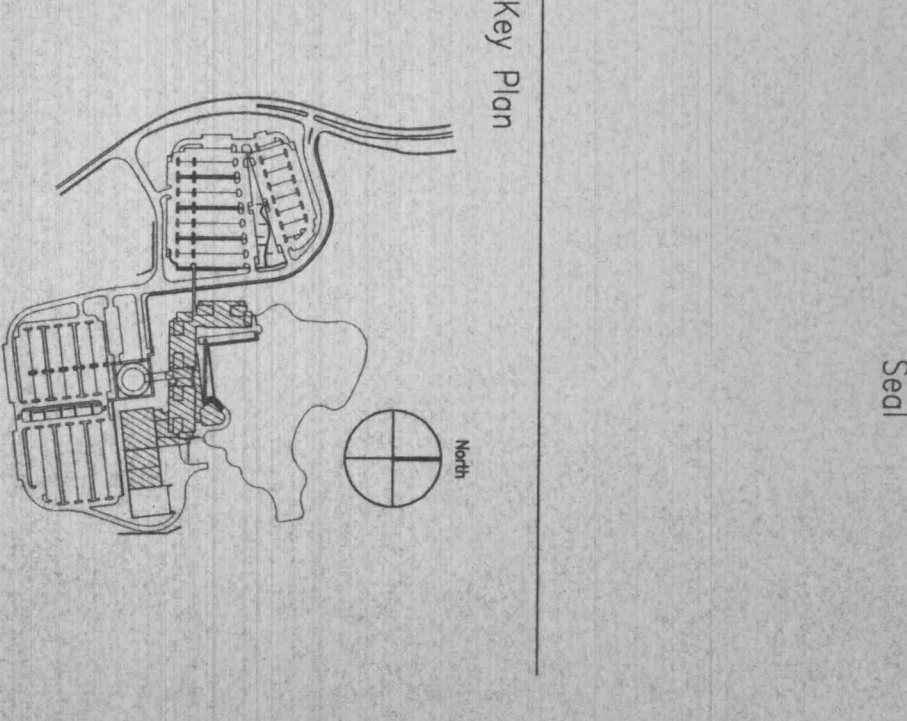
STL
211 North Broadway, Suite 600
St. Louis, MO 63102, USA
1314.421.2000, 314.421.8073

MAZZETTI & ASSOCIATES
WEP ENGINEERS
330 BISH STREET
SAN FRANCISCO, CA 94108-3623
415.392.3288 F: 415.392.3870

EDM Incorporated
2200 W. 10th Street
St. Louis, MO 63103-1902
F: 314.231.5465 F: 314.231.8167

CONSULTANT ABC
CONSULTANT ABC

Issue	Date	Description	Drawn	Checked
1	1-20-99	ISSUED FOR PERMITS	DMG	SMS
2	4-1-99	REVISED FOR PERMITS	DMG	SMS
3	8-11-99	ISSUED TO PERMITS	DMG	SMS
4	1-14-99	ISSUED TO PERMITS	DMG	SMS
5	7-27-99	ISSUED FOR CD'S	DMG	SMS
6	10-5-99	ADDENDUM 3	DMG	SMS



CONSTRUCTION DOCUMENT
Date 20 MAY 99 Project Code
Drawn DMG Checked SMS
CDD File 011.DWG
Scale 1" = 30'

SITE UTILITY PLAN
NORTHEAST

Drawing Number
C.11