

North Entrance Drive			
Sta. No.	Sta. Type	N	E
9+96.88	BEGIN	89812.26	61544.39
10+33.20	P.C.	89800.73	61578.84
11+14.63	P.I.	89774.87	61656.05
11+90.64	P.T.	89799.45	61733.67
13+77.34	P.C.	89855.81	61911.67
15+16.60	P.I.	89807.85	62044.44
16+31.47	P.T.	89807.08	62150.07
16+79.08	P.C.	89776.05	62186.18
17+75.91	P.I.	89712.95	62259.62
18+63.84	P.T.	89616.84	62271.40
23+81.19	ANGLE PT	89103.33	62334.32
26+52.52	P.C.	88833.35	62361.35
26+63.74	P.I.	88822.18	62362.47
26+74.92	P.T.	88811.31	62365.23
29+65.04	P.C.	88530.15	62436.77
30+97.08	P.I.	88402.19	62469.32
31+81.57	P.T.	88418.25	62600.38
38+05.90	P.C.	88494.18	63220.07
39+50.53	P.I.	88511.77	63353.62
40+36.05	P.R.C.	88655.87	63351.28
41+10.69	P.I.	88730.24	63344.91
41+83.13	P.C.	88900.74	63369.44
43+62.48	P.T.	88970.12	63428.37
44+14.90	P.I.	89019.63	63445.59
44+66.26	P.C.C.	89072.04	63445.01
46+35.98	P.I.	89241.75	63443.12
47+20.36	P.T.	89219.02	63274.93
49+35.99	END	89190.14	63061.24

North Employee Entry Traffic Control Station			
Struc. No.	Struc. Type	N	E
North Corner	Control Booth	89835.14	62031.27
South Corner	Control Booth	89812.98	62038.56
West Corner	Control Booth	89826.06	62023.42
East Corner	Control Booth	89822.06	62046.40

South Employee Entry Traffic Control Station			
Struc. No.	Struc. Type	N	E
North Corner	Control Booth	8+021.11	61822.29
South Corner	Control Booth	89009.50	61815.26
West Corner	Control Booth	89014.93	61812.00
East Corner	Control Booth	89015.68	61825.55

Storm Sewers			
Struc. No.	Struc. Type	N	E
5	EX. INLET	89823.70	62009.88
5	MH	89823.70	62009.88
5.1	INLET	89818.40	61993.00
68.1	MH	89790.02	62076.96

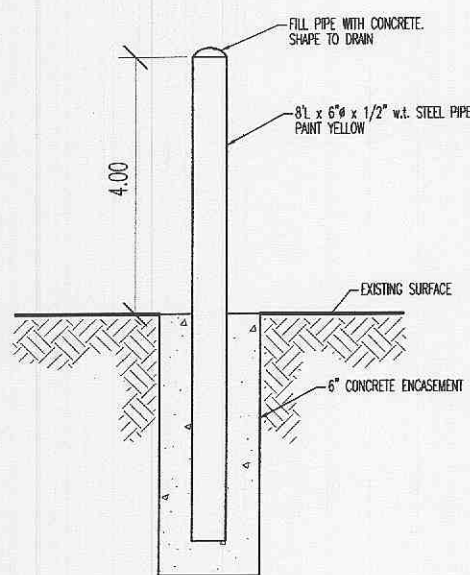
Control			
Point No.	Description	N	E
CP1	PL CORNER	89878.64	61645.39
CP2	PL CORNER	89857.70	61701.94
CP3	PL CORNER	89828.57	61711.78
CP4	PL CORNER	89913.26	61962.30
CP5	PL CORNER	89913.63	62074.63
CP6	PL CORNER	89824.11	62250.63
CP7	PL CORNER	89716.73	62376.18
CP8	PL CORNER	89516.17	63468.42
CP9	PL CORNER	89040.81	63939.16
CP10	PL CORNER	88719.23	63855.72
CP11	PL CORNER	88653.04	63384.48
CP12	PL CORNER	88464.47	63480.15
CP13	PL CORNER	88330.98	62474.59
CP14	PL CORNER	89052.28	62226.87
CP15	PL CORNER	89048.99	61991.93
CP16	PL CORNER	88865.83	61782.00
CP17	PL CORNER	88994.17	61692.33
CP18	PL CORNER	89196.67	61617.17
CP19	PL CORNER	89340.83	61578.83
CP20	PL CORNER	89488.33	61565.08
CP21	PL CORNER	89636.67	61576.25
CP22	PL CORNER	89780.83	61612.08

South Entrance Drive			
Sta. No.	Sta. Type	N	E
0+96.53	BEGIN	88930.60	61675.68
3+62.98	P.C.	89067.70	61904.15
4+32.23	P.I.	89103.33	61963.51
4+98.10	P.T.	89103.33	62032.78
7+99.63	END	89103.33	62334.32

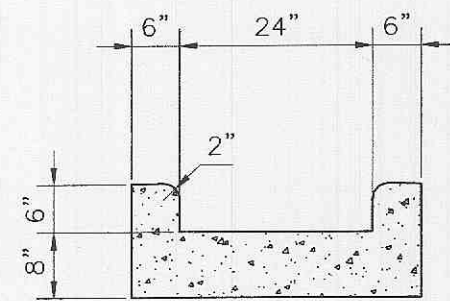
Sanitary Sewers			
Struc. No.	Struc. Type	N	E
K	POC	89311.89	95576.46
L	MH	89541.17	62548.32
M	MH	89541.17	62413.32
N	MH	89541.17	62368.32
O	MH	89697.73	62353.00
P	MH	89820.00	62228.89
Q	MH	89869.50	62139.33
R	MH	89814.80	62093.30

Grading Notes

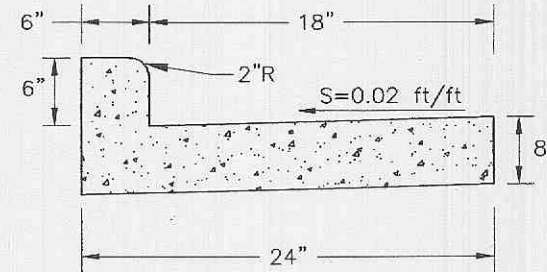
- Proposed contours and spot elevations represent finished grade (pavement surface, etc.).
- Contractor shall furnish, install and maintain erosion control devices, including, but not limited to: silt fences, straw bales, diversion channels and siltation basins. Erosion control measures shall be maintained until permanent ground cover is established and accepted by MasterCard. Erosion control shall be implemented before grading begins and shall follow the guidelines in the model sediment and erosion control regulations by St. Charles soil and water conservation district.
- All erosion control systems shall be inspected and necessary corrections made within 24 hours of any rainstorm resulting in one-half inch of rain or more.
- No graded area is to remain bare for over 6 months without being seeded and mulched.
- Also, when deemed necessary, positive steps shall be exercised to prevent soil from damaging adjacent property and silting-up storm drainage systems, whether on or off site.
- Fill shall not be placed on existing slopes steeper than 4(h) to 1(v); such slopes shall be benched.
- Finished graded slopes shall not be steeper than 3(h) to 1(v).
- High plastic clay shall not be used for fill under footings, slabs-on-grade or pavements.
- Bidders are advised that a geotechnical investigation of the site was performed by Reitz & Jens, Inc. Their report is dated April 26, 1999.
- FIRM Panel: 430, Map: 29183C0430 E, Map Revised: August 2, 1998, Zone X.



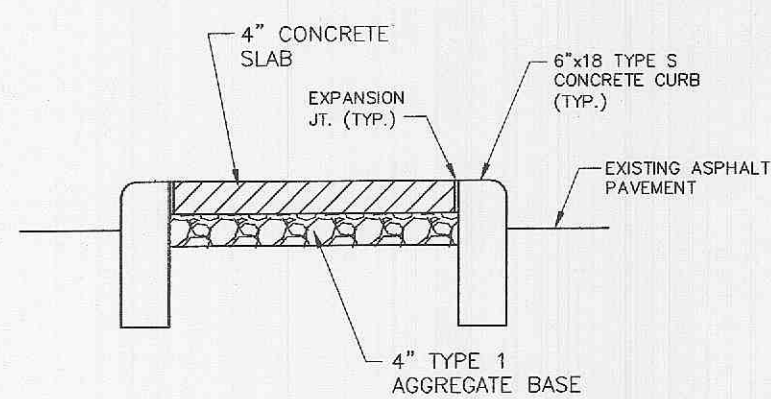
19 PIPE BOLLARD DETAIL
SCALE: NONE



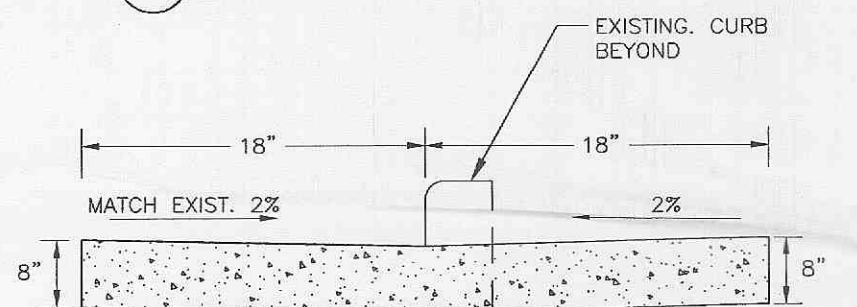
18 CONCRETE CURB GUTTER
SCALE: NONE



13 CONCRETE CURB AND GUTTER
SCALE: NONE

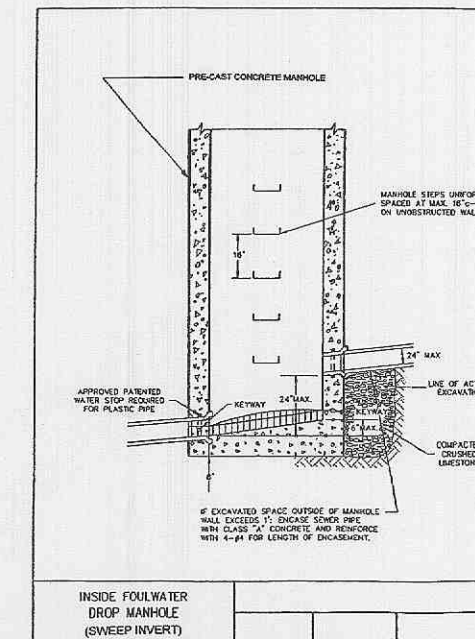


17 CARD READER ISLAND
(SEE SECURITY CONSULTANT
DRWGS + SPECS. FOR SIZE.)
SCALE: NONE



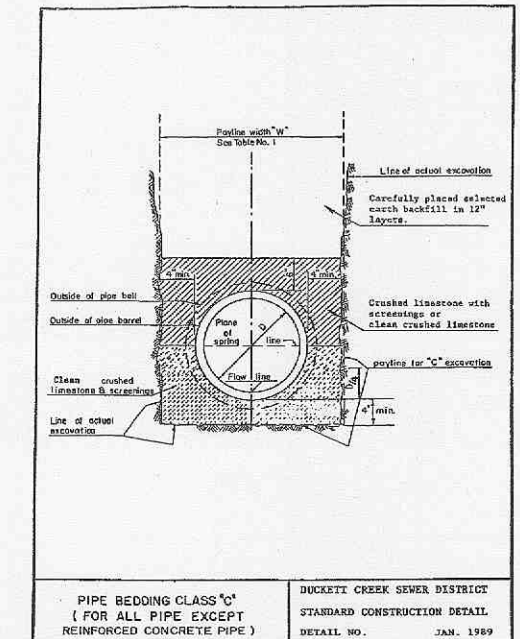
12 SERVICE PAVEMENT
(ENTRY ROADS, SERVICE DRIVE)
SCALE: NONE

8 OUTSIDE FOULWATER
DROP MANHOLE
SCALE: NONE



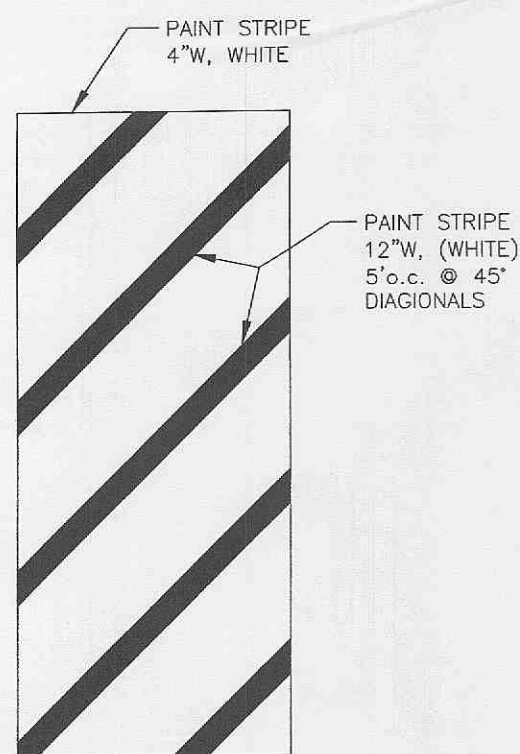
7 INSIDE FOULWATER
DROP MANHOLE
SCALE: NONE

4 MANHOLE STEP INTO JOINT
SCALE: NONE



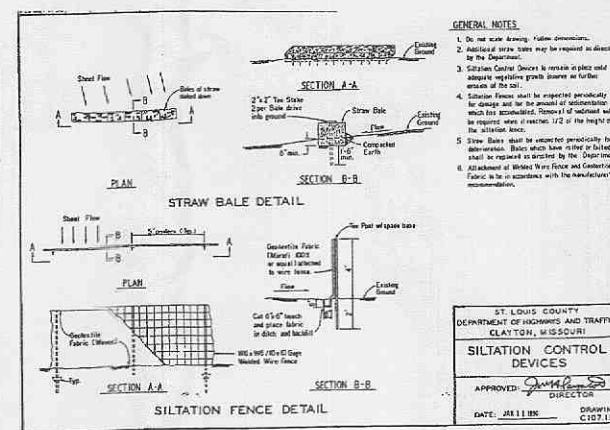
3 PIPE BEDDING CLASS "C"
SCALE: NONE

16 CONCRETE GUTTER
SCALE: NONE

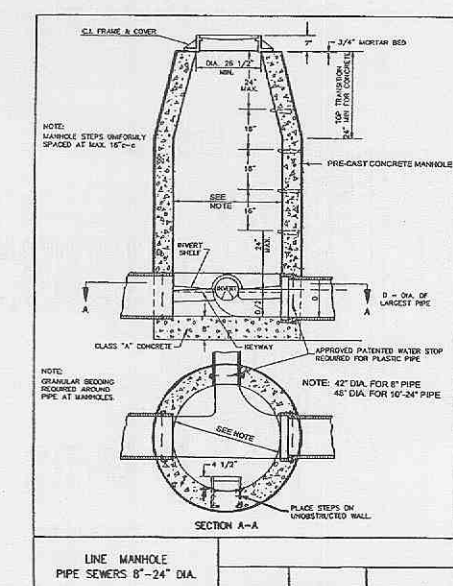


15 STRIPING
SCALE: NONE

11 ASPHALT PAVEMENT
(PARKING LOTS AND AISLES)
SCALE: NONE

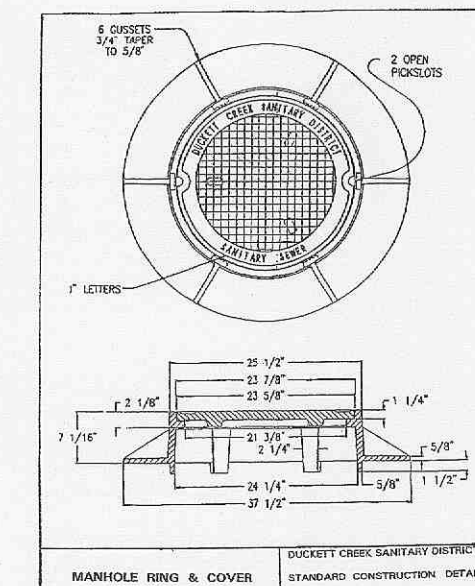


10 EROSION CONTROL
SCALE: NONE

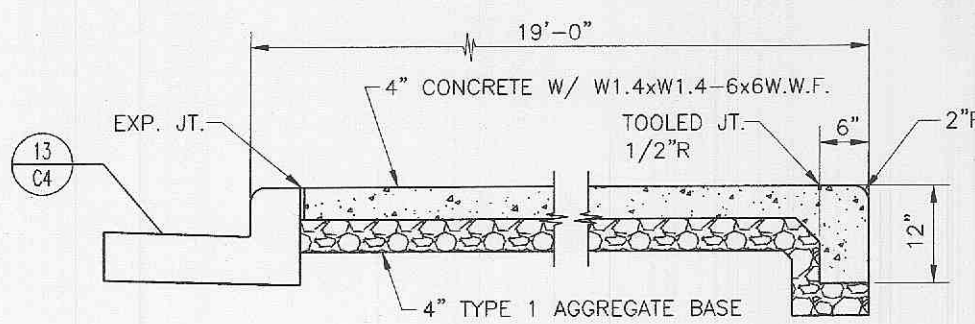


6 LINE MANHOLE
SCALE: NONE

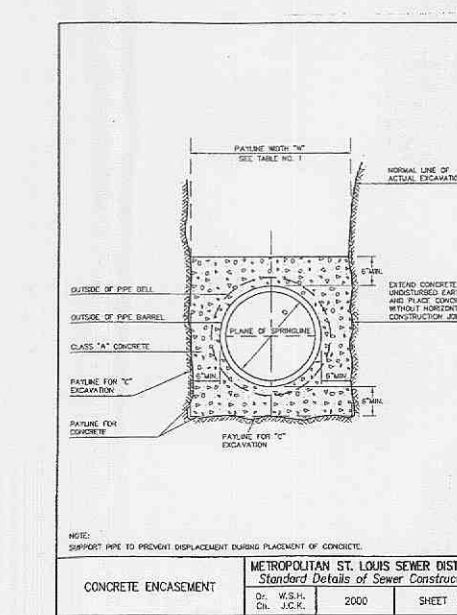
2 MANHOLE RING & COVER
SCALE: NONE



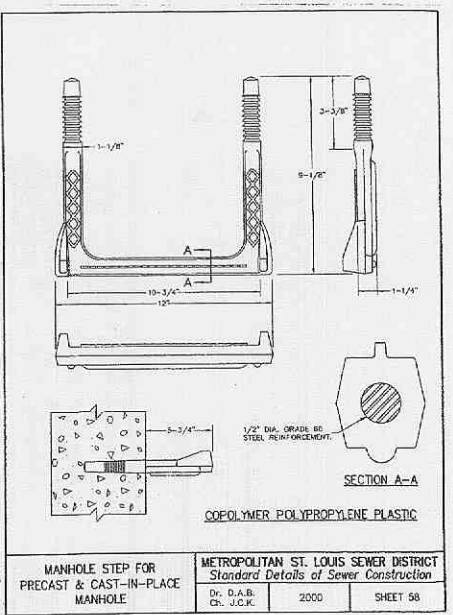
1 CAST IRON MANHOLE COVERS
SCALE: NONE



14 TRAFFIC CONTROL STATION
CONCRETE PAVEMENT
SCALE: NONE



9 CONCRETE ENCASEMENT
SCALE: NONE



5 MANHOLE STEP FOR
PRECAST MANHOLE
SCALE: NONE



MASTERCARD
0' Fallon Missouri

Prepared for
MASTERCARD INTERNATIONAL
12115 Lockland Road
St. Louis, MO 63146
Contact Number:

HELLMUTH, OBATA + KASSABAUM, P.C.

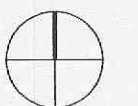
NYC
STL
620 Avenue Of The Americas
New York, New York 10011
T212.741.1200. F212.633.1163.

All reproduction & intellectual property rights reserved ©2001 HOK
In association with
EDM INCORPORATED
STRUCTURAL, CIVIL, AND MEP ENGINEERS
220 Madison House Center
St. Louis, MO 63102-1902
T. 314.231.5485 F. 314.231.8167

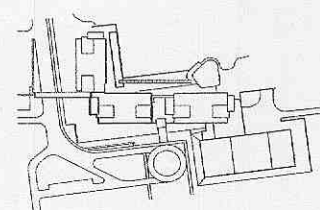


Issue
Date Description Drawn Chk

North Seal



Key Plan



Date 19 DEC. 2001 Project Code 98-0478-001
Drawn CMB Checked SMS
CAD File 99406C4.dwg

Scale

Original drawing sheet is 45" x 36" - Scale accordingly if reduced

DETAILS

Drawing Number

C.4