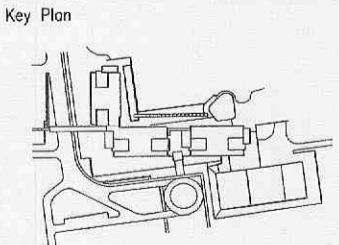
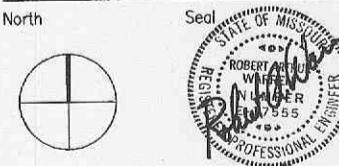


Issue

#	Date	Description	Drawn	Chk.



Date 19 DEC 2001 Project Code 98-0478-001
 Drawn Checked
 CAD File E1.1.DWG

Scale 1" = 30'

Original drawing sheet is 48" x 36" Scale accordingly if reduced

NORTH AND SOUTH GUARD HOUSE SITE PLAN

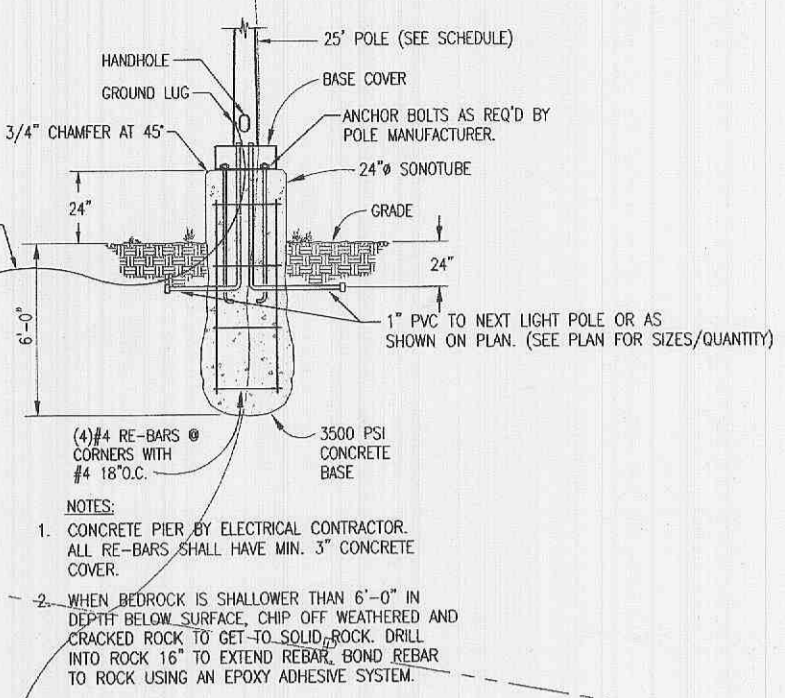
Drawing Number **E1.1**

GENERAL NOTES

- ALL NEW DIRECT BURIED CONDUIT TO BE PVC SCHEDULE 40. INSTALL PULL STRINGS IN ALL EMPTY CONDUIT.
- PVC SCHEDULE 40 TO TRANSITION TO GALVANIZED RIGID STEEL CONDUIT ABOVE GRADE SPECIFICALLY UP TO POWER PANEL AND COMMUNICATION BOX IN EACH GUARD SHACK TO PREVENT DAMAGE.
- ALL NEW QUAZITE HANDHOLES TO HAVE A 2'-0" DEEP GRAVEL BASE FOR DRAINAGE.

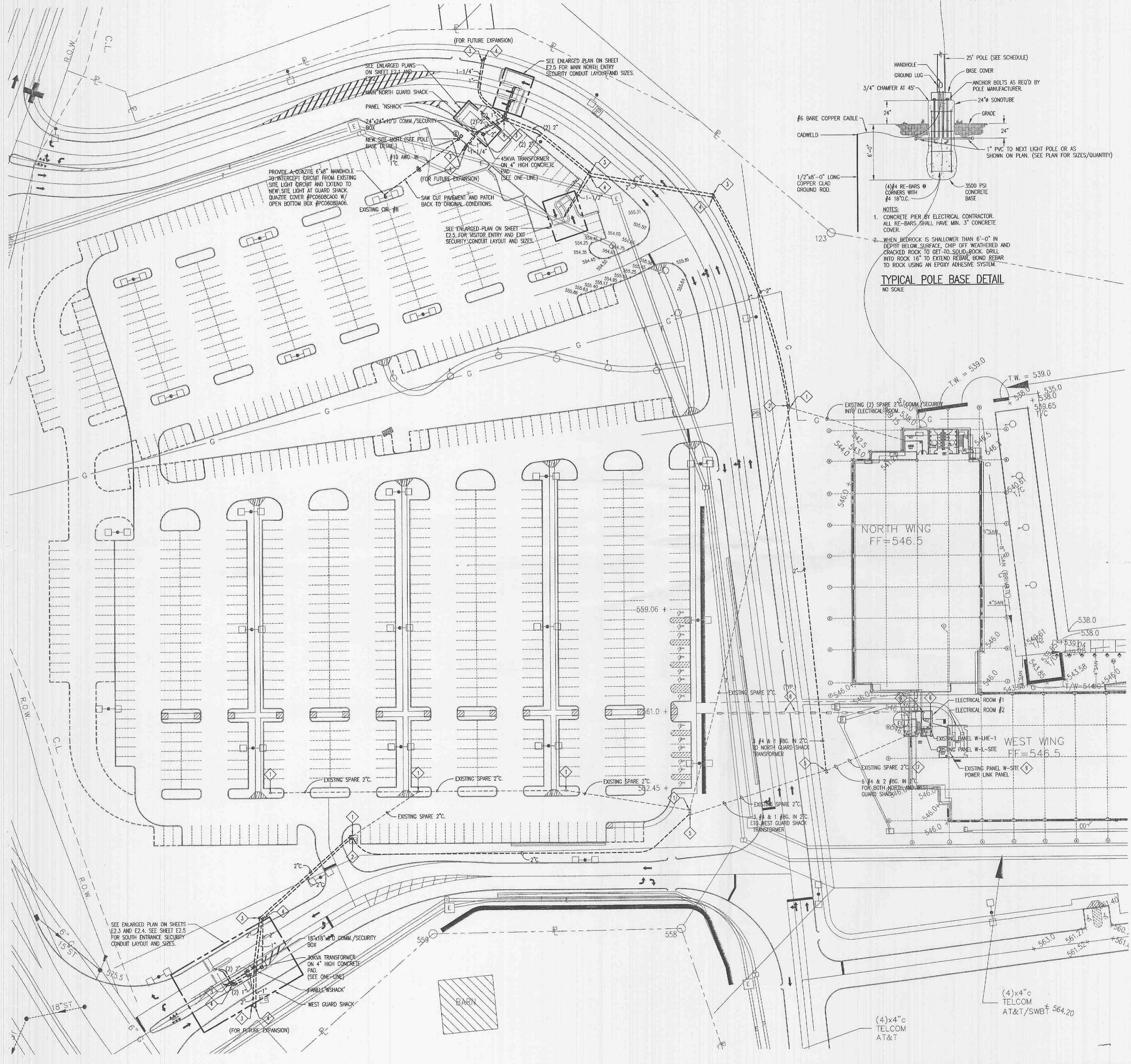
KEYED NOTES

- EXISTING QUAZITE COMMUNICATIONS/SECURITY HANDHOLE.
- NEW QUAZITE EMERGENCY POWER HANDHOLE 17"x30" W/BOX, COVER STYLE AND LOGO TO MATCH EXISTING QUAZITE HANDHOLES ON SITE. FURNISH W/LOCKABLE COVER.
- NEW QUAZITE COMMUNICATIONS HANDHOLE 13"x24" W/BOX, COVER STYLE AND LOGO TO MATCH EXISTING QUAZITE HANDHOLES ON SITE. FURNISH W/LOCKABLE COVER.
- NEW QUAZITE EMERGENCY POWER HANDHOLE 13"x24" W/BOX, COVER STYLE AND LOGO TO MATCH EXISTING QUAZITE HANDHOLES ON SITE. FURNISH W/LOCKABLE COVER.
- EXISTING QUAZITE EMERGENCY POWER HANDHOLE.
- NORTH GUARD SHACK POWERED FROM EXISTING PANEL W-LHE-1 CIRCUITS #25,27,29. WEST GUARD SHACK POWERED FROM EXISTING PANEL W-LHE-1 CIRCUITS #26,28,30.
- SPARE 2" PIPE ALREADY INSTALLED FROM PANEL W-L-SITE TO HANDHOLE OUTSIDE BUILDING (SEE PLAN). INSTALL NEW 16"x16"x4" DEEP JUNCTION BOX INTO EXISTING PIPE AS SHOWN ON ELEVATION. THIS ALLOWS THE 277/480V EMERGENCY POWER FROM PANEL W-LHE-1 (FOR THE GUARD SHACKS) TO RUN IN SAME SYSTEM AS THE 120/208V EMERGENCY POWER TO SITE CAMERAS.
- REMOVE EXISTING 11 BOLLARDS ON WALKWAY. REMOVE/CUT ANCHOR BOLTS AND CONDUIT TO BELOW SLAB ON WALKWAY. PATCH SIDEWALK BACK TO MATCHING CONDITIONS. REMOVE WIRE/CONDUIT BACK TO PANEL "W-SITE". KEEPING IN MIND THAT SOME OF THIS CONDUIT MAY BE REUSED TO FEED THE NEW OVERHEAD BRIDGE LIGHTING.
- INSTALL NEW 3/4" CONDUIT OR EXTEND EXISTING CONDUIT AS DESCRIBED IN NOTE-8 FROM PANEL "W-SITE" IN ELECTRICAL ROOM #2 TO ELECTRICAL ROOM #1 OF WEST WING LOWER LEVEL. CONDUIT TO PENETRATE UP TO ELECTRICAL ROOM STRAIGHT UP ON LEVEL-1. CONDUIT TO THEN PENETRATE OUT NORTH WALL TO POWER NEW COVERED WALKWAY LIGHTS. REUSE CIRCUIT #19 FROM "W-SITE" THAT WAS MADE AVAILABLE BY THE REMOVAL OF THE BOLLARDS ON THE BRIDGE. SEE SHEET E2.1 FOR BRIDGE LIGHTING.

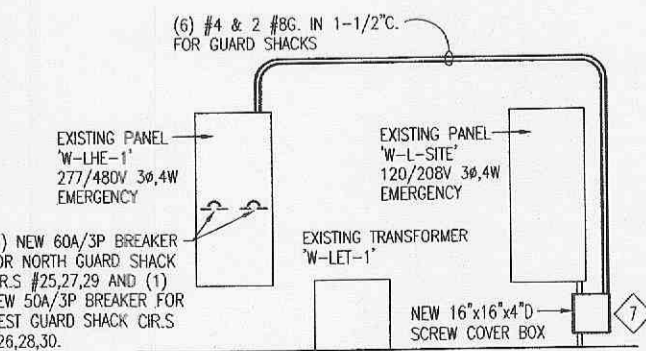


NOTES:
 1. CONCRETE PIER BY ELECTRICAL CONTRACTOR. ALL RE-BARS SHALL HAVE MIN. 3" COVER.
 2. WHEN BEDROCK IS SHALLOWER THAN 6'-0" IN DEPTH BELOW SURFACE, CHIP OFF WEATHERED AND CRACKED ROCK TO GET TO SOLID ROCK. DRILL INTO ROCK 16" TO EXTEND REBAR. BOND REBAR TO ROCK USING AN EPOXY ADHESIVE SYSTEM.

TYPICAL POLE BASE DETAIL
 NO SCALE



PANEL ELEVATION



(1) NEW 60A/3P BREAKER FOR NORTH GUARD SHACK CIR.S #25,27,29 AND (1) NEW 50A/3P BREAKER FOR WEST GUARD SHACK CIR.S #26,28,30.

NO SCALE