

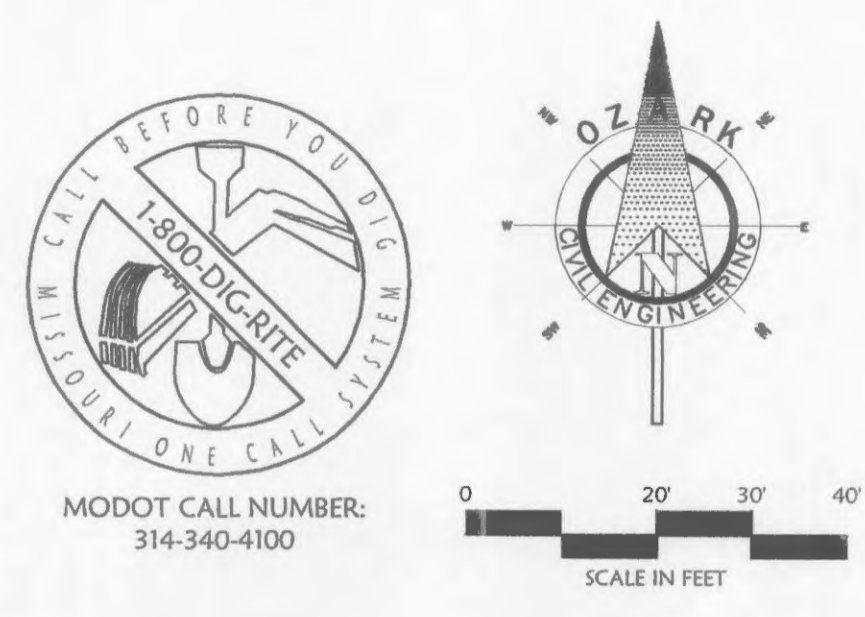
- SITE NOTES**
- XXX Items labeled by the following symbols are shown on this sheet.
  - S04 TAPER CURB TO MATCH EXISTING
  - S06 4" WIDE PAINTED STRIPES, 2" O.C. @ 45°
  - S08 4" WIDE LANE STRIPING (SEE PLAN FOR LENGTH AND COLOR)
  - S09 4" WIDE DOUBLE LANE STRIPING - PER M.U.T.C.D. (SEE PLAN FOR LENGTH AND COLOR)

- SIGN LEGEND**
- A HIGHWAY SIGN (EXISTING TO REMAIN)
  - B MENU BOARD - FP43
  - C CUSTOMER ORDER DISPLAY (COD)
  - D BOLLARD SIGN "ANY TIME, ANY LANE"
  - E INGRESS / EGRESS SIGNS
  - F PRESELL BOARD

ALL CURB RAMPS, RAMP AND ACCESSIBLE PARKING SPACES SHALL BE CONSTRUCTED IN ACCORDANCE WITH THE CURRENT APPROVED ADA ACCESSIBILITY GUIDELINES. IF ANY CONFLICT OCCURS BETWEEN THE ADA GUIDELINES AND THE PLANS, THE ADA GUIDELINES SHALL TAKE PRECEDENCE AND THE CONTRACTOR SHALL NOTIFY THE PROJECT ENGINEER PRIOR TO ANY CONSTRUCTION.

TRAFFIC CONTROL IS TO BE PER MODOT OR MUTCD WHICHEVER IS MOST STRINGENT.

LIGHTING VALUES WILL BE REVIEWED ON SITE PRIOR TO THE FINAL OCCUPANCY INSPECTION. CORRECTIONS WILL NEED TO BE MADE IF NOT IN COMPLIANCE WITH CITY STANDARDS.



- SITE DETAILS**
- S011 CONCRETE SWALE
  - S012 DRIVE-THRU PAD DETAIL
  - S013 CONCRETE CURB - 6" x 18"
  - S014 CONCRETE CURB AND GUTTER
  - S015 CURB AT TOP OF SLOPE
  - S017 "TYPE M" MOUNTABLE CURB
  - S010 DRY CONCRETE CURB AND GUTTER
  - S011 SIDEWALK WITH RAMP CONDITIONS
  - S012 SIDEWALK WITH RAMP CONDITIONS
  - S021 TYPICAL SIDEWALK DETAIL
  - S022 STANDARD CROSSWALKS
  - S023 PARKING STALL STRIPING
  - S024 DRIVE-THRU LANE STRIPING
  - S025 PAVEMENT MARKING STOP W/ BAR
  - S027 "STOP" SIGN
  - S028 R3-2 "NO LEFT TURN" SIGN
  - S029 ADA STALL MARKING
  - S0210 R4-7 "KEEP RIGHT" SIGN
  - S0212 HANDICAP PARKING SIGN
  - S023 PAVEMENT MARKING
  - S024 "MCDONALD'S DRIVE" CROSS SECTION
  - S051 MASONRY TRASH CORRAL AND STORAGE ENCLOSURE
  - S066 ASPHALT TRAIL
  - S067 8 CAPACITY BIKE RACK
  - S069 CURB CUT



\*ASPHALT PAVEMENT SECTION TO BE 3" ASPHALT COURSE COMPACTED TO 95% DENSITY AND 18" COMPACTED STONE BASE COMPACTED TO 98% MODIFIED PROCTOR (PER GEOTECH SPECIFICATIONS).

(REFER TO MCDONALD'S PROJECT MANAGER FOR FURTHER DETAILS)

**ACark**  
Civil Engineering Inc.  
Sup. Office: 1008 N.W. 1st St., Ste. C, Bonitaville, MO 64712  
(417) 464-8850 (V) / (417) 464-9000 (F)  
Regional Office: 11285 Strong Line, Ind. Lenexa, KS 66215  
(913) 310-0770 (V) / (913) 310-0261 (F)

- SITE PROPOSED FEATURES**
- BOUNDARY LINE
  - RIGHT OF WAY LINE
  - EASEMENT LINE
  - CONCRETE CURB AND GUTTER
  - FENCE
  - GUARD RAIL
  - RETAINING WALL
- LOCATION OF BUILDING CONTROL POINT  
PROPOSED PARKING SPACE COUNTER  
DROP INLETS (SEE GRADING PLAN FOR TYPE)  
SANITARY SEWER MAN-HOLE  
FIRE HYDRANT WITH GUARD POSTS  
UTILITY POLE
- CONCRETE PAVEMENT
  - CONCRETE SIDEWALK
  - ASPHALT TRAIL
  - ASPHALT PAVING ON MCDONALD'S DRIVE
  - DRY CONCRETE CURB AND GUTTER

**SITE GENERAL NOTES:**

COORDINATE LISTS IF ANY ON THIS PLAN ARE FOR INFORMATION AND CHECKING PURPOSES ONLY. IT IS THE CONTRACTOR'S RESPONSIBILITY TO CALCULATE CONTRIBUTION STAKING COORDINATES ACCORDING TO THE DIMENSIONS SHOWN ON THESE PLANS. THE CONTRACTOR SHALL VERIFY THE ACCURACY OF THE COORDINATES SHOWN ON THE PLANS BEFORE CONSTRUCTION BEGINS.

EXCEPT WHERE INDICATED OTHERWISE, PAVING SHALL BE STANDARD DUTY BITUMINOUS PAVEMENT. UNLESS OTHERWISE NOTED, ALL CURB INDICATED SHALL BE 2" CONCRETE CURB AND GUTTER.

ALL PARKING SPACES INDICATED AS HANDICAPPED SPACES SHALL RECEIVE HANDICAP PAVEMENT MARKING AND SIGNS AS INDICATED ON THE DETAIL SHEETS PER DETAIL S029. STALLS LABELED "VAN" TO RECEIVE A "VAN ACCESSIBLE" SIGN IN ADDITION TO THE ABOVE.

THE CONTRACTOR SHALL REFER TO THE ARCHITECTURAL PLANS FOR EXACT LOCATIONS AND DIMENSIONS OF THE VESTIBULE, GARDEN CENTER, BLOPED PAVING, PORCHES, BANKS, TRUCK DOCK, PRECISE BUILDING DIMENSIONS AND EXACT BUILDING UTILITY ENTRANCE POINTS.

PAINTED TRAFFIC MARKINGS AND ALL SIGNS, PAVEMENT MARKINGS ETC. SHALL BE APPLIED ACCORDING TO REQUIREMENTS AS OUTLINED IN SECTION 38 OF THE M.U.T.C.D. FOR STREET & HIGHWAYS.

GENERAL CONTRACTOR SHALL COORDINATE AND COMPLY WITH ALL UTILITY COMPANIES INVOLVED IN PROJECT AND PAY ALL REQUIRED FEES AND COSTS.

FOR SITE UTILITIES, SEE UTILITY PLAN.

ALL RADII SHALL BE 4' UNLESS OTHERWISE NOTED.

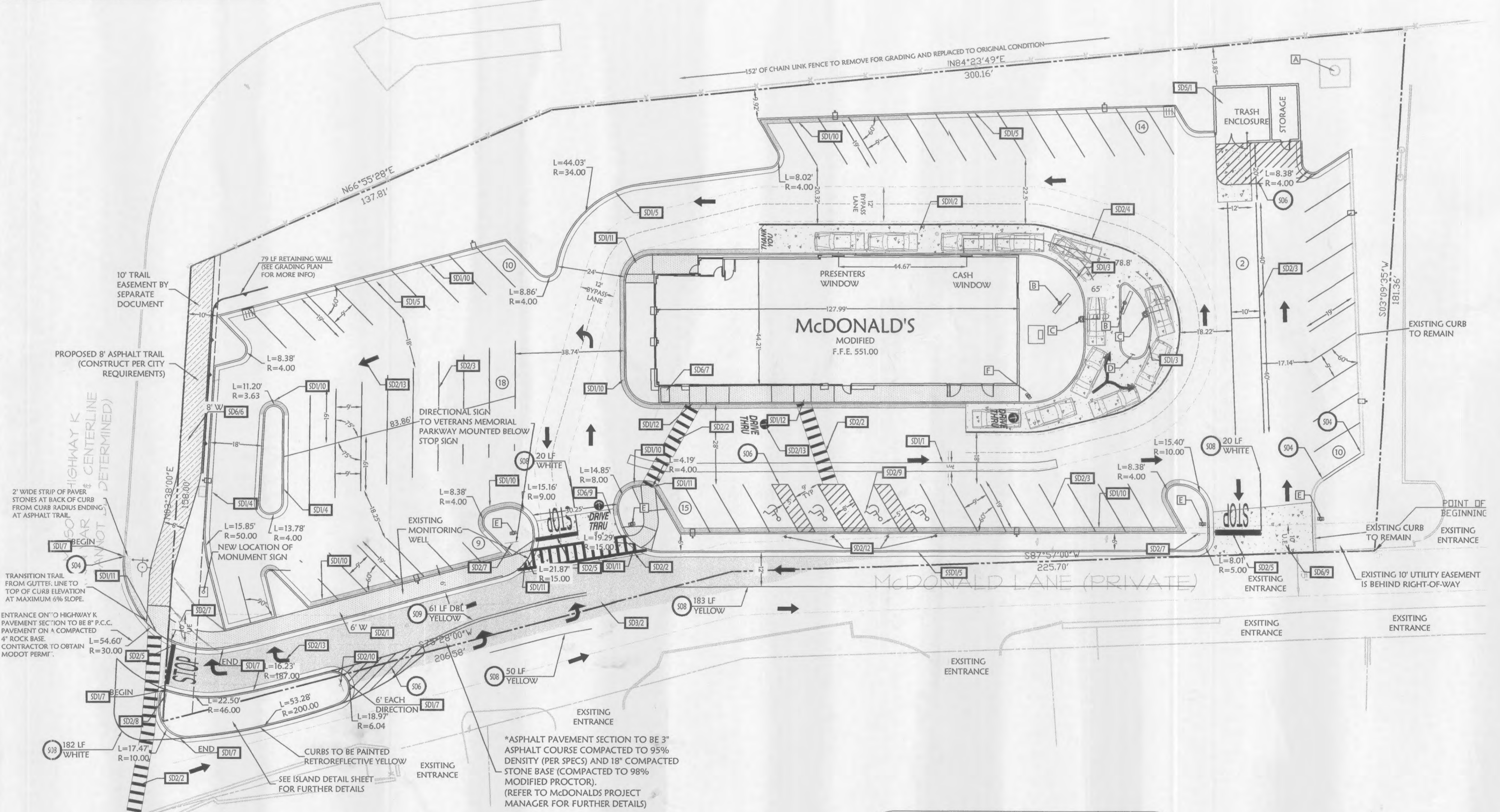
ALL DIMENSIONS, UNLESS OTHERWISE NOTED, ARE TO THE FACE OF CURB, FACE OF BUILDING OR CENTERLINE OF STRIKE.

ALL SIGN POSTS AND BACKS AND BRACKET ARMS SHALL BE PAINTED BLACK USING CARBOLIN BLENDED PENETRATING SEALER 52 AND CARBOLIN 133 HB PAINT FOR EQUIVALENT AS APPROVED BY CITY AND MUTCD.

SIGN DESIGNATING STREET NAME SHALL BE ON OPPOSITE SIDE OF THE STREET FROM TRAFFIC CONTROL SIGNS.

ALL SIGN LOCATIONS AND SIZES SHOWN ON PLANS MUST BE APPROVED SEPARATELY THROUGH THE PLANNING DIVISION.

ALL PAVING TO BE IN ACCORDANCE WITH ST. CHARLES COUNTY STANDARDS AND SPECIFICATIONS EXCEPT AS MODIFIED BY THE CITY OF FALLON ORDINANCES.



**SITE DATA**

LOT AREA	1.66 AC. (72310 SF)
PROPOSED BUILDING SQUARE FOOTAGE	5621 SF (7.77%)
PARKING REQUIRED	76 SPACES
PARKING PROVIDED	78 SPACES
HANDICAP REQUIRED	4 SPACES
HANDICAP PROVIDED	4 SPACES

PLANNING AND DEVELOPMENT FILE #2306  
APPROVED AUGUST 2, 2007

STREET ADDRESS		101 MCDONALD'S LANE	
CITY	STATE	COUNTY	CITY
OFALLON	MISSOURI	ST. CHARLES	OFALLON
REGIONAL DIV. NO.		24/0130	
SITE PLAN			

STATUS	DATE	BY
PRELIMINARY	-/-	-
PLAN CHECKED	-/-	-
AS-BUILT	-/-	-
PROJECT NO.	06-0620	

**C-2**