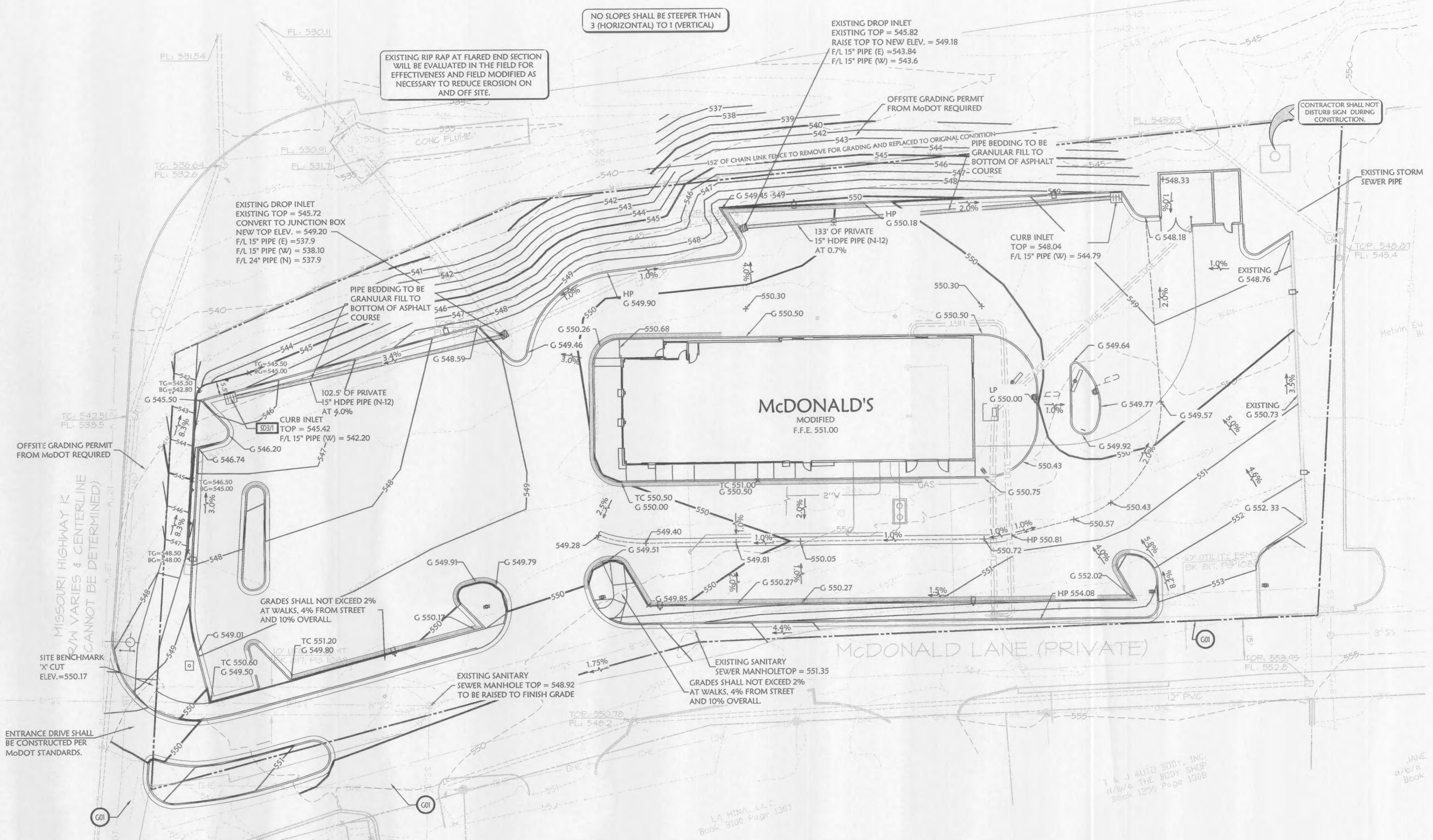


DATE	REV	DESCRIPTION
12/15/06	2	RESUBMITTAL WITH REVISIONS TO MCDONALDS DRIVE
01/16/07	3	CITY COMMENTS 01-16-07
02/13/07	4	REMOVED LEFT TURN LANE ON MCDONALDS DRIVE
03/30/07	5	REMOVED LEFT TURN LANE ON MCDONALDS DRIVE
05/19/07	6	RESUBMITTAL FOR PLANNING COMMISSION
06/15/07	7	RESUBMITTAL FOR PLANNING COMMISSION
08/16/07	8	CITY SUBMITTAL
10/1/07	9	CITY COMMENTS 9-18-07
10/9/07	10	MOODY COMMENTS
12/18/07	11	CITY COMMENTS 11-06-07



MODOT CALL NUMBER:
314-340-4100

INTERSTATE HIGHWAY TO
(R/W VARIES & CENTERLINE
CANNOT BE DETERMINED)



*ASPHALT PAVEMENT SECTION TO BE 3" ASPHALT COURSE COMPACTED TO 95% DENSITY AND 18" COMPACTED STONE BASE COMPACTED TO 98% MODIFIED PROCTOR (PER GEOTECH SPECIFICATIONS).

(REFER TO MCDONALDS PROJECT MANAGER FOR FURTHER DETAILS)

Clark
Civil Engineering Inc.
Scott A. McGowan, P.E.
Civil Engineer
State of Missouri License No. PE-0003011088
Regional Office: 11285 Sterling Line, Rd. Lenexa, KS 66215
(913) 310.0470 (V) / (913) 310.0261 (F)

McDonald's
THESE PLANS AND SPECIFICATIONS ARE THE PROPERTY OF MCDONALD'S CORPORATION AND SHALL NOT BE REPRODUCED WITHOUT THEIR WRITTEN PERMISSION.
KANSAS CITY
10801 MASTIN BLVD., STE. 400, OVERLAND PARK, KS 66210

PLANNING AND DEVELOPMENT FILE #2306
APPROVED AUGUST 2, 2007

STREET ADDRESS 101 MCDONALDS LANE		STATUS	DATE	BY
CITY OFALLON	STATE MISSOURI	PRELIMINARY	---	-
COUNTY ST. CHARLES		PLAN CHECKED	---	-
		AS-BUILT	---	-
REGIONAL DWG. NO. 24/0130		PROJECT NO.	06-0620	
GRADING PLAN		C-6.1		