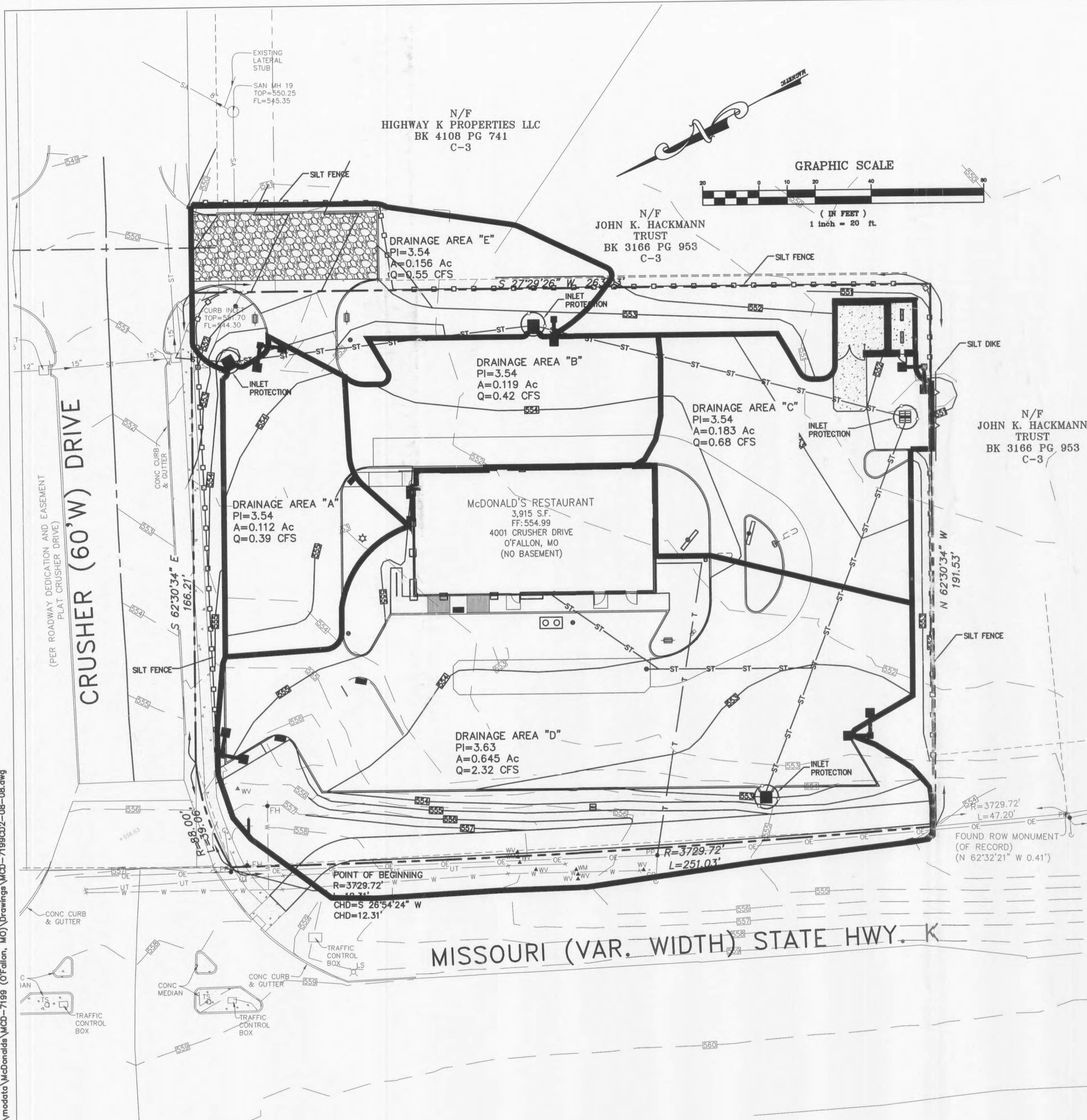


Feb 26, 2008 - 4:14pm \\mo-naa\modata\McDonalds\MCD-7199 (O'Fallon, MO)\Drawings\MCD-7199C02-08-08.dwg



- ABBREVIATIONS**
- BC BOTTOM OF CURB
  - BI BOTTOM OF ISLAND
  - EC EDGE OF CONCRETE
  - HP HIGH POINT
  - LP LOW POINT
  - ME MATCH EXISTING
  - TC TOP OF CURB
  - TI TOP OF ISLAND
  - TP TOP OF PAVEMENT
  - EP EDGE OF PAVEMENT
  - TR TOP OF RAMP
  - BR BOTTOM OF RAMP



GENERAL NOTES		BY
<ol style="list-style-type: none"> <li>McDONALD'S ROAD SIGN AND BASE ARE BY THE SIGN CONTRACTOR. CONDUIT AND WIRING ARE BY THE GENERAL CONTRACTOR.</li> <li>BASES, ANCHOR BOLTS, CONDUIT, AND WIRING FOR ALL OTHER SIGNS ARE BY THE GENERAL CONTRACTOR.</li> <li>3/4" EMPTY CONDUIT TO LOCATIONS SHOWN AT THE LOT PERIMETER FOR LOT LIGHTING IS BY THE GENERAL CONTRACTOR. LIGHTING FIXTURES, BASES, POLES, CONDUIT, AND WIRING ARE BY THE OWNER/OPERATOR.</li> <li>BASES FOR FLAGPOLES ARE BY THE GENERAL CONTRACTOR. ANCHOR BOLTS ARE BY THE FLAGPOLE SUPPLIER.</li> <li>PROPOSED UTILITIES ARE SHOWN IN SCHEMATIC ONLY. EXACT LOCATIONS SHALL BE DETERMINED TO ALLOW FOR THE MOST ECONOMICAL INSTALLATION.</li> <li>THE CONTRACTOR SHALL COORDINATE WITH ALL UTILITY COMPANIES TO DETERMINE EXACT POINT OF SERVICE CONNECTION AT EXISTING UTILITY. REFER TO THE BUILDING ELECTRICAL AND PLUMBING DRAWINGS FOR UTILITY SERVICE ENTRANCE LOCATIONS, SIZES, AND CIRCUITING.</li> <li>ALL ELEVATIONS SHOWN ARE IN REFERENCE TO THE BENCHMARK AND MUST BE VERIFIED BY THE GENERAL CONTRACTOR AT GROUND BREAK.</li> <li>FINISH WALK AND CURB ELEVATIONS SHALL BE 6" ABOVE FINISH PAVEMENT.</li> <li>ALL LANDSCAPE AREAS SHALL BE ROUGH GRADED TO 6" BELOW TOP OF ALL WALKS AND CURBS. FINISH GRADING, LANDSCAPING, AND SPRINKLER SYSTEMS ARE BY THE OWNER/OPERATOR.</li> <li>LOT LIGHTING CONCRETE FOOTINGS TO CONFORM WITH THE SOILS REPORT RECOMMENDATIONS FOR THIS PARTICULAR SITE.</li> <li>REFER TO SHEETS S01 THRU S05 FOR ALL APPLICABLE SITE DETAILS.</li> <li>PROVIDE WEEPHOLES ON CURBS AT ALL LANDSCAPE AREAS LOCATIONS. COORDINATE WITH McDONALD'S PROJECT MANAGER.</li> </ol>		JCS
GRADING/UTILITY PLAN NOTES		
<ol style="list-style-type: none"> <li>SILTATION CONTROL SHALL FOLLOW "ST. CHARLES COUNTY SOIL AND WATER CONSERVATION DISTRICT EROSION AND SEDIMENT CONTROL" GUIDELINES</li> </ol>		
PAVING SPECIFICATION (MINIMUM 3" TOTAL COMPACTED ASPHALT THICKNESS)		
PAVING TO BE TYPAR, 3401, 8", OF AN APPROVED CRUSHED STONE BASE, PLUS 3" OF AN APPROVED ASPHALTIC CONCRETE TOPPING TO BE LAID IN TWO (2) LIFTS AND ACCORDING TO MODOT SPECIFICATIONS. FINISHED THICKNESS OF PAVING TO BE 11". A MINIMUM 6" STRIP IS REQUIRED. ALL AREAS UNDER BUILDING AND PARKING TO BE COMPACTED TO A MINIMUM OF 95% OF MAXIMUM DRY DENSITY IN ACCORDANCE WITH ASTM D-0698.		
NOTE: McDONALD'S PROJECT MANAGER RESERVES THE RIGHT TO REQUEST A COMPACTION TEST AND/OR A CORE SAMPLE IF THE TESTS DO NOT CORRECTLY REFLECT ABOVE SPECIFICATIONS. TESTS WILL BE AT THE EXPENSE OF McDONALD'S, OTHERWISE G.C. WILL BE CHARGED.		
LOT LIGHTING RECOMMENDATION		
PREPARED BY:		
DATE:		
PARKING INFORMATION		
TOTAL SPACES	62 SPACES 9' X 19' @ 60'	
62		
UTILITY INFORMATION		
	SIZE TYPE LOCATION	
SANITARY SEWER	- 8 - -	
WATER	- - -	
STORM SEWER	- 8 - -	
ELECTRIC	- - -	
GAS	- - -	
SURVEY INFORMATION		
PREPARED BY: MASSMANN SURVEYING 7751 CARONDELET AVENUE SUITE 600 ST. LOUIS, MO 63105 314-862-5577		
DATE: 07/10/2007		
LEGEND		
S - SANITARY SEWER	G - GAS	
W - WATER	LOT LIGHT	
ST - STORM SEWER	LP-30	
E - ELECTRIC	EXISTING ELEVATION (76.5)	
	PROPOSED ELEVATION (77.0)	
PLAN SCALE: 1"=20'		
STREET ADDRESS		
HWY K AND CRUSHER DRIVE		
CITY	STATE	
O'FALLON	MISSOURI	
COUNTY		
ST. CHARLES		
REGIONAL DWG. NO	NATIONAL NUMBER	
024-1168	-	
DESCRIPTION		
DRAINAGE AREA/ EROSION CONTROL		
SHEET NO.	TITLE	
C2B		
REV	DATE	DESCRIPTION
1	1/23/08	REVIEW COMMENTS
2	2/18/08	REVIEW COMMENTS
3	2/26/08	PWS#2 REVIEW COMMENTS



**McDonald's Corporation**  
 These drawings and specifications are the confidential and proprietary property of McDonald's Corporation and shall not be copied or reproduced without written authorization. The contract documents were prepared for use on a different site or at a later time. Use of these drawings for reference or example on another project and reproduction of the contract documents for reuse on another project is not authorized.

**HWY K & CRUSHER DRIVE  
O'FALLON, MISSOURI**