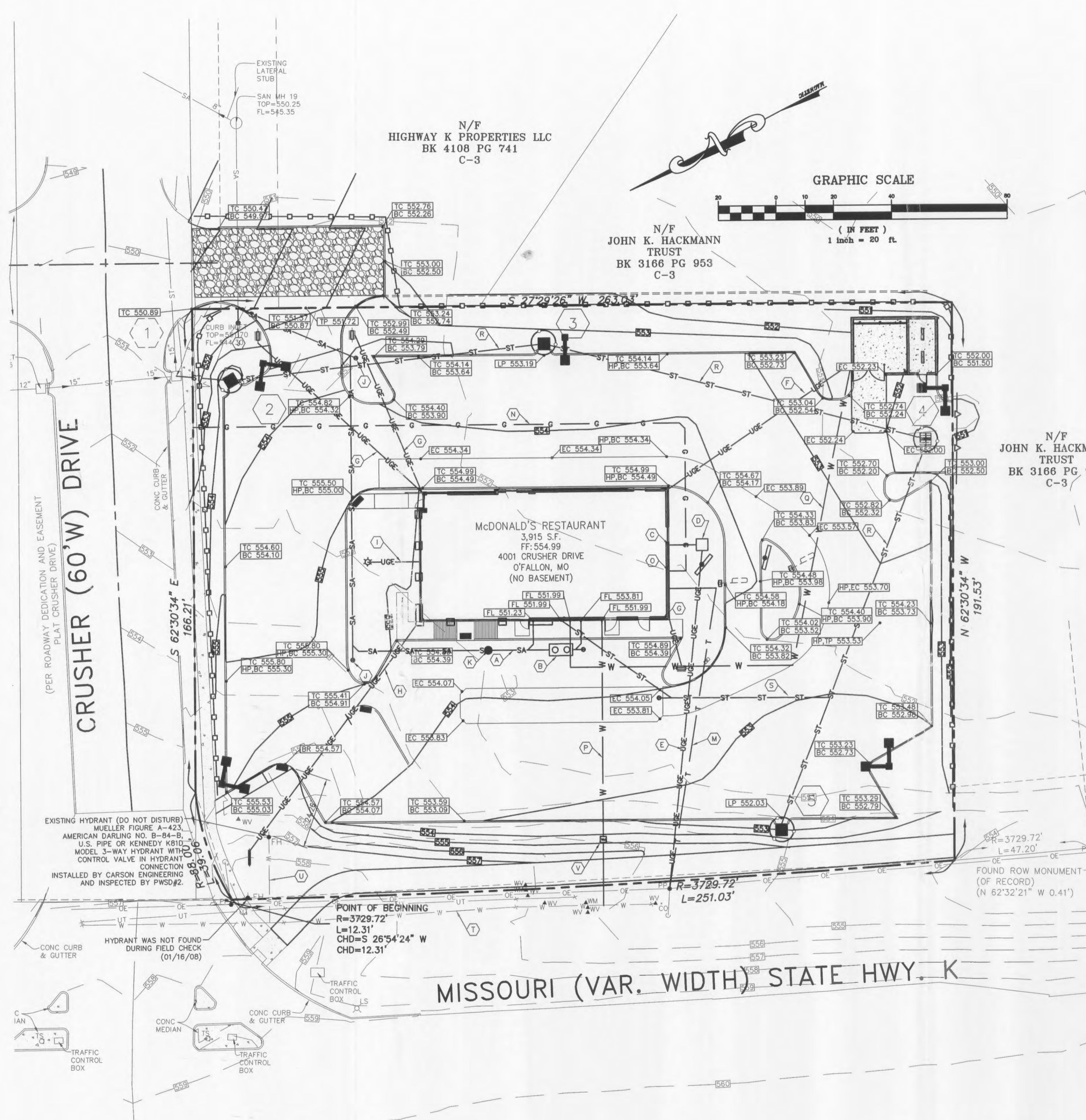


Feb 26, 2008 - 4:14pm \\mo-nas\mdata\McDonalds\MOCD-7199\MOCD-08-08.dwg (O'Fallon, MO)\Drawings\MOCD-7199\MOCD-08-08.dwg



UTILITY LEGEND

A. 6" SANITARY SEWER SERVICE @ 2% MIN.
 B. 1000 GALLON (MIN.) PRECAST CONCRETE GREASE TRAP WITH MANHOLE COVER.
 C. ELECTRICAL SERVICE W/ CTS AND METER BASE (2-4" PVC CONDUIT).
 D. TRANSFORMER PAD AND BASE BY AMEREN I.E. INSTALLED BY G.C. DOOR OF TRANSFORMER TO OPEN TO THE SOUTH.
 E. SECONDARY ELECTRIC SERVICE. ALL MATERIAL AND INSTALLATION BY G.C.
 F. 3/4" RIGID CONDUIT TO REFUSE AREA (EMPTY).
 G. 1/2" RIGID CONDUIT WITH WIRE TO WELCOME, DRIVE-THRU AND THANK YOU SIGNS (TYP.).
 H. 1-1/2" RIGID CONDUIT TO ROAD SIGN.
 I. 3/4" CONDUIT & WIRE FOR FLAG POLE LIGHT.
 J. CLEANOUT.
 K. NEW STD SAMPLING "T"
 L. NOT USED.
 M. 2" CONDUIT, SCHEDULE 40 P.V.C. WITH PULLING WIRE, USING 90° SWEEPS AT CORNERS, FOR TELEPHONE SERVICE.
 N. 2" GAS SERVICE. COORD. W/ LALEDE GAS TIE TO EXISTING GAS SERVICES.
 O. GAS METER
 P. 2" WATER SERVICE (K COPPER)
 Q. 3/4" WATER TO REFUSE AREA WITH FROSTPROOF HOSE BIBB.
 R. 12" PRIVATE RCP STORM SEWER.
 S. 6" PVC ROOF DRAIN.
 T. EXISTING 18" DUCTILE IRON PIPE.
 U. EXISTING WATER LINE (NOT FIELD LOCATED) VERIFIED BY PWS#2 TO HAVE BEEN INSTALLED WITH AN MIN. OF 8" DUCTILE IRON PIPE FROM THE 1" MAIN.
 V. NEW 2" WATER SERVICE METER, REFER TO SHEET C7 FOR DETAILS.

	EXISTING	PROPOSED
ASPHALT PAVEMENT		
BENCHMARK		
CONCRETE PAVEMENT		
CONTOUR - MAJOR	---	---
CONTOUR - MINOR	---	---
ELECTRIC - GUY WIRE	---	---
ELECTRIC - LIGHT	⊠	⊠
ELECTRIC - METER	⊠	⊠
ELECTRIC - OVERHEAD LINE	—OHE—	—OHE—
ELECTRIC - POWER POLE	⊠	⊠
ELECTRIC - TRANSFORMER	⊠	⊠
ELECTRIC - UNDERGROUND LINE	—UGE—	—UGE—
FENCE-SILT	---	---
FLOWLINE OF STREAM	---	---
GAS - GAS LINE	—G—	—G—
GAS - METER	⊠	⊠
GAS - VALVE	⊠	⊠
SANITARY SEWER - CLEANOUT	⊠	⊠
SANITARY SEWER - MANHOLE	⊠	⊠
SANITARY SEWER - SANITARY LINE	—SA—	—SA—
SANITARY SEWER - STRUCTURE LABEL	⊠	⊠
SIGN	---	---
SPOT ELEVATION	⊠	⊠
STORM SEWER - CLEANOUT	⊠	⊠
STORM SEWER - CURB INLET	⊠	⊠
STORM SEWER - DOUBLE CURB INLET	⊠	⊠
STORM SEWER - FLARED END SECTION	⊠	⊠
STORM SEWER - GRATE INLET	⊠	⊠
STORM SEWER - DOUBLE GRATE INLET	⊠	⊠
STORM SEWER - MANHOLE	⊠	⊠
STORM SEWER - MANHOLE (GRADED)	⊠	⊠
STORM SEWER - STORM LINE	—ST—	—ST—
STORM SEWER - STRUCTURE LABEL	⊠	⊠
TELEPHONE - BOX	⊠	⊠
TELEPHONE - TELEPHONE LINE	—FO&T—	—T—
TREE - GENERAL	⊠	⊠
WATER - FIRE HYDRANT	⊠	⊠
WATER - METER	⊠	⊠
WATER - WATER LINE	—W—	—W—
WATER - VALVE	⊠	⊠

DUCKETT CREEK SANITARY DISTRICT CONSTRUCTION NOTES

- UNDERGROUND UTILITIES HAVE BEEN PLOTTED FROM AVAILABLE INFORMATION AND THEREFORE LOCATION SHALL BE CONSIDERED APPROXIMATE ONLY. THE VERIFICATION OF THE LOCATION OF ALL UNDERGROUND UTILITIES, EITHER SHOWN OR NOT SHOWN ON THESE PLANS, SHALL BE THE RESPONSIBILITY OF THE CONTRACTOR AND SHALL BE LOCATED PRIOR TO ANY GRADING OR CONSTRUCTION OF IMPROVEMENTS.
- GAS, WATER AND OTHER UNDERGROUND UTILITIES SHALL NOT CONFLICT WITH THE DEPTH OR HORIZONTAL LOCATION OF EXISTING OR PROPOSED SANITARY AND STORM SEWERS, INCLUDING HOUSE LATERALS.
- ALL EXISTING SITE IMPROVEMENTS, DISTURBED, DAMAGED OR DESTROYED SHALL BE REPAIRED OR REPLACED TO CLOSELY MATCH PRECONSTRUCTION CONDITIONS.
- ALL FILL INCLUDING PLACES UNDER PROPOSED STORM AND SANITARY SEWER LINES AND PAVED AREAS INCLUDING TRENCH BACKFILLS WITHIN AND TO THE ROAD RIGHT-OF-WAY SHALL BE COMPACTED TO 90 PERCENT OF MAXIMUM DENSITY AS DETERMINED BY THE MODIFIED AASHTO T-100 COMPACTION TEST (ASTM D1557). ALL TESTS SHALL BE VERIFIED BY A SOILS ENGINEER CONCURRENT WITH GRADING AND BACKFILLING OPERATIONS. THE COMPACTED FILL SHALL BE FREE OF RUTTING AND SHALL BE NON-YIELDING AND NON-FLOWING DURING FREEZING AND THAWING.
- THE CONTRACTOR SHALL PREVENT ALL STORM, SURFACE WATER, MUD AND CONSTRUCTION DEBRIS FROM ENTERING THE EXISTING SANITARY SEWER SYSTEM.
- ALL SANITARY SEWER FLOWLINES AND TOPS BUILT WITHOUT ELEVATIONS FURNISHED BY THE ENGINEER WILL BE THE RESPONSIBILITY OF THE SEWER CONTRACTOR.
- IT IS THE RESPONSIBILITY OF THE CONTRACTOR TO ADJUST ALL SANITARY SEWER MANHOLES (THAT ARE AFFECTED BY THE DEVELOPMENT) TO FINISH GRADE.
- EASEMENTS SHALL BE PROVIDED FOR ALL SANITARY SEWERS, STORM SEWERS AND ALL UTILITIES ON THE RECORD PLAT.
- ALL SANITARY SEWER CONSTRUCTION AND MATERIALS SHALL CONFORM TO THE CURRENT CONSTRUCTION STANDARDS OF THE DUCKETT CREEK SANITARY DISTRICT.
- THE DUCKETT CREEK SANITARY DISTRICT SHALL BE NOTIFIED AT LEAST 48 HOURS PRIOR TO CONSTRUCTION FOR COORDINATION OF INSPECTION.
- ALL SANITARY SEWER BUILDING CONNECTIONS SHALL BE DESIGNED SO THAT THE MINIMUM VERTICAL DISTANCE FROM THE LOW POINT OF THE BASEMENT TO THE FLOWLINE OF A SANITARY SEWER AT THE CORRESPONDING BUILDING CONNECTION SHALL NOT BE LESS THAN THE DIAMETER OF THE PIPE PLUS THE VERTICAL DISTANCE OF 2-1/2 FEET.
- ALL SANITARY SEWER MANHOLES SHALL BE WATERPROOFED ON THE EXTERIOR IN ACCORDANCE WITH MISSOURI DEPT. OF NATURAL RESOURCES SPECIFICATION 19 CSR-8.100(1)(B).
- ALL PVC SANITARY SEWER PIPE SHALL CONFORM TO THE REQUIREMENTS OF ASTM D-3034. STANDARD SPECIFICATION FOR PSM POLYVINYL CHLORIDE SEWER PIPE, 8-36 OR EQUAL, WITH "CLEAN" 1/2 INCH TO 1 INCH GRANULAR STONE BEDDING UNIFORMLY GRADED. THIS BEDDING SHALL EXTEND 4 FEET BELOW THE PIPE TO SPRINGLINE OF PIPE. IMMEDIATE BACKFILL OVER PIPE SHALL CONSIST OF SAME SIZE "CLEAN" OR "MINUS" STONE FROM SPRINGLINE OF PIPE TO 6 INCHES ABOVE THE TOP OF PIPE.
- ALL SANITARY AND STORM SEWER TRENCH BACKFILLS SHALL BE WATER JETTED. GRANULAR BACKFILL WILL BE USED UNDER PAVEMENT AREAS.
- ALL PIPES SHALL HAVE POSITIVE DRAINAGE THROUGH MANHOLES. FLAT INVERT STRUCTURES NOT ALLOWED.
- EPOXY COATING SHALL BE USED ON ALL SANITARY SEWER MANHOLES THAT RECEIVE PRESSURIZED MANNS.
- ALL CREEK CROSSINGS SHALL BE LINED WITH RIP-RAP AS DIRECTED BY DISTRICT INSPECTORS.
- BRICK SHALL NOT BE USED ON SANITARY SEWER MANHOLES.
- EXISTING SANITARY SEWER SERVICE SHALL NOT BE INTERRUPTED.
- MAINTAIN ACCESS TO EXISTING RESIDENTIAL DRIVEWAYS AND STREETS.
- PRE-MANUFACTURED ADAPTERS SHALL BE USED AT ALL PVC TO DIP CONNECTIONS. RUBBER BOOT/ MISSION-TYPE COUPLINGS WILL NOT BE ALLOWED.
- ANY PERMITS, LICENSES, EASEMENTS, OR APPROVALS REQUIRED TO WORK ON PUBLIC OR PRIVATE PROPERTIES OR ROADWAYS ARE THE RESPONSIBILITY OF THE DEVELOPER.
- TYPE N LOCK-TYPE COVER AND LOCKING DEVICE (LOCK-LOG) SHALL BE USED WHERE LOCK-TYPE COVERS ARE REQUIRED.

ABBREVIATIONS

BC BOTTOM OF CURB
 BI BOTTOM OF ISLAND
 EC EDGE OF CONCRETE
 HP HIGH POINT
 LP LOW POINT
 ME MATCH EXISTING
 TC TOP OF CURB
 TI TOP OF ISLAND
 TP TOP OF PAVEMENT
 EP EDGE OF PAVEMENT
 TR TOP OF RAMP
 BR BOTTOM OF RAMP

CALL BEFORE YOU DIG
 1-800-4-A-DIG
 MISSOURI ONE CALL SYSTEM

GENERAL NOTES

- McDONALD'S ROAD SIGN AND BASE ARE BY THE SIGN CONTRACTOR. CONDUIT AND WIRING ARE BY THE GENERAL CONTRACTOR.
- BASES, ANCHOR BOLTS, CONDUIT, AND WIRING FOR ALL OTHER SIGNS ARE BY THE GENERAL CONTRACTOR.
- 3/4" EMPTY CONDUIT TO LOCATIONS SHOWN AT THE LOT PERIMETER FOR LOT LIGHTING IS BY THE GENERAL CONTRACTOR. LIGHTING FIXTURES, BASES, POLES, CONDUIT, AND WIRING ARE BY THE OWNER/OPERATOR.
- BASES FOR FLAGPOLES ARE BY THE GENERAL CONTRACTOR. ANCHOR BOLTS ARE BY THE FLAGPOLE SUPPLIER.
- PROPOSED UTILITIES ARE SHOWN IN SCHEMATIC ONLY. EXACT LOCATIONS SHALL BE DETERMINED TO ALLOW FOR THE MOST ECONOMICAL INSTALLATION.
- THE CONTRACTOR SHALL COORDINATE WITH ALL UTILITY COMPANIES TO DETERMINE EXACT TEST OF SERVICE CONNECTION AT EXISTING UTILITY. REFER TO THE BUILDING ELECTRICAL AND PLUMBING DRAWINGS FOR UTILITY SERVICE ENTRANCE, LOCATIONS, SIZES, AND CIRCUITING.
- ALL ELEVATIONS SHOWN ARE IN REFERENCE TO THE BENCHMARK AND MUST BE VERIFIED BY THE GENERAL CONTRACTOR AT GROUND BREAK.
- FINISH WALK AND CURB ELEVATIONS SHALL BE 6" ABOVE FINISH PAVEMENT.
- ALL LANDSCAPE AREAS SHALL BE ROUGH GRADED TO 6" BELOW TOP OF ALL WALKS AND CURBS. FINISH GRADING, LANDSCAPING, AND SPRINKLER SYSTEMS ARE BY THE OWNER/OPERATOR.
- LOT LIGHTING CONCRETE FOOTINGS TO CONFORM WITH THE SOILS REPORT RECOMMENDATIONS FOR THIS PARTICULAR SITE.
- REFER TO SHEETS S01 THRU S05 FOR ALL APPLICABLE SITE DETAILS.
- PROVIDE WEEPHOLES ON CURBS AT ALL LANDSCAPE AREAS LOCATIONS. COORDINATE WITH McDONALD'S PROJECT MANAGER.

GRADING/UTILITY PLAN NOTES

SANITARY NOTES

- EXISTING SANITARY SEWER SERVICE SHALL NOT BE INTERRUPTED.
- CONNECTION TO DUCKETT CREEK SANITARY DISTRICT (DCSD) SANITARY SEWERS REQUIRES DCSD INSPECTION. CONTACT MR. STEVE OVERBEY, DCSD CHIEF INSPECTOR, AT 636-441-1244 TO SCHEDULE AN INSPECTION. 24-HOUR ADVANCE NOTICE REQUIRED.

PAVING SPECIFICATION

(MINIMUM 3" TOTAL COMPACTED ASPHALT THICKNESS)

PAVING TO BE TYPAR, 3401, B", OF AN APPROVED CRUSHED STONE BASE, PLUS 3" OF AN APPROVED ASPHALTIC CONCRETE TOPPING TO BE LAID IN TWO (2) LIFTS AND ACCORDING TO MDDOT SPECIFICATIONS. FINISHED THICKNESS OF PAVING TO BE 11". A MINIMUM 6" STRIP IS REQUIRED. ALL AREAS UNDER BUILDING AND PARKING TO BE COMPACTED TO A MINIMUM OF 95% OF MAXIMUM DRY DENSITY IN ACCORDANCE WITH ASTM D-0998.

NOTE: McDONALD'S PROJECT MANAGER RESERVES THE RIGHT TO REQUEST A COMPACTION TEST AND/OR A CORE SAMPLE IF TESTS PROVE CORRECT, PER ABOVE SPECIFICATIONS, TESTS WILL BE AT THE EXPENSE OF McDONALD'S, OTHERWISE G.C. WILL BE CHARGED.

LOT LIGHTING RECOMMENDATION

PREPARED BY: MASSHAM SURVEYING
 DATE: 07/10/2007

PARKING INFORMATION

TOTAL SPACES	62
SPACES	62

UTILITY INFORMATION

SANITARY SEWER	SIZE	TYPE	LOCATION
SANITARY SEWER	8"	---	---
WATER	---	---	---
STORM SEWER	8"	---	---
ELECTRIC	---	---	---
GAS	---	---	---

SURVEY INFORMATION

PREPARED BY: MASSHAM SURVEYING
 7751 CARONDELLE AVENUE SUITE 600
 ST. LOUIS, MO 63105
 314-862-5577

LEGEND

—S—	SANITARY SEWER	—G—	GAS
—W—	WATER	⊠	LOT LIGHT
—ST—	STORM SEWER	⊠	EXISTING ELEVATION (76.5)
—E—	ELECTRIC	⊠	PROPOSED ELEVATION (77.0)

PLAN SCALE: 1"=20'
 STREET ADDRESS: HWY K AND CRUSHER DRIVE
 CITY: O'FALLON STATE: MISSOURI
 COUNTY: ST. CHARLES
 REGIONAL DWG. NO: 024-1168 NATIONAL NUMBER: -
 SHEET NO: C2



McDonald's Corporation
 These drawings and specifications are the confidential and proprietary property of McDonald's Corporation and shall not be copied or reproduced in any form without the written consent of McDonald's Corporation. This drawing is prepared for use on this specific site in conjunction with its issue date and is not suitable for use on a different site or at a later time. The services of properly licensed architects and engineers. Reproduction of the contract documents for reuse on another project is not authorized.

REV	DATE	DESCRIPTION
1	1/23/08	REVIEW COMMENTS
2	2/18/08	REVIEW COMMENTS
3	2/26/08	PWS#2 REVIEW COMMENTS